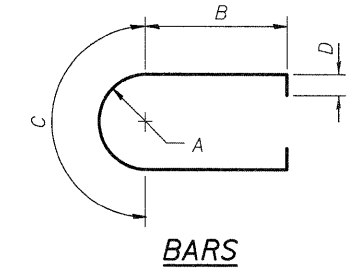


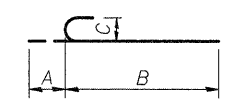
**PIER 2
BILL OF MATERIAL**

Bar	No.	Size	Length	Shape
h20(E)	2	#8	58'-8"	—
h21(E)	28	#8	50'-2"	—
h22(E)	4	#8	48'-2"	—
h23(E)	4	#8	45'-11"	—
h24(E)	4	#8	43'-8"	—
h25(E)	4	#8	41'-10"	—
h26(E)	528	#8	36'-10"	—
h27(E)	106	#8	60'-0"	—
h28(E)	106	#8	59'-0"	—
n20(E)	220	#11	56'-7"	—
n21(E)	440	#11	51'-4"	—
n22(E)	36	#11	55'-0"	—
n23(E)	36	#11	57'-6"	—
n24(E)	24	#11	55'-0"	—
n25(E)	220	#11	59'-1"	—
p20(E)	16	#6	58'-8"	—
p21(E)	64	#11	23'-10"	—
p22(E)	32	#6	18'-10"	—
p23(E)	18	#8	16'-3"	—
s20(E)	104	#6	41'-0"	□
s21(E)	176	#6	18'-10"	□
s22(E)	88	#6	19'-5"	□
s23(E)	4,128	#4	8'-5"	□
s24(E)	230	#5	21'-0"	□
s25(E)	52	#6	13'-2"	□
sp20	10	#6	2322'-0"	—
sp21	10	#6	1802'-0"	—
t20(E)	144	#11	33'-8"	—
t21(E)	18	#8	32'-4"	—
t22(E)	128	#11	33'-8"	—
u20(E)	18	#6	20'-1"	—
u21(E)	132	#8	24'-0"	—
u22(E)	132	#8	24'-0"	—
u23(E)	106	#8	21'-0"	—
u24(E)	106	#8	20'-6"	—
v20(E)	220	#11	46'-7"	—
v21(E)	36	#11	35'-0"	—
v22(E)	36	#11	32'-6"	—
v23	160	#11	32'-7"	—
v24	160	#11	57'-7"	—
v25	80	#11	57'-7"	—
v26	80	#11	55'-1"	—
v27	80	#11	36'-0"	—
v28	80	#11	38'-6"	—
v29(E)	220	#11	44'-1"	—
w20(E)	36	#8	44'-3"	—
w21(E)	36	#8	46'-2"	—
w22(E)	44	#8	46'-2"	—
w23(E)	44	#8	10'-11"	—
w24(E)	18	#8	13'-7"	—
Cofferdam Excavation	Cu. Yd.	8,111		
Cofferdam (Location-1)	Each	1		
Concrete Structures	Cu. Yd.	3,173.0		
Seal Coat Concrete	Cu. Yd.	3,050.6		
Reinforcement Bars	Pound	2,18,150		
Reinforcement Bars, Epoxy Coated	Pound	644,100		
Permanent Casing	Foaf	740.0		
Drilled Shaft in Soil	Cu. Yd.	775.0		
Drilled Shaft in Rock	Cu. Yd.	105.6		
Crosshole Sonic Logging	Each	10		
Mechanical Splicers	Each	1,096		



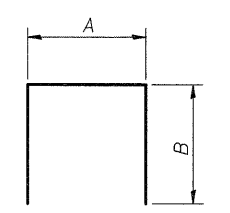
**BARS
A, B, C & D DIMENSIONS**

Bar	A	B	C	D
u21(E)	3'-10"	4'-8"	12'-0"	1'-4"
u22(E)	3'-4"	5'-5"	10'-6"	1'-4"
u23(E)	3'-10"	4'-6"	12'-0"	-
u24(E)	3'-4"	5'-0"	10'-6"	-



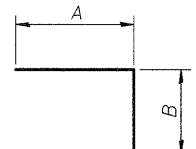
**BARS
A, B & C DIMENSIONS**

Bar	A	B	C
n20(E)	1'-7"	55'-0"	1'-2 3/4"
n21(E)	1'-7"	49'-9"	1'-2 3/4"
n25(E)	1'-7"	57'-6"	1'-2 3/4"
v23	1'-7"	31'-0"	1'-2 3/4"
v24	1'-7"	56'-0"	1'-2 3/4"
v25	1'-7"	56'-0"	1'-2 3/4"
v26	1'-7"	53'-6"	1'-2 3/4"



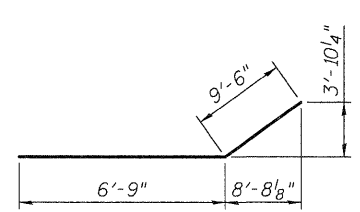
**BARS
A & B DIMENSIONS**

Bar	A	B
s21(E)	3'-6"	7'-8"
s22(E)	4'-1"	7'-8"
s25(E)	8'-2"	2'-6"
t20(E)	29'-8"	2'-0"
t21(E)	29'-8"	1'-4"
t22(E)	29'-8"	2'-0"
u20(E)	8'-1"	6'-0"

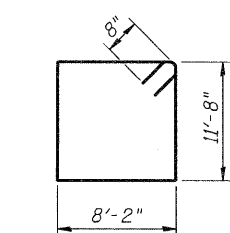


**BARS
A & B DIMENSIONS**

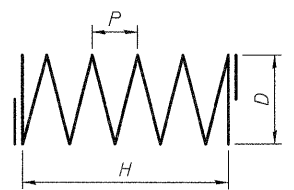
Bar	A	B
p21(E)	21'-10"	2'-0"
w23(E)	1'-4"	9'-7"
w24(E)	4'-0"	9'-7"



BAR p23(E)



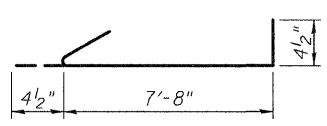
BAR s20(E)



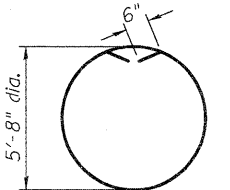
**SPIRALS
H, D & P DIMENSIONS**

Bar	H	D	P	L*
sp20	35'-0"	5'-2"	3"	2,322'
sp21	54'-0"	5'-2"	6"	1,802'

* Length calculated as continuous bar (ignoring splices).

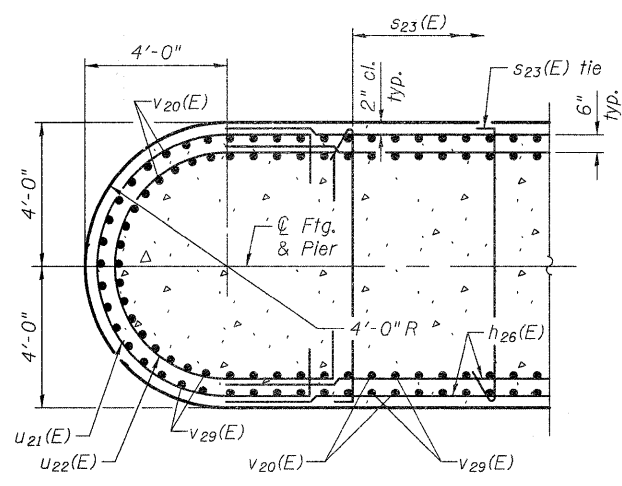


BAR s23(E)

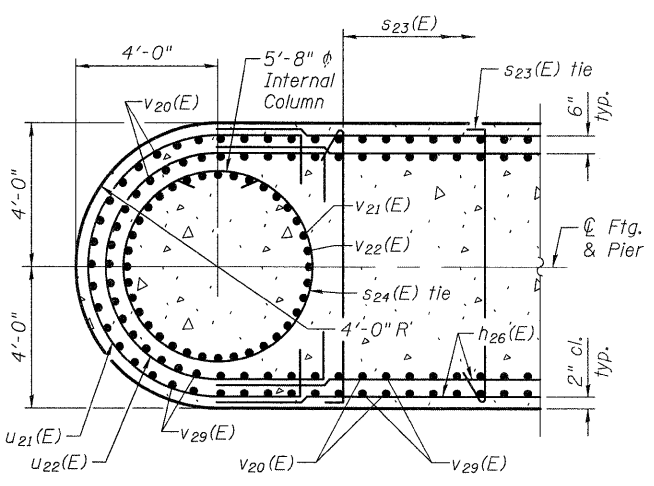


BAR s24(E)

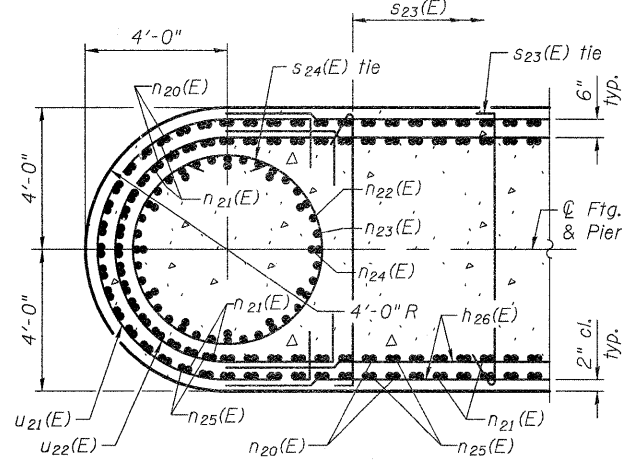
Note:
Bars indicated thus 3 x 4-#8 etc. indicates 3 lines of bars with 4 lengths per line or 3 layers of bars with 4 bars per layer.



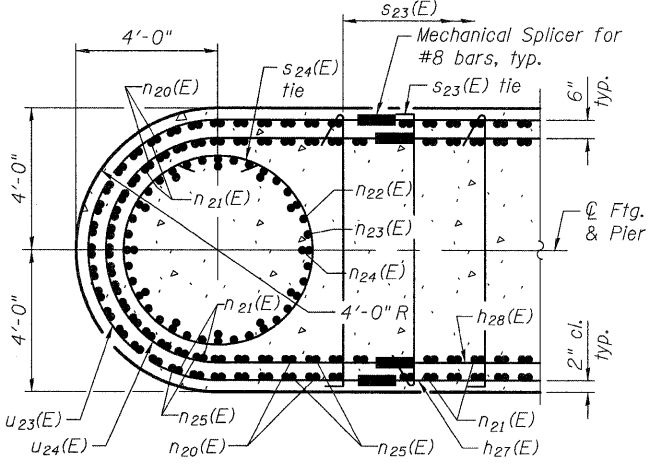
SECTION C-C



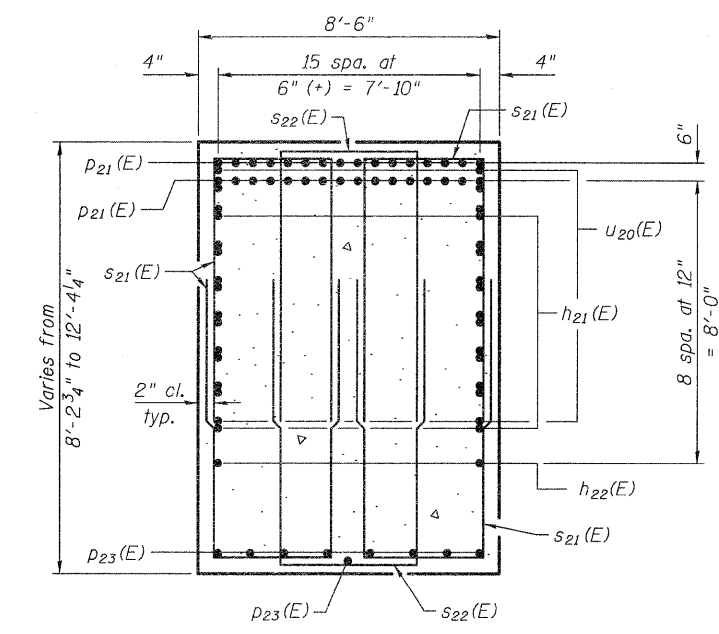
SECTION D-D



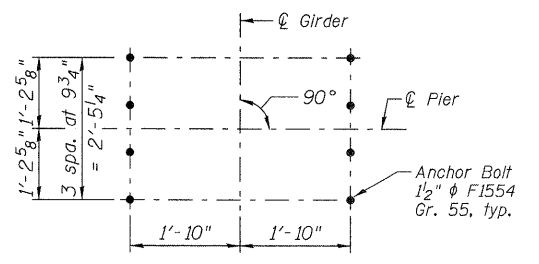
SECTION E-E



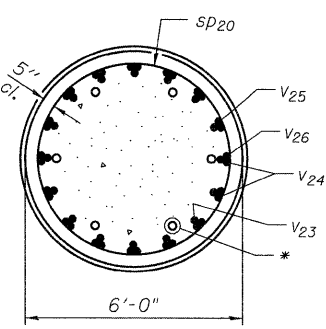
SECTION F-F



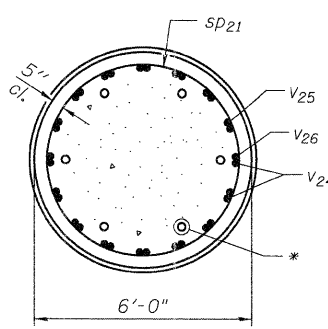
SECTION B-B



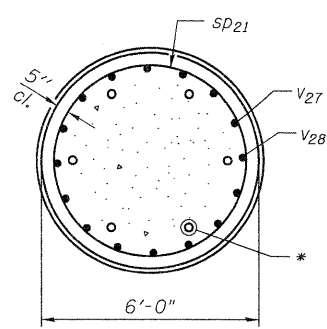
TYPICAL ANCHOR BOLT LAYOUT



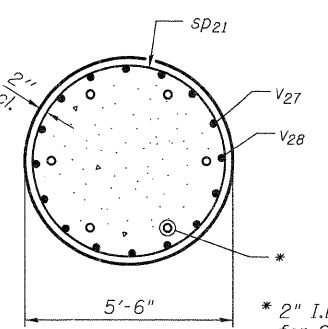
SECTION G-G



SECTION H-H



SECTION I-I



SECTION J-J

* 2" I.D. Steel Pipe for Crosshole Sonic Logging, typ. (6 each shaft)

4/20/2011 4:49:01 PM c:\pwworking\hdm\c0549104\0600345-76A91-094-PRD.dgn jmlgus



USER NAME = jmlgus	DESIGNED - MG	REVISED - LGP 4/20/2011
FILE NAME = 0600345-76A91-094-PRD.DGN	CHECKED - PJC	REVISED -
PLOT SCALE = NONE	DRAWN - JM	REVISED -
PLOT DATE = 3/18/2011	CHECKED - BSK	REVISED -

**STATE OF ILLINOIS
DEPARTMENT OF TRANSPORTATION**

**PIER 2 - SECTIONS & BILL OF MATERIAL
STRUCTURE NO. 060-0345**

BRIDGE SHEET NO. 94 OF 133 SHEETS

F.A.I. RTE. 270	SECTION 60-1B-1	COUNTY MADISON	TOTAL SHEETS 712	SHEET NO. 473
CONTRACT NO. 76A91				ILLINOIS FED. AID PROJECT