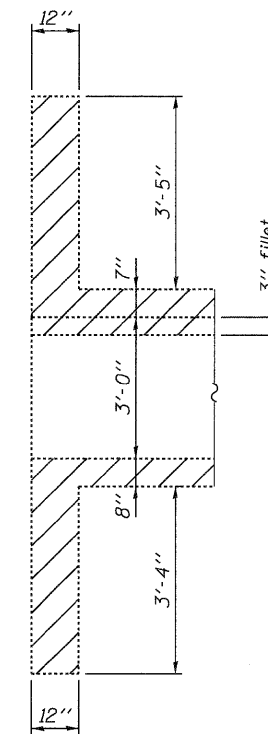
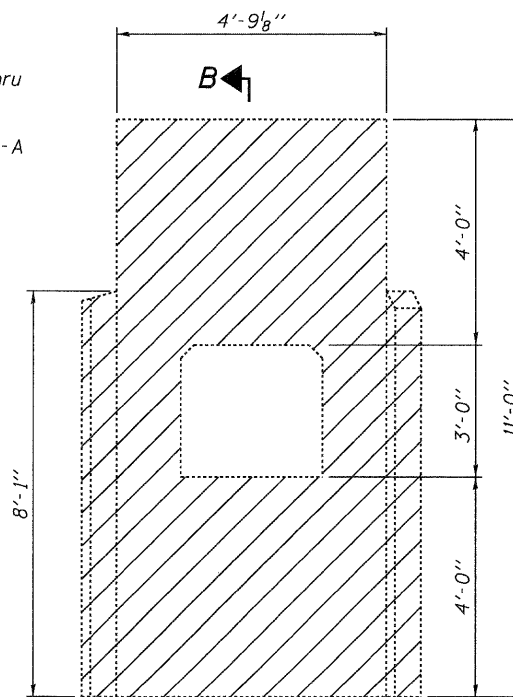


**Notes:**  
 Hatched areas indicate Concrete Removal.  
 Removal of existing Sluice Gate is included in Concrete Removal.  
 See Sheet 1 of 3 for Section Thru Barrel. Expansion Bolts are not required at the South end.  
 See Sheet 2 of 3 for Section A-A and bar details.  
 Cut exist. longitudinal wall and slab reinforcement 3'-0" beyond Exist. Culvert Removal.



**SOUTH END BILL OF MATERIAL**

Bar	No.	Size	Length	Shape
a	22	#4	3'-3"	—
b	22	#4	6'-9"	┌
b <sub>1</sub>	22	#4	9'-9"	┌
d	3	#4	4'-6"	└
h <sub>2</sub>	8	#6	4'-3"	—
h <sub>3</sub>	7	#5	8'-0"	└
h <sub>4</sub>	6	#5	6'-11"	└
h <sub>5</sub>	7	#5	8'-0"	└
h <sub>6</sub>	6	#5	11'-0"	└
h <sub>7</sub>	24	#5	8'-6"	—
s	10	#4	3'-7"	□
v	8	#4	6'-1"	—
Concrete Box Culverts				Cu. Yd. 4.9
Reinforcement Bars				Pound 850
Concrete Removal				Cu. Yd. 44.8

**CB Coombe-Bloxdorf P.C.**  
 - CIVIL ENGINEERS-  
 - STRUCTURAL ENGINEERS-  
 - LAND SURVEYORS-  
 Design Firm License No. 184-002703

FILE NAME = ...0876491-536-culv.1180.75.dgn

USER NAME = .MML.

DESIGNED -  
 CHECKED -

REVISED -  
 REVISED -  
 DRAWN -

**STATE OF ILLINOIS  
 DEPARTMENT OF TRANSPORTATION**

**CULVERT EXTENSION DETAILS  
 STATION 1180 + 75**

SHEET NO. 3 OF 3 SHEETS

F.A.I. SECTION COUNTY TOTAL SHEETS SHEET NO.  
 270 60-1B-1 MADISON 712 536

CONTRACT NO. 76A91

ILLINOIS FED. AID PROJECT

CB PROJECT NO. 08829

PLOT SCALE = 0:1.000000 ' = 1" IN.  
 PLOT DATE = 3/14/2011

DESIGNED -  
 CHECKED -

REVISED -  
 REVISED -  
 DRAWN -