

The Subsurface Utility Engineering Company
449 Munroe Falls Road
Tallmadge, OH 44278
(330) 794-4455

So-Deep Test Hole Certification Form

© So-Deep 1988, 1991

So-Deep, Corporate Office
8397 Euclid Avenue
Manassas Park, VA 20111
(703)361-6005

Control # **SIMB922**
Test Hole # **1**
Plan Scale **1"=50'**
Sheet # **8**
Proposed **BRIDGE REPLACEMENT**
Date **JULY 16, 2009**

Condition of paving prior to work
NO PAVING

City, County, State **MADISON CO., IL**
Gen. Loc. **I-270 E.B. @ CHAIN OF ROCKS CANAL**
Recorded Size/Material/Type **14" (O.D.) COATED STEEL (EXPLORER) GAS LINE**
Foreman/Truck#/Form By **J. CLINE / 219 / P. REYNOLDS**

B.M. 1 Elev. = **429.36'**
is **GIVEN**

Description: **(BM 270-11) CHIS "I" FOUND, CENTER OF CONC. PIER BASE FOR E.B. I-270, JUST E OF EAST BANK, CHAIN OF**

B.M. 2 Elev. = **429.36'**
is **CALCULATED**

Description: **CHIS "X" SET NE CORNER OF CONC. PIER BASE FOR W.B. I-270, JUST E OF EAST BANK, CHAIN OF ROCKS CANAL**

Benchmarks check **BY 0.00'**
Elevations are referenced to **B.M.#1**

SO-DEEP will attempt to use the BM/HI most applicable to your design. If however, BMs differ by more than .05', resulting differences could cause design conflicts.

Recorded Size/Type of utility **WAS FOUND**

There **WERE NOT** additional utilities in the test hole

The utility **WAS** in good condition.

Paving Thickness and type **NO PAVING**

Color of ribbon installed **YELLOW**

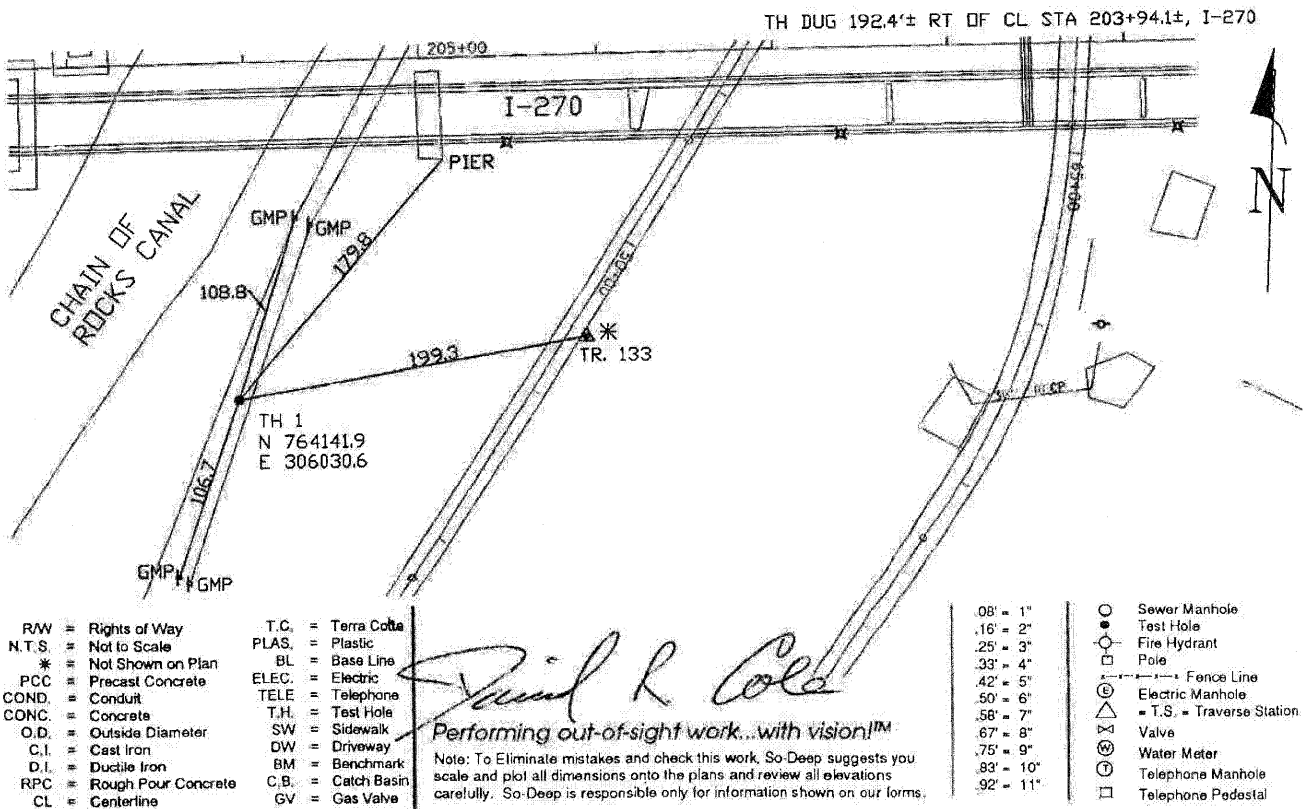
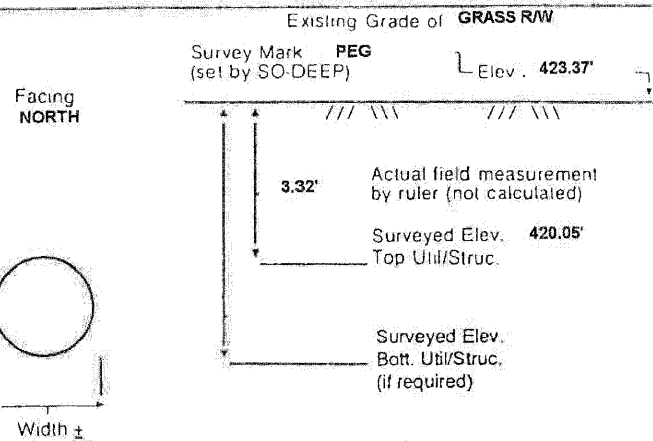
Soil Type **MOIST SAND**

Field Condition **GRASS R/W**

T.H. tied to **PEG**

14" COATED STEEL (EXPLORER) GAS LINE
Size/Material/Type
Portion of pipe exposed for O.D. measurement:
FULL

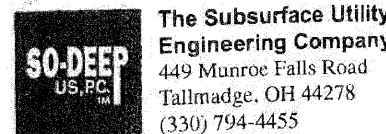
Remarks: **NONE**



- R/W = Rights of Way
- N.T.S. = Not to Scale
- * = Not Shown on Plan
- PCC = Precast Concrete
- COND. = Conduit
- CONC. = Concrete
- O.D. = Outside Diameter
- C.I. = Cast Iron
- D.I. = Ductile Iron
- RPC = Rough Pour Concrete
- CL = Centerline
- T.C. = Terra Cotta
- PLAS. = Plastic
- BL = Base Line
- ELEC. = Electric
- TELE = Telephone
- T.H. = Test Hole
- SW = Sidewalk
- DW = Driveway
- BM = Benchmark
- C.B. = Catch Basin
- GV = Gas Valve

Paul R. Cole
Performing out-of-sight work...with vision!
Note: To Eliminate mistakes and check this work, So-Deep suggests you scale and plot all dimensions onto the plans and review all elevations carefully. So-Deep is responsible only for information shown on our forms.

- 08" = 1"
- .16" = 2"
- .25" = 3"
- .33" = 4"
- .42" = 5"
- .50" = 6"
- .58" = 7"
- .67" = 8"
- .75" = 9"
- .83" = 10"
- .92" = 11"
- = Sewer Manhole
- = Test Hole
- ⊕ = Fire Hydrant
- = Pole
- = Fence Line
- ⊗ = Electric Manhole
- ⊕ = T.S. = Traverse Station
- ⊕ = Valve
- ⊕ = Water Meter
- ⊕ = Telephone Manhole
- ⊕ = Telephone Pedestal



The Subsurface Utility Engineering Company
449 Munroe Falls Road
Tallmadge, OH 44278
(330) 794-4455

So-Deep Test Hole Certification Form

© So-Deep 1988, 1991

So-Deep, Corporate Office
8397 Euclid Avenue
Manassas Park, VA 20111
(703)361-6005

Control # **SIMB922**
Test Hole # **2**
Plan Scale **1"=50'**
Sheet # **8**
Proposed **BRIDGE REPLACEMENT**
Date **JULY 16, 2009**

Condition of paving prior to work
NO PAVING

City, County, State **MADISON CO., IL**
Gen. Loc. **I-270 E.B. @ CHAIN OF ROCKS CANAL**
Recorded Size/Material/Type **6" COATED STEEL (BUCKEYE) GAS LINE**
Foreman/Truck#/Form By **J. CLINE / 219 / P. REYNOLDS**

B.M. 1 Elev. = **429.36'**
is **GIVEN**

Description: **(BM 270-11) CHIS "I" FOUND, CENTER OF CONC. PIER BASE FOR E.B. I-270, JUST E OF EAST BANK, CHAIN OF**

B.M. 2 Elev. = **429.36'**
is **CALCULATED**

Description: **CHIS "X" SET NE CORNER OF CONC. PIER BASE FOR W.B. I-270, JUST E OF EAST BANK, CHAIN OF ROCKS CANAL**

Benchmarks check **BY 0.00'**
Elevations are referenced to **B.M.#1**

SO-DEEP will attempt to use the BM/HI most applicable to your design. If however, BMs differ by more than .05', resulting differences could cause design conflicts.

Recorded Size/Type of utility **WAS FOUND**

There **WERE NOT** additional utilities in the test hole

The utility **WAS** in good condition.

Paving Thickness and type **NO PAVING**

Color of ribbon installed **YELLOW**

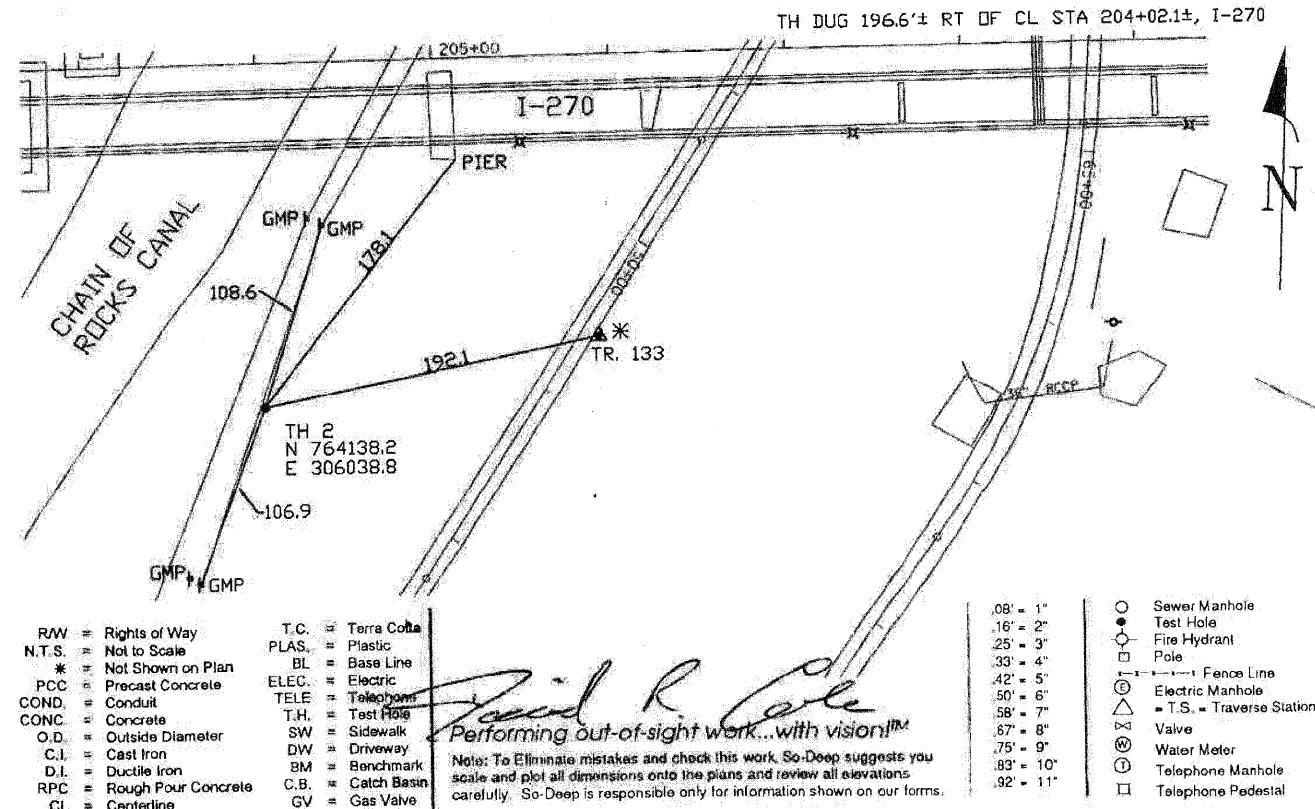
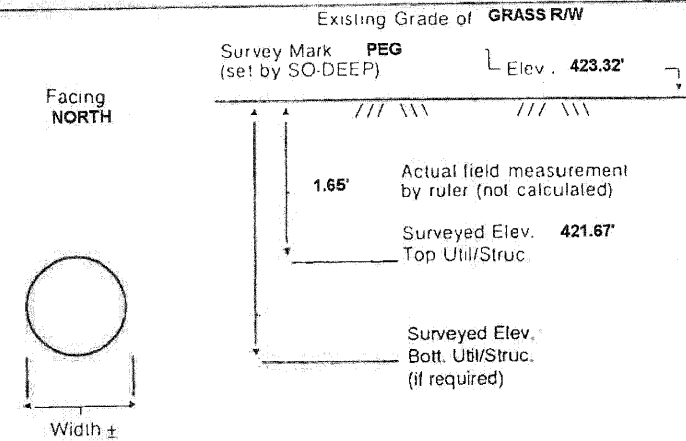
Soil Type **MOIST SAND**

Field Condition **GRASS R/W**

T.H. tied to **PEG**

7" COATED STEEL (BUCKEYE) GAS LINE
Size/Material/Type
Portion of pipe exposed for O.D. measurement:
FULL

Remarks: **NONE**



- R/W = Rights of Way
- N.T.S. = Not to Scale
- * = Not Shown on Plan
- PCC = Precast Concrete
- COND. = Conduit
- CONC. = Concrete
- O.D. = Outside Diameter
- C.I. = Cast Iron
- D.I. = Ductile Iron
- RPC = Rough Pour Concrete
- CL = Centerline
- T.C. = Terra Cotta
- PLAS. = Plastic
- BL = Base Line
- ELEC. = Electric
- TELE = Telephone
- T.H. = Test Hole
- SW = Sidewalk
- DW = Driveway
- BM = Benchmark
- C.B. = Catch Basin
- GV = Gas Valve

Paul R. Cole
Performing out-of-sight work...with vision!
Note: To Eliminate mistakes and check this work, So-Deep suggests you scale and plot all dimensions onto the plans and review all elevations carefully. So-Deep is responsible only for information shown on our forms.

- 08" = 1"
- .16" = 2"
- .25" = 3"
- .33" = 4"
- .42" = 5"
- .50" = 6"
- .58" = 7"
- .67" = 8"
- .75" = 9"
- .83" = 10"
- .92" = 11"
- = Sewer Manhole
- = Test Hole
- ⊕ = Fire Hydrant
- = Pole
- = Fence Line
- ⊗ = Electric Manhole
- ⊕ = T.S. = Traverse Station
- ⊕ = Valve
- ⊕ = Water Meter
- ⊕ = Telephone Manhole
- ⊕ = Telephone Pedestal

FILE NAME = 0876A91-Sh-DET02.DGN	USER NAME = melopez	DESIGNED - JAR	REVISED -	STATE OF ILLINOIS DEPARTMENT OF TRANSPORTATION	MISCELLANEOUS DETAILS SO-DEEP TEST HOLE CERTIFICATION FORM		F.A.I. RTE. = 270	SECTION = 60-IB-1	COUNTY = MADISON	TOTAL SHEETS = 712	SHEET NO. = 538A	
	PLOT SCALE = #SCALE#	DRAWN - JAR	REVISED -		SCALE:	SHEET NO. OF SHEETS	STA. TO STA.	ILLINOIS FED. AID PROJECT				
	PLOT DATE = 3/17/2011	CHECKED - LGP	REVISED -		CONTRACT NO. 76A91							
		DATE -	REVISED -									