

So-Deep Test Hole Certification Form

© So-Deep 1988, 1991

So-Deep, Corporate Office
8397 Euclid Avenue
Manassas Park, VA 20111
(703)361-6005

Control # **SIMB922**
Test Hole # **3**
Plan Scale **1"=50'**
Sheet # **11**
Proposed **BRIDGE REPLACEMENT**
Date **JULY 16, 2009**

Condition of paving prior to work
NO PAVING

City, County, State **MADISON CO., IL**
Gen. Loc. **I-270 W.B. @ CHAIN OF ROCKS CANAL**
Recorded Size/Material/Type **14" (O.D.) COATED STEEL (EXPLORER) GAS LINE**
Foreman/Truck#/Form By **J. CLINE / 219 / P. REYNOLDS**

B.M. 1 Elev. = **429.36'**
is **GIVEN**

Description: (BM 270-11) CHIS "I" FOUND, CENTER OF CONC. PIER BASE FOR E.B. I-270, JUST E OF EAST BANK, CHAIN OF

B.M. 2 Elev. = **429.36'**
is **CALCULATED**

Description: CHIS "X" SET NE CORNER OF CONC. PIER BASE FOR W.B. I-270, JUST E OF EAST BANK, CHAIN OF ROCKS CANAL

Benchmarks check **BY 0.00'**
Elevations are referenced to **B.M.#1**

Recorded Size/Type of utility **WAS FOUND**

There **WERE NOT** additional utilities in the test hole

The utility **WAS** in good condition.

Paving Thickness and type **NO PAVING**

Color of ribbon installed **YELLOW**

Soil Type **MOIST SAND**

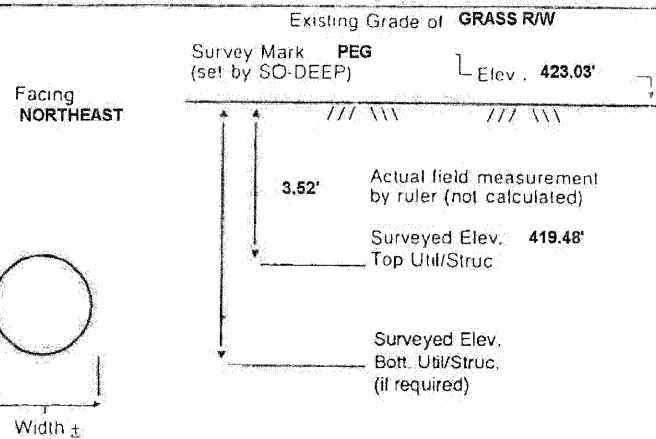
Field Condition **GRASS R/W**

T.H. tied to **PEG**

14" COATED STEEL (EXPLORER) GAS LINE
Size/Material/Type
Portion of pipe exposed for O.D. measurement:
FULL

Remarks: **NONE**

SO-DEEP will attempt to use the BM/PI most applicable to your design. If however, BMs differ by more than .05', resulting differences could cause design conflicts.



So-Deep Test Hole Certification Form

© So-Deep 1988, 1991

So-Deep, Corporate Office
8397 Euclid Avenue
Manassas Park, VA 20111
(703)361-6005

Control # **SIMB922**
Test Hole # **4**
Plan Scale **1"=50'**
Sheet # **11**
Proposed **BRIDGE REPLACEMENT**
Date **JULY 16, 2009**

Condition of paving prior to work
NO PAVING

City, County, State **MADISON CO., IL**
Gen. Loc. **I-270 W.B. @ CHAIN OF ROCKS CANAL**
Recorded Size/Material/Type **6" COATED STEEL (BUCKEYE) GAS LINE**
Foreman/Truck#/Form By **J. CLINE / 219 / P. REYNOLDS**

B.M. 1 Elev. = **429.36'**
is **GIVEN**

Description: (BM 270-11) CHIS "I" FOUND, CENTER OF CONC. PIER BASE FOR E.B. I-270, JUST E OF EAST BANK, CHAIN OF

B.M. 2 Elev. = **429.36'**
is **CALCULATED**

Description: CHIS "X" SET NE CORNER OF CONC. PIER BASE FOR W.B. I-270, JUST E OF EAST BANK, CHAIN OF ROCKS CANAL

Benchmarks check **BY 0.00'**
Elevations are referenced to **B.M.#1**

Recorded Size/Type of utility **WAS FOUND**

There **WERE NOT** additional utilities in the test hole

The utility **WAS** in good condition.

Paving Thickness and type **NO PAVING**

Color of ribbon installed **YELLOW**

Soil Type **MOIST SAND**

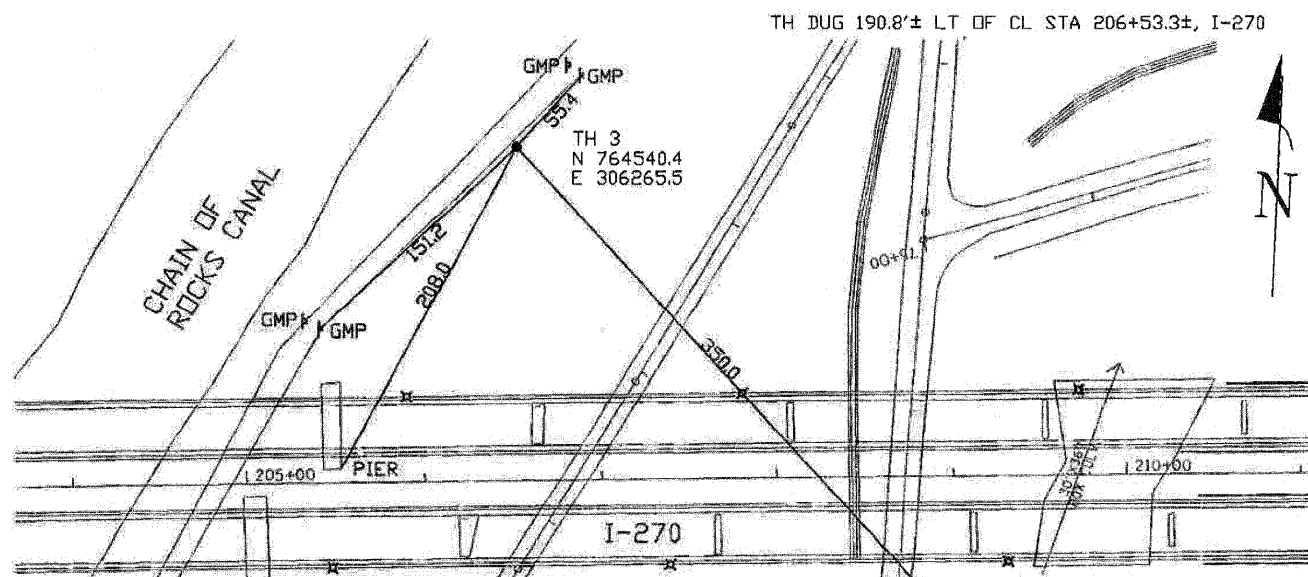
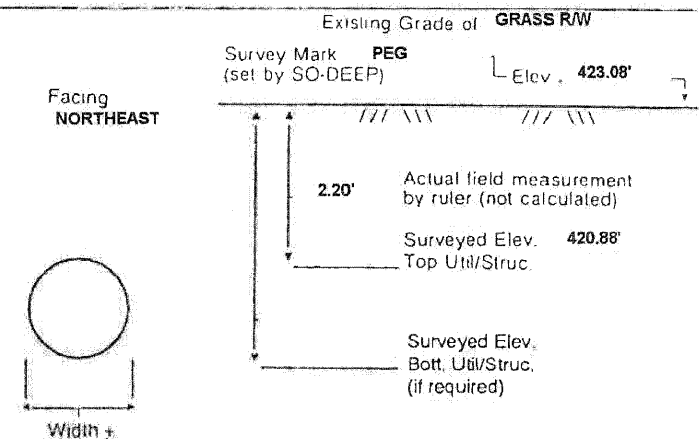
Field Condition **GRASS R/W**

T.H. tied to **PEG**

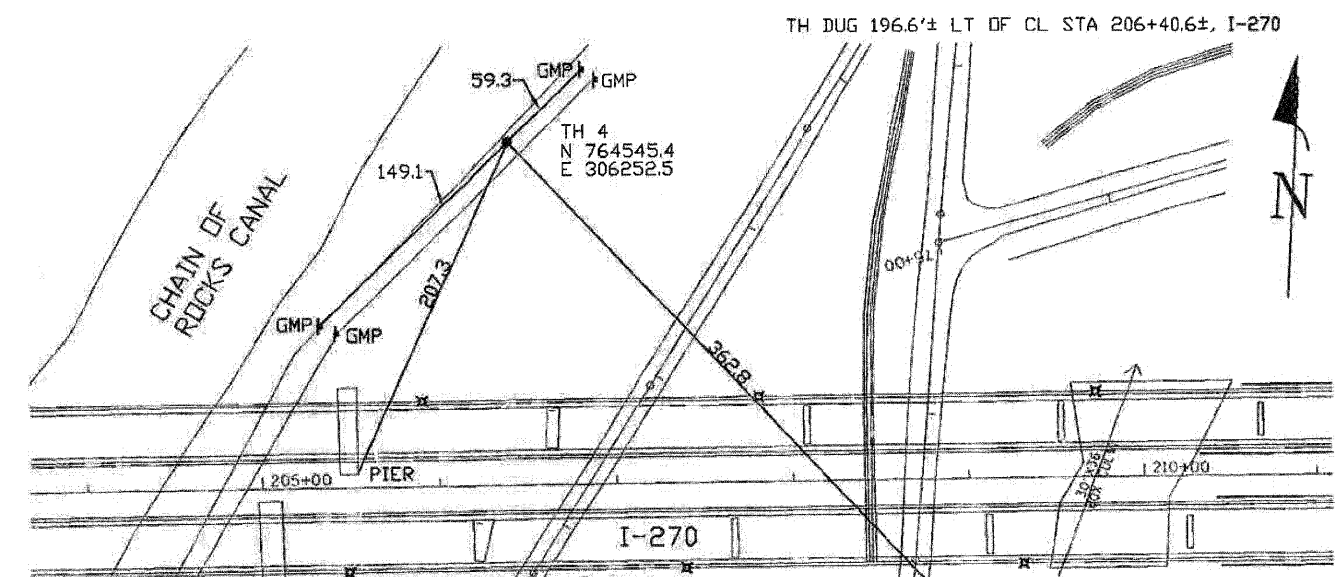
7" COATED STEEL (BUCKEYE) GAS LINE
Size/Material/Type
Portion of pipe exposed for O.D. measurement:
FULL

Remarks: **NONE**

SO-DEEP will attempt to use the BM/PI most applicable to your design. If however, BMs differ by more than .05', resulting differences could cause design conflicts.



- | | | |
|---------------------------|--------------------|-----------------------------|
| R/W = Rights of Way | T.C. = Terra Cotta | ○ = Sewer Manhole |
| N.T.S. = Not to Scale | PLAS. = Plastic | ● = Test Hole |
| * = Not Shown on Plan | BL = Base Line | ⊕ = Fire Hydrant |
| PCC = Precast Concrete | ELEC. = Electric | □ = Pole |
| COND. = Conduit | TELE = Telephone | ⊖ = Fence Line |
| CONC. = Concrete | T.H. = Test Hole | ⊕ = Electric Manhole |
| O.D. = Outside Diameter | SW = Sidewalk | ⊖ = T.S. = Traverse Station |
| C.I. = Cast Iron | DW = Driveway | ⊕ = Valve |
| D.I. = Ductile Iron | BM = Benchmark | ⊕ = Water Meter |
| RPC = Rough Pour Concrete | C.B. = Catch Basin | ⊕ = Telephone Manhole |
| CL = Centerline | GV = Gas Valve | ⊕ = Telephone Pedestal |



- | | | |
|---------------------------|--------------------|-----------------------------|
| R/W = Rights of Way | T.C. = Terra Cotta | ○ = Sewer Manhole |
| N.T.S. = Not to Scale | PLAS. = Plastic | ● = Test Hole |
| * = Not Shown on Plan | BL = Base Line | ⊕ = Fire Hydrant |
| PCC = Precast Concrete | ELEC. = Electric | □ = Pole |
| COND. = Conduit | TELE = Telephone | ⊖ = Fence Line |
| CONC. = Concrete | T.H. = Test Hole | ⊕ = Electric Manhole |
| O.D. = Outside Diameter | SW = Sidewalk | ⊖ = T.S. = Traverse Station |
| C.I. = Cast Iron | DW = Driveway | ⊕ = Valve |
| D.I. = Ductile Iron | BM = Benchmark | ⊕ = Water Meter |
| RPC = Rough Pour Concrete | C.B. = Catch Basin | ⊕ = Telephone Manhole |
| CL = Centerline | GV = Gas Valve | ⊕ = Telephone Pedestal |