

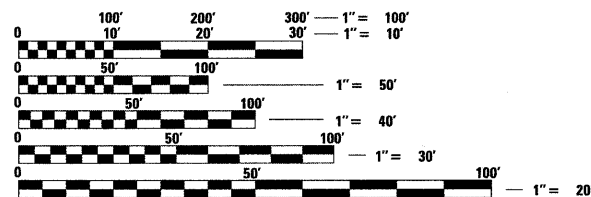
F.A.I. RTE.	SECTION	COUNTY	TOTAL SHEETS	SHEET NO.
270	60B-1-8	MADISON	49	1
		ILLINOIS	CONTRACT NO. 76A92	

INDEX OF SHEETS

- 1 COVER SHEET
- 2 GENERAL NOTES
- 3 SUMMARY OF QUANTITIES
- 4 GUARDRAIL REPAIR
- 5 TRAFFIC CONTROL PLAN - TYPICAL SECTIONS
- 6 LANE CLOSURES SCHEDULE
- 7 TRAFFIC CONTROL PLAN - STAGE 1-1
- 8 TRAFFIC CONTROL PLAN - STAGE 1-2
- 9 TRAFFIC CONTROL PLAN - STAGE 1-3
- 10 TRAFFIC CONTROL PLAN - STAGE 2-1
- 11 TRAFFIC CONTROL PLAN - STAGE 2-2
- 12 TRAFFIC CONTROL PLAN - STAGE 2-3
- 13 CHANGEABLE MESSAGE SIGN PLAN
- 14-49 STRUCTURAL PLANS

HIGHWAY STANDARDS

- 606001-04 CONCRETE CURB TYPE B AND COMBINATION CONCRETE CURB AND GUTTER
- 630001-09 STEEL PLATE BEAM GUARDRAIL
- 631033-04 TRAFFIC BARRIER TERMINAL, TYPE 6B
- 631046-04 TRAFFIC BARRIER TERMINAL, TYPE 10
- 635006-03 REFLECTOR AND TERMINAL MARKER PLACEMENT
- 635011-02 REFLECTOR MARKER AND MOUNTING DETAILS
- 701400-05 APPROACH TO LANE CLOSURE, FREEWAY/EXPRESSWAY
- 701401-06 LANE CLOSURE FREEWAY/EXPRESSWAY
- 701411-07 LANE CLOSURE MULTILANE AT ENTRANCE OR EXIST RAMP FOR SPEEDS > 45 MPH
- 701901-01 TRAFFIC CONTROL DEVICES
- 720011-01 METAL POSTS FOR SIGNS, MARKERS & DELINEATORS
- 728001-01 TELESCOPING STEEL SIGN SUPPORT
- 729001-01 APPLICATIONS OF TYPES A&B METAL POSTS (FOR SIGNS & MARKERS)
- 780001-02 TYPICAL PAVEMENT MARKINGS



FULL SIZE PLANS HAVE BEEN PREPARED USING STANDARD ENGINEERING SCALES. REDUCED SIZED PLANS WILL NOT CONFORM TO STANDARD SCALES. IN MAKING MEASUREMENTS ON REDUCED PLANS, THE ABOVE SCALES MAY BE USED.

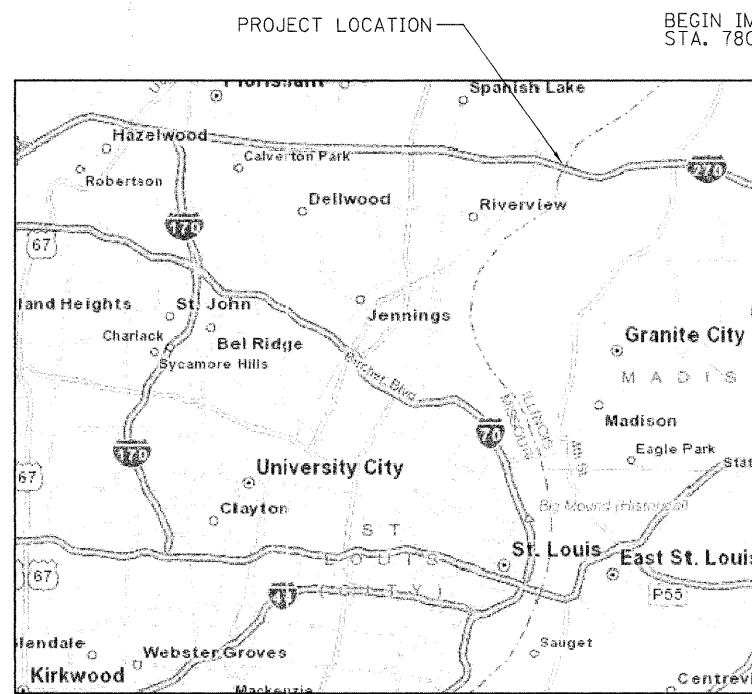
J.U.L.I.E.
JOINT UTILITY LOCATION INFORMATION FOR EXCAVATION
1-800-892-0123
OR 811

STATE OF ILLINOIS DEPARTMENT OF TRANSPORTATION DIVISION OF HIGHWAYS PROPOSED HIGHWAY PLANS

FAI ROUTE 270 (I-270) SECTION 60 B-1-8

REHABILITATION OF BRIDGE OVER MISSISSIPPI RIVER MADISON COUNTY

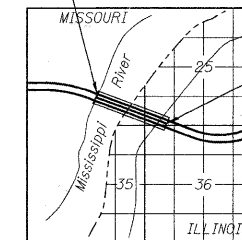
C-98-069-07



LOCATION MAP

(NOT TO SCALE)
GROSS LENGTH = 5411 FT. = 1.02 MILES
NET LENGTH = 5411 FT. = 1.02 MILES

BEGIN IMPROVEMENTS
STA. 780+00.25



END IMPROVEMENTS
STA. 834+11.25

LOCATION SKETCH



Ricardo A. Mantay Jr.
SIGNATURE

3/23/2011
DATE

LICENSE EXPIRES 11-30-2011

PROJECT ENGINEER - PATTI LeBEAU, P.E. (618) 346-3179
PROJECT MANAGER - ART MUEHLFELD (618) 346-3209

CONTRACT NO. 76A92



PARSONS
400 WOODS MILL RD. SOUTH, SUITE 330
CHESTERFIELD, MO. 63017
PHONE: 314-434-2900

STATE OF ILLINOIS
DEPARTMENT OF TRANSPORTATION
DIVISION OF HIGHWAYS

SUBMITTED March 24 20 11

Mary C. Jame
DEPUTY DIRECTOR OF HIGHWAYS, REGION ENGINEER

May 13 20 11

Scott E. Stitt P.E. Ia
ACTING ENGINEER OF DESIGN AND ENVIRONMENT

May 13 20 11

Christina M. Rosella
DIRECTOR OF HIGHWAYS, CHIEF ENGINEER

**PRINTED BY THE AUTHORITY
OF THE STATE OF ILLINOIS**