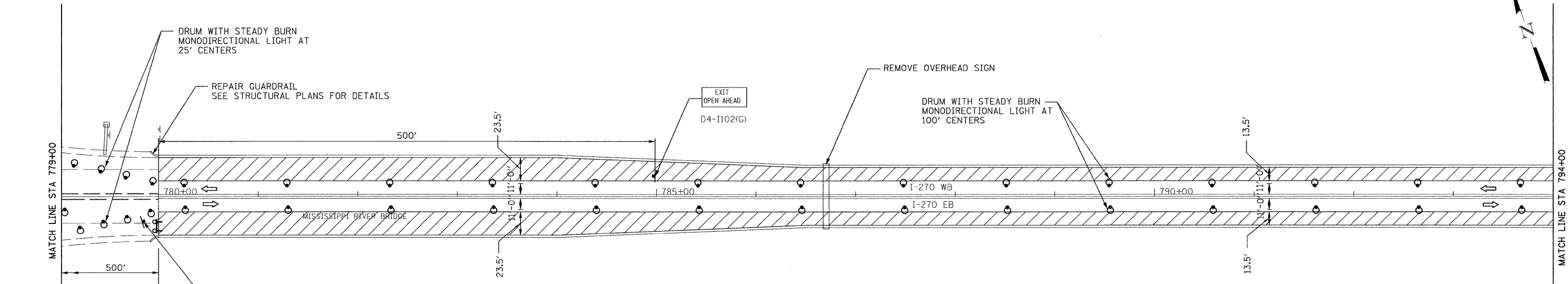
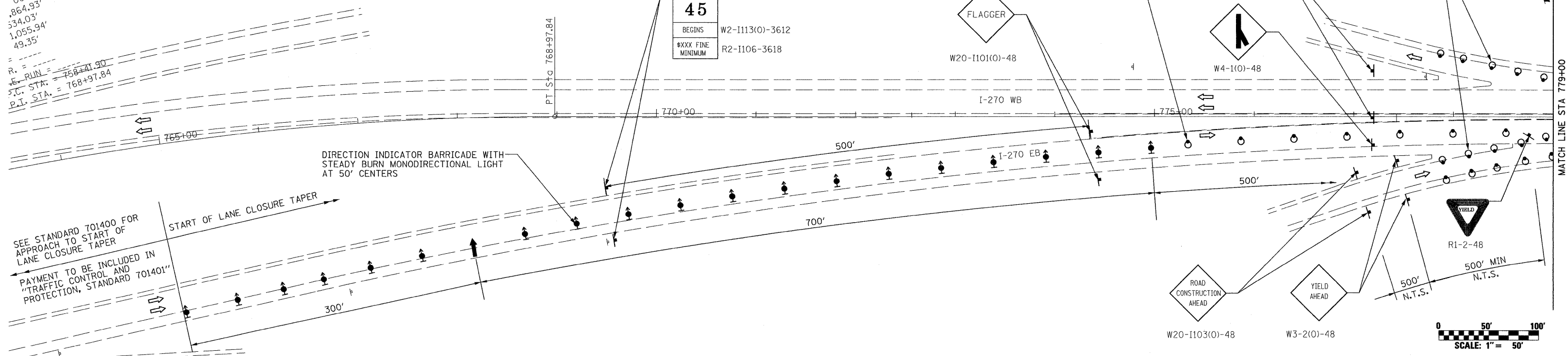


JRVE MOCL-B-1  
 = 763+75.93  
 07' 04" (RT)  
 00' 00"  
 .864.93'  
 534.03'  
 1,055.94'  
 49.35'

R. =  
 P. RUN = 758+41.90  
 P.C. STA. = 768+97.84  
 P.T. STA. = 768+97.84

WORK ZONE W2-I115(O)-3618  
**SPEED LIMIT 45**  
 R2-1-3648  
 BEGINS W2-I113(O)-3612  
 \$XXX FINE MINIMUM R2-I106-3618



**LEGEND:**

- DIRECTION OF TRAFFIC FLOW
- DIRECTION INDICATOR BARRICADE WITH STEADY BURN MONODIRECTIONAL LIGHT
- DRUM WITH STEADY BURN MONODIRECTIONAL LIGHT
- TYPE III BARRICADE WITH FLASHING LIGHTS
- ARROW BOARD
- SIGN
- EXIST. STEEL PLATE BEAM GUARDRAIL
- PROPOSED STEEL PLATE BEAM GUARDRAIL, TYPE A
- CONSTRUCTION IN THIS STAGE

**NOTES:**

1. REFER TO STANDARD 701400, 701401 AND 701411 FOR ADDITIONAL SIGNING REQUIREMENTS.
2. REFER TO SHEET 6 OF 49 FOR LANE CLOSURE SCHEDULE.
3. CHANGEABLE MESSAGE SIGNS IN THE VICINITY OF THE PROJECT SHALL BE INSTALLED BY THE CONTRACTOR A MINIMUM OF 2 WEEKS PRIOR TO BEGINNING CONSTRUCTION. FOR NUMBER AND LOCATION OF MESSAGE SIGNS SEE SHEET 13 OF 49.

|                        |                    |                |           |   |   |  |  |                                  |                    |                   |                    |                |
|------------------------|--------------------|----------------|-----------|---|---|--|--|----------------------------------|--------------------|-------------------|--------------------|----------------|
| FILE NAME =<br>\$FILE# | USER NAME = #USER# | DESIGNED - EVI | REVISED - | <b>STATE OF ILLINOIS<br/>DEPARTMENT OF TRANSPORTATION</b> | <b>TRAFFIC CONTROL PLAN<br/>STAGE 1-1</b> |  |  | F.A.T.<br>RTE.<br>270            | SECTION<br>608-I-8 | COUNTY<br>MADISON | TOTAL SHEETS<br>49 | SHEET NO.<br>7 |
| PLOT SCALE = #SCALE#   |                    | CHECKED - WCO  | REVISED - |   | SCALE: 1" = 50'                           |  |  | SHEET NO. OF SHEETS STA. TO STA. |                    |                   | CONTRACT NO. 76A92 |                |
| PLOT DATE = 3/23/2011  |                    | DRAWN - EVI    | REVISED - |   | ILLINOIS FED. AID PROJECT                 |  |  |                                  |                    |                   |                    |                |
|                        |                    | CHECKED - WCO  | REVISED - |   |   |  |  |                                  |                    |                   |                    |                |