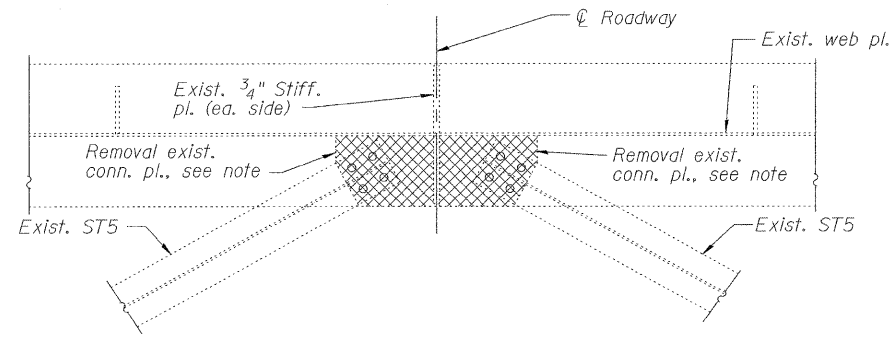
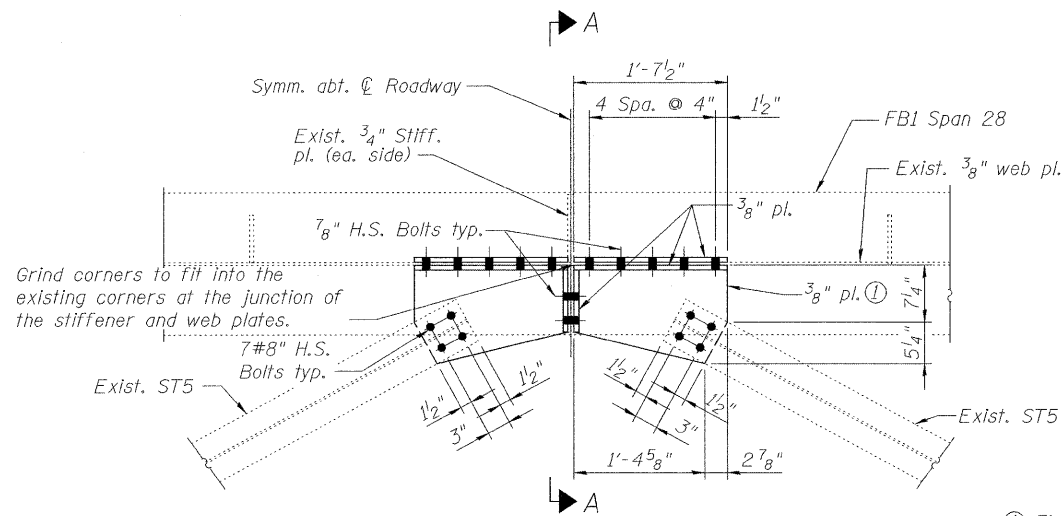


STATE OF ILLINOIS  
DEPARTMENT OF TRANSPORTATION



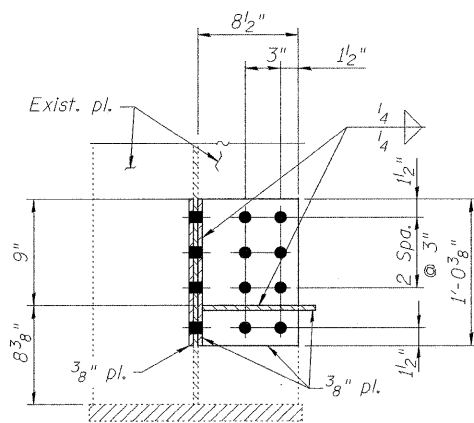
REMOVAL PLAN - EAST AND WESTBOUND STRUCTURE

Note: Field cut and remove existing connection plate, bolts and the damaged section of the existing ST5 as indicated. Remaining surfaces shall be ground smooth. See Special Provisions.

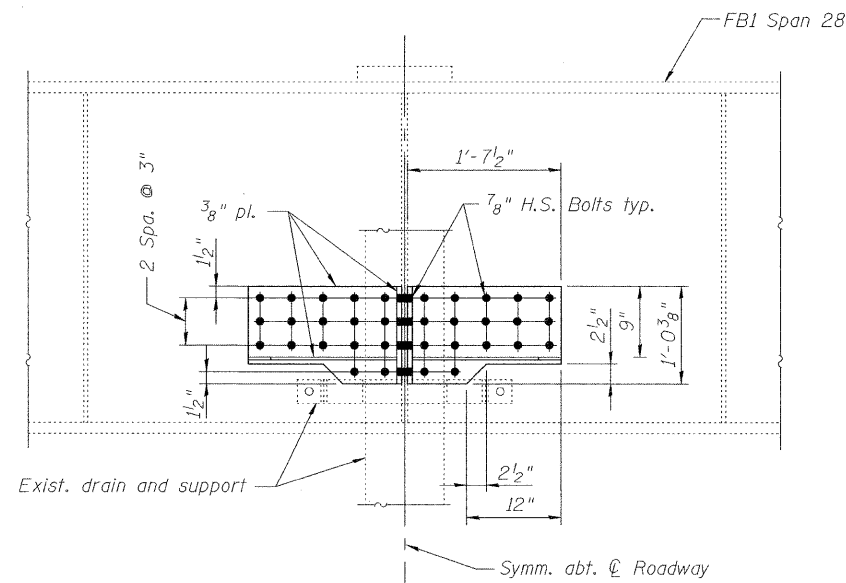


REPAIR PLAN - EAST AND WESTBOUND STRUCTURE  
FLOORBEAM AT PIER 28

① Field verify dimensions of plate based on location of field cut of existing ST5.

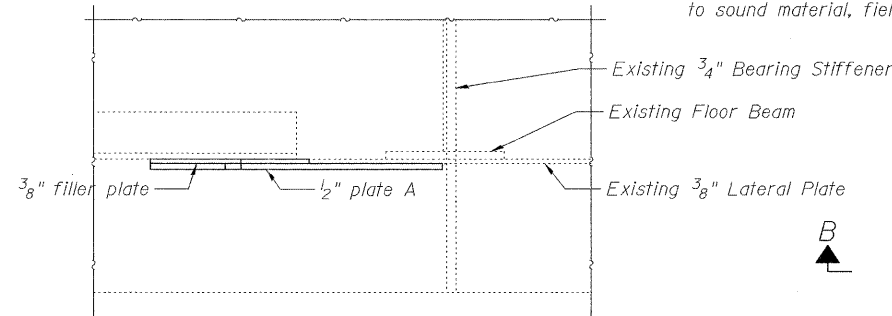


SECTION A-A



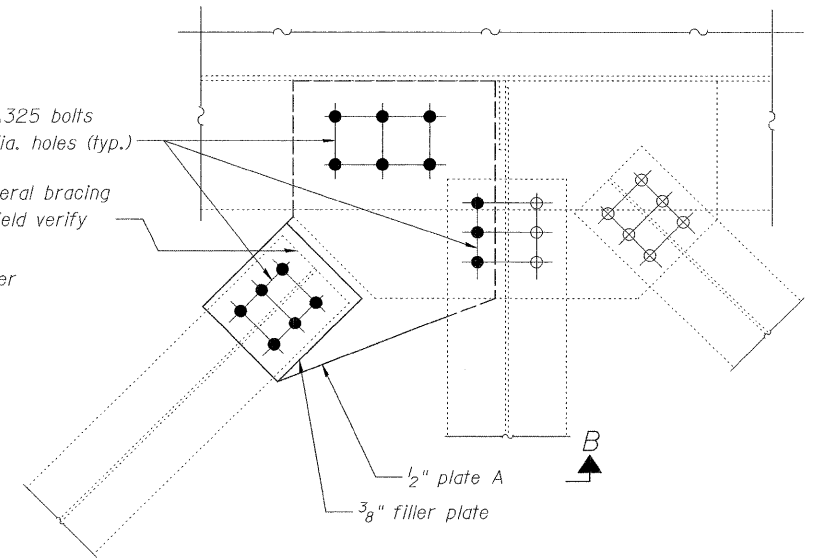
ELEVATION - EAST AND WESTBOUND STRUCTURE

Existing ST5 not shown for clarity.



Note: bolts not shown for clarity

SECTION B-B



PLAN LATERAL BRACING REPAIR - SPAN 18 - FB 1 @ GIRDER 3

All dimensions and plate sizes need to be field verified

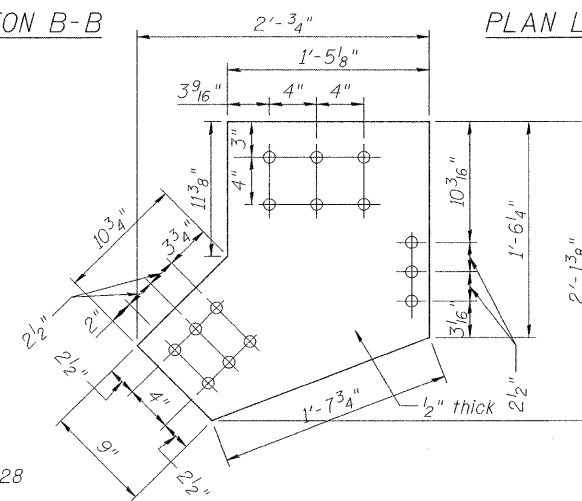
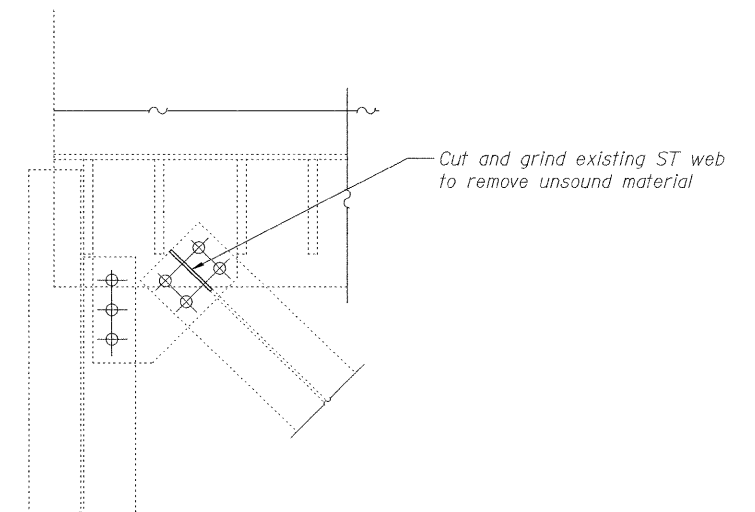


PLATE A



LATERAL BRACING REPAIR - SPAN 15 - FB 1 @ GIRDER 4

BILL OF MATERIAL

Item	Unit	Total
Structural Steel Repair	Pounds	350

STEEL REPAIR DETAILS - 4  
STRUCTURE NO. 060-0035

SHEET NO.	F.A.I. RTE.	SECTION	COUNTY	TOTAL SHEETS	SHEET NO.
19	270	60B-1-8	MADISON	49	32
36 SHEETS			CONTRACT NO. 76A92		
FED. ROAD DIST. NO. 8 ILLINOIS FED. AID PROJECT					

DESIGNED	TMB
CHECKED	TSB
DRAWN	JGC / TMB
CHECKED	TSB



**PARSONS**  
400 WOODS MILL RD. SOUTH, SUITE 330  
CHESTERFIELD, MO. 63017  
PHONE: 314.434.2900