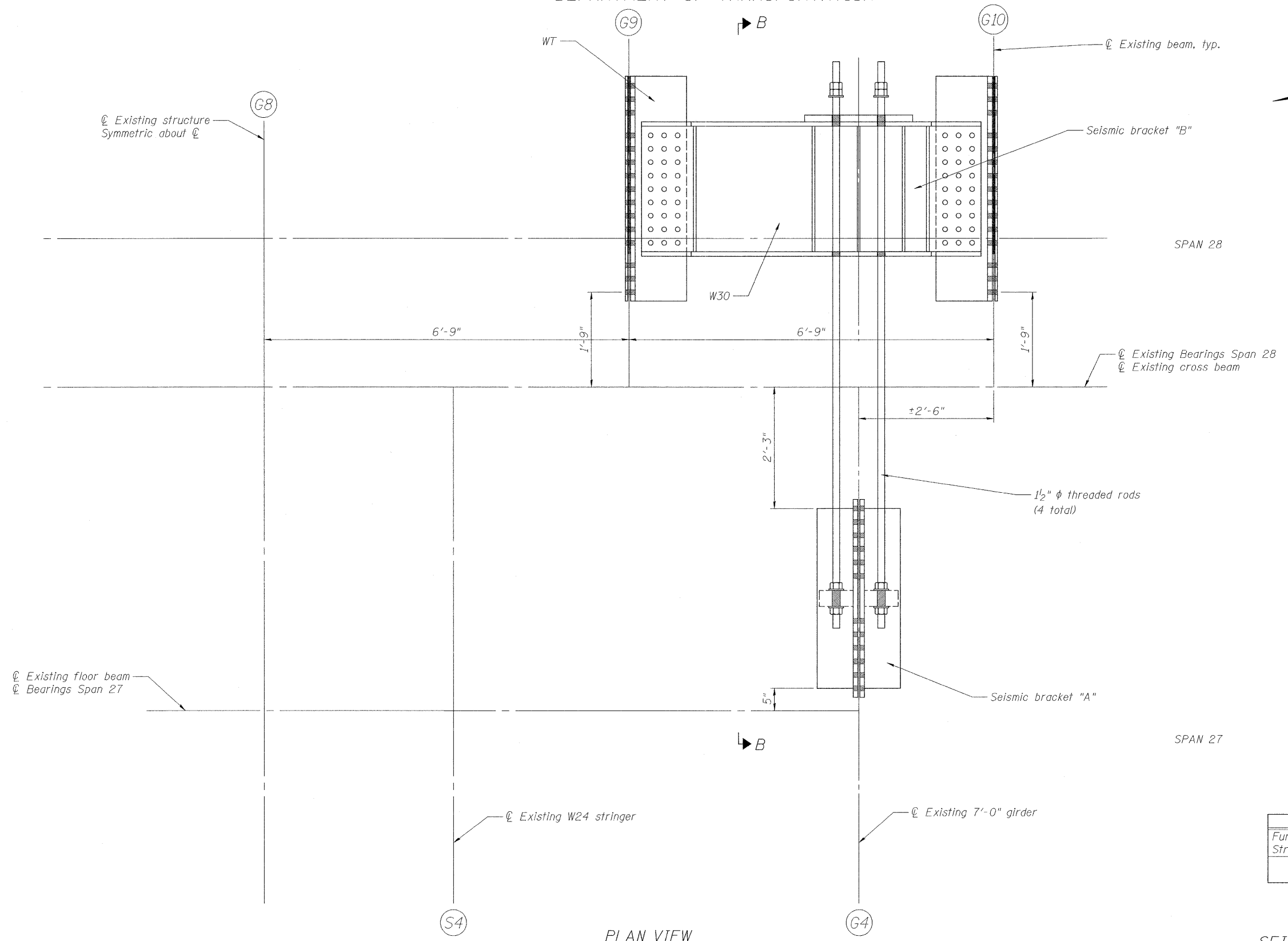


STATE OF ILLINOIS  
DEPARTMENT OF TRANSPORTATION



**PLAN VIEW**

Pier 28 Eastbound shown  
Pier 28 Westbound similar


Note: Expansion joint and existing steel not shown for clarity.  
For additional details see sheets 23 - 28.

**BILL OF MATERIAL**

Item	Unit	Total
Furnishing and Erecting Structural Steel	Pound	20,740

**SEISMIC RESTRAINER - NEAR PIER 28**

DESIGNED	NJM
CHECKED	RM
DRAWN	JVK
CHECKED	NJM



**PARSONS**  
400 WOODS MILL RD. SOUTH, SUITE 330  
CHESTERFIELD, MO. 63017  
PHONE: 314.434.2900

SHEET NO. 24	F.A.I. RTE.	SECTION	COUNTY	TOTAL SHEETS	SHEET NO.
	270	60B-I-8	MADISON	49	37
36 SHEETS	CONTRACT NO. 76A92			FED. ROAD DIST. NO. 8 ILLINOIS FED. AID PROJECT	

L:\647178-Chair of Rocks\04 Design\CADD\Sheet Files\0608035-76A92-024-Restrainer-2.dgn