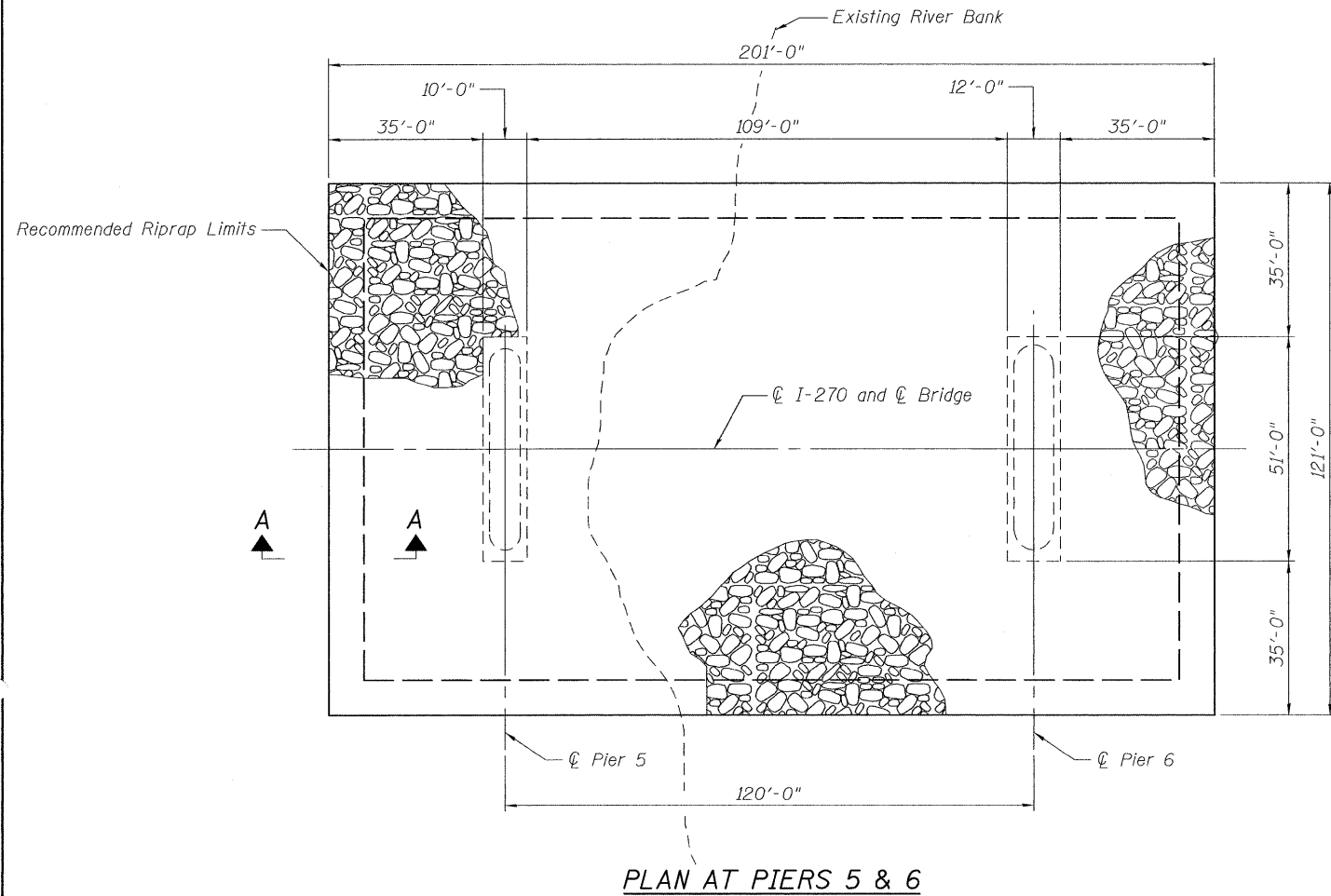
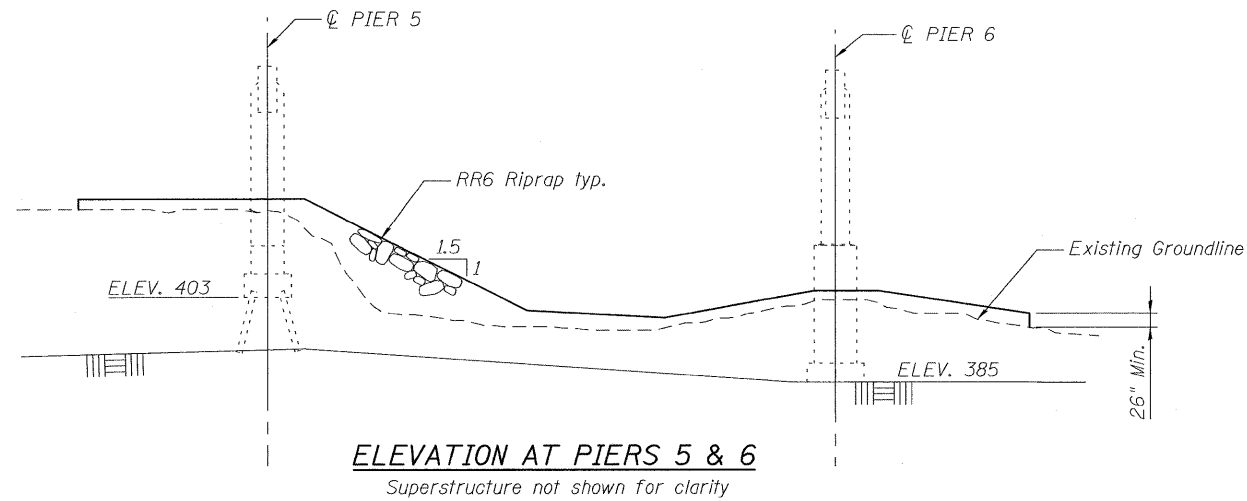


STATE OF ILLINOIS
DEPARTMENT OF TRANSPORTATION



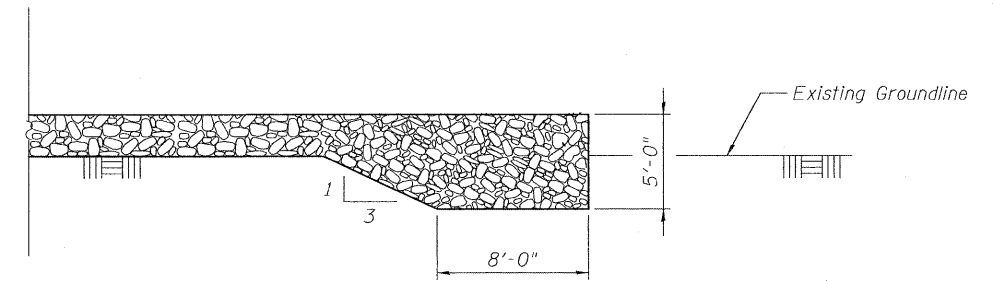
Notes:

Plan dimensions and details relative to existing structure have been taken from existing plans and are subject to nominal construction variations. It shall be the Contractor's responsibility to verify such dimensions and details in the field and make necessary approved adjustments prior to construction or ordering of materials. Such variations shall not be cause for additional compensation for a change in the scope of the work, however, the Contractor will be paid for the quantity actually furnished at the unit price bid for the work.

The Contractor shall exercise care when placing riprap adjacent to the piers. Any damage done to the structure shall be repaired at the Contractor's expense.

Debris shall be removed from around the piers prior to placement of riprap.

Riprap shall be placed as directed by the Engineer.



Flank detail to be installed continuously on all four sides.

BILL OF MATERIAL

Item	Unit	Quantity
Stone Dumped Riprap, Class A6	Ton	11,200

SCOUR PROTECTION PIERS 5 & 6
STRUCTURE NO. 060-0035

DESIGNED	TSB
CHECKED	TMB
DRAWN	TSB
CHECKED	TMB

PARSONS
400 WOODS MILL RD. SOUTH, SUITE 330
CHESTERFIELD, MO. 63017
PHONE: 314.434.2900

SHEET NO. 34	F.A.I. RTE.	SECTION	COUNTY	TOTAL SHEETS	SHEET NO.
	270	60B-I-8	MADISON	49	47
36 SHEETS			CONTRACT NO. 76A92		
FED. ROAD DIST. NO. 8 ILLINOIS FED. AID PROJECT					