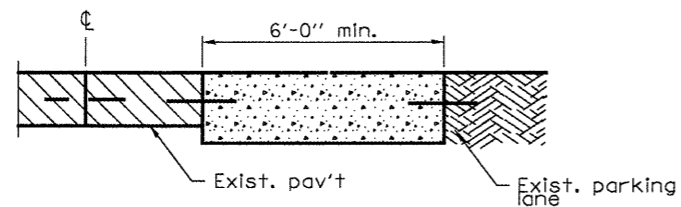
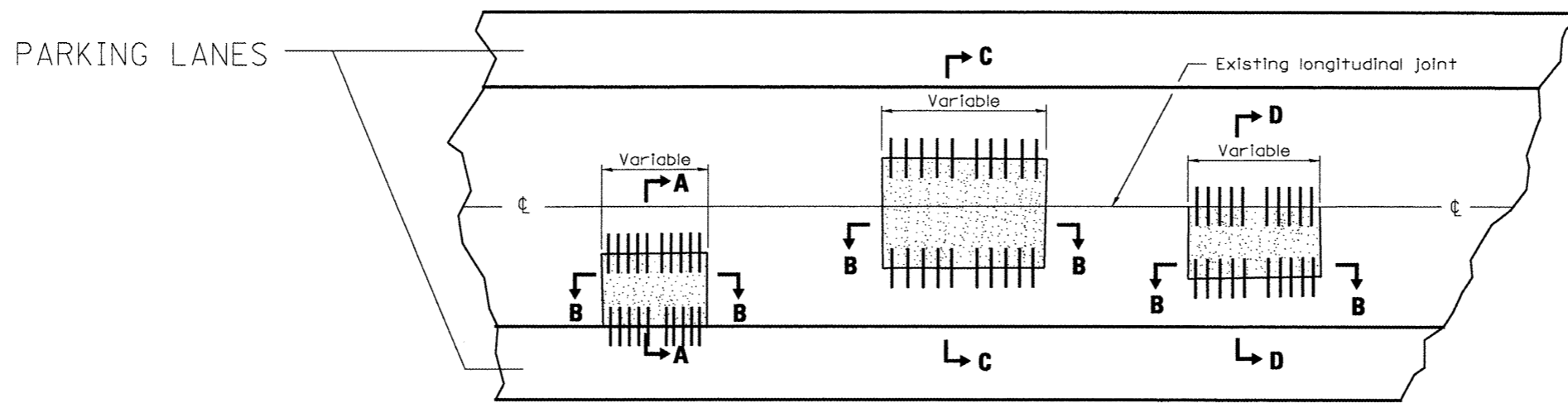
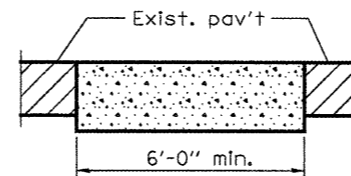


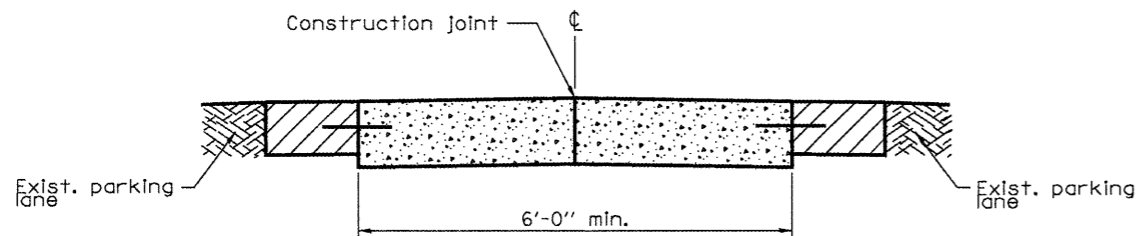
CLASS B (SPECIAL) PATCHING DETAILS



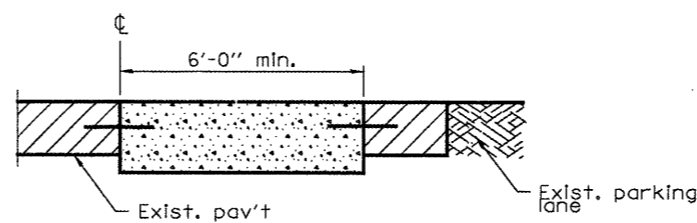
SECTION A-A



SECTION B-B



SECTION C-C
(Built in two operations)



SECTION D-D

Dowel bars shall be placed at 1'-0" centers

All dimensions are in inches (millimeters) unless otherwise shown.

DOWEL BAR TABLE		
PAVEMENT THICKNESS	DOWEL BAR DIAMETER	HOLE DIAMETER
8 (200) or greater	1/2 (38)	1 5/8 (41)
7 (180) thru 7.99 (199)	1/4 (32)	1 3/8 (35)
Less than 7 (180)	1 (25)	1 1/8 (29)

FILE NAME =	USER NAME = #USER#	DESIGNED - ---	REVISED - ---
#FILE#		DRAWN - ---	REVISED - ---
	PLOT SCALE = #SCALE#	CHECKED - ---	REVISED - ---
	PLOT DATE = #DATE#	DATE - -----	REVISED - ---

STATE OF ILLINOIS
DEPARTMENT OF TRANSPORTATION

CLASS B PATCHING (SPECIAL) DETAILS

SCALE: _____ SHEET NO. ___ OF ___ SHEETS STA. _____ TO STA. _____

F.A.P. RTE.	SECTION	COUNTY	TOTAL SHEETS	SHEET NO.
600	(51,132)RS-4	.	23	19
FED. ROAD DIST. NO. _____ ILLINOIS FED. AID PROJECT			CONTRACT NO. 76B79	

MONROE, RANDOLPH