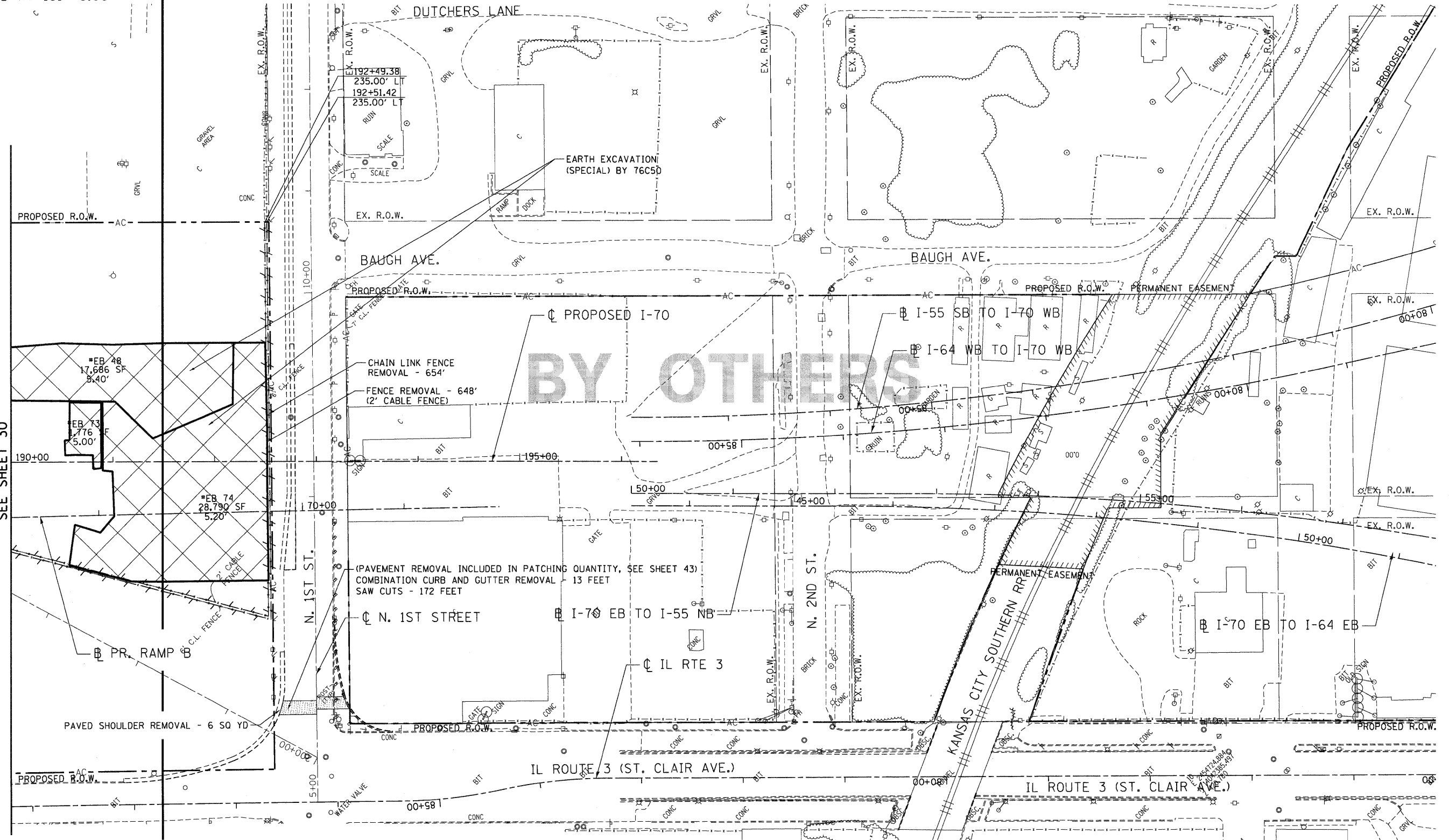


CONTRACT LIMITS
END AT 191+49.00

CONTRACT 76C50
BY OTHERS

MATCH LINE STA. 190+00
SEE SHEET 30



LEGEND

	PAVEMENT REMOVAL		LINEAR REMOVALS
	CONCRETE REMOVAL (SPECIAL). SEE R. MIN. ELEV. FOR REMOVAL LIMITS.		TREE REMOVAL
	TREE REMOVAL, ACRES		TREE REMOVAL DELINEATION POINTS

*EB I.D.
TOTAL AREA (SF)
AVG. DEPTH (FT)

LIMITS OF ARCHAEOLOGICAL EXPLORATION. EARTH EXCAVATION (SPECIAL) AS REQUIRED UNDER PROPOSED ROADWAY SECTION
*EB = EXCAVATION BLOCK

FILE NAME =
\$FILEL\$

TENG & ASSOCIATES, INC.
ENGINEERS/ARCHITECTS/PLANNERS
CHICAGO, ILLINOIS

USER NAME = #USER#
DESIGNED - JB
DRAWN - JB
PLLOT SCALE = \$SCALE\$
CHECKED - ACL
DATE - 02/04/11
REVISED -
REVISED -
REVISED -
REVISED -

DESIGNED - JB	REVISED -
DRAWN - JB	REVISED -
CHECKED - ACL	REVISED -
DATE - 02/04/11	REVISED -

DESIGNED - JB	REVISED -
DRAWN - JB	REVISED -
CHECKED - ACL	REVISED -
DATE - 02/04/11	REVISED -

STATE OF ILLINOIS
DEPARTMENT OF TRANSPORTATION
I-70 CONNECTION

PROPOSED I-70
EXISTING PLAN & REMOVALS
STA. 190+00 TO TRI-LEVEL

SCALE: 1"=50'
SHEET NO. OF SHEETS STA. TO STA.

F.A.P. RTE.	SECTION	COUNTY	TOTAL SHEETS	SHEET NO.
998	82-1A	ST. CLAIR	190	31

FED. ROAD DIST. NO. ILLINOIS FED. AID PROJECT