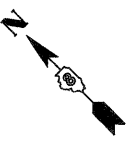
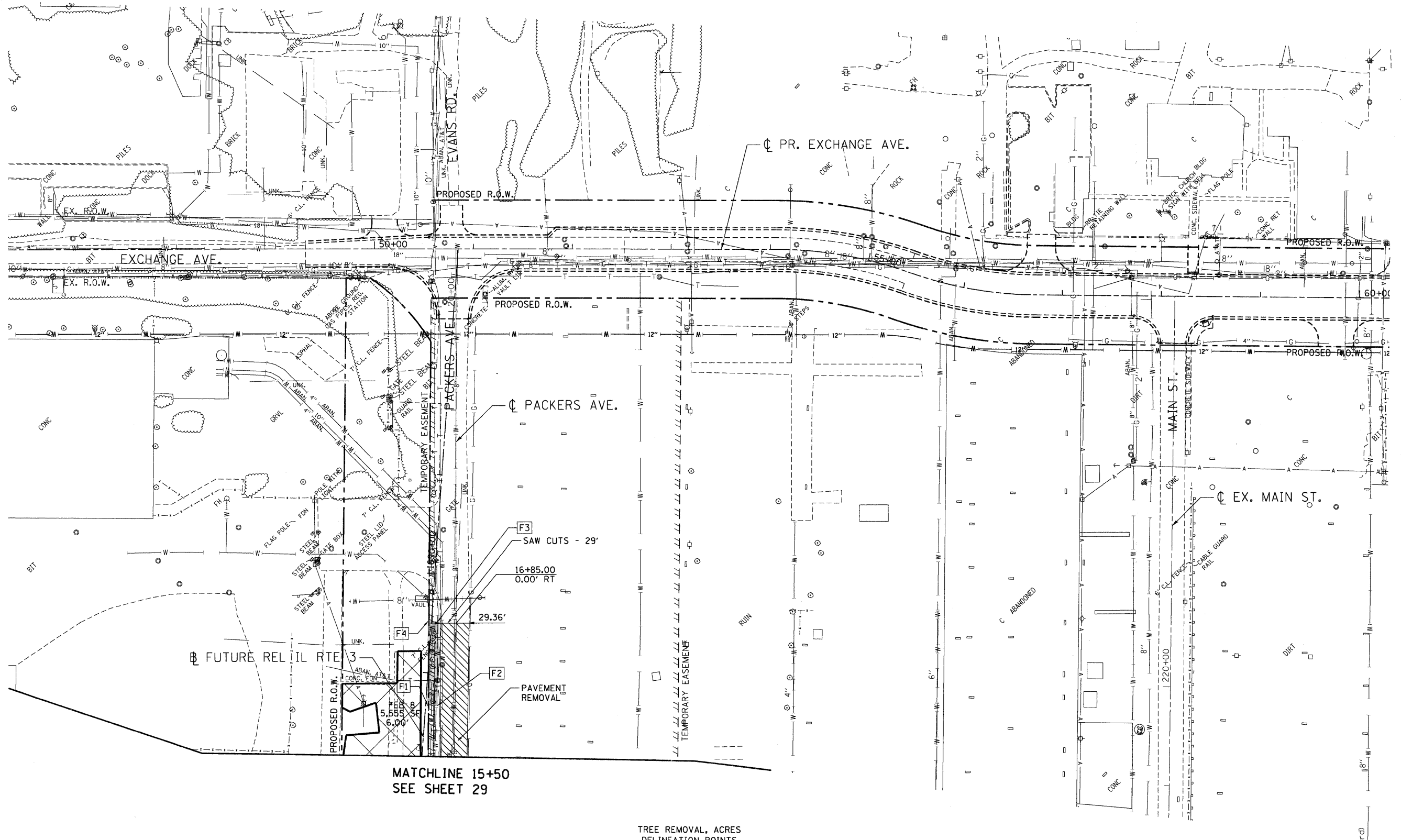


\D:\CONNS\99-MOTIF1.DGN, \D:\CONNS\93-GEOMETRICS.DGN, \D:\CONNS\96-LEGEND.DGN, \D:\CONNS\96-MOTIF1.DGN, \D:\CONNS\96-FORBER.DGN, \D:\CONNS\96-MOTIF1.DGN, \D:\CONNS\99-EN\WORKLOG.DGN
 \D:\CONNS\99-MOTIF1.DGN, \D:\CONNS\93-GEOMETRICS.DGN, \D:\CONNS\96-LEGEND.DGN, \D:\CONNS\96-MOTIF1.DGN, \D:\CONNS\96-FORBER.DGN, \D:\CONNS\96-MOTIF1.DGN, \D:\CONNS\99-EN\WORKLOG.DGN
 2-04-2011, 15:58:58



MATCHLINE 15+50
SEE SHEET 29

TREE REMOVAL, ACRES
DELINEATION POINTS

LOCATION	VERTEX I.D.	STATION	OFFSET	AREA ACRE
PACKERS	F1	16+02	28 LT	
	F2	16+02	18 LT	
	F3	16+87	19 LT	
	F4	16+87	29 LT	0.02

LEGEND

- PAVEMENT REMOVAL
- CONCRETE REMOVAL (SPECIAL). SEE R. MIN. ELEV. FOR REMOVAL LIMITS.
- TREE REMOVAL, ACRES
- LINEAR REMOVALS
- TREE REMOVAL
- TREE REMOVAL DELINEATION POINTS
- LIMITS OF ARCHAEOLOGICAL EXPLORATION, EARTH EXCAVATION (SPECIAL) AS REQUIRED UNDER PROPOSED ROADWAY SECTION
- *EB = EXCAVATION BLOCK

FILE NAME =
 #FILEL#
TENG TENG & ASSOCIATES, INC.
 ENGINEERS/ARCHITECTS/PLANNERS
 CHICAGO, ILLINOIS

USER NAME = #USER#	DESIGNED - JB	REVISED -
PLOT SCALE = #SCALE#	DRAWN - JB	REVISED -
PLOT DATE = #DATE#	CHECKED - ACL	REVISED -
	DATE - 02/04/11	REVISED -

STATE OF ILLINOIS
DEPARTMENT OF TRANSPORTATION
 I-70 CONNECTION

EXISTING PACKERS AVENUE
EXISTING PLAN & REMOVALS
STA. 15+50 TO STA. 17+00

SCALE: 1"=50' SHEET NO. OF SHEETS STA. TO STA.

F.A.P. RTE.	SECTION	COUNTY	TOTAL SHEETS	SHEET NO.
998	82-1A	ST. CLAIR	190	33
FED. ROAD DIST. NO.		ILLINOIS FED. AID PROJECT		
		CONTRACT NO. 76C41		