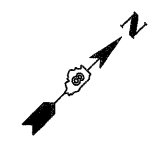
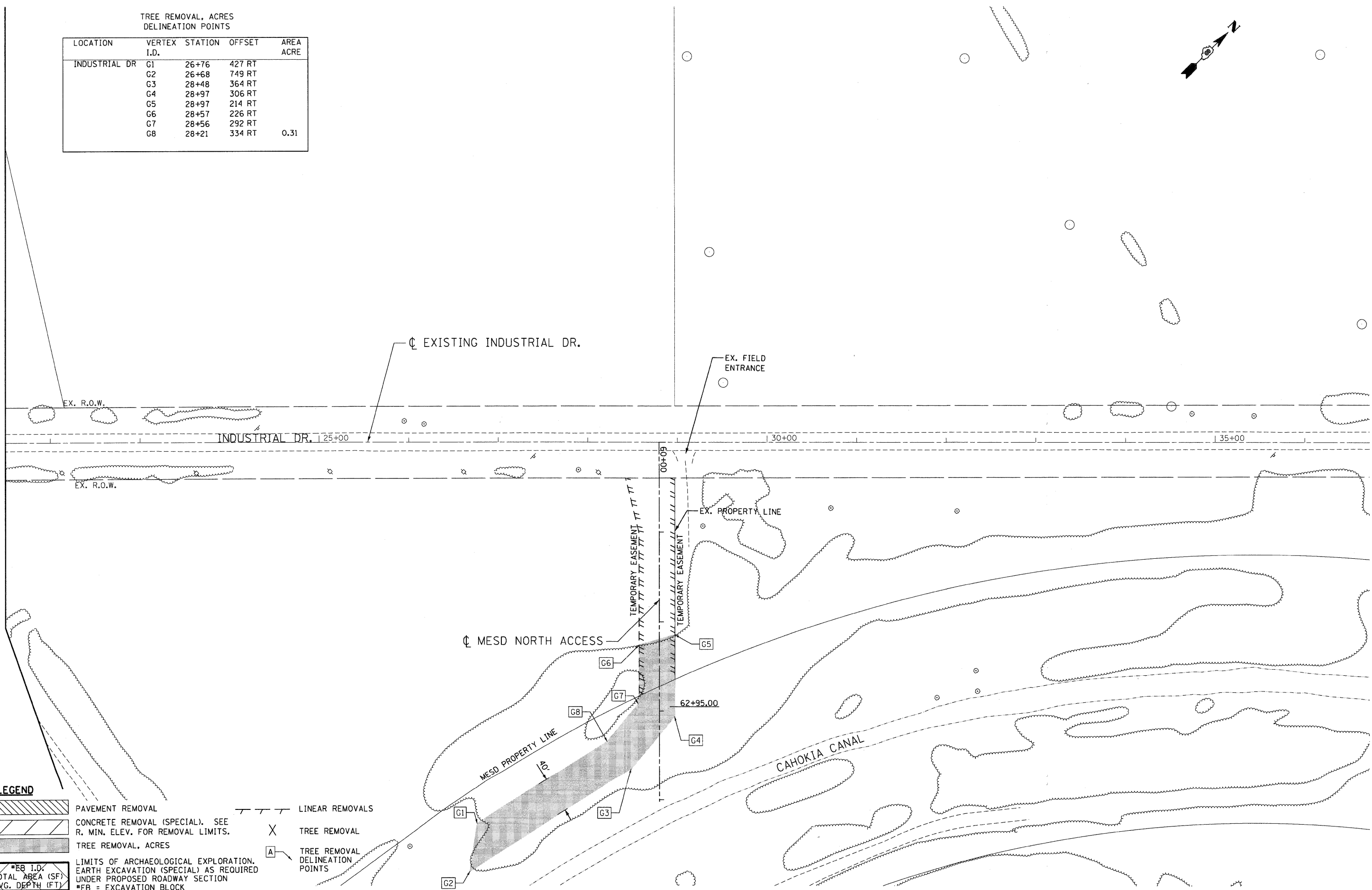


TREE REMOVAL, ACRES DELINEATION POINTS				
LOCATION	VERTEX I.D.	STATION	OFFSET	AREA ACRE
INDUSTRIAL DR	G1	26+76	427 RT	0.31
	G2	26+68	749 RT	
	G3	28+48	364 RT	
	G4	28+97	306 RT	
	G5	28+97	214 RT	
	G6	28+57	226 RT	
	G7	28+56	292 RT	
	G8	28+21	334 RT	



MATCH LINE STA. 21+50
SEE SHEET 27



LEGEND

- PAVEMENT REMOVAL
- CONCRETE REMOVAL (SPECIAL). SEE R. MIN. ELEV. FOR REMOVAL LIMITS.
- TREE REMOVAL, ACRES
- LIMITS OF ARCHAEOLOGICAL EXPLORATION. EARTH EXCAVATION (SPECIAL) AS REQUIRED UNDER PROPOSED ROADWAY SECTION
- *EB I.D. TOTAL AREA (SF) AVG. DEPTH (FT) *EB = EXCAVATION BLOCK
- LINEAR REMOVALS
- TREE REMOVAL
- TREE REMOVAL DELINEATION POINTS

\D:\CONTRACTS\99-06-MOTIF\LDN... \D:\CONTRACTS\99-06-MOTIF\LDN... \D:\CONTRACTS\99-06-MOTIF\LDN... \D:\CONTRACTS\99-06-MOTIF\LDN... \D:\CONTRACTS\99-06-MOTIF\LDN...
 2-04-2011 15:58:35

FILE NAME =	USER NAME = #USER#	DESIGNED - JB	REVISED -
#FILEL#		DRAWN - JB	REVISED -
	PLOT SCALE = #SCALE#	CHECKED - ACL	REVISED -
	PLOT DATE = #DATE#	DATE - 02/04/11	REVISED -

**STATE OF ILLINOIS
DEPARTMENT OF TRANSPORTATION**
I-70 CONNECTION

PROPOSED MESD NORTH ACCESS EXISTING PLAN & REMOVALS STA. 60+00 TO STA. 64+00			
SCALE: 1"=50'	SHEET NO. OF SHEETS	STA. TO STA.	

F.A.P. RTE.	SECTION	COUNTY	TOTAL SHEETS	SHEET NO.
998	82-1A	ST. CLAIR	190	34
FED. ROAD DIST. NO.		ILLINOIS FED. AID PROJECT		

CONTRACT NO. 76C41	
---------------------------	--