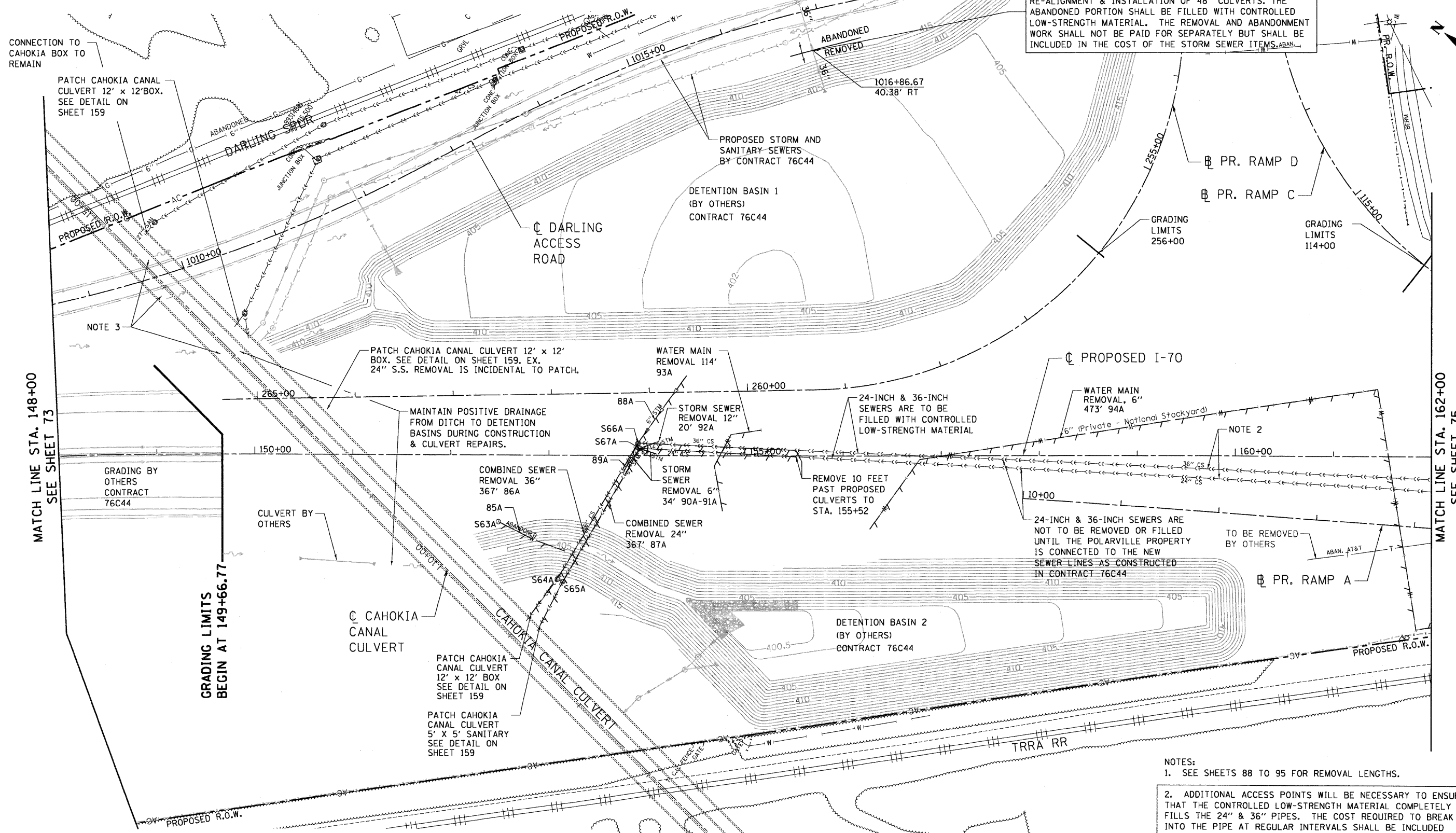


TEMPORARY CONNECTION TO BE ABANDONED/REMOVED UPON COMPLETION OF POLARVILLE SEWER SERVICE RE-ALIGNMENT & INSTALLATION OF 48" CULVERTS. THE ABANDONED PORTION SHALL BE FILLED WITH CONTROLLED LOW-STRENGTH MATERIAL. THE REMOVAL AND ABANDONMENT WORK SHALL NOT BE PAID FOR SEPARATELY BUT SHALL BE INCLUDED IN THE COST OF THE STORM SEWER ITEMS.



- NOTES:
- SEE SHEETS 88 TO 95 FOR REMOVAL LENGTHS.
 - ADDITIONAL ACCESS POINTS WILL BE NECESSARY TO ENSURE THAT THE CONTROLLED LOW-STRENGTH MATERIAL COMPLETELY FILLS THE 24" & 36" PIPES. THE COST REQUIRED TO BREAK INTO THE PIPE AT REGULAR INTERVALS SHALL BE INCLUDED IN THE COST OF THE CONTROLLED LOW-STRENGTH MATERIAL.
 - DITCHES SHALL BE RESTORED TO THE PROPOSED FINAL CONDITION AS SHOWN IN CONTRACT 76C44 IN AREAS AFFECTED BY CONSTRUCTION.
 - ALL PIPES ABANDONED AND FILLED WITH CONTROLLED LOW-STRENGTH MATERIAL SHALL BE PLUGGED PER THE DETAIL ON SHEET 107, AND PER APPROVAL OF THE ENGINEER.

LEGEND

□ EX. INLET	—○— EX. SANITARY SEWER	—CC— COMBINED SEWER
○ EX. CATCH BASIN	—~— EX. DITCH	—/— LINEAR REMOVAL
⊙ EX. MANHOLE	—UNK— UNKNOWN TYPE	S*X STRUCTURE TO BE REMOVED (ALL REMOVALS THIS SHEET ARE PAID FOR AS UTILITY STRUCTURE REMOVAL OR FIRE HYDRANTS TO BE REMOVED, SEE SCHEDULE)
⊠ EX. HANDHOLE	—G— EX. GAS MAIN	*X EXISTING PIPE I.D.*
—W— EX. STORM SEWER	—W— EX. WATER MAIN	

FILE NAME = USER NAME = #USER# DESIGNED - JB REVISED - DRAWN - JB REVISED - CHECKED - ACL REVISED - DATE - 02/04/11 REVISED -
 TENG & ASSOCIATES, INC. ENGINEERS/ARCHITECTS/PLANNERS CHICAGO, ILLINOIS
 5-04-2011 12:57:23

STATE OF ILLINOIS
DEPARTMENT OF TRANSPORTATION
 I-70 CONNECTION

PROPOSED I-70 EXISTING DRAINAGE & UTILITIES STA. 148+00 TO STA. 162+00		F.A.P. RTE. 998	SECTION 82-1A	COUNTY ST. CLAIR	TOTAL SHEETS 190	SHEET NO. 74
SCALE: 1"=50'	SHEET NO. OF SHEETS STA. TO STA.	CONTRACT NO. 76C41				