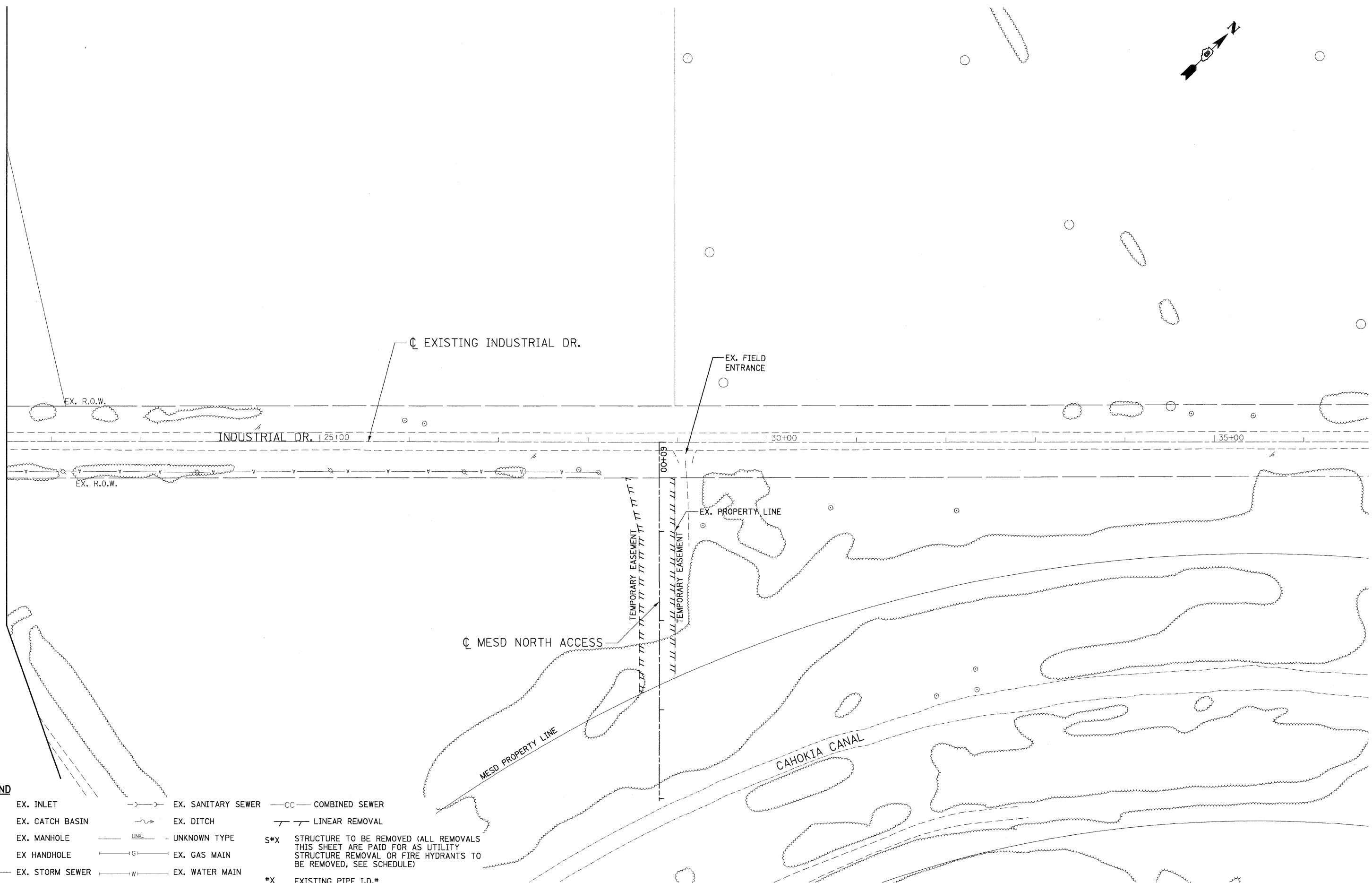


MATCH LINE STA. 21+50  
SEE SHEET 73



|  |                 |  |                    |  |                     |
|--|-----------------|--|--------------------|--|---------------------|
|  | EX. INLET       |  | EX. SANITARY SEWER |  | COMBINED SEWER      |
|  | EX. CATCH BASIN |  | EX. DITCH          |  | LINEAR REMOVAL      |
|  | EX. MANHOLE     |  | UNKNOWN TYPE       |  | S#X                 |
|  | EX. HANDHOLE    |  | EX. GAS MAIN       |  | EX. WATER MAIN      |
|  | EX. STORM SEWER |  | EX. WATER MAIN     |  | EXISTING PIPE I.D.* |

S#X STRUCTURE TO BE REMOVED (ALL REMOVALS THIS SHEET ARE PAID FOR AS UTILITY STRUCTURE REMOVAL OR FIRE HYDRANTS TO BE REMOVED, SEE SCHEDULE)

\*X EXISTING PIPE I.D.\*

**STATE OF ILLINOIS**  
**DEPARTMENT OF TRANSPORTATION**  
I-70 CONNECTION

**PROPOSED MESD NORTH ACCESS**  
**EXISTING DRAINAGE & UTILITIES**  
**STA. 60+00 TO STA. 64+00**

FILE NAME =  
#FILE#

USER NAME = #USER#  
DESIGNED - JB  
DRAWN - JB  
CHECKED - ACL  
DATE - 02/04/11

REVISED -  
REVISED -  
REVISED -  
REVISED -

PLLOT SCALE = #SCALE#  
PLOT DATE = #DATE#

SCALE: 1"=50'  
SHEET NO. OF SHEETS STA. TO STA.

|   |                  |                     |                     |                 |
|---|------------------|---------------------|---------------------|-----------------|
| F.A.P. RTE.<br>998                              | SECTION<br>82-1A | COUNTY<br>ST. CLAIR | TOTAL SHEETS<br>190 | SHEET NO.<br>78 |
| CONTRACT NO. 76C41                              |                  |                     |                     |                 |
| FED. ROAD DIST. NO. [ILLINOIS] FED. AID PROJECT |                  |                     |                     |                 |

.:\BDC\99-MOTIF.LDN, .:\BDC\99-BORDER.LDN, .:\BDC\99-MOTIF.LDN, .:\BDC\99-LEGEND.LDN, .:\BDC\99-MOTIF.LDN  
 .:\BDC\99-MOTIF.LDN, .:\BDC\99-BORDER.LDN, .:\BDC\99-MOTIF.LDN, .:\BDC\99-LEGEND.LDN, .:\BDC\99-MOTIF.LDN  
 .:\BDC\99-MOTIF.LDN, .:\BDC\99-BORDER.LDN, .:\BDC\99-MOTIF.LDN, .:\BDC\99-LEGEND.LDN, .:\BDC\99-MOTIF.LDN

