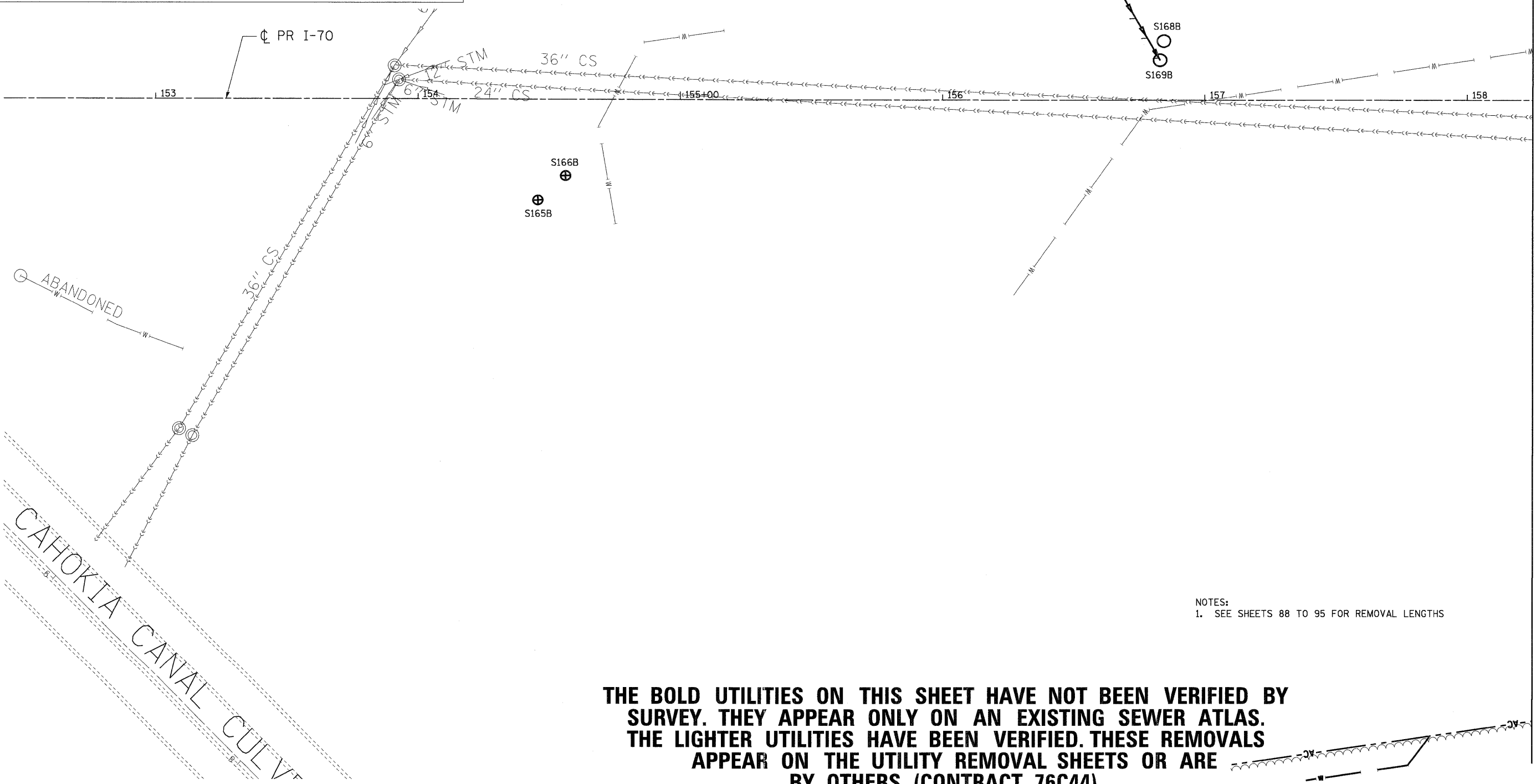
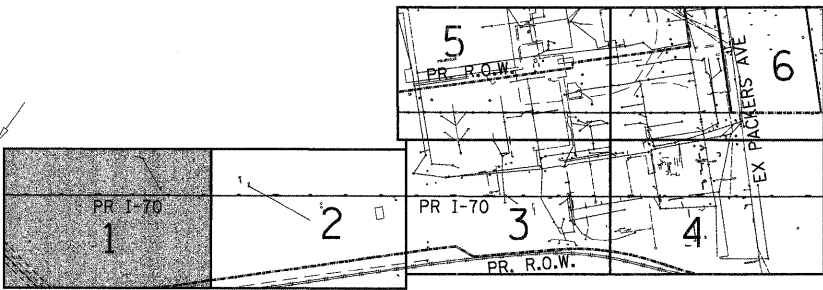


FILE NAME = \\S:\2014\KANSAS\T.D-TRANS\07A2222\20868\001\CIVIL\CAD\99\ALL CONTRACTS\CONNS\SHEETS\CONTRACT 06\06CON-06-SHT-DRNUTL 4-15250.DGN
 USER = JB
 DATE = 02/04/11
 SCALE = 1"=20'
 SHEET NO. OF SHEETS STA. TO STA.
 F.A.P. RTE. 998 SECTION 82-1A COUNTY ST. CLAIR TOTAL SHEETS 190 SHEET NO. 79 CONTRACT NO. 76C41
 FED. ROAD DIST. NO. ILLINOIS FED. AID PROJECT
 STATE OF ILLINOIS DEPARTMENT OF TRANSPORTATION I-70 CONNECTION
 EXISTING SEWER ATLAS 1
 SCALE: 1"=20' SHEET NO. OF SHEETS STA. TO STA.

LEGEND

- EX. INLET
- EX. CATCH BASIN
- EX. MANHOLE
- ⊕ EX. FIRE HYDRANT
- ⊗ VALVE
- ⊙ INDICATOR POST
- ⊕ GATE VALVE (MANHOLE)
- STEAMER PLUG
- ⊕ GATE VALVE (SLEEVE)
- FIRE PLUG
- EX. STORM SEWER
- - - EX. SANITARY SEWER
- - - EX. COMBINED SEWER
- EX. WATER
- PIPE REMOVAL
- S*B STRUCTURE TO BE REMOVED (REMOVALS THIS SHEET ARE PAID FOR AS UTILITY STRUCTURE REMOVAL OR FIRE HYDRANTS TO BE REMOVED, SEE SCHEDULE)
- *B EXISTING PIPE I.D.*

KEY MAP



NOTES:
 1. SEE SHEETS 88 TO 95 FOR REMOVAL LENGTHS

THE BOLD UTILITIES ON THIS SHEET HAVE NOT BEEN VERIFIED BY SURVEY. THEY APPEAR ONLY ON AN EXISTING SEWER ATLAS. THE LIGHTER UTILITIES HAVE BEEN VERIFIED. THESE REMOVALS APPEAR ON THE UTILITY REMOVAL SHEETS OR ARE BY OTHERS (CONTRACT 76C44).

MATCH LINE STA 158+25
 SEE SHEET 80

FILE NAME =	USER NAME = #USER#	DESIGNED - JB	REVISED -	STATE OF ILLINOIS DEPARTMENT OF TRANSPORTATION I-70 CONNECTION	PROPOSED I-70 EXISTING SEWER ATLAS 1	F.A.P. RTE. 998	SECTION 82-1A	COUNTY ST. CLAIR	TOTAL SHEETS 190	SHEET NO. 79	
#FILEL#		DRAWN - JB	REVISED -								
	PLOT SCALE = #SCALE#	CHECKED - ACL	REVISED -								
	PLOT DATE = #DATE#	DATE - 02/04/11	REVISED -								
TENG & ASSOCIATES, INC. ENGINEERS/ARCHITECTS/PLANNERS CHICAGO, ILLINOIS					SCALE: 1"=20'		SHEET NO. OF SHEETS STA. TO STA.		CONTRACT NO. 76C41 ILLINOIS FED. AID PROJECT		