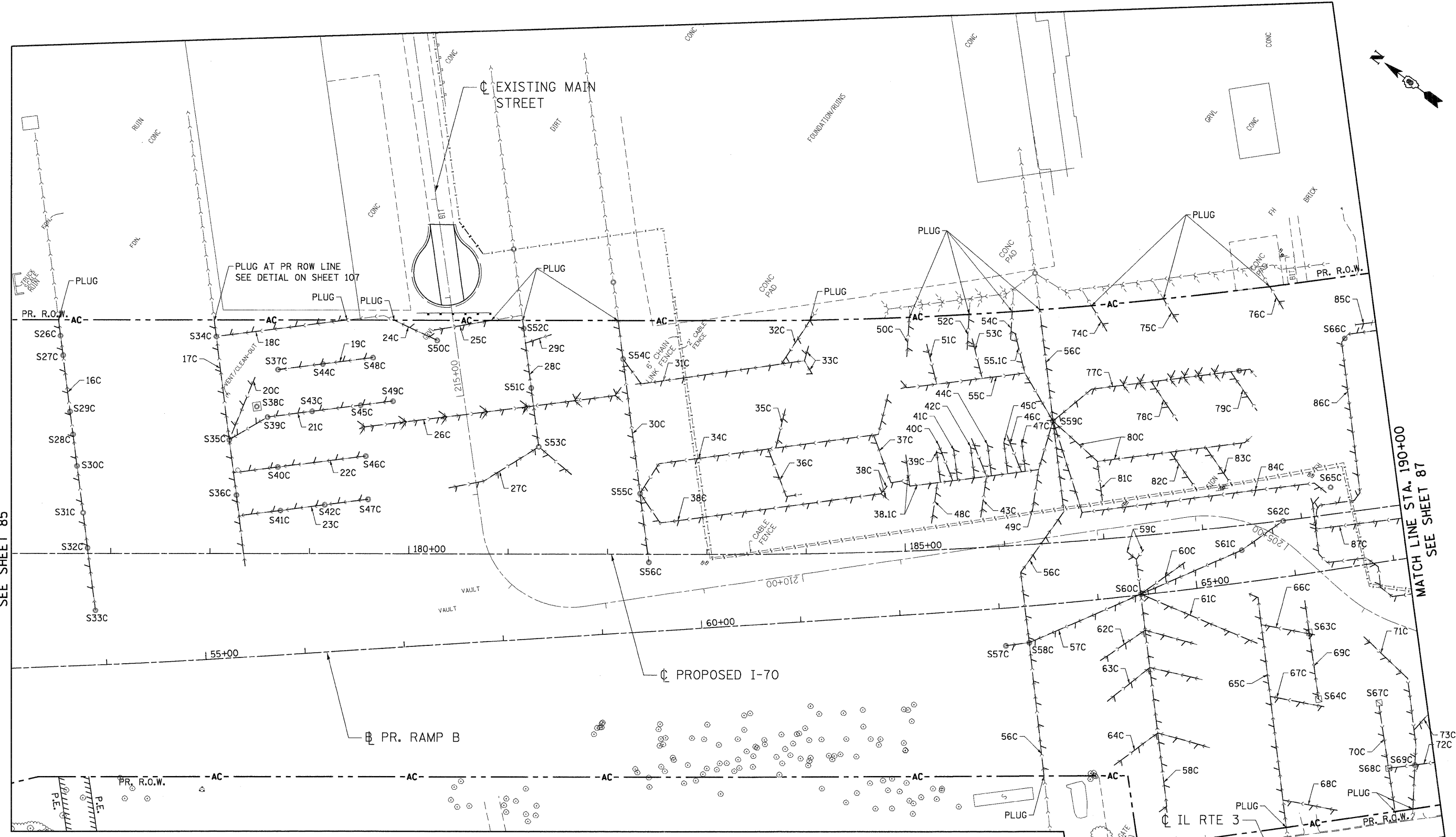


\D:\CONTR-99-MOTIF.LDGN, \D:\CONTR-96-LEGEND.LDGN, \D:\CONTR-86-MOTIF.LDGN, \D:\CONTR-83-GEOMETRICS.LDGN, \D:\CONTR-80-LEGEND.LDGN, \D:\CONTR-78-LEGEND.LDGN, \D:\CONTR-75-LEGEND.LDGN, \D:\CONTR-72-LEGEND.LDGN, \D:\CONTR-69-LEGEND.LDGN, \D:\CONTR-66-LEGEND.LDGN, \D:\CONTR-63-LEGEND.LDGN, \D:\CONTR-60-LEGEND.LDGN, \D:\CONTR-57-LEGEND.LDGN, \D:\CONTR-54-LEGEND.LDGN, \D:\CONTR-51-LEGEND.LDGN, \D:\CONTR-48-LEGEND.LDGN, \D:\CONTR-45-LEGEND.LDGN, \D:\CONTR-42-LEGEND.LDGN, \D:\CONTR-39-LEGEND.LDGN, \D:\CONTR-36-LEGEND.LDGN, \D:\CONTR-33-LEGEND.LDGN, \D:\CONTR-30-LEGEND.LDGN, \D:\CONTR-27-LEGEND.LDGN, \D:\CONTR-24-LEGEND.LDGN, \D:\CONTR-21-LEGEND.LDGN, \D:\CONTR-18-LEGEND.LDGN, \D:\CONTR-15-LEGEND.LDGN, \D:\CONTR-12-LEGEND.LDGN, \D:\CONTR-9-LEGEND.LDGN, \D:\CONTR-6-LEGEND.LDGN, \D:\CONTR-3-LEGEND.LDGN



MATCH LINE STA. 176+00  
 SEE SHEET 85

MATCH LINE STA. 190+00  
 SEE SHEET 87

LEGEND	
	EX. INLET
	EX. CATCH BASIN
	EX. MANHOLE
	EX. HANDHOLE
	EX. STORM SEWER
	EX. SANITARY SEWER
	EX. DITCH
	EX. UNKNOWN TYPE
	EX. GAS MAIN
	EX. WATER MAIN
	COMBINED SEWER
	LINEAR REMOVAL
S#X	STRUCTURE TO BE REMOVED (ALL REMOVALS THIS SHEET ARE PAID FOR AS UTILITY STRUCTURE REMOVAL OR FIRE HYDRANTS TO BE REMOVED, SEE SCHEDULE)
*X	EXISTING PIPE I.D.*

NOTES:  
 1. SEE SHEETS 88 TO 95 FOR REMOVAL LENGTHS

<b>TENG</b> TENG & ASSOCIATES, INC. ENGINEERS/ARCHITECTS/PLANNERS CHICAGO, ILLINOIS	USER NAME = #USER# DESIGNED - JB DRAWN - JB CHECKED - ACL DATE - 02/04/11	REVISED - REVISED - REVISED - REVISED -	<b>STATE OF ILLINOIS</b> <b>DEPARTMENT OF TRANSPORTATION</b> I-70 CONNECTION	<b>PROPOSED I-70</b> <b>EXISTING SEWER ATLAS 8</b>	F.A.P. RTE. 998 SECTION 82-1A COUNTY ST. CLAIR TOTAL SHEETS 190 SHEET NO. 86	CONTRACT NO. 76C41 ILLINOIS FED. AID PROJECT
	FILE NAME = #FILE# PLOT SCALE = #SCALE# PLOT DATE = #DATE#			SCALE: 1"=50' SHEET NO. OF SHEETS STA. TO STA.	FED. ROAD DIST. NO. ILLINOIS FED. AID PROJECT	