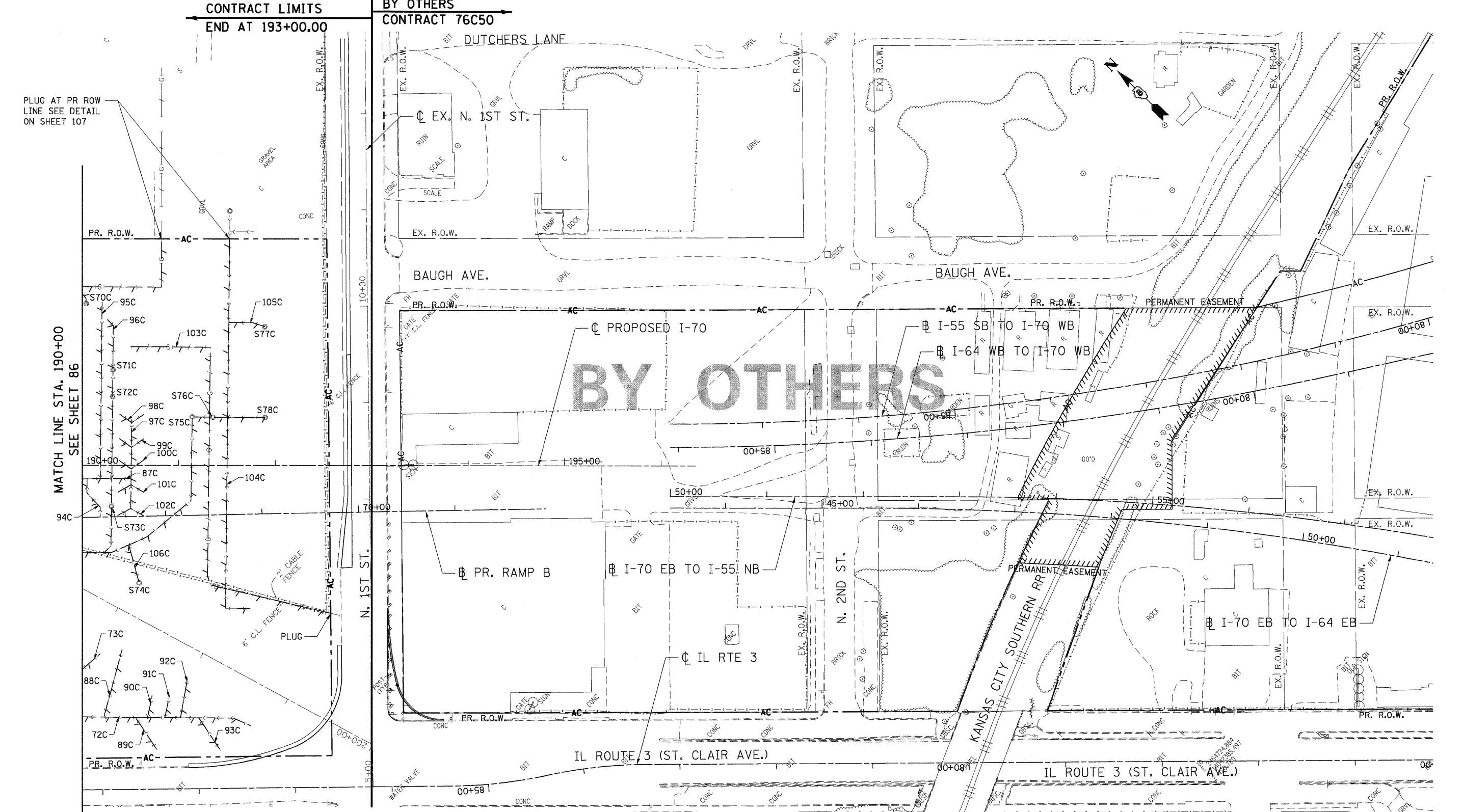


FILE NAME = USER NAME = @USER# DESIGNED - JB REVISED -  
 #FILE# DRAWN - JB REVISED -  
 PLOT SCALE = #SCALE# CHECKED - ACL REVISED -  
 PLOT DATE = #DATE# DATE - 02/04/11 REVISED -



**LEGEND**

□	EX. INLET	—○—	EX. SANITARY SEWER	—CC—	COMBINED SEWER
○	EX. CATCH BASIN	—○—	EX. DITCH	—/—	LINEAR REMOVAL
⊙	EX. MANHOLE	—UNK—	UNKNOWN TYPE	S*X	STRUCTURE TO BE REMOVED (ALL REMOVALS THIS SHEET ARE PAID FOR AS UTILITY STRUCTURE REMOVAL OR FIRE HYDRANTS TO BE REMOVED, SEE SCHEDULE)
⊠	EX. HANDHOLE	—G—	EX. GAS MAIN	*X	EXISTING PIPE I.D.*
—W—	EX. STORM SEWER	—W—	EX. WATER MAIN		

**NOTE:**  
1. SEE SHEETS 88 TO 95 FOR REMOVAL LENGTHS

<b>TENG</b> TENG & ASSOCIATES, INC. ENGINEERS/ARCHITECTS/PLANNERS CHICAGO, ILLINOIS	FILE NAME = #FILE#	USER NAME = @USER#	DESIGNED - JB	REVISED -	<b>STATE OF ILLINOIS</b> <b>DEPARTMENT OF TRANSPORTATION</b> I-70 CONNECTION	<b>PROPOSED I-70</b> <b>EXISTING SEWER ATLAS 9</b>	F.A.P. RTE. 998	SECTION 82-1A	COUNTY ST. CLAIR	TOTAL SHEETS 190	SHEET NO. 87
	SCALE: 1"=50'	SHEET NO. OF SHEETS	STA. TO STA.	CONTRACT NO. 76C41			ILLINOIS FED. AID PROJECT				