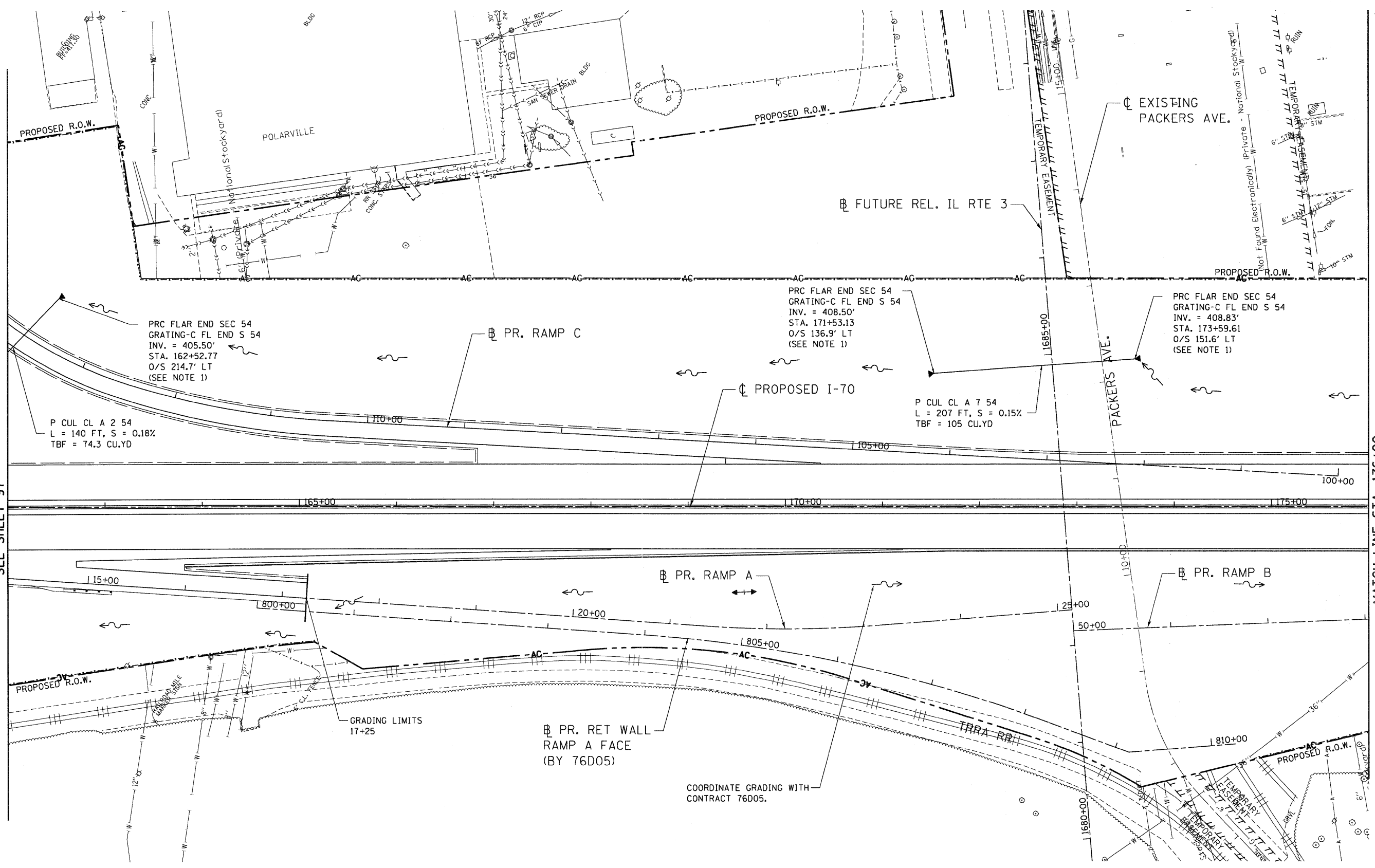


\D:\CONNS\96-MOTIF.LDGN, \D:\CONNS\96-LAYOUT.LDGN, \D:\CONNS\96-LEGEND.LDGN, \D:\CONNS\96-MOTIF.LDGN, \D:\CONNS\96-MOTIF.LDGN, \D:\CONNS\96-MOTIF.LDGN, \D:\CONNS\96-SHT-PLAN1-16290.LDGN
 \D:\CONNS\96-MOTIF.LDGN, \D:\CONNS\96-LAYOUT.LDGN, \D:\CONNS\96-LEGEND.LDGN, \D:\CONNS\96-MOTIF.LDGN, \D:\CONNS\96-MOTIF.LDGN, \D:\CONNS\96-MOTIF.LDGN, \D:\CONNS\96-SHT-PLAN1-16290.LDGN
 2-04-2011 16:18:52

MATCH LINE STA. 162+00
SEE SHEET 97

MATCH LINE STA. 176+00
SEE SHEET 99



PRC FLAR END SEC 54
 GRATING-C FL END S 54
 INV. = 405.50'
 STA. 162+52.77
 O/S 214.7' LT
 (SEE NOTE 1)

PRC FLAR END SEC 54
 GRATING-C FL END S 54
 INV. = 408.50'
 STA. 171+53.13
 O/S 136.9' LT
 (SEE NOTE 1)

PRC FLAR END SEC 54
 GRATING-C FL END S 54
 INV. = 408.83'
 STA. 173+59.61
 O/S 151.6' LT
 (SEE NOTE 1)

P CUL CL A 2 54
 L = 140 FT, S = 0.18%
 TBF = 74.3 CU.YD

P CUL CL A 7 54
 L = 207 FT, S = 0.15%
 TBF = 105 CU.YD

PROPOSED R.O.W.

GRADING LIMITS
17+25

PR. RET WALL
 RAMP A FACE
 (BY 76D05)

COORDINATE GRADING WITH
 CONTRACT 76D05.

LEGEND	
□	EX. INLET
○	EX. CATCH BASIN
●	EX. MANHOLE
⊙	EX. STORM SEWER
—○—	EX. SANITARY SEWER
—●—	EX. COMBINED SEWER
●	PROPOSED MANHOLE
▶	PROPOSED CULVERT END SECTION
—+—	PROPOSED SWALE
—▲—	PROPOSED SUMMIT
—~—	PROPOSED DITCH

NOTES:
 1.0 SEE SHEET 107 FOR END SECTION CALLOUT DETAIL.
 2.0 STATION, OFFSET, AND RIM ELEVATION FOR DRAINAGE STRUCTURES ARE TAKEN FROM THE CENTER OF THE STRUCTURE

FILE NAME =	USER NAME = #USER#	DESIGNED - JB	REVISED -	STATE OF ILLINOIS DEPARTMENT OF TRANSPORTATION I-70 CONNECTION	PROPOSED I-70 PROPOSED DRAINAGE & UTILITIES STA. 162+00 TO STA. 176+00			F.A.P. RTE. 998	SECTION 82-1A	COUNTY ST. CLAIR	TOTAL SHEETS 190	SHEET NO. 98
#FILEL#	PLOT SCALE = #SCALE#	DRAWN - JB	REVISED -		SCALE: 1"=50'	SHEET NO. OF	SHEETS STA.	TO STA.	FED. ROAD DIST. NO.	ILLINOIS FED. AID PROJECT	CONTRACT NO. 76C41	
TENG	TENG & ASSOCIATES, INC. ENGINEERS/ARCHITECTS/PLANNERS CHICAGO, ILLINOIS	CHECKED - ACL	REVISED -									
	PLOT DATE = #DATE#	DATE - 02/04/11	REVISED -									