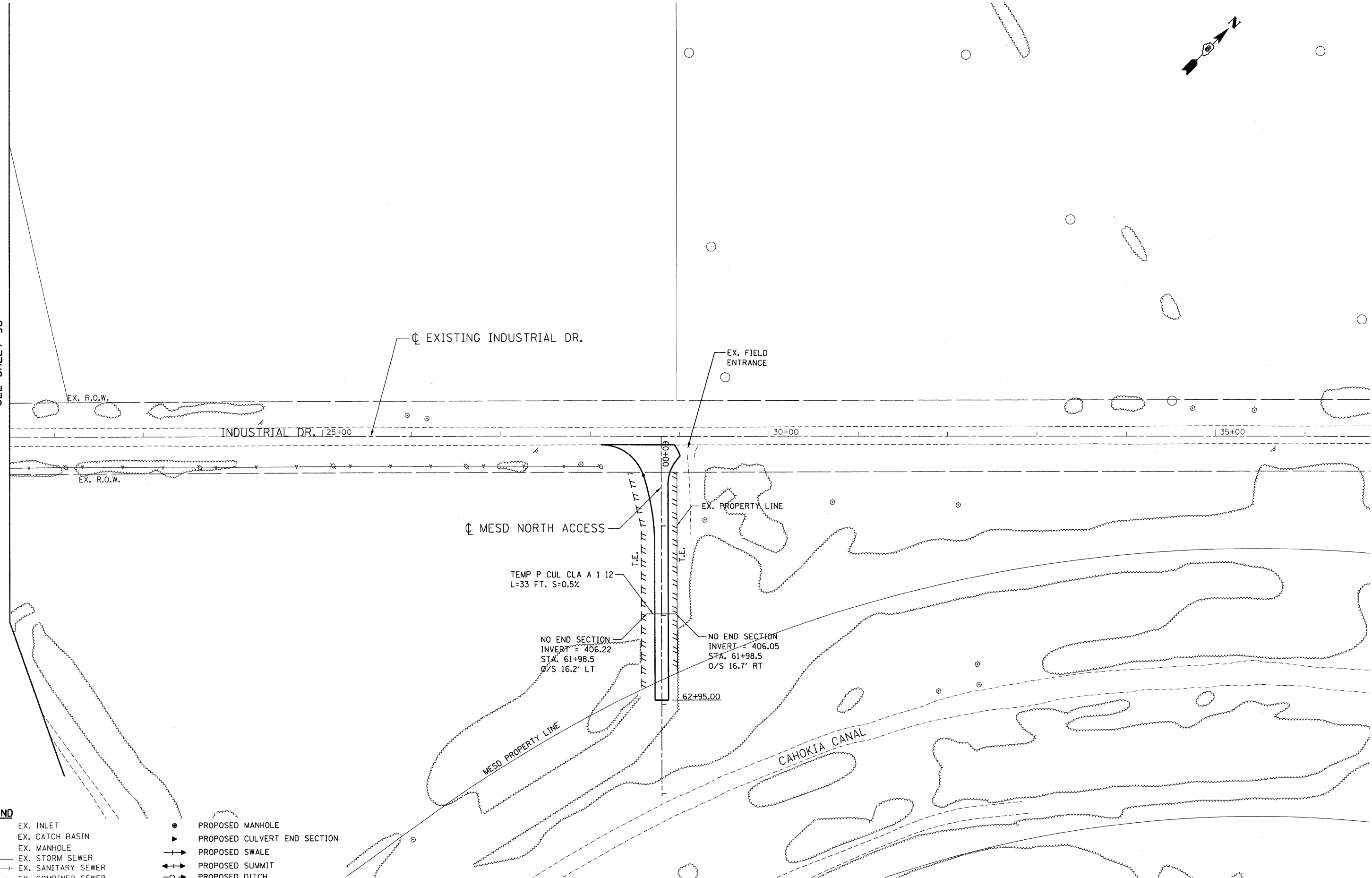


MATCH LINE STA. 21+50
SEE SHEET 96



LEGEND	
○	EX. INLET
○	EX. CATCH BASIN
⊙	EX. MANHOLE
—	EX. STORM SEWER
—	EX. SANITARY SEWER
—	EX. COMBINED SEWER
●	PROPOSED MANHOLE
▶	PROPOSED CULVERT END SECTION
—	PROPOSED SWALE
—	PROPOSED SUMMIT
—	PROPOSED DITCH

\D:\DCONN-96-MOTIFL.DGN, \D:\DCONN-96-BORDERL.DGN, \D:\DCONN-96-LEGENDL.DGN, \D:\DCONN-96-MOTIFL.DGN, \D:\DCONN-96-MOTIFL.DGN
 2-04-2011 16:19:47 BONDHJLD \FS-004\VAULT.D-TRANS.07-2202-20868-00\CIVIL\CAD\99 ALL CONTRACTS\CONNSHEETS CONTRACT 06\DCONN-06-SHT-DRNUTL2-2150.DGN

FILE NAME =	USER NAME = #USER#	DESIGNED - JB	REVISED -	STATE OF ILLINOIS DEPARTMENT OF TRANSPORTATION I-70 CONNECTION	PROPOSED MESD NORTH ACCESS PROPOSED DRAINAGE & UTILITIES STA. 60+00 TO STA. 64+00	F.A.P. RTE. =	SECTION	COUNTY	TOTAL SHEETS	SHEET NO.	
*FILEL#	PLOT SCALE = #SCALE#	DRAWN - JB	REVISED -			998	82-1A	ST. CLAIR	190	101	
TENG & ASSOCIATES, INC. ENGINEERS/ARCHITECTS/PLANNERS CHICAGO, ILLINOIS	PLOT DATE = #DATE#	CHECKED - ACL	REVISED -			SCALE: 1"=50'		SHEET NO. OF SHEETS STA. TO STA.		CONTRACT NO. 76C41	
		DATE - 02/04/11	REVISED -			FED. ROAD DIST. NO.		ILLINOIS FED. AID PROJECT			