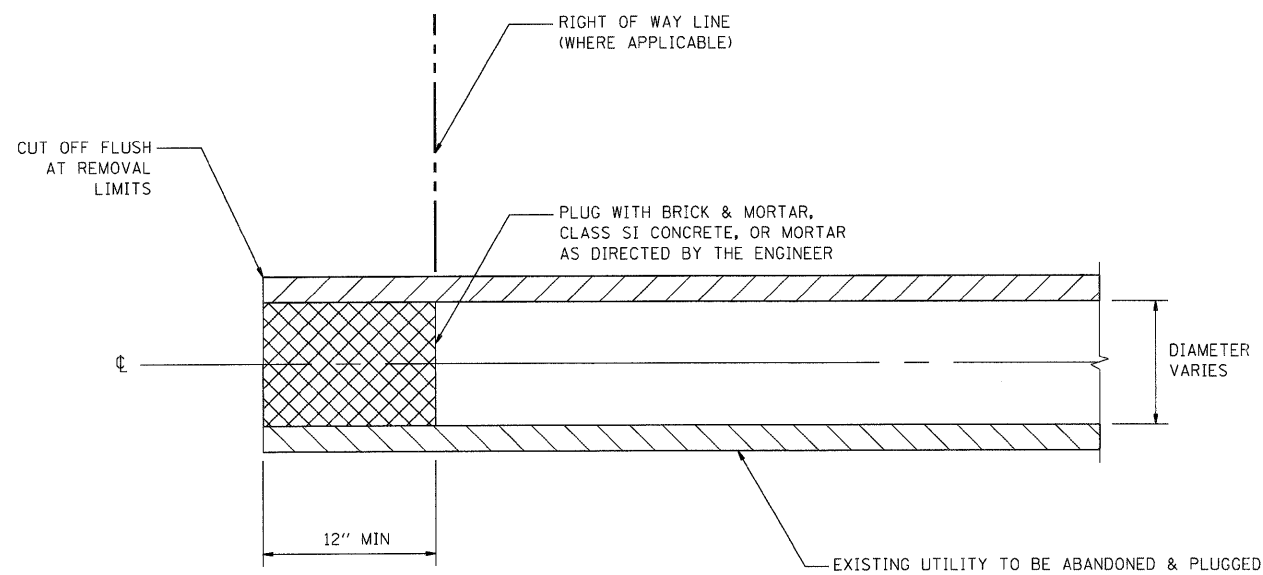
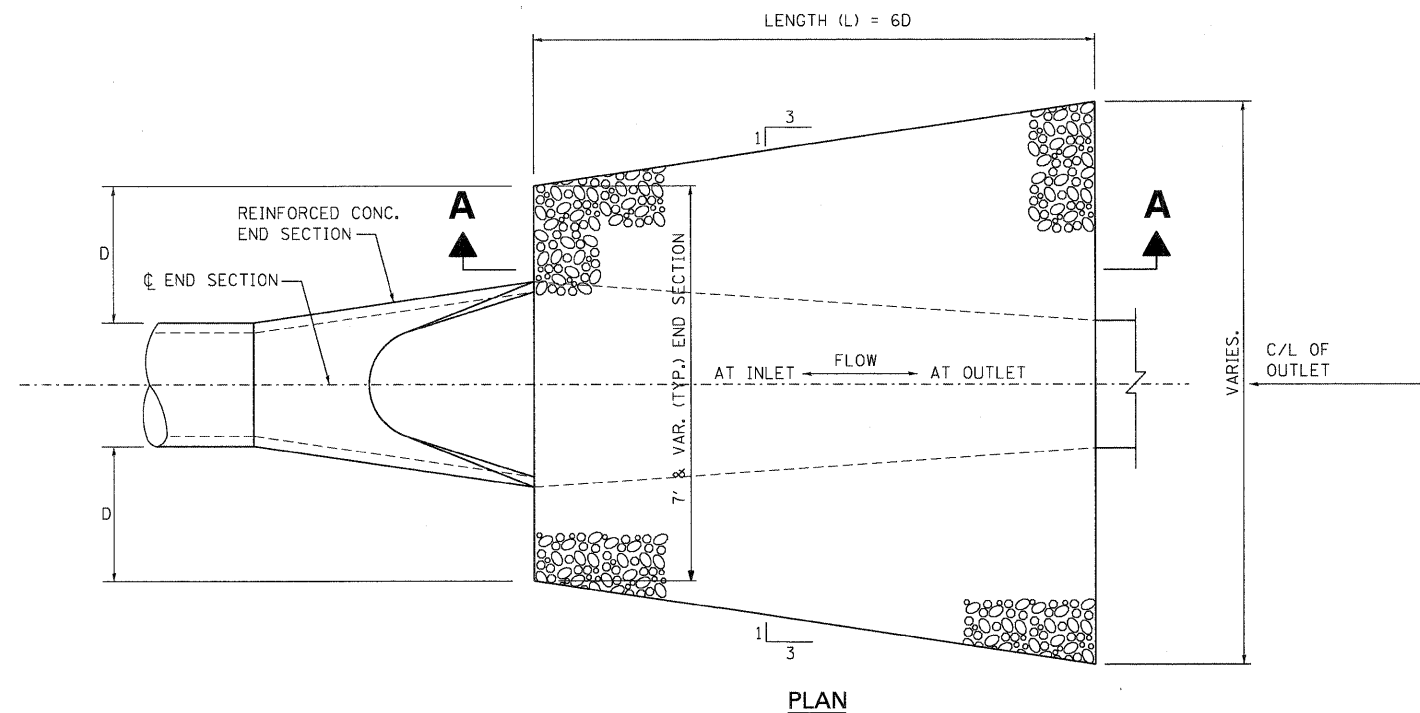


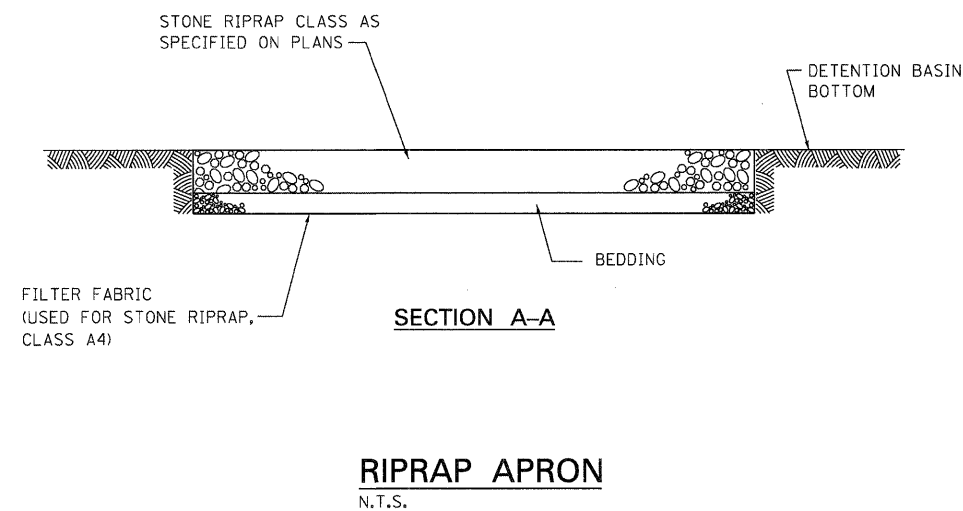
NOTE:
ALL PIPE STATIONS, OFFSETS, AND INVERTS ARE MEASURED FROM WHERE THE PIPE MEETS THE END SECTION

END SECTION CALL OUT DETAIL



NOTE:
1. THIS WORK SHALL BE CONSIDERED AS INCLUDED IN THE CONTRACT UNIT PRICE BID FOR THE UTILITY REMOVAL ITEMS.

UTILITY PLUG



NOTES:
1. APRON WIDTH SHALL BE ADJUSTED TO MATCH CULVERT END SECTION WIDTH.

I:\06CONN-06-RRR\06-RRR\06-RRR\06-RRR\CAD\99 ALL CONTRACTS\CONNSHEETS CONTRACT 06\06CONN-06-SHT-DRAINAGE4.DGN
 BONDHUJOD \\FS-0044\BONDHUJOD\TJ-TRANS-07\2202\20868-00\1\CIVIL\CAD\99

FILE NAME =	USER NAME = #USER#	DESIGNED - MFM	REVISED -
#FILEL#		DRAWN - MFM	REVISED -
	PLOT SCALE = #SCALE#	CHECKED - TKL	REVISED -
	PLOT DATE = #DATE#	DATE - 02/04/11	REVISED -

STATE OF ILLINOIS
DEPARTMENT OF TRANSPORTATION
 I-70 CONNECTION

DRAINAGE DETAILS			
END SECTION, SEWER PLUG & RIPRAP APRON			
SCALE: N.T.S.	SHEET NO.	OF SHEETS	STA. TO STA.

F.A.P. RTE.	SECTION N/A	COUNTY	TOTAL SHEETS	SHEET NO.
998	82-1A	ST. CLAIR	190	107
CONTRACT NO. 76C41				
FED. ROAD DIST. NO. ILLINOIS FED. AID PROJECT				

