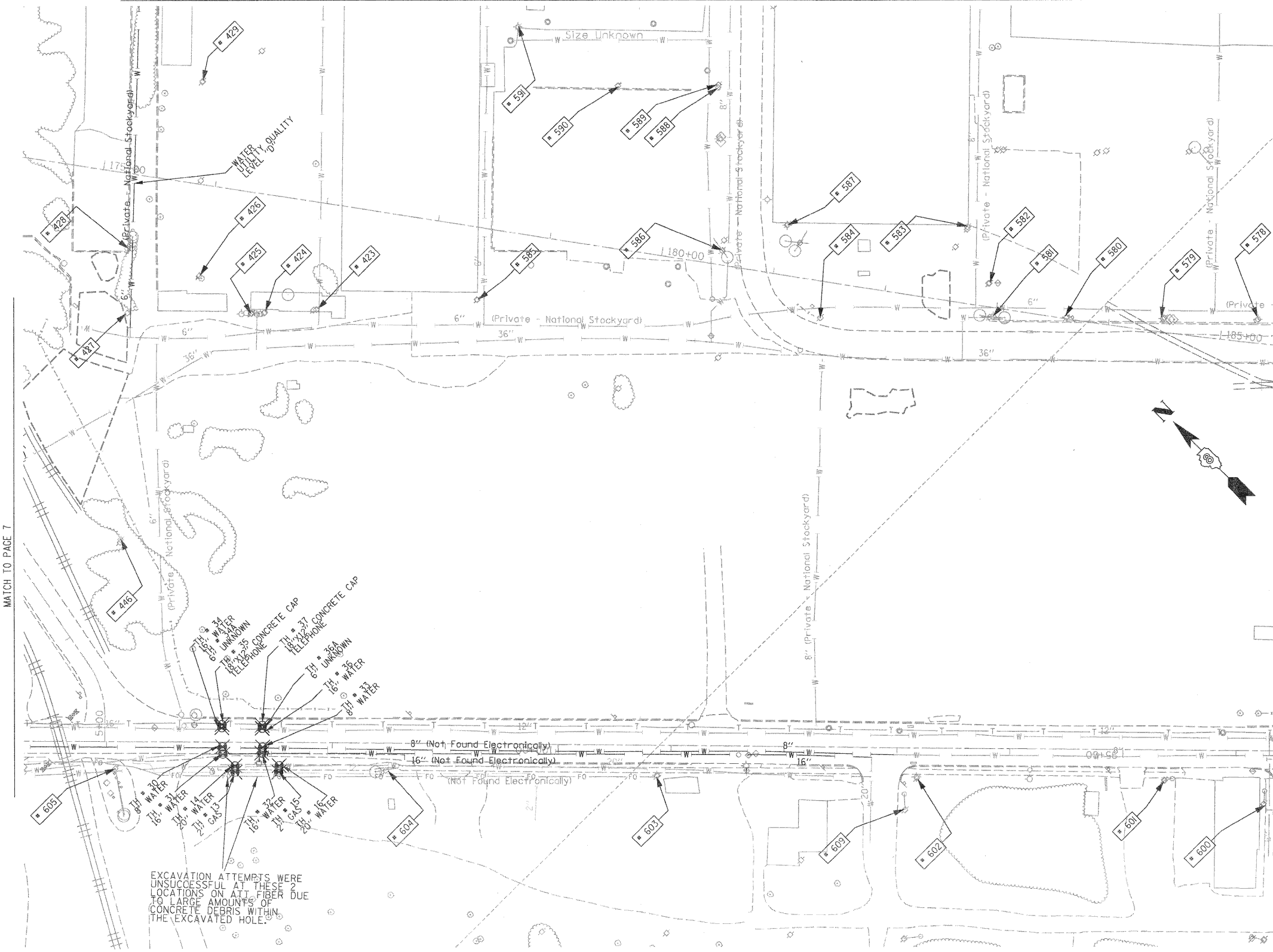


MATCH TO PAGE 12



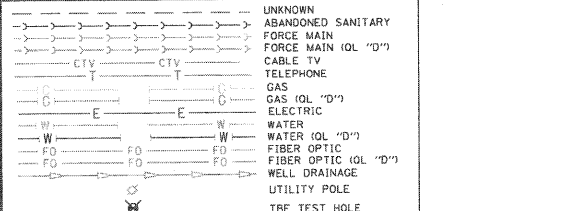
MATCH TO PAGE 7

MATCH TO PAGE 13

MATCH TO PAGE 9

TBE Pole Number	Approximate Location	Identification # on Pole	Utilities Attached to Poles	Utility Owners	Notes: Additional Items Attached to Poles
423	45' N OF CL FRONT/MAIN ST W	739111	ELECTRIC	AMEREN ELECTRIC	LIGHT
424	45' N OF CL FRONT/MAIN ST W	NO TAG	TRANSFORMERS		TRANSFORMERS
425	45' N OF CL FRONT/MAIN ST W	NO TAG	TRANSFORMERS		TRANSFORMERS
426	45' N OF CL FRONT/MAIN ST W	NO TAG	ELECTRIC	AMEREN ELECTRIC	ELECTRIC SERVICES CUT OFF
427	45' N OF CL FRONT/MAIN ST W	739108	ELECTRIC	AMEREN ELECTRIC	
428	N OF POLE 427	NO TAG	LIGHT POLE		LIGHT - GUY N
429	NE OF POLE 426	NO TAG	NO UTILITIES		
446	SW OF POLE 445	739446	ELECTRIC	AMEREN ELECTRIC	TRANSFORMER #8946
578	866' N OF FRONT ST & 1ST ST. CL ON E/S OF FRONT	739133	ELECTRIC, TELEPHONE	AT&T, AMEREN ELECTRIC	
579	949' N OF FRONT ST & 1ST ST. CL ON E/S OF FRONT	739132	ELECTRIC, TELEPHONE	AT&T, AMEREN ELECTRIC	LIGHT
580	1036' N OF FRONT ST & 1ST ST. CL ON E/S OF FRONT	739131	ELECTRIC, TELEPHONE	AT&T, AMEREN ELECTRIC	
581	1104' N OF FRONT ST & 1ST ST. CL ON E/S OF FRONT	739129	ELECTRIC, TELEPHONE	AT&T, AMEREN ELECTRIC	LIGHT & TRANSFORMER
582	1105' N OF FRONT ST & 1ST ST. CL ON E/S OF FRONT	NO TAG	ELECTRIC, TELEPHONE	AT&T, AMEREN ELECTRIC	ELECTRIC METER
583	1127' N OF FRONT ST & 1ST ST. CL ON E/S OF FRONT	739130	NO UTILITIES		
584	1259' N OF FRONT ST & 1ST ST. CL ON E/S OF FRONT	739128	ELECTRIC	AMEREN ELECTRIC	LIGHT
585	45' N OF CL FRONT/MAIN ST W	739146	ELECTRIC	AMEREN ELECTRIC	LIGHT
586	84' N OF MAIN & FRONT ST CL ON W/S OF MAIN ST	739145	ELECTRIC	AMEREN ELECTRIC	LIGHT
587	104' N OF MAIN & FRONT ST CL ON W/S OF MAIN ST	739144	NO UTILITIES		
588	228' N OF MAIN & FRONT ST CL ON W/S OF MAIN ST	NO TAG	TELEPHONE	AT&T	TELEPHONE CUT
589	230' N OF MAIN & FRONT ST CL ON W/S OF MAIN ST	739126	ELECTRIC	AMEREN ELECTRIC	LIGHT
590	232' N OF MAIN & FRONT ST CL ON W/S OF MAIN ST	739125	ELECTRIC	AMEREN ELECTRIC	
591	278' N OF MAIN & FRONT ST CL ON W/S OF MAIN ST	739124	TELEPHONE	AT&T	TELEPHONE CUT
600	753' W OF 1ST ST CL ON S/S OF ST. CLAIR	723699	ELECTRIC	AMEREN ELECTRIC	GUY NE
601	842' W OF 1ST ST CL ON S/S OF ST. CLAIR	19036	ELECTRIC, FIBER	AMEREN ELECTRIC	
602	1059' W OF 1ST ST. CL ON S/S OF ST. CLAIR	19037	ELECTRIC, FIBER	AMEREN ELECTRIC	
603	1289' W OF 1ST ST. CL ON S/S OF ST. CLAIR	19038	ELECTRIC, FIBER	AMEREN ELECTRIC	GUY NW
604	1530' W OF 1ST ST. CL ON S/S OF ST. CLAIR	19039	ELECTRIC	AMEREN ELECTRIC	LIGHT
605	1770' W OF 1ST ST. CL ON S/S OF ST. CLAIR	19040	ELECTRIC	AMEREN ELECTRIC	GUY SW
609	1066' W OF 1ST ST. CL ON S/S OF ST. CLAIR	726204	ELECTRIC	AMEREN ELECTRIC	GUY NE

EXCAVATION ATTEMPTS WERE UNSUCCESSFUL AT THESE 2 LOCATIONS ON ATT FIBER DUE TO LARGE AMOUNTS OF CONCRETE DEBRIS WITHIN THE EXCAVATED HOLE.



Utilities shown in color on these plans as depicted in the legend have been investigated by TBE Group, Inc in accordance with SUE Industry Standards. All other information shown has been provided to TBE Group, Inc by others. TBE's SUE field investigation was finished on 5/22/09. Changes to utilities after this date may have been made and therefore may result in variances from this plan. Consideration should be given to updating this plan if deemed advisable prior to final design and construction. All sheets are printed in black and white. Color copies are available upon request.

ALL UTILITIES SHOWN QUALITY LEVEL "B" UNLESS NOTED OTHERWISE.

Utility Quality Level "A" : Test Hole
 Utility Quality Level "B" : Designating
 Utility Quality Level "C" : Research with Survey
 Utility Quality Level "D" : Records Research

TBE GROUP, INC.
 CIVIL ENGINEERING • TRANSPORTATION • ENVIRONMENTAL
 PLANNING • UTILITY ENGINEERING/LOCATING

Checked By: _____
 Date: _____

TBE Job No. 110950601-602,603,604, 607,608,609

SUE Plan Page: 8 of 35

FILE NAME =	USER NAME =	DESIGNED <i>EG, IP, LP</i>	REVISED 7/28/09 - 8/26/09 TEST HOLES #60-108	STATE OF ILLINOIS DEPARTMENT OF TRANSPORTATION	Mississippi River Bridge Project
FILE#	PLOT SCALE = 1" = 50'	CHECKED <i>JB</i>	REVISED	SCALE:	SHEET NO. TO STA.
PLOT DATE = #DATE#	DATE 9/15/09	DATE	REVISED	FED. ROAD DIST. NO.	ILLINOIS Job No.: D-98-061-08

F.A. RTE.	SECTION	COUNTY	TOTAL SHEETS	SHEET NO.
		St. Clair	190	115
PTB NO. 147-038				