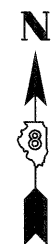


PART OF U.S. SURVEY 627, T2N, R10W, OF THE 3RD PM, ST. CLAIR COUNTY, ILLINOIS

SEE COORDINATE LIST AND BASIS OF COORDINATES AND BEARINGS STATEMENT ON SHEET 2

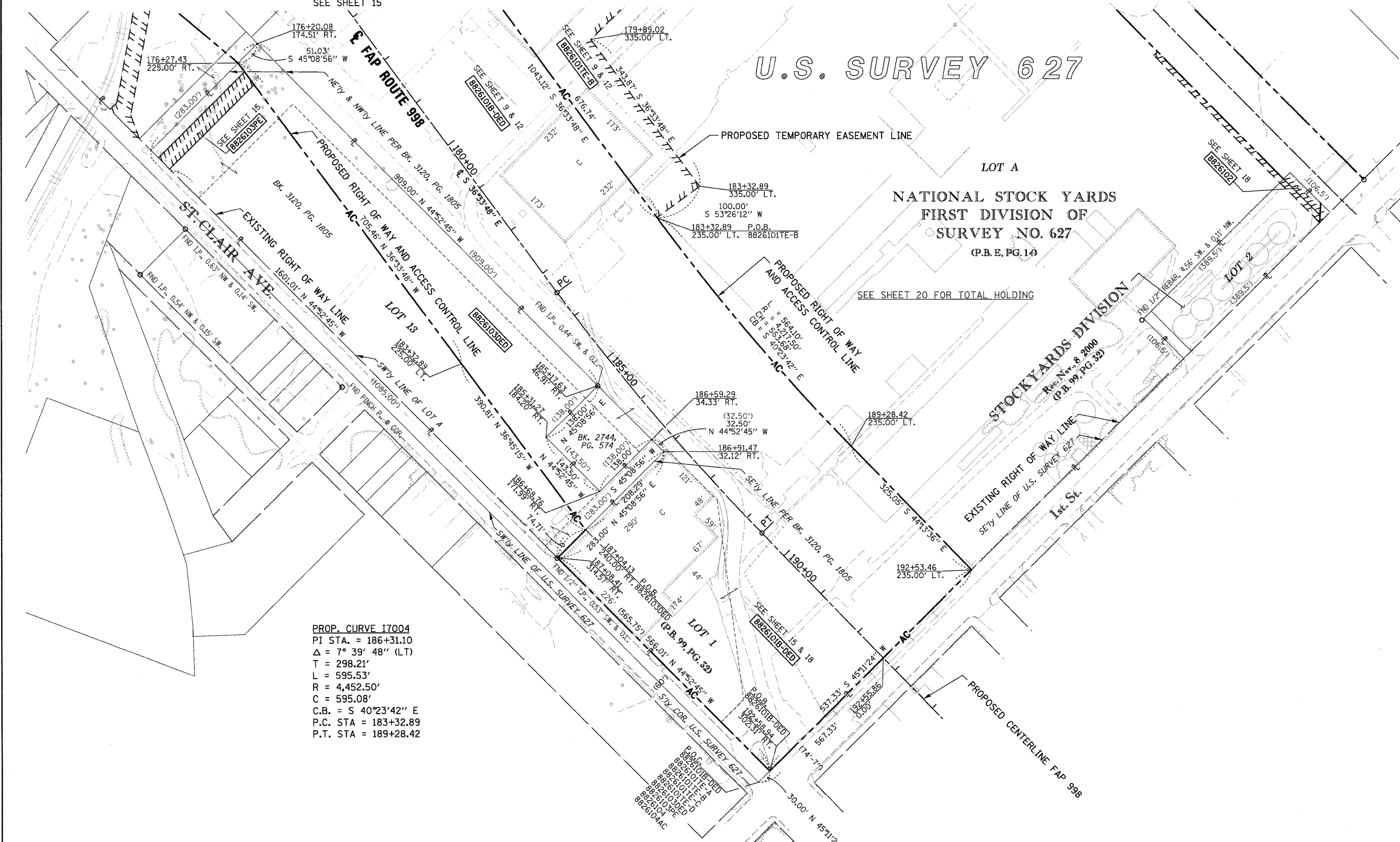
SEE SHEET 15

SEE SHEET 18



SPACE RESERVED FOR RECORDING OFFICER

BEARINGS SHOWN HEREON ARE BASED ON THE MISSISSIPPI RIVER CROSSING (MRC) COORDINATE SYSTEM WHICH IS A MODIFIED UNIVERSAL TRANSVERSE MERCATOR (UTM) SYSTEM, ZONE 15 NORTH.



PROP. CURVE I7004  
 PI STA. = 186+31.10  
 $\Delta = 7^\circ 39' 48''$  (LT)  
 T = 298.21'  
 L = 595.53'  
 R = 4,452.50'  
 C = 595.08'  
 C.B. = S 40°23'42" E  
 P.C. STA = 183+32.89  
 P.T. STA = 189+28.42

\* SEE TOTAL HOLDING AREA SOURCE TABLE ON SHEET 2

PARCEL NO.	OWNER	TOTAL HOLDING ACRES	AREA TO BE DEDICATED		REMAINDER ACRES	EASEMENTS		PERMANENT TAX NUMBER	PROPERTY ACQUIRED BY
			ACRES	SQ. FT.		ACRES	SQ. FT.		
88261030ED	NATIONAL CITY LAND COMPANY, LLC A NEVADA LIMITED LIABILITY CO. TITLE REPORT NO. SC-5594	6.5944	2.7855	121,337	6.5944	PE 0.1562	PE 6.806	DRAINAGE MAINTENANCE	01-12.0-202-002

STATE OF ILLINOIS )  
 ) SS  
 COUNTY OF )

I, COVENTINE FIDIS, AN ILLINOIS PROFESSIONAL LAND SURVEYOR, STATE THAT I HAVE SURVEYED THE PLAT OF HIGHWAY SHOWN HEREON AND THAT THIS PROFESSIONAL SERVICE CONFORMS TO THE CURRENT ILLINOIS MINIMUM STANDARDS FOR A BOUNDARY SURVEY FOR THE PROPOSED PARCEL(S) TO BE ACQUIRED BY THE STATE OF ILLINOIS, DEPARTMENT OF TRANSPORTATION, SHOWN HEREON.

DATED

COVENTINE FIDIS, PLS NO. 35-2159  
 LICENSE EXPIRATION DATE: 11/30/2010



NOTE:  
 EXISTING R.O.W. OF ST. CLAIR AVE. ESTABLISHED PER BK OF DEEDS Y-5, PG. 97 & PB H, PG. 34



ILLINOIS DEPARTMENT OF TRANSPORTATION  
**PLAT OF HIGHWAYS**  
 FAP ROUTE 998  
 SECTION 82-1K  
 ST. CLAIR COUNTY  
 JOB NO. R-98-026-08  
 STATION 178+00 TO STATION 193+00

SCALE: 1" = 100'

ILLINOIS DEPARTMENT OF TRANSPORTATION  
 DIVISION OF HIGHWAYS/REGION 5/DISTRICT 8  
 1102 EASTPORT PLAZA DRIVE  
 COLLINSVILLE, ILLINOIS 62234-6198

F.A. RTE.	SECTION	COUNTY	TOTAL SHEETS	SHEET NO.
			190	134

CONTRACT NO.

FED. ROAD DIST. NO. ILLINOIS FED. AID PROJECT