

BAR LIST

Bar	No.	Size	Length	Shape
a1	396	#8	43'-2"	
h4	1440	#5	3'-10"	—
h5	0	#5	4'-9"	—
h6	360	#5	5'-3"	—
h7	0	#5	5'-9"	—
h8	240	#5	6'-3"	—
h9	0	#5	6'-9"	—
h10	120	#5	7'-3"	—
h11	0	#5	7'-9"	—
h12	120	#5	8'-3"	—
h13	240	#5	8'-9"	—
h14	240	#5	9'-3"	—
h15	0	#5	9'-9"	—
h16	120	#5	10'-3"	—
v1	1092	#5	5'-10"	—
v2	1188	#5	4'-8"	—
v3	296	#5	4'-5"	—

BILL OF MATERIAL

Item	Unit	Total
Concrete Removal	Cu. Yd.	519.9
Reinforcement Bars	Pound	76,450
Concrete Box Culverts	Cu. Yd.	519.9

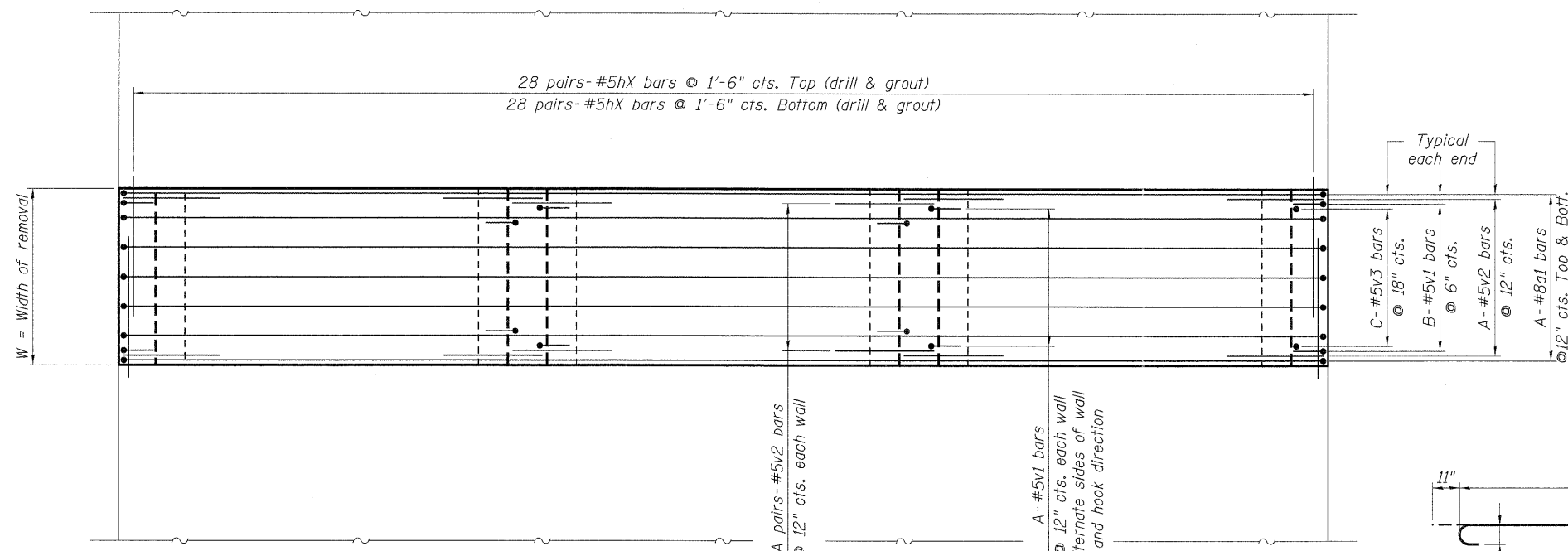
DIMENSIONS

W	N	X	A	B	C	V
4'-0"	12	4	5	8	4	12.0
5'-0"	0	5	6	10	5	14.9
6'-0"	3	6	7	12	5	17.9
7'-0"	0	7	8	14	6	20.9
8'-0"	2	8	9	16	7	23.9
9'-0"	0	9	10	18	7	26.9
10'-0"	1	10	11	20	8	29.9
11'-0"	0	11	12	22	9	32.9
12'-0"	1	12	13	24	9	35.9
13'-0"	2	13	14	26	10	38.8
14'-0"	2	14	15	28	11	41.8
15'-0"	0	15	16	30	11	44.8
16'-0"	1	16	17	32	12	47.8

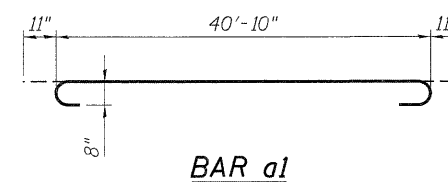
W - Width of repair strip, feet.
 N - Number of repair strips of width W. See Shts. S-4 and S-5.
 X - Reinforcement identifying number for #5hX bars.
 V - Volume of Concrete Removal and Concrete Structures, Cubic Yards.
 * The plans do not contain repair strips of these widths. Information is provided in the event that the width of a repair strip needs to be adjusted in the field.

NOTES:

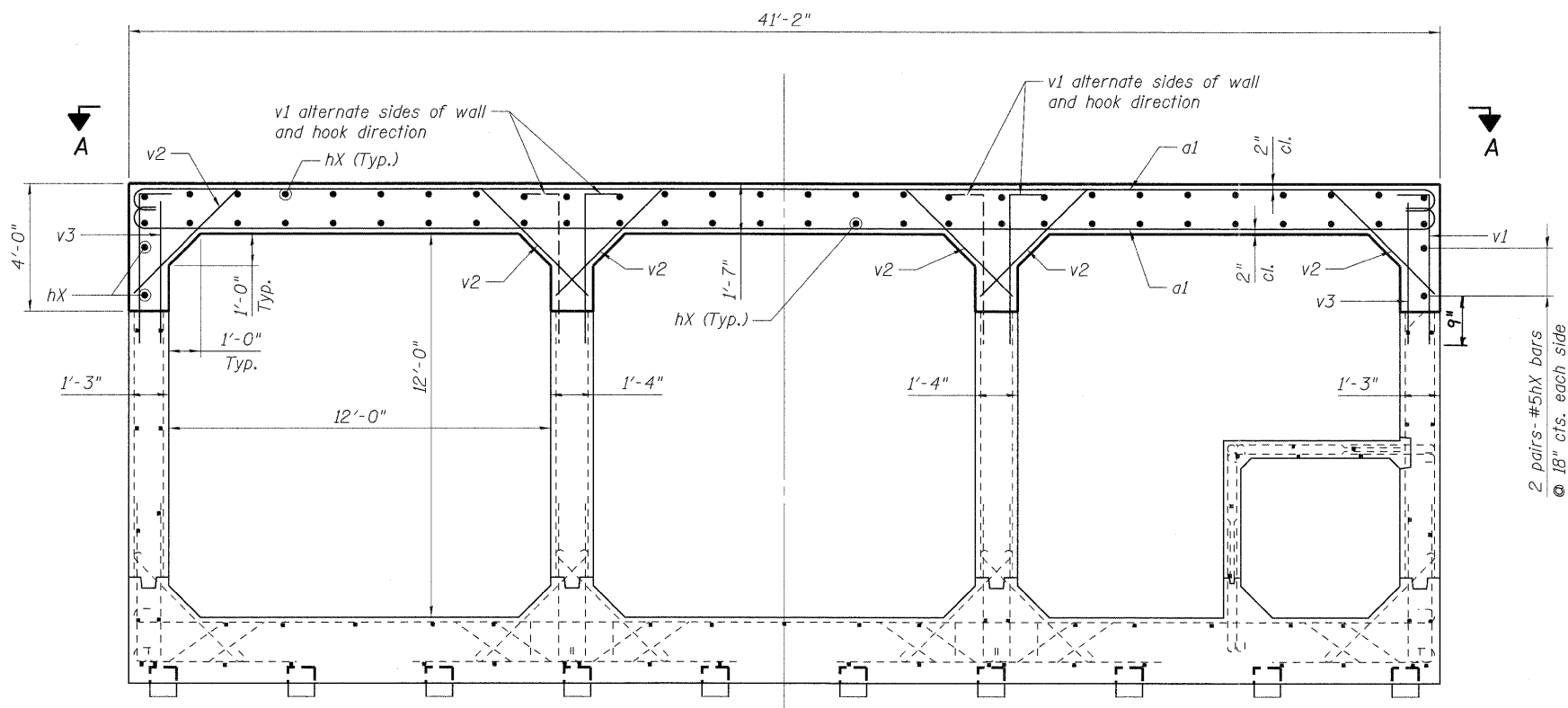
- Reinforcement bars shall conform to the requirements of ASTM A 706 Gr 60. See Special Provisions.
- Drill and epoxy grout bars in drilled holes according to Section 584 of the IDOT Standard Specifications. Method and grout are subject to the approval of the Engineer. The cost of drilling and grouting shall be included with Reinforcement Bars.
- Prior to placing new concrete, full depth saw cuts shall be cleaned and prepared according to the Surface Preparation section of the Guide Bridge Special Provision for Structural Repair of Concrete.



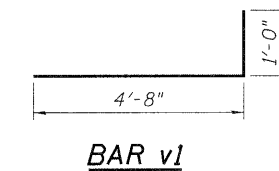
VIEW A-A - REINFORCEMENT OF TOP SLAB



BAR a1



CROSS SECTION OF BOX CULVERT



BAR v1

FILE NAME = ... USER NAME = #USER# ... DESIGNED - JLR ... REVISED - ... DRAWN - JLR ... REVISED - ... CHECKED - MDJ ... REVISED - ... DATE - 02/04/11 ... REVISED - ...
 TENG & ASSOCIATES, INC. ENGINEERS/ARCHITECTS/PLANNERS CHICAGO, ILLINOIS
 STATE OF ILLINOIS DEPARTMENT OF TRANSPORTATION I-70 CONNECTION CAHOKIA CANAL BOX CULVERT REPAIR PLANS
 SECTIONS & DETAILS SHEET 5 OF 5
 SCALE: SHEET NO. S-18 OF S-18 STA. 150+80.33 TO STA.