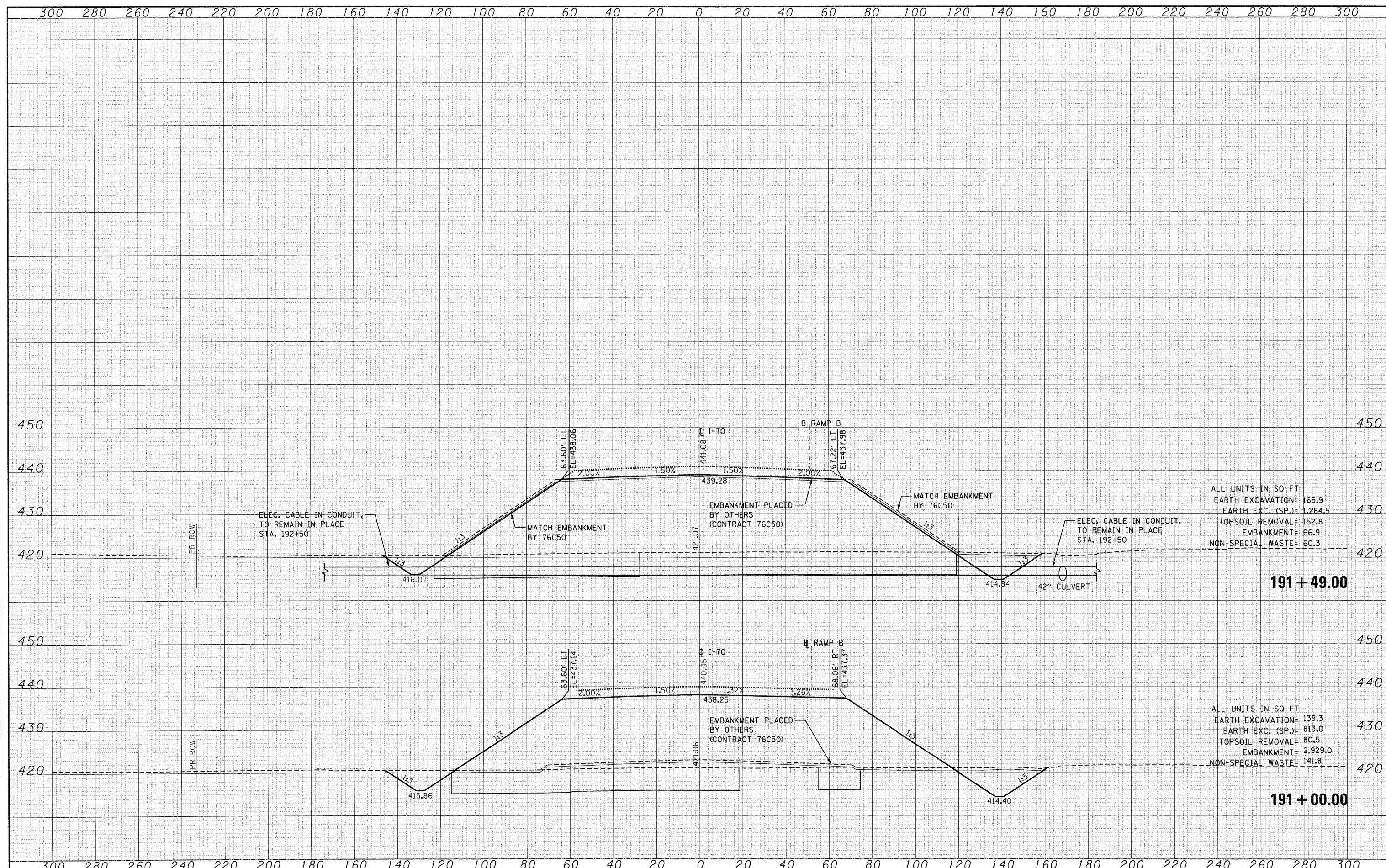


DATE	
BY	
REVIEWED	
BY	
DATE	
NO.	

DATE	
BY	
REVIEWED	
BY	
DATE	
NO.	



ALL UNITS IN SQ FT
 EARTH EXCAVATION= 165.9
 EARTH EXC. (SP.)= 1,284.5
 TOPSOIL REMOVAL= 152.8
 EMBANKMENT= 66.9
 NON-SPECIAL WASTE= 60.3

191 + 49.00

ALL UNITS IN SQ FT
 EARTH EXCAVATION= 139.3
 EARTH EXC. (SP.)= 813.0
 TOPSOIL REMOVAL= 80.5
 EMBANKMENT= 2,929.0
 NON-SPECIAL WASTE= 141.8

191 + 00.00

FILE NAME =	USER NAME = #USER#	DESIGNED - JB	REVISED -	STATE OF ILLINOIS DEPARTMENT OF TRANSPORTATION	CROSS SECTIONS INTERSTATE 70				F.A.P. RTE. 998	SECTION 82-1A	COUNTY ST. CLAIR	TOTAL SHEETS 190	SHEET NO. 184
#FILE#		DRAWN - AC	REVISED -		SCALE:				SHEET NO. OF SHEETS STA. 191+00.00 TO STA. 191+49.00				
		CHECKED - ACL	REVISED -						ILLINOIS FED. AID PROJECT				
		DATE - 02/04/11	REVISED -										