

9TH STREET			
POINT	STATION	NORTHING	EASTING
PT	10+05.00	14041436.08	2456780.38
POT	18+33.29	14040960.09	2456102.51
POT	20+66.23	14040799.59	2455933.69

RAMP A				
POINT	CURVE	STATION	NORTHING	EASTING
POT		6+71.49	14040197.44	2457222.50
PC	RAMP_C6-1	7+71.49	14040125.83	2457292.30
PI	RAMP_C6-1	9+01.08	14040033.04	2457382.75
PT	RAMP_C6-1	10+30.50	14039932.72	2457464.77
PC	RAMP_C6-2	16+36.03	14039463.95	2457848.08
PI	RAMP_C6-2	18+21.27	14039320.55	2457965.34
PT	RAMP_C6-2	19+62.07	14039157.99	2457876.50

RAMP K				
POINT	CURVE	STATION	NORTHING	EASTING
POT		10+00.00	14042022.20	2456467.60
PC	RAMPK-1	12+50.32	14041981.01	2456220.69
PI	RAMPK-1	13+46.02	14041965.27	2456126.29
PT	RAMPK-1	14+40.00	14041920.04	2456041.96
PC	RAMPK-2	17+00.63	14041796.85	2455812.29
PI	RAMPK-2	19+02.19	14041701.57	2455634.66
PCC	RAMPK-2	20+85.21	14041750.91	2455439.23
PCC	RAMPK-3	20+85.21	14041750.91	2455439.23
PI	RAMPK-3	21+68.45	14041771.28	2455358.52
PT	RAMPK-3	22+48.48	14041826.63	2455296.35
POT		25+78.52	14042046.10	2455049.86

15TH STREET				
POINT	CURVE	STATION	NORTHING	EASTING
POT		0+00.00	14039109.38	2457242.23
POT		5+00.00	14039459.82	2457598.87
POT		15+24.82	14040178.10	2458329.84

\* THREE-POINT TIE SET FOR THIS POINT

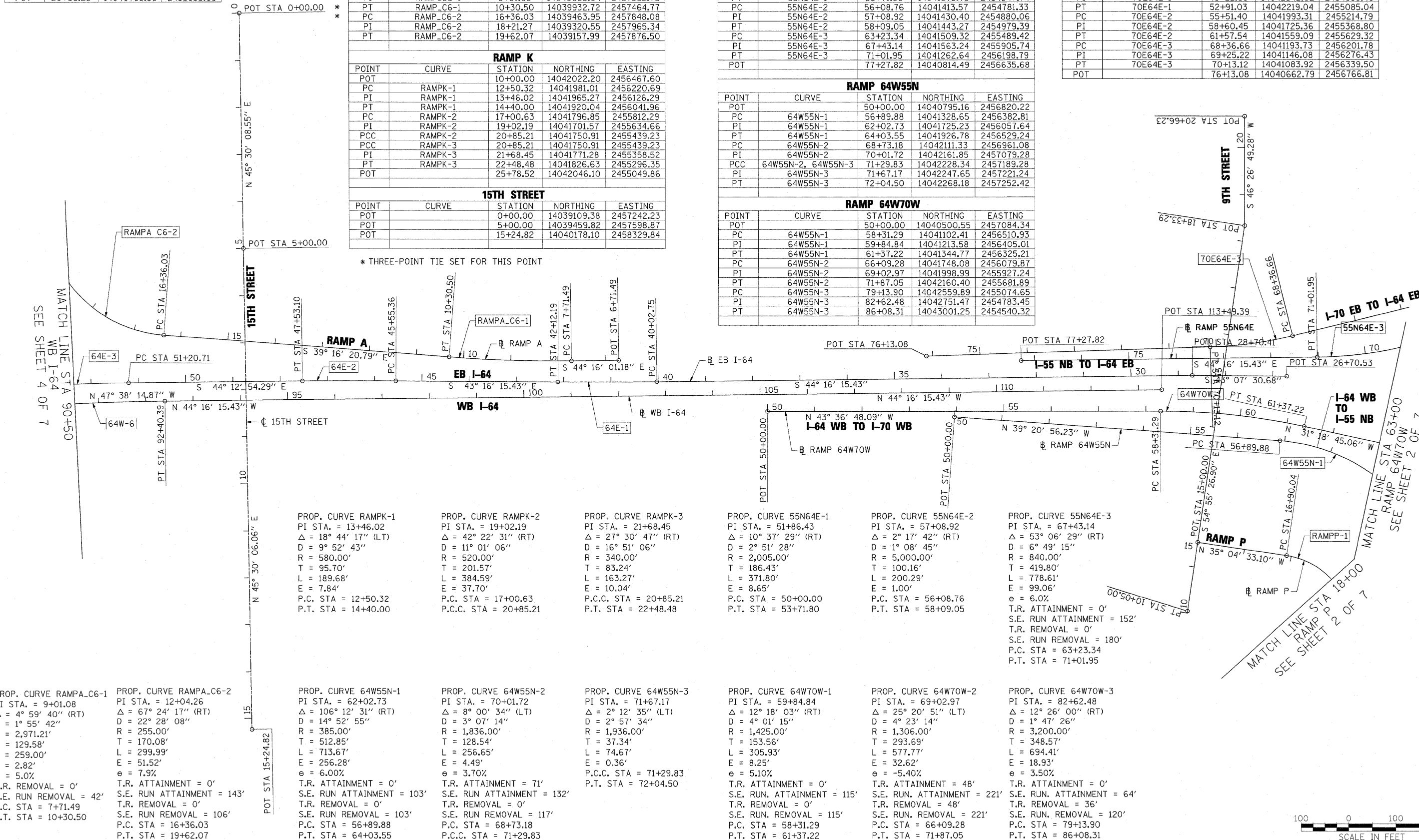
COORDINATE TABLES

RAMP 55N64E				
POINT	CURVE	STATION	NORTHING	EASTING
PC	55N64E-1	50+00.00	14041277.75	2454189.10
PI	55N64E-1	51+86.43	14041342.42	2454363.96
PT	55N64E-1	53+71.80	14041373.75	2454547.74
PC	55N64E-2	56+08.76	14041413.57	2454781.33
PI	55N64E-2	57+08.92	14041430.40	2454880.06
PT	55N64E-2	58+09.05	14041443.27	2454979.39
PC	55N64E-3	63+23.34	14041509.32	2455489.42
PI	55N64E-3	67+43.14	14041563.24	2455905.74
PT	55N64E-3	71+01.95	14041262.64	2456198.79
POT		77+27.82	14040814.49	2456635.68

RAMP 64W55N				
POINT	CURVE	STATION	NORTHING	EASTING
POT		50+00.00	14040795.16	2456820.22
PC	64W55N-1	56+89.88	14041328.65	2456382.81
PI	64W55N-1	62+02.73	14041725.23	2456057.64
PT	64W55N-1	64+03.55	14041926.78	2456529.24
PC	64W55N-2	68+73.18	14042111.33	2456961.08
PI	64W55N-2	70+01.72	14042161.85	2457079.28
PCC	64W55N-2, 64W55N-3	71+29.83	14042228.34	2457189.28
PI	64W55N-3	71+67.17	14042247.65	2457221.24
PT	64W55N-3	72+04.50	14042268.18	2457252.42

RAMP 64W70W				
POINT	CURVE	STATION	NORTHING	EASTING
POT		50+00.00	14040500.55	2457084.34
PC	64W55N-1	58+31.29	14041102.41	2456510.93
PI	64W55N-1	59+84.84	14041213.58	2456405.01
PT	64W55N-1	61+37.22	14041344.77	2456325.21
PC	64W55N-2	66+09.28	14041748.08	2456079.87
PI	64W55N-2	69+02.97	14041998.99	2455927.24
PT	64W55N-2	71+87.05	14042160.40	2455681.89
PC	64W55N-3	79+13.90	14042559.89	2455074.65
PI	64W55N-3	82+62.48	14042751.47	2454783.45
PT	64W55N-3	86+08.31	14043001.25	2454540.32

RAMP 70E64E				
POINT	CURVE	STATION	NORTHING	EASTING
POT		43+42.86	14042957.31	2454495.17
PC	70E64E-1	45+49.86	14042808.97	2454639.56
PI	70E64E-1	49+22.39	14042542.02	2454899.40
PT	70E64E-1	52+91.03	14042219.04	2455085.04
PC	70E64E-2	55+51.40	14041993.31	2455214.79
PI	70E64E-2	58+60.45	14041725.36	2455368.80
PT	70E64E-2	61+57.54	14041559.09	2455629.32
PC	70E64E-3	68+36.66	14041193.73	2456201.78
PI	70E64E-3	69+25.22	14041146.08	2456276.43
PT	70E64E-3	70+13.12	14041083.92	2456339.50
POT		76+13.08	14040662.79	2456766.81



PROP. CURVE RAMPK-1 PI STA. = 13+46.02 Δ = 18° 44' 17" (LT) D = 9° 52' 43" R = 580.00' T = 95.70' L = 189.68' E = 7.84' P.C. STA = 12+50.32 P.T. STA = 14+40.00	PROP. CURVE RAMPK-2 PI STA. = 19+02.19 Δ = 42° 22' 31" (RT) D = 11° 01' 06" R = 520.00' T = 201.57' L = 384.59' E = 37.70' P.C. STA = 17+00.63 P.C.C. STA = 20+85.21	PROP. CURVE RAMPK-3 PI STA. = 21+68.45 Δ = 27° 30' 47" (RT) D = 16° 51' 06" R = 340.00' T = 83.24' L = 163.27' E = 10.04' P.C.C. STA = 20+85.21 P.T. STA = 22+48.48	PROP. CURVE 55N64E-1 PI STA. = 51+86.43 Δ = 10° 37' 29" (RT) D = 2° 51' 28" R = 2,005.00' T = 186.43' L = 371.80' E = 8.65' P.C. STA = 50+00.00 P.T. STA = 53+71.80	PROP. CURVE 55N64E-2 PI STA. = 57+08.92 Δ = 2° 17' 42" (RT) D = 1° 08' 45" R = 5,000.00' T = 100.16' L = 200.29' E = 1.00' P.C. STA = 56+08.76 P.T. STA = 58+09.05	PROP. CURVE 55N64E-3 PI STA. = 67+43.14 Δ = 53° 06' 29" (RT) D = 6° 49' 15" R = 840.00' T = 419.80' L = 778.61' E = 99.06' e = 6.0% T.R. ATTAINMENT = 0' S.E. RUN ATTAINMENT = 152' T.R. REMOVAL = 0' S.E. RUN REMOVAL = 180' P.C. STA = 63+23.34 P.T. STA = 71+01.95
--	---	--	--	---	---

PROP. CURVE RAMP A_C6-1 PI STA. = 9+01.08 Δ = 4° 59' 40" (RT) D = 1° 55' 42" R = 2,971.21' T = 129.58' L = 259.00' E = 2.82' e = 5.0% T.R. REMOVAL = 0' S.E. RUN REMOVAL = 42' P.C. STA = 7+71.49 P.T. STA = 10+30.50	PROP. CURVE RAMP A_C6-2 PI STA. = 12+04.26 Δ = 67° 24' 17" (RT) D = 22° 28' 08" R = 255.00' T = 170.08' L = 299.99' E = 51.52' e = 7.9% T.R. ATTAINMENT = 0' S.E. RUN ATTAINMENT = 143' T.R. REMOVAL = 0' S.E. RUN REMOVAL = 106' P.C. STA = 16+36.03 P.T. STA = 19+62.07	PROP. CURVE 64W55N-1 PI STA. = 62+02.73 Δ = 106° 12' 31" (RT) D = 14° 52' 55" R = 385.00' T = 512.85' L = 713.67' E = 256.28' e = 6.00% T.R. ATTAINMENT = 0' S.E. RUN ATTAINMENT = 103' T.R. REMOVAL = 0' S.E. RUN REMOVAL = 103' P.C. STA = 56+89.88 P.T. STA = 64+03.55	PROP. CURVE 64W55N-2 PI STA. = 70+01.72 Δ = 8° 00' 34" (LT) D = 3° 07' 14" R = 1,836.00' T = 128.54' L = 256.65' E = 4.49' e = 3.70% T.R. ATTAINMENT = 71' S.E. RUN ATTAINMENT = 132' T.R. REMOVAL = 0' S.E. RUN REMOVAL = 117' P.C. STA = 68+73.18 P.C.C. STA = 71+29.83	PROP. CURVE 64W55N-3 PI STA. = 71+67.17 Δ = 2° 12' 35" (LT) D = 2° 57' 34" R = 1,936.00' T = 37.34' L = 74.67' E = 0.36' P.C.C. STA = 71+29.83 P.T. STA = 72+04.50	PROP. CURVE 64W70W-1 PI STA. = 59+84.84 Δ = 12° 18' 03" (RT) D = 4° 01' 15" R = 1,425.00' T = 153.56' L = 305.93' E = 8.25' e = 5.10% T.R. ATTAINMENT = 0' S.E. RUN ATTAINMENT = 115' T.R. REMOVAL = 0' S.E. RUN REMOVAL = 115' P.C. STA = 58+31.29 P.T. STA = 61+37.22	PROP. CURVE 64W70W-2 PI STA. = 69+02.97 Δ = 25° 20' 51" (LT) D = 4° 23' 14" R = 1,306.00' T = 293.69' L = 577.77' E = 32.62' e = -5.40% T.R. ATTAINMENT = 48' S.E. RUN ATTAINMENT = 221' T.R. REMOVAL = 48' S.E. RUN REMOVAL = 221' P.C. STA = 66+09.28 P.T. STA = 71+87.05	PROP. CURVE 64W70W-3 PI STA. = 82+62.48 Δ = 12° 26' 00" (RT) D = 1° 47' 26" R = 3,200.00' T = 348.57' L = 694.41' E = 18.93' e = 3.50% T.R. ATTAINMENT = 0' S.E. RUN ATTAINMENT = 64' T.R. REMOVAL = 36' S.E. RUN REMOVAL = 120' P.C. STA = 79+13.90 P.T. STA = 86+08.31
---	---	---	---	---	---	---	--

