

PROP. CURVE 64W-1  
 PI STA. = 73+67.12  
 $\Delta = 6^\circ 45' 48''$  (RT)  
 $D = 1^\circ 27' 01''$   
 $R = 3,950.66'$   
 $T = 233.44'$   
 $L = 466.34'$   
 $E = 6.89'$   
 P.C. STA = 71+33.67  
 P.C.C. STA = 76+00.02

PROP. CURVE 64W-2  
 PI STA. = 79+29.11  
 $\Delta = 9^\circ 39' 54''$  (RT)  
 $D = 1^\circ 28' 19''$   
 $R = 3,892.58'$   
 $T = 329.09'$   
 $L = 656.62'$   
 $E = 13.89'$   
 P.C.C. STA = 76+00.02  
 P.C.C. STA = 82+56.64

PROP. CURVE 64W-3  
 PI STA. = 83+20.10  
 $\Delta = 2^\circ 30' 26''$  (RT)  
 $D = 1^\circ 58' 33''$   
 $R = 2,900.00'$   
 $T = 63.46'$   
 $L = 126.91'$   
 $E = 0.69'$   
 P.C.C. STA = 82+56.64  
 P.C.C. STA = 83+83.54

PROP. CURVE 64W-4  
 PI STA. = 85+63.51  
 $\Delta = 4^\circ 34' 49''$  (RT)  
 $D = 1^\circ 16' 24''$   
 $R = 4,500.00'$   
 $T = 179.97'$   
 $L = 359.74'$   
 $E = 3.60'$   
 P.C.C. STA = 83+83.54  
 P.C.C. STA = 87+43.28

PROP. CURVE 64W-5  
 PI STA. = 88+27.34  
 $\Delta = 3^\circ 30' 05''$  (RT)  
 $D = 2^\circ 05' 01''$   
 $R = 2,750.00'$   
 $T = 84.06'$   
 $L = 168.06'$   
 $E = 1.28'$   
 P.C.C. STA = 87+43.28  
 P.C.C. STA = 89+11.35

PROP. CURVE 64W-6  
 PI STA. = 90+75.92  
 $\Delta = 3^\circ 21' 59''$  (RT)  
 $D = 1^\circ 01' 23''$   
 $R = 5,600.16'$   
 $T = 164.57'$   
 $L = 329.05'$   
 $E = 2.42'$   
 P.C.C. STA = 89+11.35  
 P.T. STA = 92+40.39

MATCH LINE STA 62+00  
 WB I-64  
 SEE BELOW

**COORDINATE TABLES**

WB I-64				
POINT	CURVE	STATION	NORTHING	EASTING
POT		50+00.00	14037929.58	2461791.44
PC	64W-1	71+33.67	14038494.22	2459733.83
PI	64W-1	73+67.12	14038555.99	2459292.43
PCC	64W-1, 64W-2	76+00.02	14038643.85	2459292.43
PI	64W-2	79+29.11	14038767.71	2458987.54
PCC	64W-2, 64W-3	82+56.64	14038940.99	2458707.77
PI	64W-3	83+20.10	14038974.41	2458653.81
PCC	64W-3, 64W-4	83+83.54	14039010.16	2458601.37
PI	64W-4	85+63.51	14039111.52	2458452.67
PCC	64W-4, 64W-5	87+43.28	14039224.44	2458312.54
PI	64W-5	88+27.34	14039277.18	2458247.08
PCC	64W-5, 64W-6	89+11.35	14039333.82	2458184.97
PI	64W-6	90+75.92	14039444.71	2458063.37
PT	64W-6	92+40.39	14039562.55	2457948.49
POT		113+49.39	14041072.69	2456476.31

EB I-64				
POINT	CURVE	STATION	NORTHING	EASTING
POT		26+70.53	14041244.03	2456272.79
POT		28+70.41	14041098.15	2456409.42
PC	64E-1	40+02.75	14040287.34	2457199.86
PI	64E-1	41+07.48	14040212.35	2457272.96
PT	64E-1	42+12.19	14040136.10	2457344.74
PC	64E-2	45+55.36	14039886.23	2457579.96
PI	64E-2	46+54.23	14039814.24	2457647.73
PT	64E-2	47+53.10	14039743.38	2457716.68
PC	64E-3	51+20.71	14039479.90	2457973.04
PI	64E-3	53+19.44	14039337.47	2458111.62
PCC	64E-3, 64E-4	55+17.76	14039211.15	2458265.04
PI	64E-4	58+88.81	14038975.31	2458551.49
PCC	64E-4, 64E-5	62+57.74	14038796.18	2458876.44
PI	64E-5	67+01.39	14038582.00	2459264.96
PT	64E-5	71+40.92	14038464.60	2459692.80
POT		93+25.24	14037886.56	2461799.25

RAMP B				
POINT	CURVE	STATION	NORTHING	EASTING
POT		10+00.00	14039100.85	2457932.54
PC	RAMPB-1	10+34.18	14039120.56	2457960.47
PI	RAMPB-1	12+04.26	14039218.65	2458099.41
PT	RAMPB-1	13+34.17	14039128.06	2458243.35
PC	RAMPB-2	16+85.54	14038940.91	2458540.73
PI	RAMPB-2	17+36.68	14038913.67	2458584.02
PT	RAMPB-2	17+87.82	14038887.21	2458627.78
POT		18+96.62	14038830.93	2458720.89

\* THREE-POINT TIE SET FOR THIS POINT

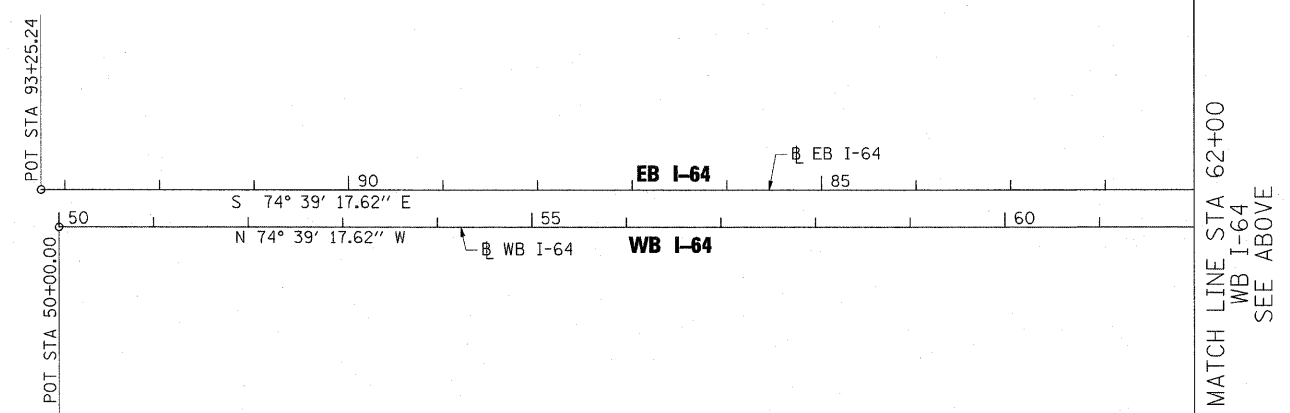
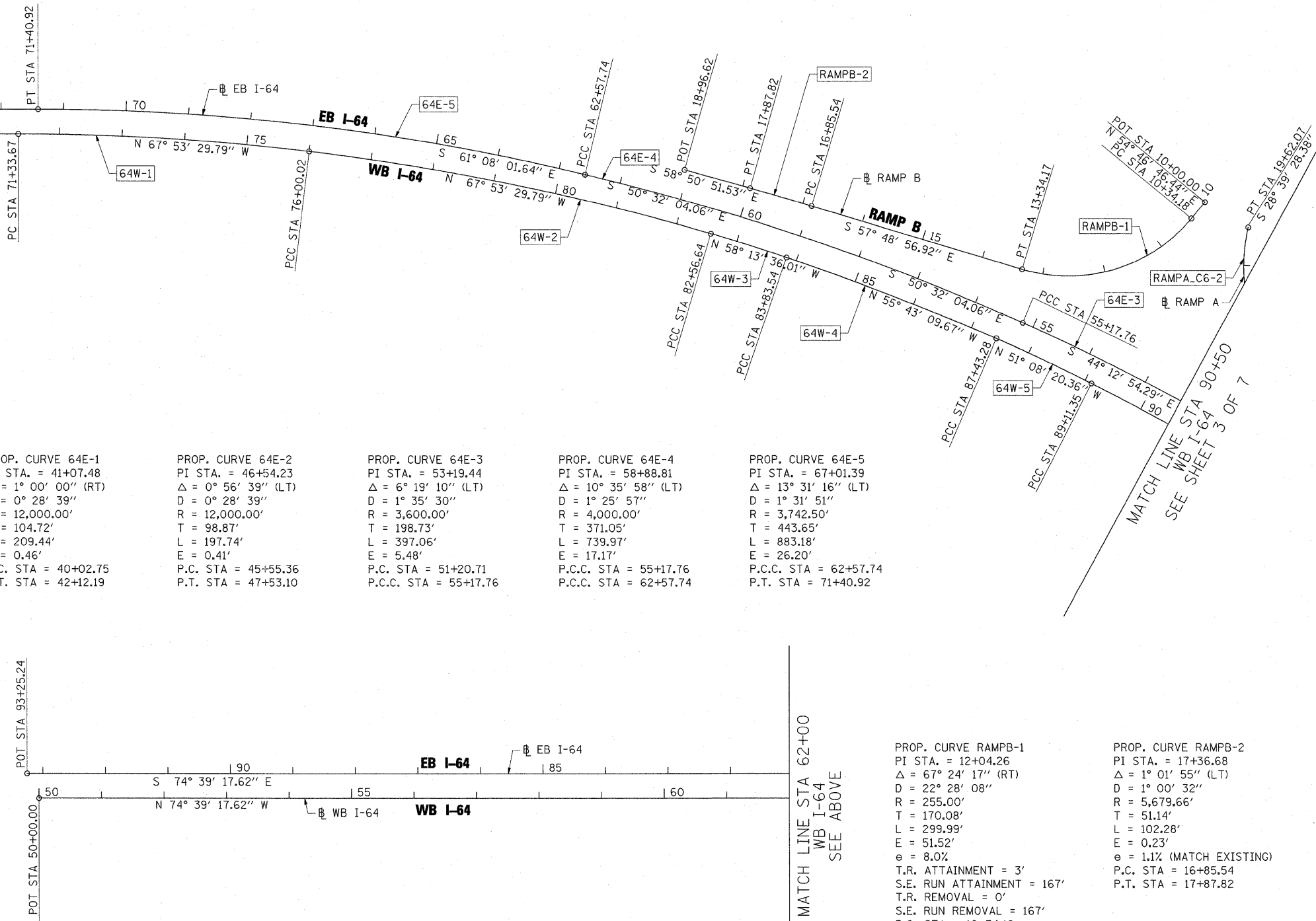
PROP. CURVE 64E-1  
 PI STA. = 41+07.48  
 $\Delta = 1^\circ 00' 00''$  (RT)  
 $D = 0^\circ 28' 39''$   
 $R = 12,000.00'$   
 $T = 104.72'$   
 $L = 209.44'$   
 $E = 0.46'$   
 P.C. STA = 40+02.75  
 P.T. STA = 42+12.19

PROP. CURVE 64E-2  
 PI STA. = 46+54.23  
 $\Delta = 0^\circ 56' 39''$  (LT)  
 $D = 0^\circ 28' 39''$   
 $R = 12,000.00'$   
 $T = 98.87'$   
 $L = 197.74'$   
 $E = 0.41'$   
 P.C. STA = 45+55.36  
 P.T. STA = 47+53.10

PROP. CURVE 64E-3  
 PI STA. = 53+19.44  
 $\Delta = 6^\circ 19' 10''$  (LT)  
 $D = 1^\circ 35' 30''$   
 $R = 3,600.00'$   
 $T = 198.73'$   
 $L = 397.06'$   
 $E = 5.48'$   
 P.C. STA = 51+20.71  
 P.C.C. STA = 55+17.76

PROP. CURVE 64E-4  
 PI STA. = 58+88.81  
 $\Delta = 10^\circ 35' 58''$  (LT)  
 $D = 1^\circ 25' 57''$   
 $R = 4,000.00'$   
 $T = 371.05'$   
 $L = 739.97'$   
 $E = 17.17'$   
 P.C.C. STA = 55+17.76  
 P.C.C. STA = 62+57.74

PROP. CURVE 64E-5  
 PI STA. = 67+01.39  
 $\Delta = 13^\circ 31' 16''$  (LT)  
 $D = 1^\circ 31' 51''$   
 $R = 3,742.50'$   
 $T = 443.65'$   
 $L = 883.18'$   
 $E = 26.20'$   
 P.C.C. STA = 62+57.74  
 P.T. STA = 71+40.92



PROP. CURVE RAMPB-1  
 PI STA. = 12+04.26  
 $\Delta = 67^\circ 24' 17''$  (RT)  
 $D = 22^\circ 28' 08''$   
 $R = 255.00'$   
 $T = 170.08'$   
 $L = 299.99'$   
 $E = 51.52'$   
 $e = 8.0\%$   
 T.R. ATTAINMENT = 3'  
 S.E. RUN ATTAINMENT = 167'  
 T.R. REMOVAL = 0'  
 S.E. RUN REMOVAL = 167'  
 P.C. STA = 10+34.18  
 P.T. STA = 13+34.17

PROP. CURVE RAMPB-2  
 PI STA. = 17+36.68  
 $\Delta = 1^\circ 01' 55''$  (LT)  
 $D = 1^\circ 00' 32''$   
 $R = 5,679.66'$   
 $T = 51.14'$   
 $L = 102.28'$   
 $E = 0.23'$   
 $e = 1.1\%$  (MATCH EXISTING)  
 P.C. STA = 16+85.54  
 P.T. STA = 17+87.82

