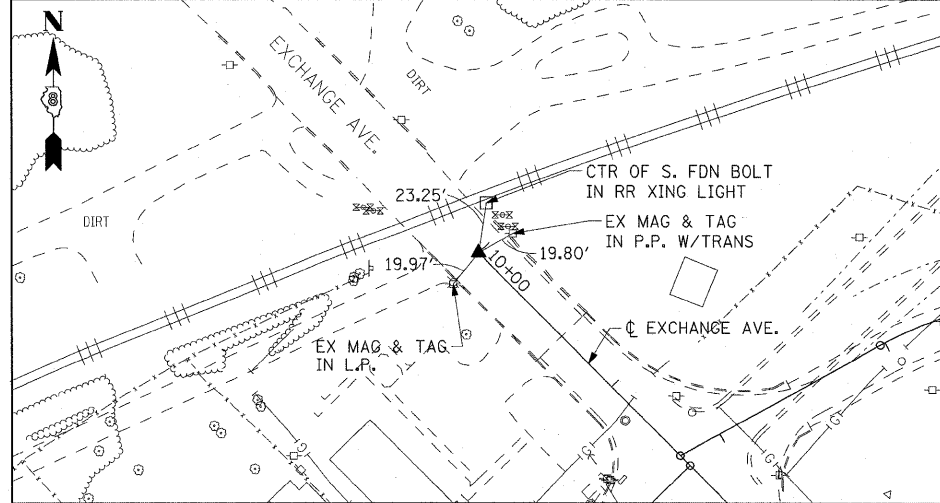
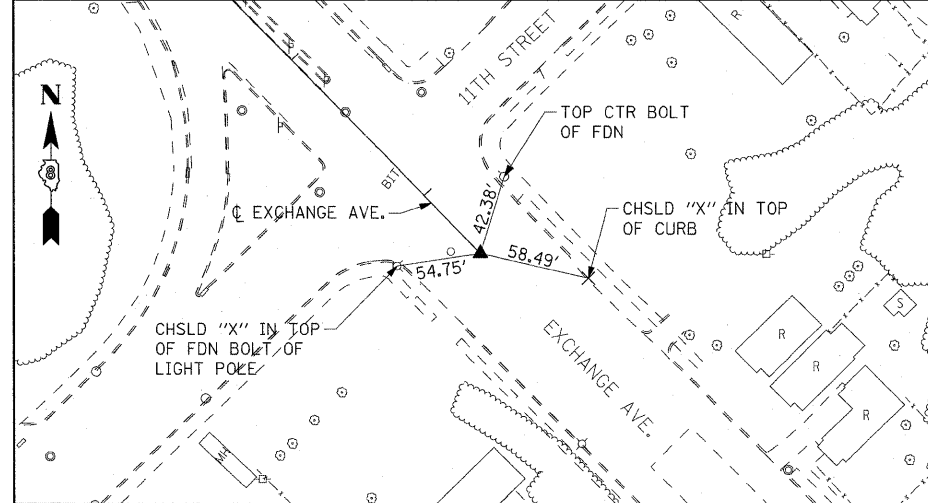


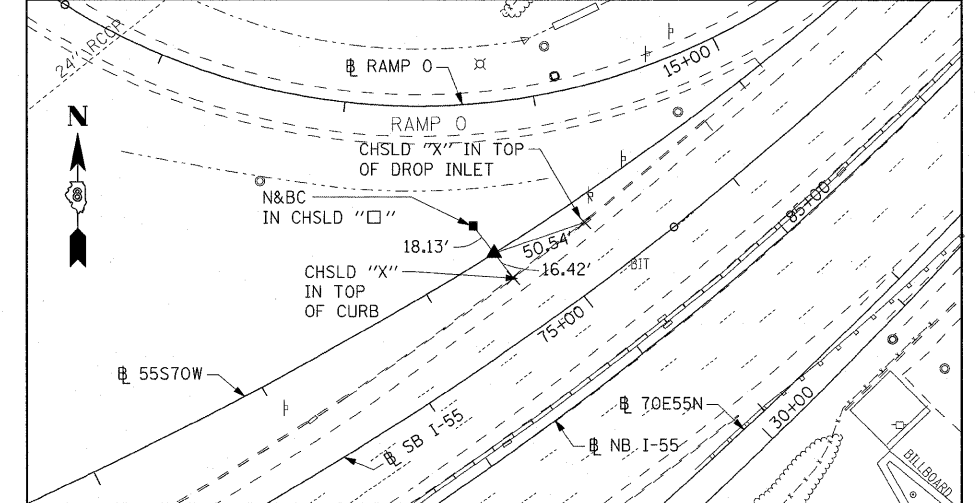
EXCHANGE AVENUE
 POT STA 10+00.00
 SET MEG NAIL IN CONC. CRACK W/CHSLD "X"
 (CONTROL POINT MAY NEED TO BE RE-ESTABLISHED DUE TO CONSTRUCTION ACTIVITY.)



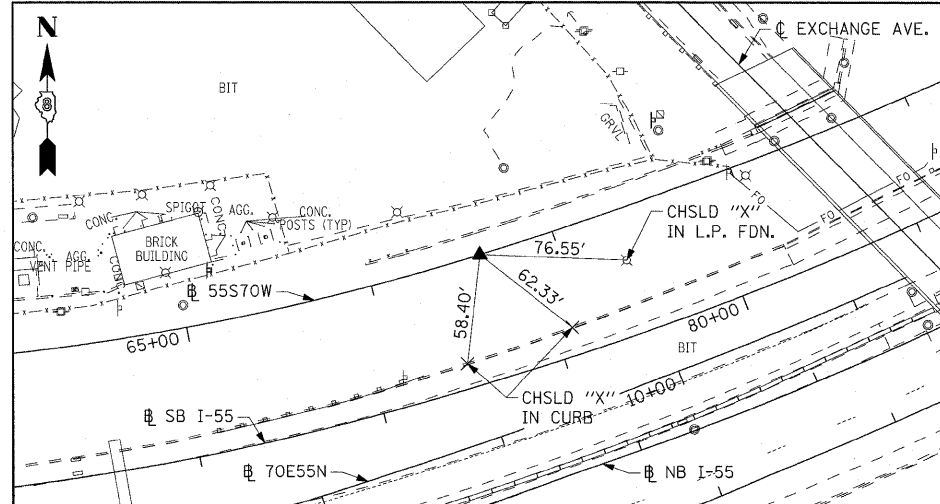
EXCHANGE AVENUE
 POT STA 27+42.42
 SET MEG NAIL IN CHSLD "□" W/CHSLD "X"



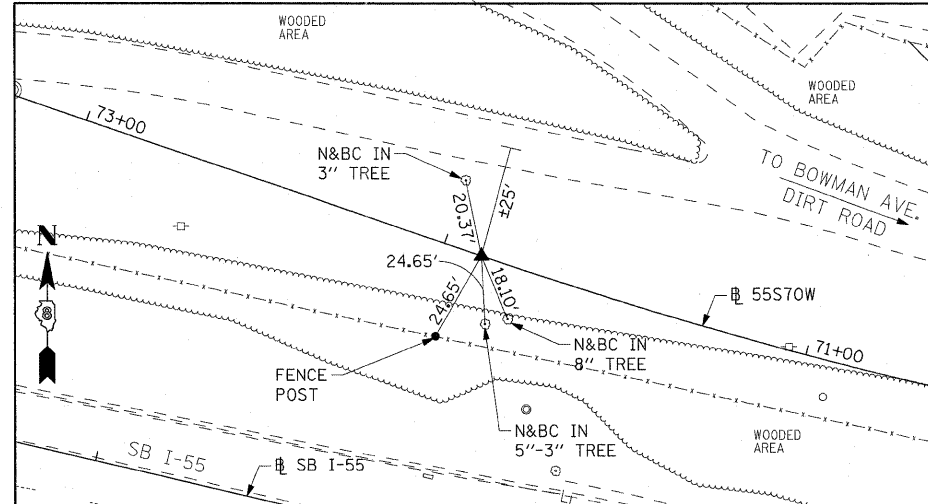
55S70W
 PCC STA 57+58.25
 SET 5/8" REBAR W/RED CAP FLUSH W/GR



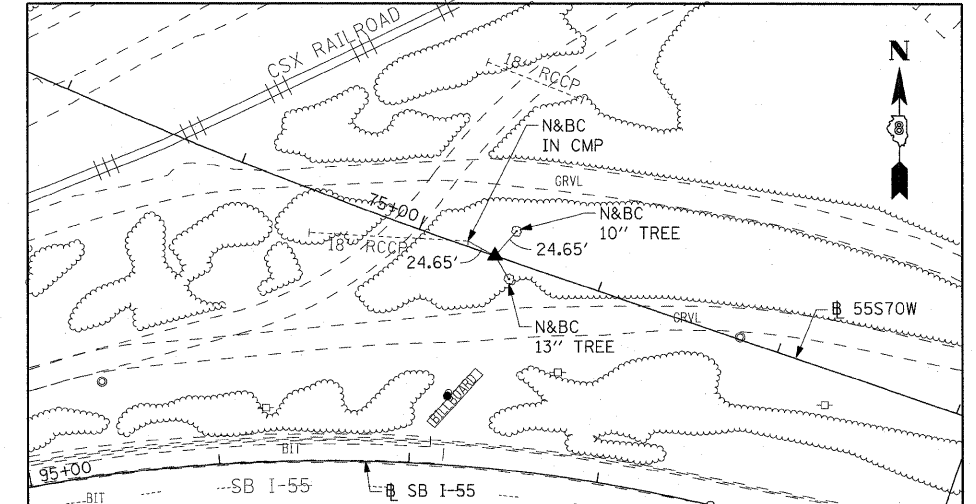
55S70W
 PCC STA 63+40.22
 SET 5/8" REBAR W/RED LINENG CAP FLUSH W/GR
 (CONTROL POINT MAY NEED TO BE RE-ESTABLISHED DUE TO CONSTRUCTION ACTIVITY.)



55S70W
 PT STA 71+89.66
 SET 5/8" REBAR W/RED CAP FLUSH W/GR

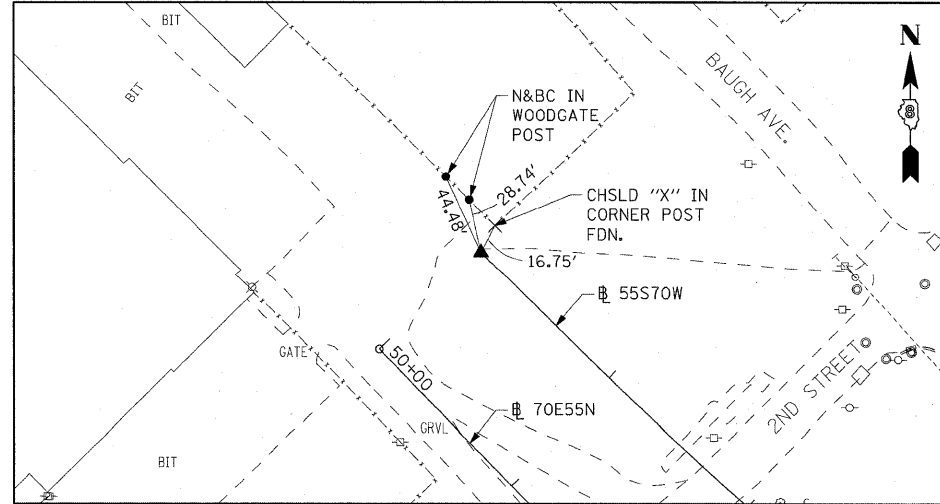


55S70W
 PC STA 74+57.77
 SET 5/8" REBAR W/RED LIN TRAV. PT CAP

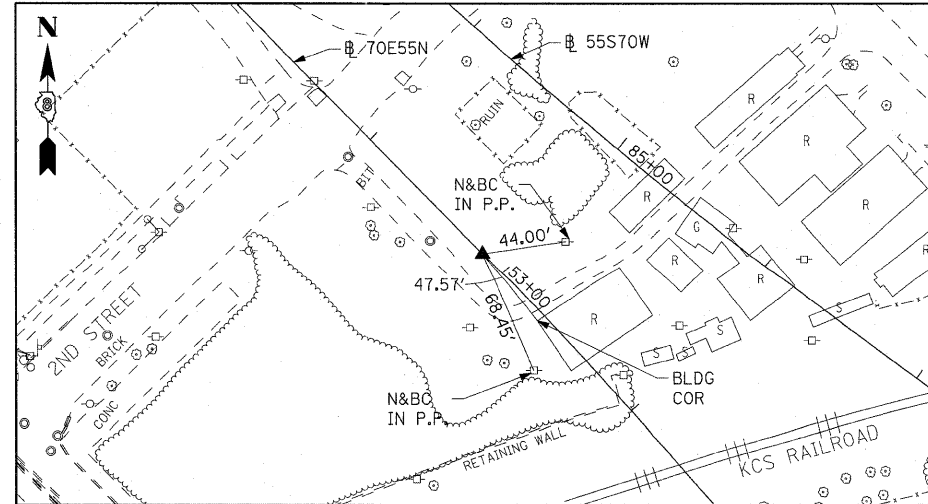


CONTROL POINT MAY NEED TO BE RE-ESTABLISHED DUE TO CONSTRUCTION ACTIVITY.

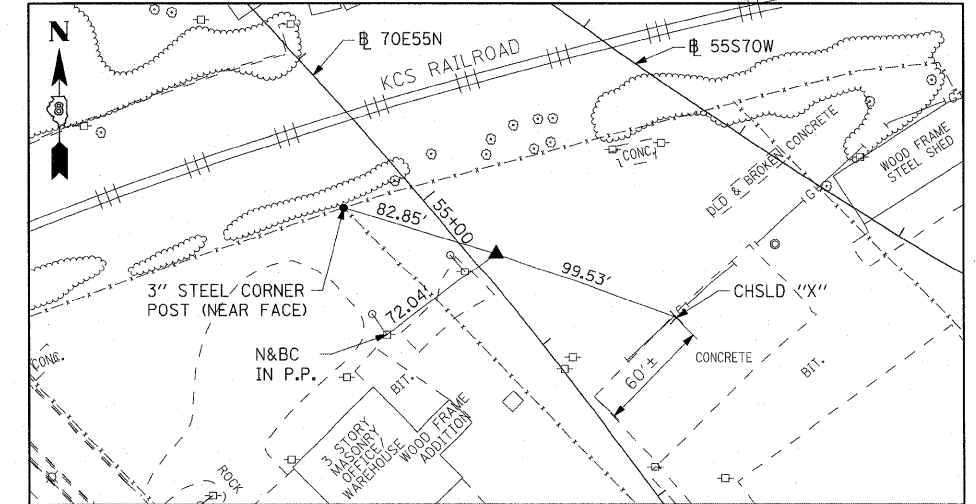
55S70W
 PT STA 87+95.40
 SET 5/8" REBAR W/RED LIN ENG. CAP FLUSH W/GR



70E55N
 PC STA 52+85.08
 5/8" I. PIN W/YELLOW CAP



70E55N
 PI STA 55+46.88
 5/8" I. PIN W/YELLOW CAP



FILE NAME =	USER NAME = lantz	DESIGNED CRH	REVISED -	STATE OF ILLINOIS DEPARTMENT OF TRANSPORTATION	ALIGNMENT, TIES AND BENCHMARKS	F.A.I. RTE.	SECTION	COUNTY	TOTAL SHEETS	SHEET NO.	
#FILE#	PLOT SCALE = 50.0000' / IN.	DRAWN CRH	REVISED -			55/64	82-1L	ST. CLAIR	60	11	
	PLOT DATE = 12/29/2010	CHECKED DBM	REVISED -			CONTRACT NO. 76C54					
		DATE JANUARY 4, 2011	REVISED -			FED. ROAD DIST. NO. [ILLINOIS] FED. AID PROJECT					
						SCALE: NONE	SHEET NO. 5 OF 7 SHEETS	STA.	TO STA.		