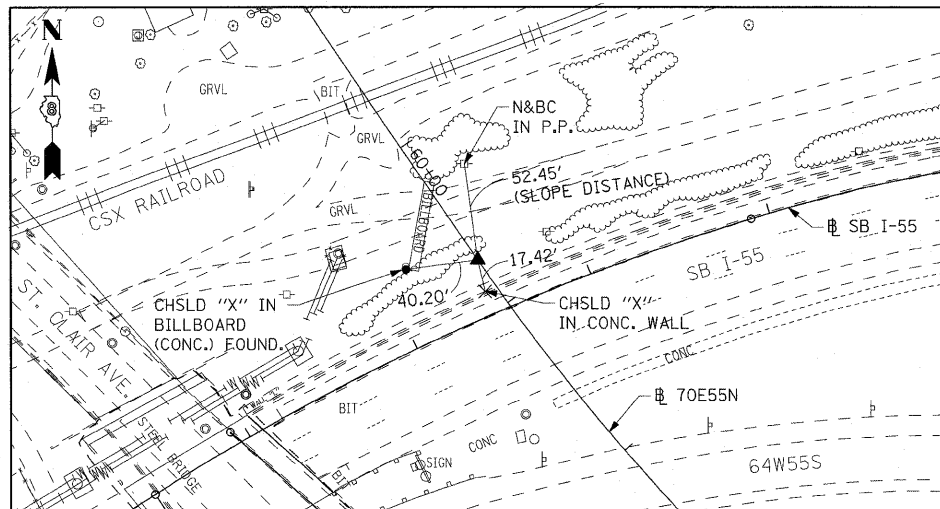
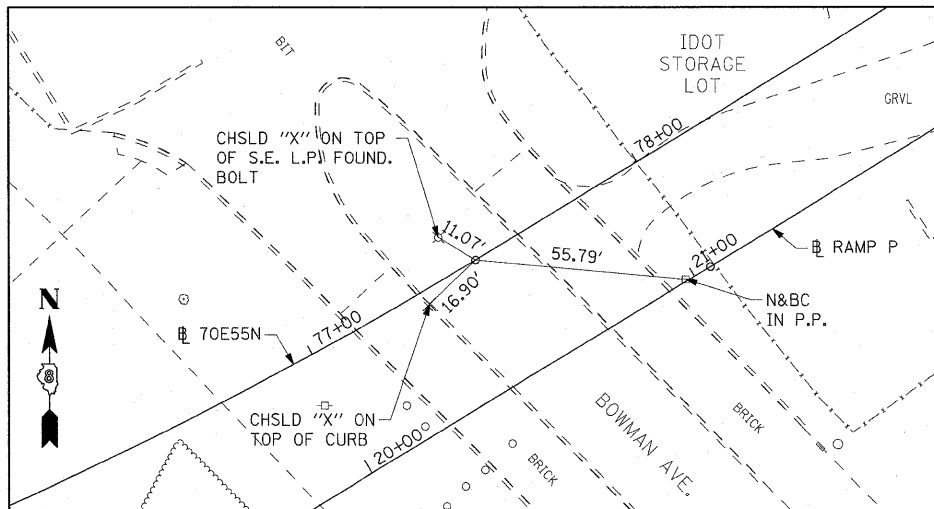


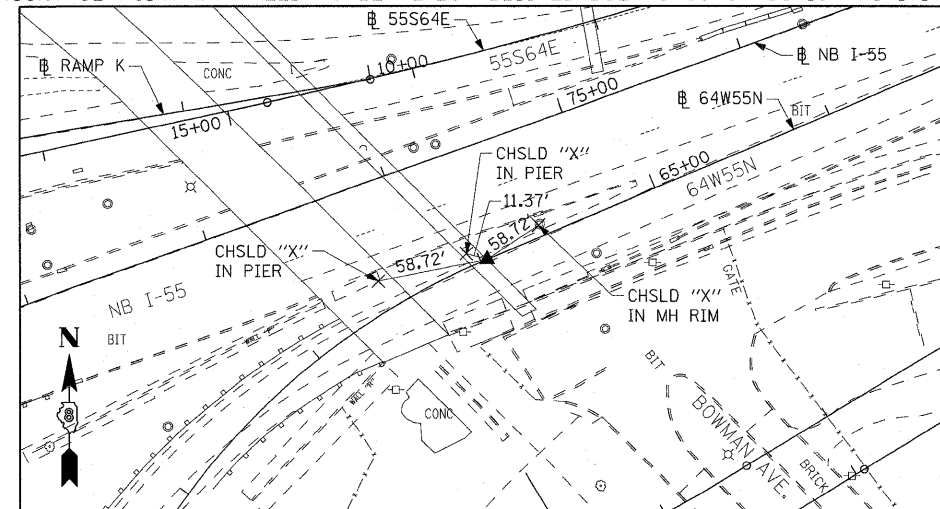
70E55N
PC 60+72.28
5/8" I. PIN W/YELLOW CAP



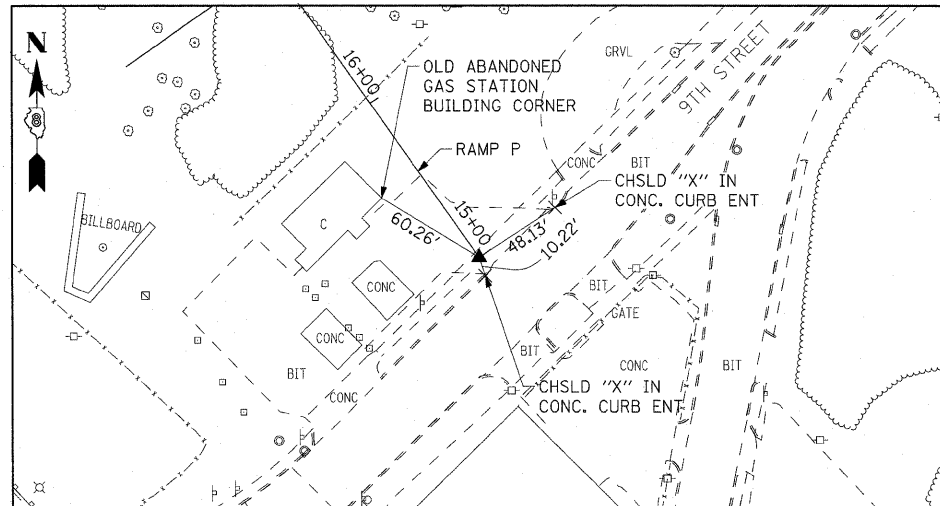
70E55N
PC 77+49.99
5/8" I. PIN



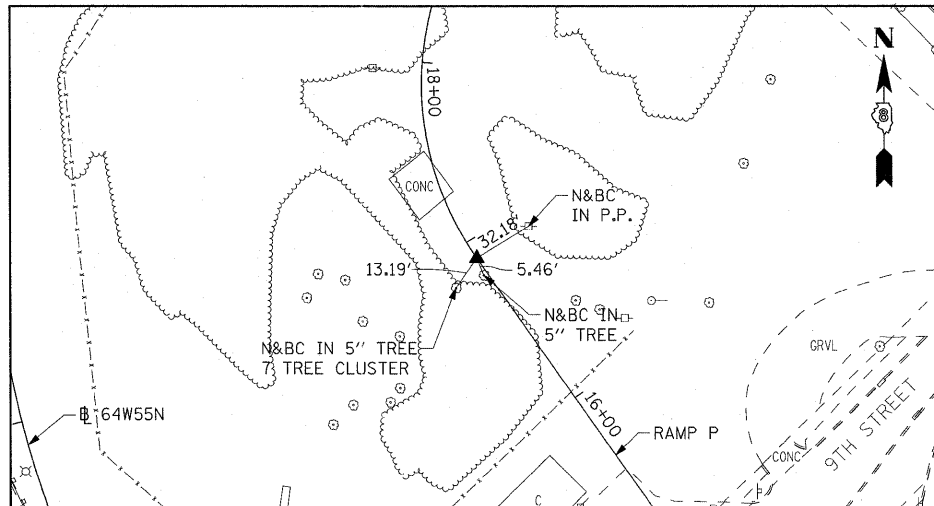
64W55N
P.T. STA 64+03.55
SET MAG NAIL IN CHSLD "□" W/CHSLD "X"
(CONTROL POINT MAY NEED TO BE RE-ESTABLISHED DUE TO CONSTRUCTION ACTIVITY.)



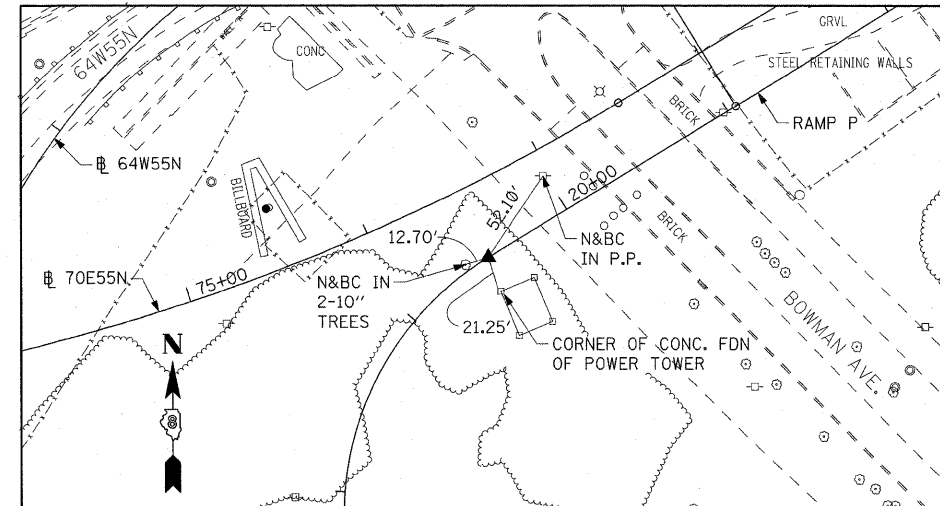
RAMP P
POT STA 15+00 = 520+44.97 (BAUGH)
SET MAG NAIL IN CONC. WITH CHISELLED "+"
(CONTROL POINT MAY NEED TO BE RE-ESTABLISHED DUE TO CONSTRUCTION ACTIVITY.)



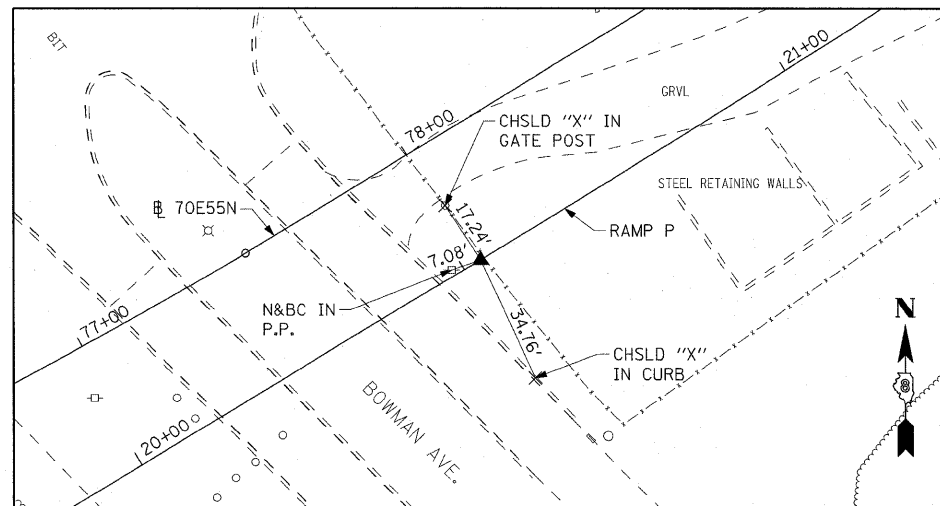
RAMP P
PC STA 16+90.04
SET 5/8" REBAR W/RED CAP FLUSH W/GR



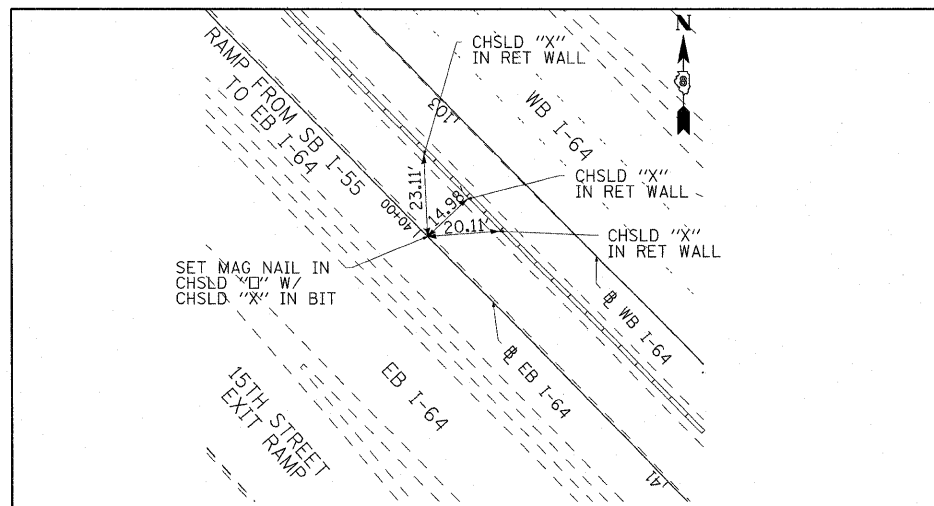
RAMP P
PT STA 19+51.32
SET 5/8" REBAR W/RED CAP FLUSH W/GR



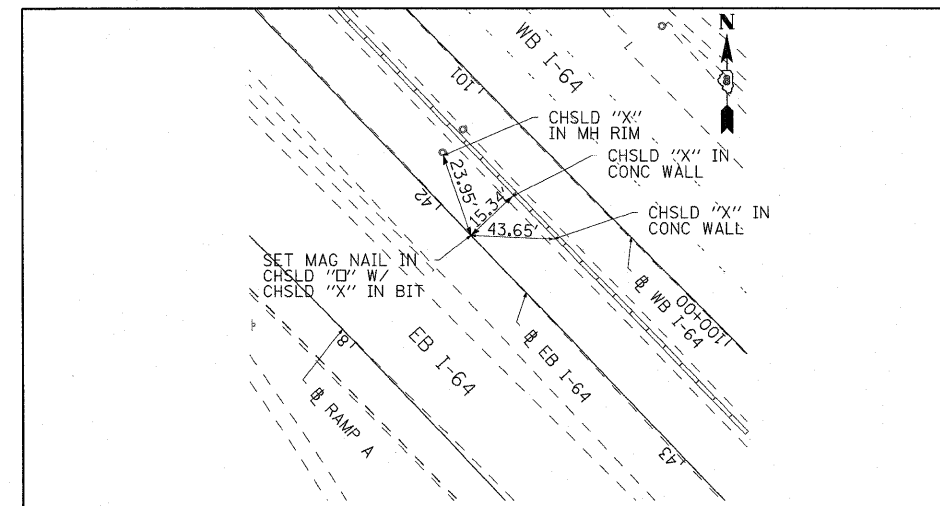
RAMP P
PC STA 21+04.96
SET 5/8" REBAR W/RED LIN ENG. CAP FLUSH W/GR



EB I-64
PC STA 40+02.75
SET MAG NAIL IN CHSLD "□" W/CHSLD "X"



EB I-64
PT STA 42+12.19
SET MAG NAIL IN CHSLD "□" W/CHSLD "X"



FILE NAME =
#FILE#

USER NAME = lertzt
PLOT SCALE = 50,000' / IN.
PLOT DATE = 12/29/2010

DESIGNED CRH
DRAWN CRH
CHECKED DBM
DATE JANUARY 4, 2011

REVISED -
REVISED -
REVISED -
REVISED -

STATE OF ILLINOIS
DEPARTMENT OF TRANSPORTATION

ALIGNMENT, TIES AND BENCHMARKS

SCALE: NONE SHEET NO. 6 OF 7 SHEETS STA. TO STA.

F.A.J. RTE.	SECTION	COUNTY	TOTAL SHEETS	SHEET NO.
55/64	B2-1L	ST. CLAIR	60	12
FED. ROAD DIST. NO. [ILLINOIS] FED. AID PROJECT			CONTRACT NO. 76C54	