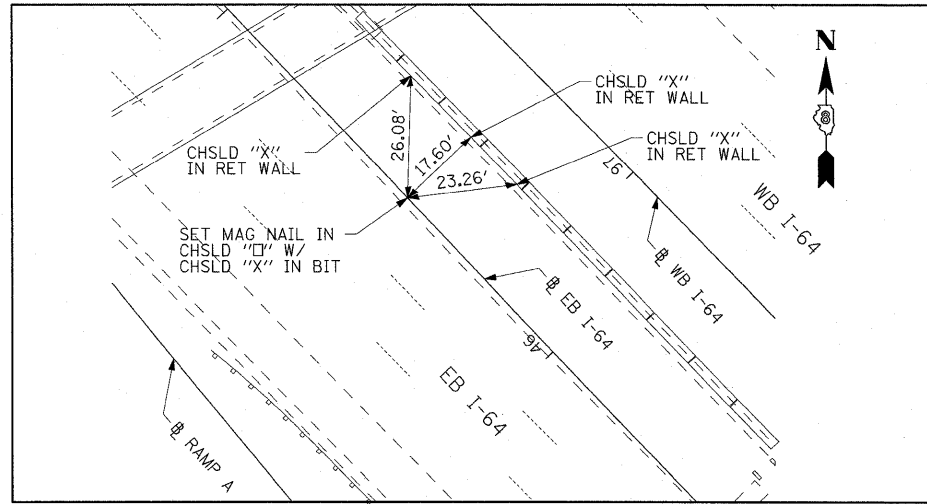
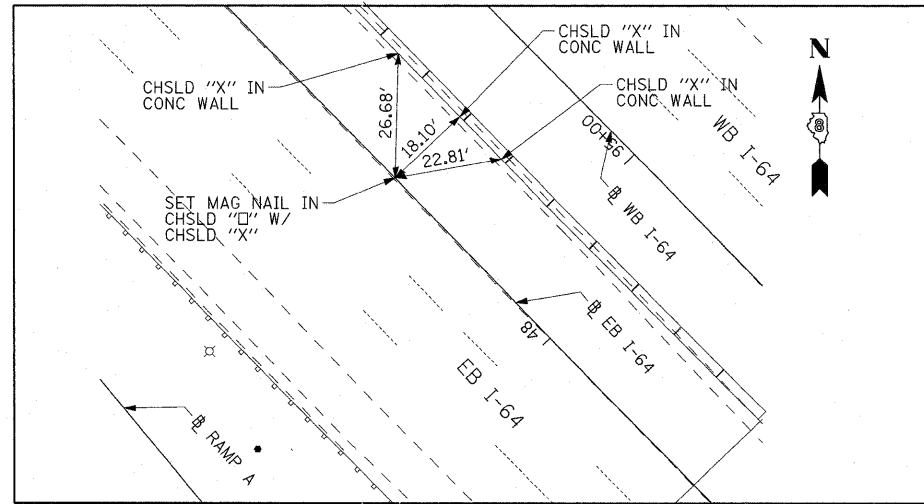


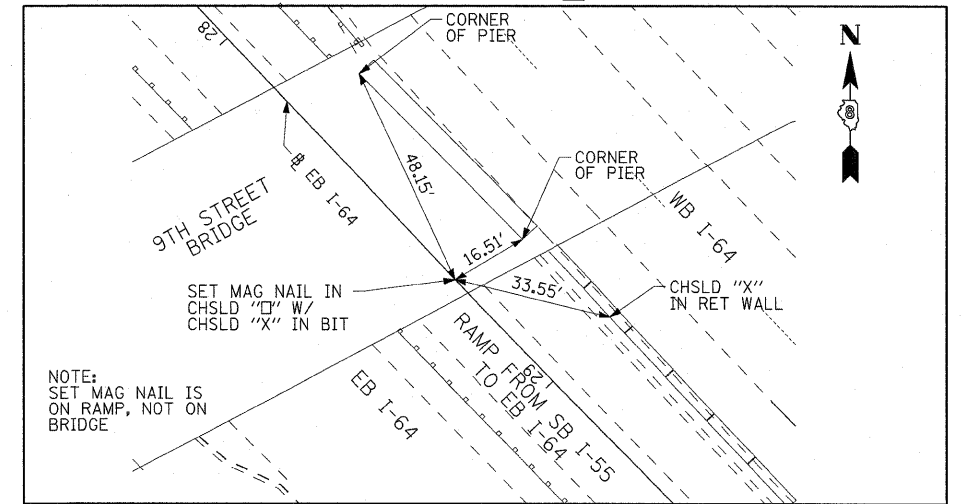
EB I-64
PC STA 45+55.36
SET MAG NAIL IN CHSLD "□" W/CHSLD "X"



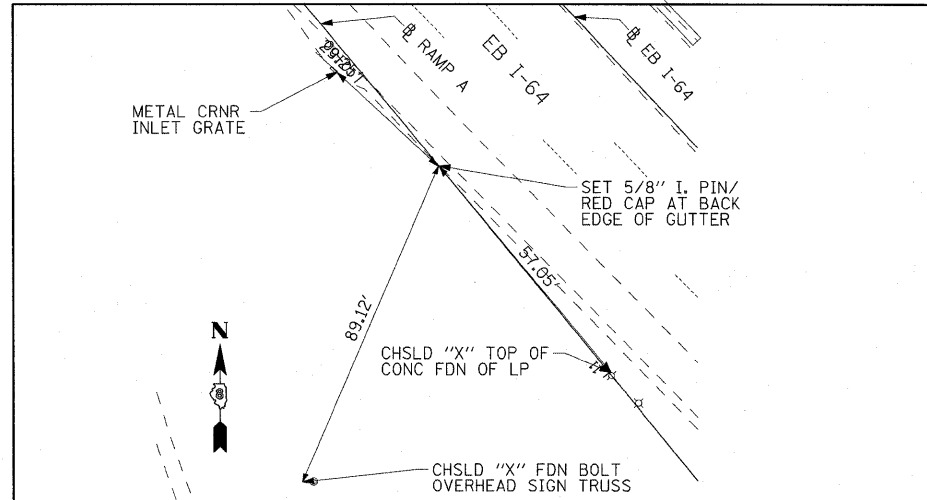
EB I-64
PT STA 47+53.10
SET MAG NAIL IN CHSLD "□" W/CHSLD "X"



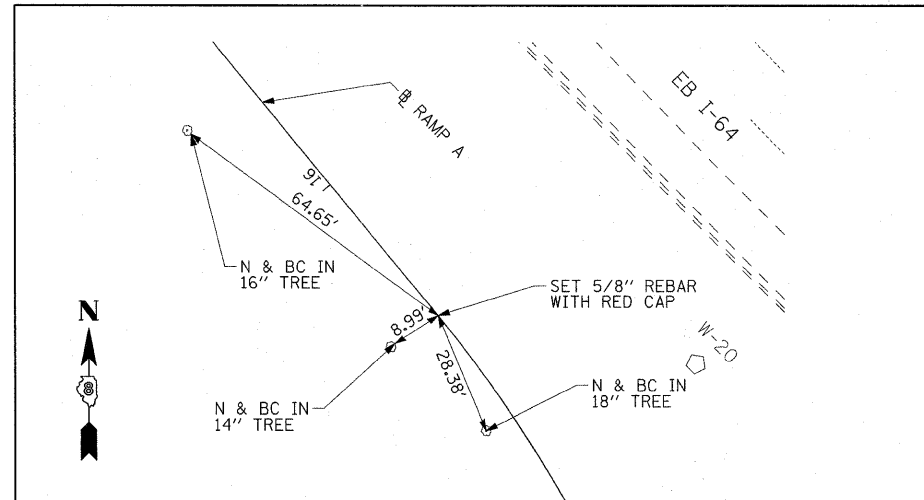
EB I-64
POT STA 28+70.41
SET MAG NAIL IN CHSLD "□" W/CHSLD "X"



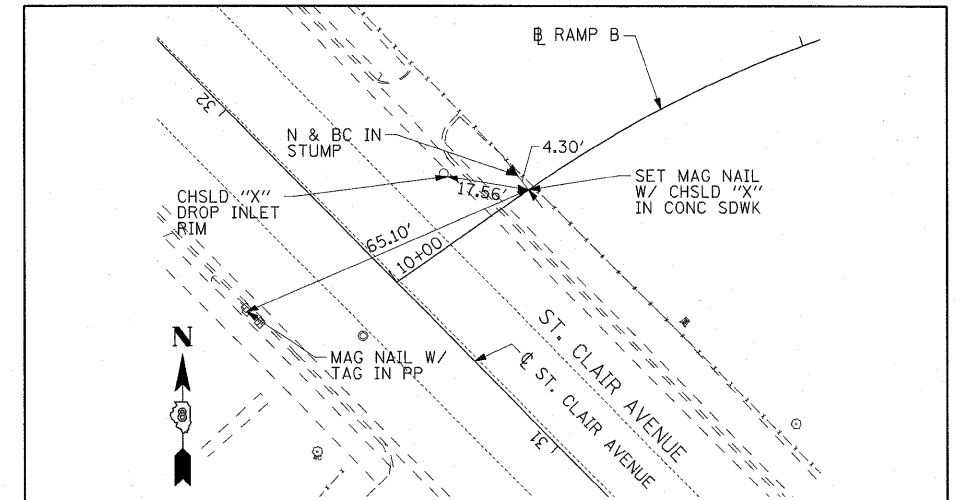
RAMP A
PT STA 10+30.50
SET 5/8" I. PIN W/ RED CAP



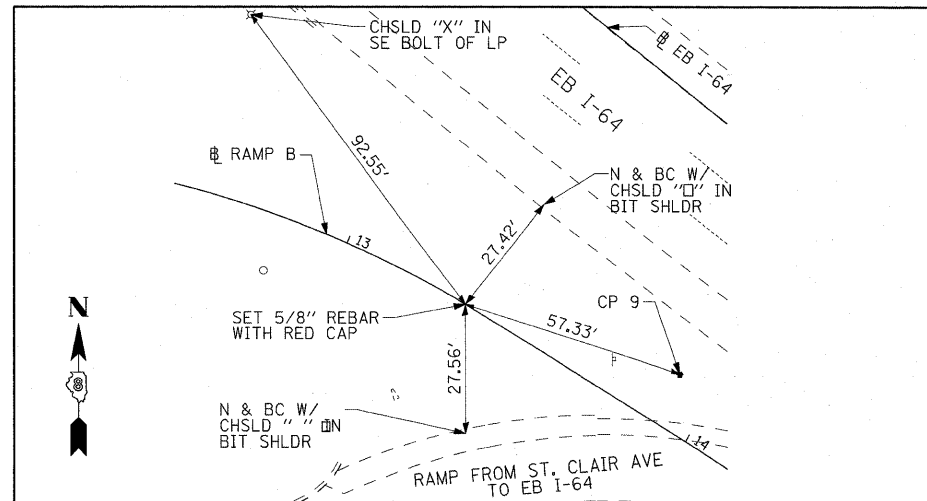
RAMP A
PT STA 16+36.03
SET 5/8" REBAR W/ RED CAP



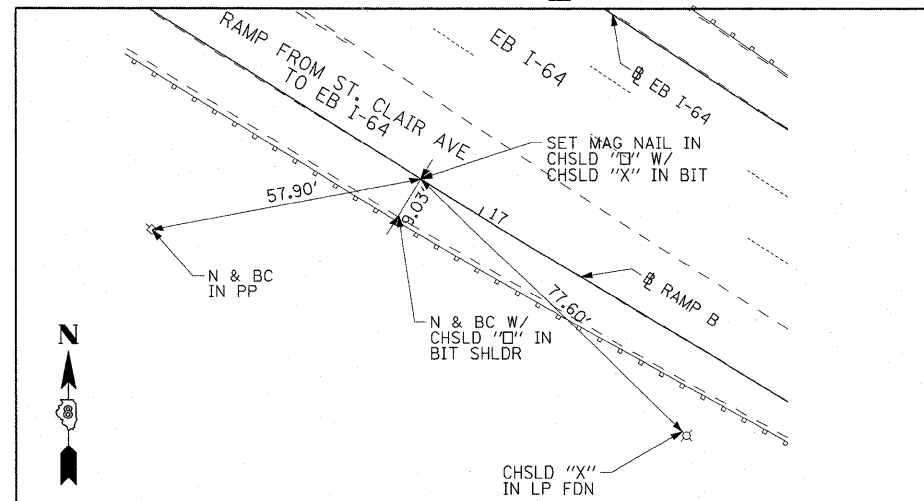
RAMP B
PT STA 10+34.18
SET MAG NAIL W/CHSLD "X" IN CONC



RAMP B
PT STA 13+34.17
SET 5/8" REBAR W/ RED CAP



RAMP B
PT STA 16+85.54
SET MAG NAIL IN CHSLD "□" W/CHSLD "X"



| | | | | | | | | | | | | |
|-------------|----------------------------|------------------------|-----------|---|---------------------------------------|------|---------|---|---------|-----------|--------------|-----------|
| FILE NAME = | USER NAME = jentzt | DESIGNED - CRH | REVISED - | STATE OF ILLINOIS DEPARTMENT OF TRANSPORTATION | ALIGNMENT, TIES AND BENCHMARKS | | | F.A.J. RTE. | SECTION | COUNTY | TOTAL SHEETS | SHEET NO. |
| #FILE# | PLOT SCALE = 20,000' / IN. | DRAWN - CRH | REVISED - | | | | | 55/64 | 82-1L | ST. CLAIR | 60 | 13 |
| | PLOT DATE = 12/29/2010 | CHECKED - DBM | REVISED - | | | | | CONTRACT NO. 76C54 | | | | |
| | | DATE - JANUARY 4, 2011 | REVISED - | | | | | FED. ROAD DIST. NO. ILLINOIS FED. AID PROJECT | | | | |
| | | | | SCALE: | SHEET NO. 7 OF 7 SHEETS | STA. | TO STA. | | | | | |