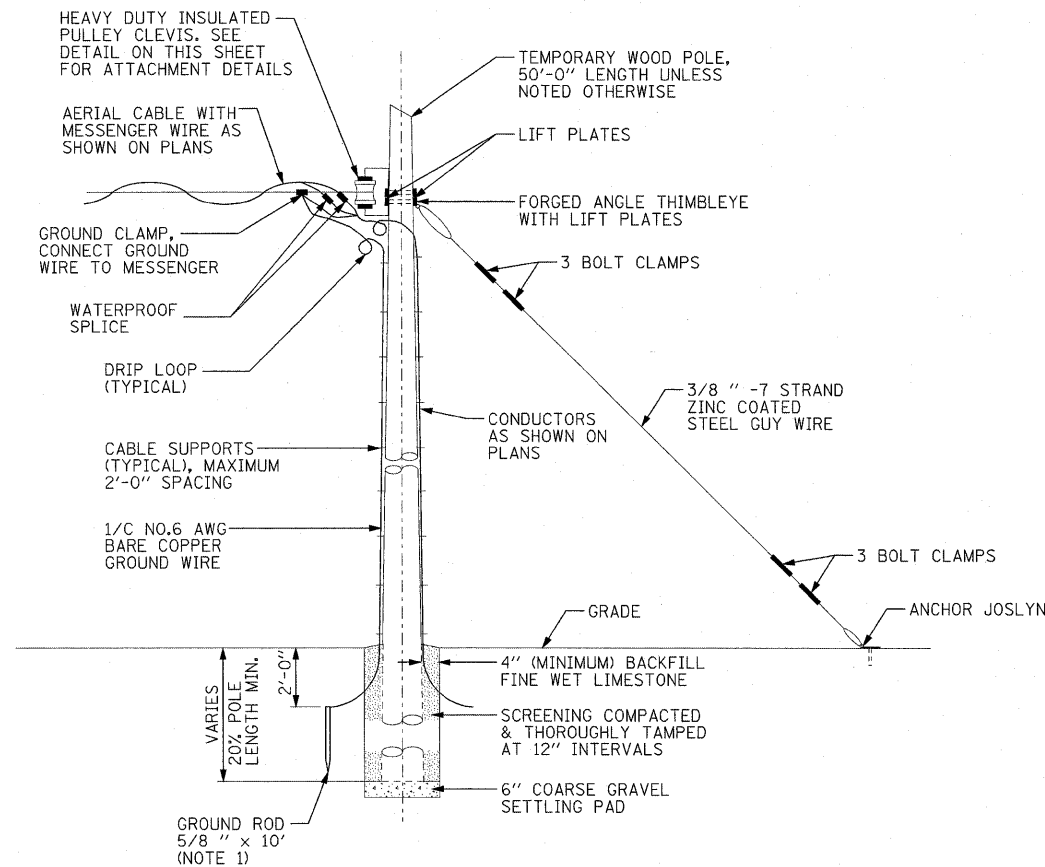
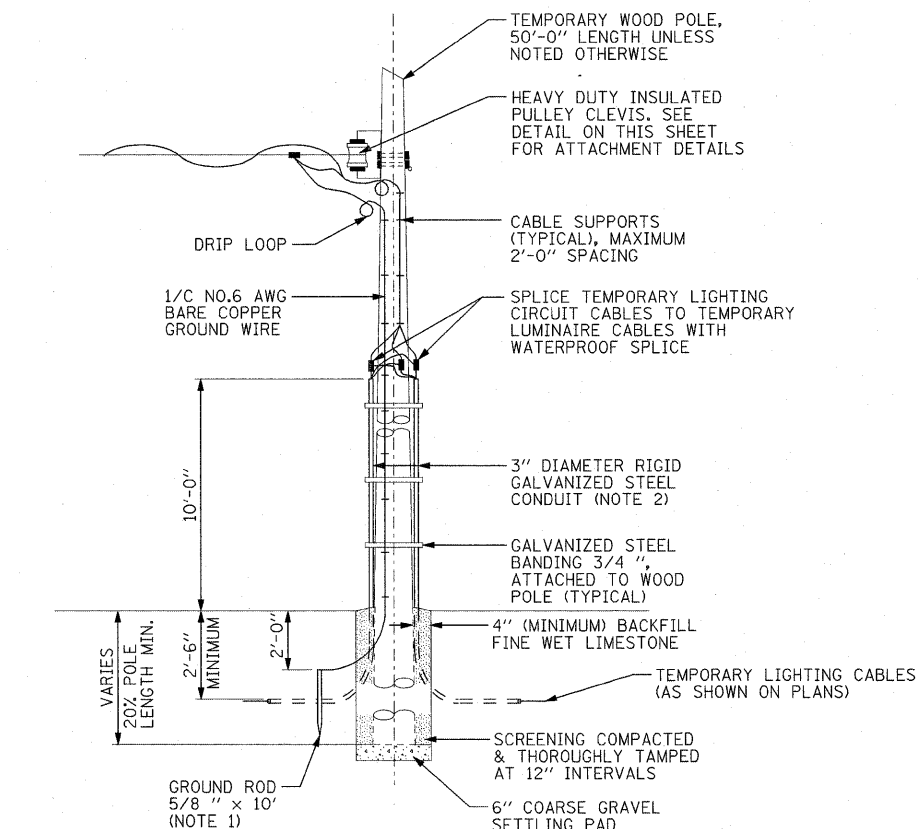


NOTES:

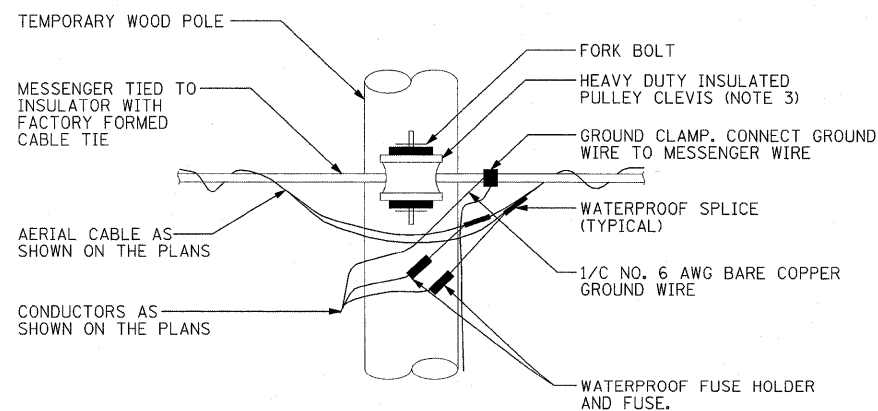
- GROUND RODS SHALL BE INSTALLED FOR ALL TEMPORARY WOOD POLES PER SECTION 806 OF THE STANDARDS.
- RIGID STEEL CONDUIT ATTACHED TO TEMPORARY WOOD POLE, PROVIDE A CONDUIT SEALING BUSHING. THE BUSHING MUST BE AS MANUFACTURED BY O-Z GEDNEY, TYPE CSBG OR APPROVED EQUAL. THE CONDUIT INCLUDING ALL FITTINGS, BUSHINGS, SUPPORT STRAPS AND HARDWARE WILL BE INCLUDED IN THE COST OF THE ITEM FOR WHICH IT WILL BE INSTALLED.
- HEAVY DUTY INSULATED PULLEY CLEVIS AND ALL ASSOCIATED HARDWARE REQUIRED FOR A COMPLETE INSTALLATION WILL BE INCLUDED FOR PAYMENT IN THE COST OF THE ITEM FOR WHICH IT WAS INSTALLED.
- WOOD POLES SHALL BE INSTALLED PER SECTION 830.03 OF THE STANDARDS.



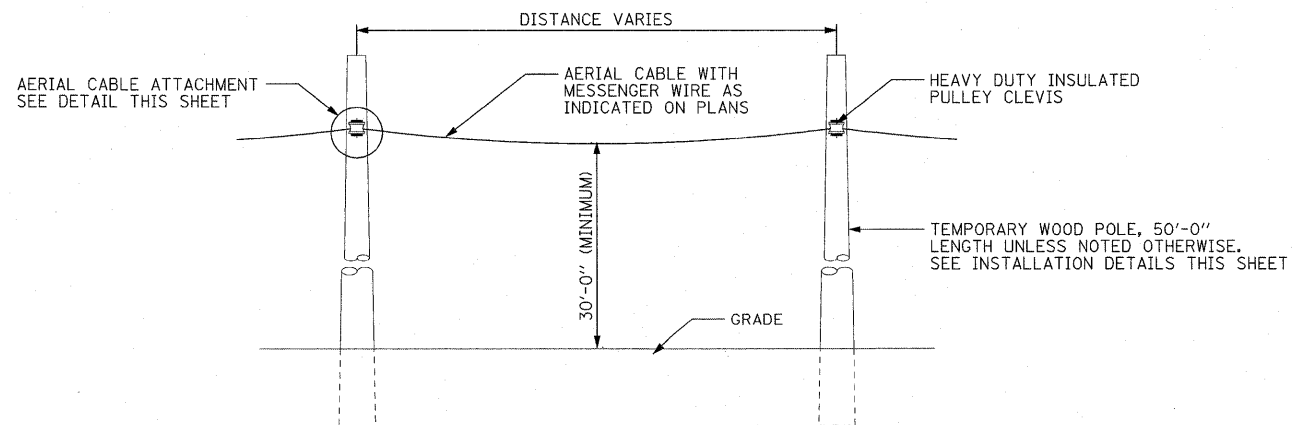
TEMPORARY WOOD END POLE INSTALLATION DETAILS
WOOD POLE INSTALLATION IS SIMILAR (NOT TO SCALE)



TEMPORARY POWER TO MAINLINE TEMPORARY LIGHTING UNIT INSTALLATION DETAIL
(NOT TO SCALE)



TEMPORARY WOOD POLE AERIAL CABLE ATTACHMENT DETAIL
(NOT TO SCALE)



AERIAL CABLE INSTALLATION DETAIL
(NOT TO SCALE)

FILE NAME =	USER NAME = lortzt	DESIGNED - WDS	REVISED -	STATE OF ILLINOIS DEPARTMENT OF TRANSPORTATION	TEMPORARY POWER AND WOOD POLE DETAILS	F.A.T. RTE.	SECTION	COUNTY	TOTAL SHEETS	SHEET NO.	
#FILES#	PLOT SCALE = 1.0000' / IN.	DRAWN - TL	REVISED -			55/64	82-1L	ST. CLAIR	60	33	
	PLOT DATE = 12/30/2010	CHECKED - JPC	REVISED -			CONTRACT NO. 76C54					
		DATE - JANUARY 4, 2011	REVISED -			FED. ROAD DIST. NO. ILLINOIS FED. AID PROJECT					
SCALE: NONE						SHEET NO. 1 OF 1 SHEETS		STA. N/A		TO STA. N/A	