

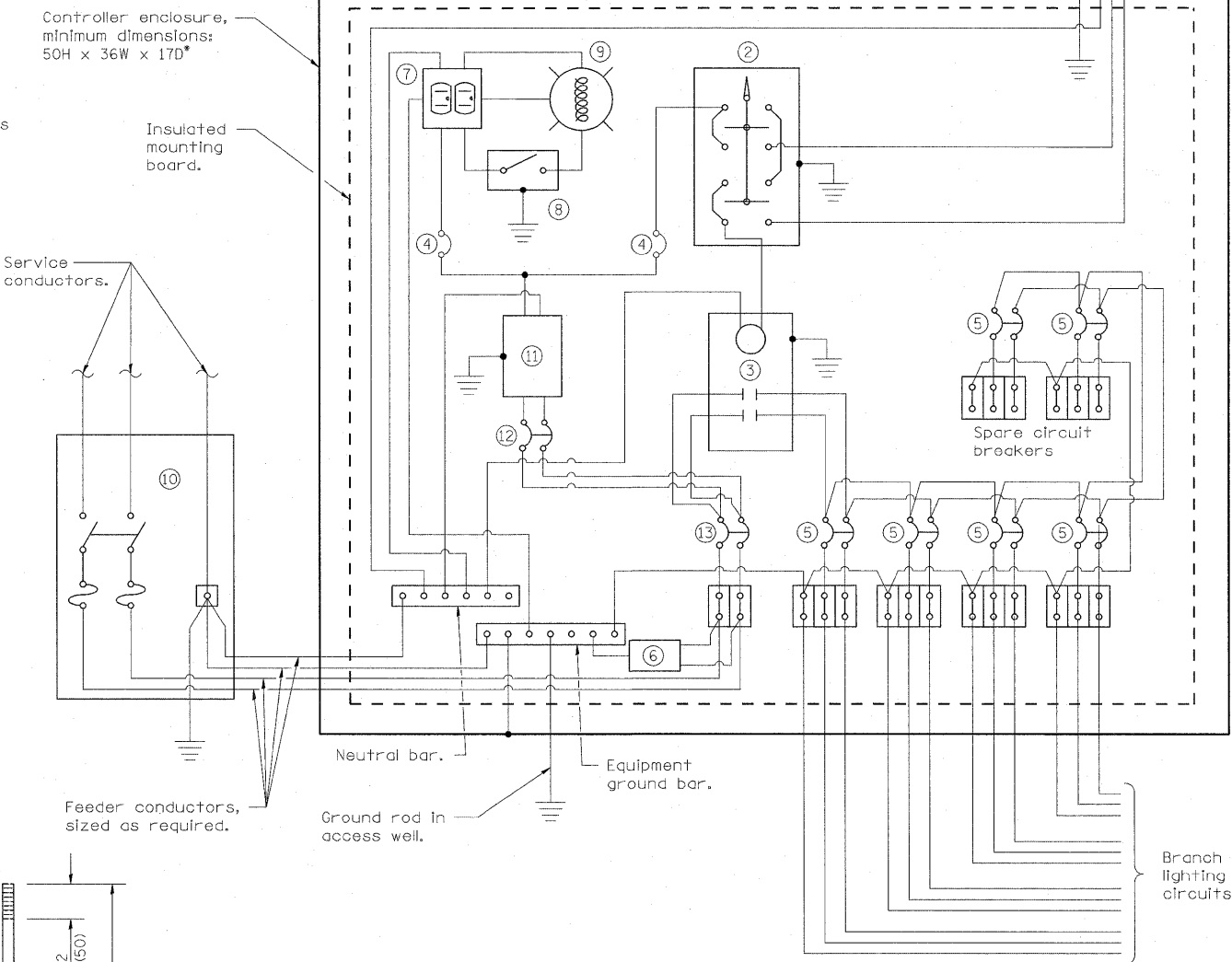
ELECTRIC SERVICE INSTALLATION

- * Size larger as needed.
- ** Or as directed by Utility Company.
- *** When cold sequencing is required, provide a meter disconnect switch as directed by Utility Company.

LIGHTING CONTROLLER

FOUNDATION (PLAN)
(Work pad not shown.)

**ANCHOR ROD
DETAIL**



CONTROL SCHEMATIC

- ① Photocell with integral surge arrester.
 - ② HAND-OFF-AUTO selector switch.
 - ③ 200 amp*, electrically held contactor.
 - ④ 15 amp, 1-pole circuit breaker.
 - ⑤ 50 amp*, 2-pole circuit breaker (six total including 2 spares).
 - ⑥ Surge arrester.
 - ⑦ GFCI duplex receptacle.
 - ⑧ Single-pole, single-throw switch.
 - ⑨ Incandescent luminaire, enclosed and gasketed with 100 watt lamp.
 - ⑩ Service disconnect switch - 2-pole, 3-wire, 200 amp*, fused at 200 amp*, solid neutral in NEMA 4X enclosure having lockable external handle.
 - ⑪ Transformer - 3KVA*, 480V primary, 120/240V secondary, single-phase, 60Hz.
 - ⑫ 15 amp, 2-pole circuit breaker.
 - ⑬ 200 amp*, 2-pole circuit breaker.
- * Size larger as needed.

All dimensions are in inches (millimeters) unless otherwise shown.

| | | | | | | | | | | | |
|-------------|-------------------|------------------------|-----------|---|---|---|---------|-----------|--------------|-----------|--|
| FILE NAME = | USER NAME = lantz | DESIGNED - WDS | REVISED - | STATE OF ILLINOIS DEPARTMENT OF TRANSPORTATION | LIGHTING CONTROLLER BASE MOUNTED, 480V | F.A.J. RTE. | SECTION | COUNTY | TOTAL SHEETS | SHEET NO. | |
| #FILE# | | DRAWN - TL | REVISED - | | | 55/64 | 82-1L | ST. CLAIR | 60 | 34 | |
| | | CHECKED - JPC | REVISED - | | | CONTRACT NO. 76C54 | | | | | |
| | | DATE - JANUARY 4, 2011 | REVISED - | | | FED. ROAD DIST. NO. ILLINOIS FED. AID PROJECT | | | | | |
| | | | | SCALE: | | SHEET NO. 1 OF 1 SHEETS | | STA. | TO STA. | | |