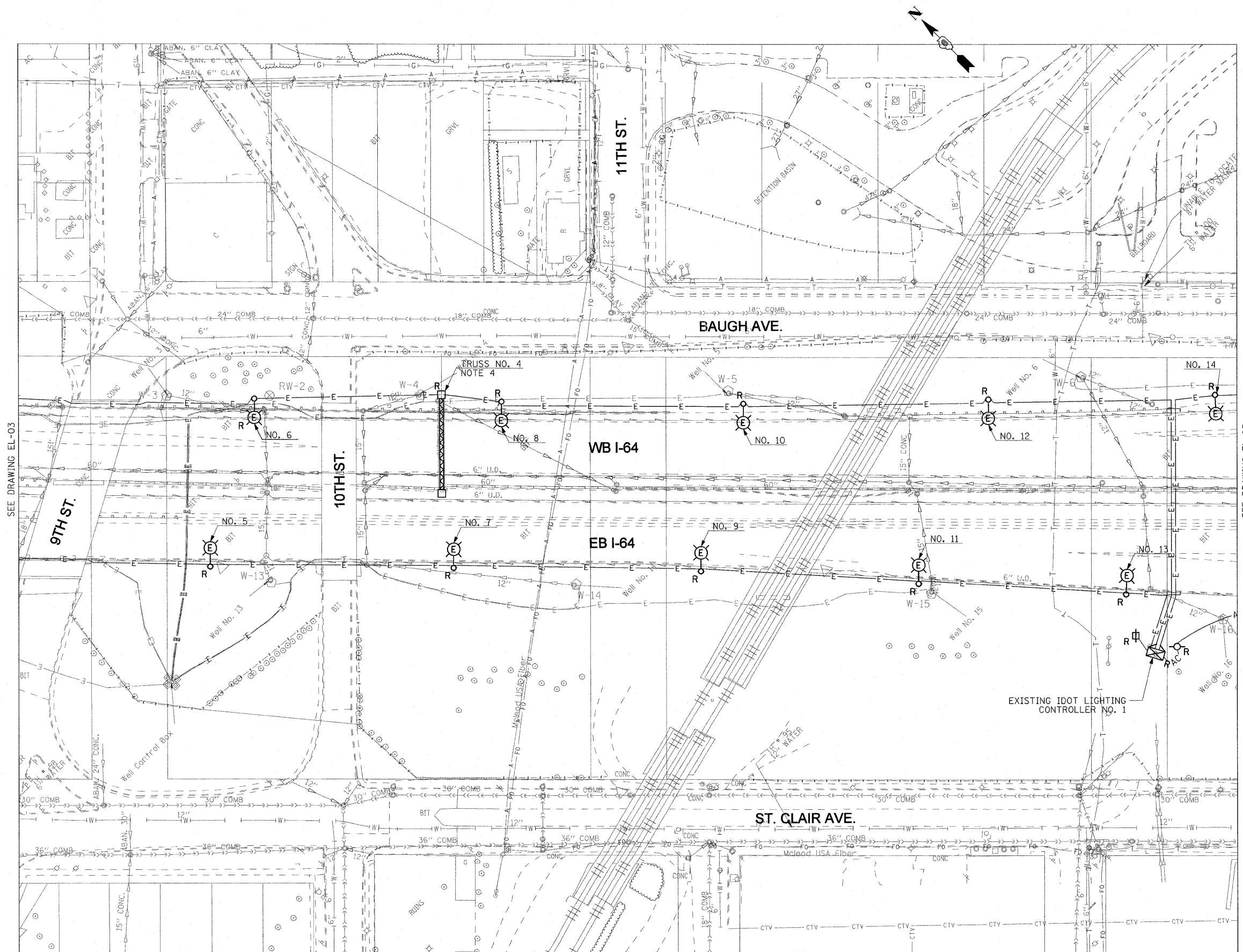


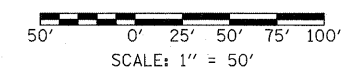
**NOTES:**

- SEE DRAWING ME-01 FOR ELECTRICAL SYMBOLS AND ABBREVIATIONS.
- THE EXISTING ROADWAY LIGHTING SYSTEM, WHICH INCLUDES TEMPORARY LIGHTING, SHALL REMAIN IN OPERATION UNTIL THE PROPOSED ROADWAY LIGHTING SYSTEM HAS BEEN INSTALLED, ENERGIZED, TESTED AND ACCEPTED BY THE ENGINEER, UNLESS NOTED OTHERWISE.
- COORDINATE ALL WORK WITH IDOT CONTRACT NOS. 76C49, 76C50, 76C51, 76C52, 76C53, 76C55, 76C75, AND 76C76.
- DISCONNECT THE EXISTING SIGN LIGHTING ELECTRICAL FEED AND REMOVE THE CABLES BACK TO THE NEAREST SPLICE POINT. SIGN LUMINAIRES AND ALL ELECTRICAL EQUIPMENT ATTACHED TO THE SIGN STRUCTURE WILL BE REMOVED WITH THE STRUCTURE BY OTHERS IN CONTRACT 76C52.



SEE DRAWING EL-03

SEE DRAWING EL-05



EL-04

FILE NAME = #FILE#	USER NAME = lantz	DESIGNED - WDS	REVISED -	<b>STATE OF ILLINOIS DEPARTMENT OF TRANSPORTATION</b>	<b>LIGHTING PLANS EXISTING CONDITIONS AND DEMOLITION</b>			F.A.I. RTE. 55/64	SECTION 82-1L	COUNTY ST. CLAIR	TOTAL SHEETS 60	SHEET NO. 40
	PLOT SCALE = 50.0001' / IN.	DRAWN - TL	REVISED -		SCALE: 1"=50'	SHEET NO. 3 OF 8 SHEETS	STA. 27+90.81 TO STA. 39+90.78	CONTRACT NO. 76C54				
	PLOT DATE = 12/28/2010	CHECKED - JPC	REVISED -		FED. ROAD DIST. NO.	ILLINOIS FED. AID PROJECT						
		DATE - JANUARY 4, 2011	REVISED -									