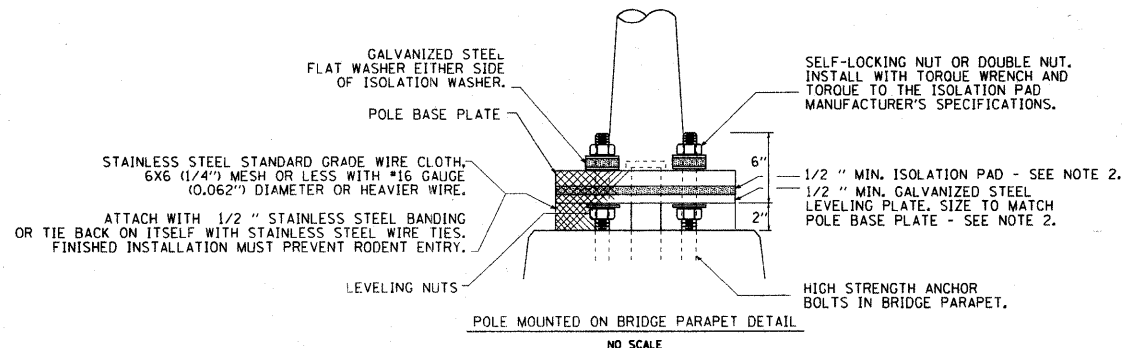


ELECTRICAL GENERAL NOTES

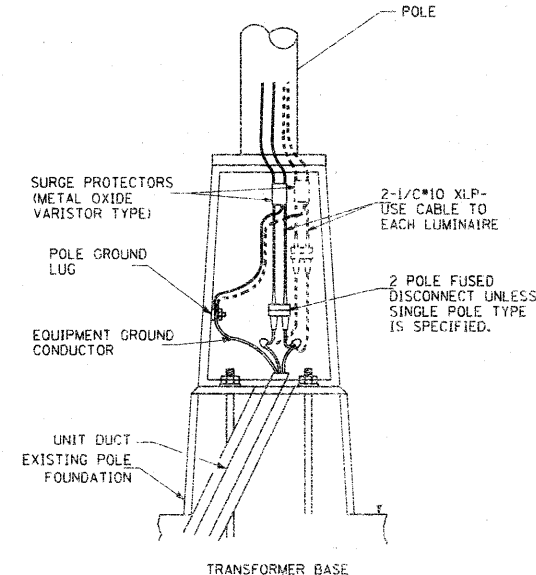
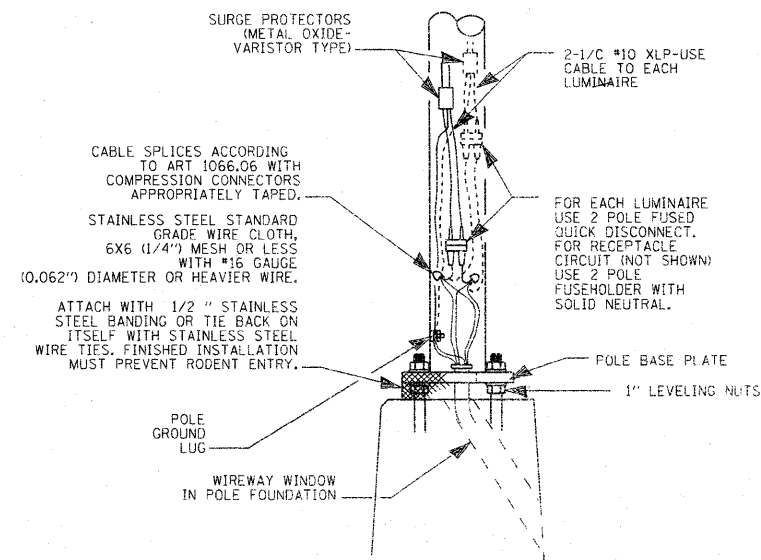
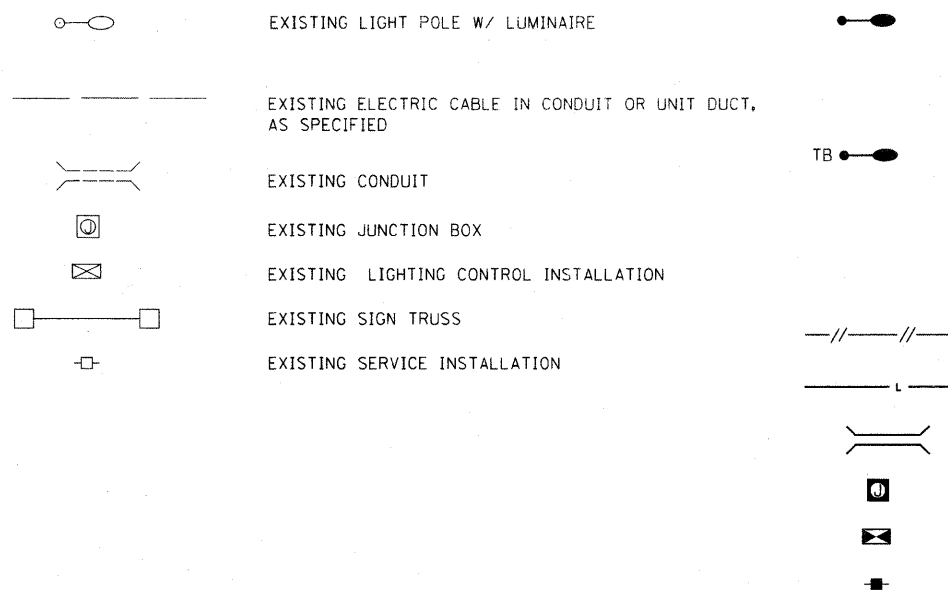
1. THE MANUFACTURER OF THE LIGHT FIXTURE SHALL BE REQUIRED TO SUPPLY AN AIMING DEVICE TO ADJUST THE LUMINAIRES TO THEIR CORRECT ANGLE. MOUNTING ANGLES ARE BASED ON THE EVALUATION OF THE FOUNDATION LEVEL WITH THE ROADWAY.
2. NO ADDITIONAL COMPENSATION WILL BE ALLOWED FOR REQUIRED VERTICAL LUMINAIRE MOUNTING ANGLE ADJUSTMENT DURING FINAL INSPECTION.
3. THE CONTRACTOR SHALL FIELD VERIFY EXISTING BOLT PATTERNS, DIAMETERS AND THREAD COUNTS. THE COST OF HARDWARE REQUIRED FOR MOUNTING LIGHT POLES ON EXISTING FOUNDATIONS SHALL BE INCLUDED IN THE CONTRACT UNIT PRICE FOR LIGHT POLES.
4. A SURGE PROTECTOR SHALL BE INSTALLED IN EACH LIGHT POLE. THE SURGE PROTECTOR SHALL BE WIRED AS SHOWN IN THE WIRING SCHEMATICS. LIGHT POLE UNIT PRICE SHALL INCLUDE THIS ITEM AND WORK.
5. ALL LUMINAIRES SHALL BE 480 VOLTS.
6. THE COST OF THE POLE IDENTIFICATION SIGN PANEL SHALL BE INCLUDED IN THE PRICE OF THE LIGHT POLE.
7. THE CONTRACTOR SHALL COORDINATE HIS CONSTRUCTION ACTIVITIES WITH WORK TO BE PERFORMED ON PROJECTS BY OTHER CONTRACTORS. THERE SHOULD ALSO BE COOPERATION OF CONSTRUCTION ACTIVITIES BETWEEN CONTRACTORS.
8. ALL LUMINAIRES SHALL HAVE TYPE 3 DISTRIBUTION.
9. WHERE LIGHT POLES ARE MOUNTED ON BRIDGE PARAPETS, THE SPACE BETWEEN THE CONCRETE AND THE POLE PLATE SHALL BE COVERED WITH STAINLESS STEEL MESH AND BAND CLAMPS, AFTER THE POLES ARE PLUMB TO THE SATISFACTION OF THE ENGINEER. THE STAINLESS STEEL MESH AND BAND CLAMPS SHALL BE INCLUDED IN THE UNIT COST OF PROVIDING THE POLE. THIS REQUIREMENT ALSO APPLIES TO LIGHT POLES INSTALLED ON FOUNDATIONS LOCATED BETWEEN CONCRETE BARRIERS.
10. CONDUCTOR SPLICES SHALL BE IN POLE BASES OR JUNCTION BOXES. SPLICES BELOW GRADE WILL NOT BE PERMITTED.
11. ILLINOIS STATE LAW REQUIRES A 48 HOUR NOTICE BE GIVEN TO UTILITIES BEFORE DIGGING. FIELD MARKING OF FACILITIES MAY BE OBTAINED BY CONTACTING J.U.L.I.E. OR FOR NON-MEMBERS, THE UTILITY COMPANY DIRECTLY. AGENCIES KNOWN TO HAVE FACILITIES WITHIN THE PROJECT AREA ARE AS FOLLOWS:
 - ALTON & SOUTHERN RAILWAY (COMMUNICATIONS)
 - AMEREN IP (ELECTRIC & GAS)
 - AMEREN UE (ELECTRIC & GAS)
 - AT&T (COMMUNICATIONS)
 - BUCKEYE PARTNERS L.P.-WOOD RIVER PIPELINE (PIPELINE)
 - CENTERPOINT ENERGY (PIPELINE)
 - ILLINOIS AMERICAN WATER COMPANY (WATER)
 - PAETEC/MCLEOD USA TELECOMMUNICATIONS, INC. (COMMUNICATIONS)
 - MEDIACOM LLC CENTRAL (CABLE TV)
 - TERMINAL RAILROAD ASSOCIATION OF ST. LOUIS (COMMUNICATIONS)
12. UNDERGROUND MARKING TAPE SHALL BE INSTALLED WITH ALL TRENCH AND BACKFILL FOR ELECTRICAL WORK IN ACCORDANCE WITH ARTICLES 819.05 AND 1066.05 OF THE STANDARD SPECIFICATIONS.
13. COORDINATION WITH THE DEPARTMENT'S BUREAU OF OPERATIONS IS REQUIRED BEFORE TRENCHING TO LOCATE HIGHWAY LIGHTING/PUMPING/ITS FACILITIES AND TO COORDINATE OTHER FIELD ACTIVITIES.
14. NO OVER NIGHT LANE CLOSURES SHALL BE PERMITTED.
15. ALL UTILITIES AND DRAINAGE STRUCTURES SHALL BE LOCATED IN THE FIELD PRIOR TO ANY ATTEMPT TO INSTALL ELECTRIC CABLE. THE COST FOR LOCATING DRAINAGE STRUCTURES SHALL BE INCLUDED IN THE UNIT PRICE FOR TRENCH AND BACKFILL FOR ELECTRICAL WORK.



GENERAL NOTES

1. THE VIBRATION ISOLATION PAD AND LEVELING PLATE SHALL MATCH THE FOOTPRINT OF THE POLE BASE PLATE.
2. THICKNESS OF ISOLATION PAD AND WASHERS SHALL BE ACCORDING TO THE ISOLATION PAD MANUFACTURER'S RECOMMENDATIONS BASED UPON POLE HEIGHT AND LOADING.
3. SHOULD THE LENGTH OF THE EXPOSED ANCHOR BOLTS BE TOO SHORT ON AN EXISTING BRIDGE TO MOUNT THE POLES AS SHOWN, THEN THE LEVELING PLATE SHALL BE MOUNTED DIRECTLY ON THE CONCRETE AND LEVELLED WITH STAINLESS STEEL WASHERS. REMOVE CONCRETE AS DIRECTED BY THE ENGINEER TO FULLY THREAD THE TOP NUT.

LEGEND



WIRING DETAIL

NO SCALE

GENERAL NOTES

- ALL TAPED SPLICES SHALL USE 2 LAYERS OF ELECTRICAL TAPE OVER 3 LAYERS OF RUBBER TAPE AS REQUIRED BY THE STANDARD SPECIFICATIONS. COAT THE FINISHED TAPED SPLICE WITH BONDING COMPOUND.
- ALL CABLE SPLICES SHALL BE TAPED UNLESS ANOTHER METHOD HAS BEEN SPECIFICALLY APPROVED BY THE ENGINEER.
- FOR EXAMPLE PURPOSES THE POLE IS SHOWN ON AN ANCHOR BASE. IF THE POLE IS REQUIRED TO BE SET ON A BREAKAWAY BASE, CONSULT THE STANDARD SPECIFICATIONS.
- ALL DIMENSIONS ARE IN MILLIMETERS (INCHES) UNLESS OTHERWISE SHOWN.

PROPOSED LIGHT POLE, ALUMINUM, 45 FT. M.H., 4 FT. MAST ARM AND LUMINAIRE, SODIUM VAPOR, HORIZONTAL MOUNT, 400 WATT PARAPET MOUNTED, W/REMOVAL OF EXISTING LIGHTING UNIT, SALVAGE

PROPOSED LIGHT POLE, ALUMINUM, 50 FT. M.H., 8 FT. MAST ARM, BREAKAWAY DEVICE, TRANSFORMER BASE, 15 INCH BOLT CIRCLE AND LUMINAIRE, SODIUM VAPOR, HORIZONTAL MOUNT, 400 WATT W/ REMOVAL OF EXISTING LIGHTING UNIT, SALVAGE, REMOVAL OF POLE FOUNDATION & LIGHT POLE FOUNDATION, 30\"/>

PROPOSED ELECTRIC CABLE IN CONDUIT, 600V (XLP-TYPE USE) 3-1/2 NO. 6

PROPOSED ELECTRIC CABLE IN TRENCH, SERVICE, NO. 6 3 C

PROPOSED PUSHED CONDUIT

PROPOSED JUNCTION BOX

PROPOSED LIGHTING CONTROL INSTALLATION

PROPOSED SERVICE INSTALLATION

FILE NAME =	USER NAME = prestonne	DESIGNED -	REVISD -	STATE OF ILLINOIS DEPARTMENT OF TRANSPORTATION	ELECTRICAL GENERAL NOTES, LEGEND AND POLE DETAILS		F.A.J. RTE.	SECTION	COUNTY	TOTAL SHEETS	SHEET NO.	
ci:\pw\work\p1dot\prestonne\108239232\1576669\plan-T5.dgn	PLOT SCALE = 50.0000' / IN.	DRAWN -	REVISD -		SCALE: _____	SHEET NO. _____ OF _____ SHEETS	STA. _____ TO STA. _____	64	82-11-2-314-1	SI CLAIR	16	5
	PLOT DATE = 3/30/2011	CHECKED -	REVISD -					CONTRACT NO. 76E59				
		DATE -	REVISD -					FED. ROAD DIST. NO. _____ ILLINOIS FED. AID PROJECT				