

F.A.I. RTE.	SECTION	COUNTIES	TOTAL SHEETS	SHEET NO.
64	82-(1,2,3)L-1	ST. CLAIR	16	1
FED. ROAD DIST. NO.	ILLINOIS	CONTRACT NO. 76E59		

**STATE OF ILLINOIS
DEPARTMENT OF TRANSPORTATION
DIVISION OF HIGHWAYS**

**PROPOSED
HIGHWAY PLANS**

**F.A.I. ROUTE 64
SECTION 82-(1,2,3)L-1**

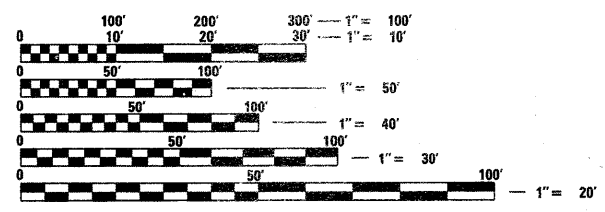
**ST. CLAIR COUNTY
VARIOUS LIGHTING EQUIPMENT
REPLACEMENT LOCATIONS
BETWEEN 18TH ST. AND
R.R. BRIDGE E. OF I-255**

C-98-018-11

**INDEX OF SHEETS
SEE SHEET 2**

STANDARDS

- | | | |
|-----------|-----------|-----------|
| 664001-02 | 701106-02 | 701400-05 |
| 701406-06 | 701446-02 | 701456-01 |
| 701501-06 | 701701-07 | 701901-01 |
| 836001 | 825026-01 | |
| 701411-07 | 701401-07 | 701404-07 |
| 701801-04 | | |



FULL SIZE PLANS HAVE BEEN PREPARED USING STANDARD ENGINEERING SCALES. REDUCED SIZED PLANS WILL NOT CONFORM TO STANDARD SCALES. IN MAKING MEASUREMENTS ON REDUCED PLANS, THE ABOVE SCALES MAY BE USED.

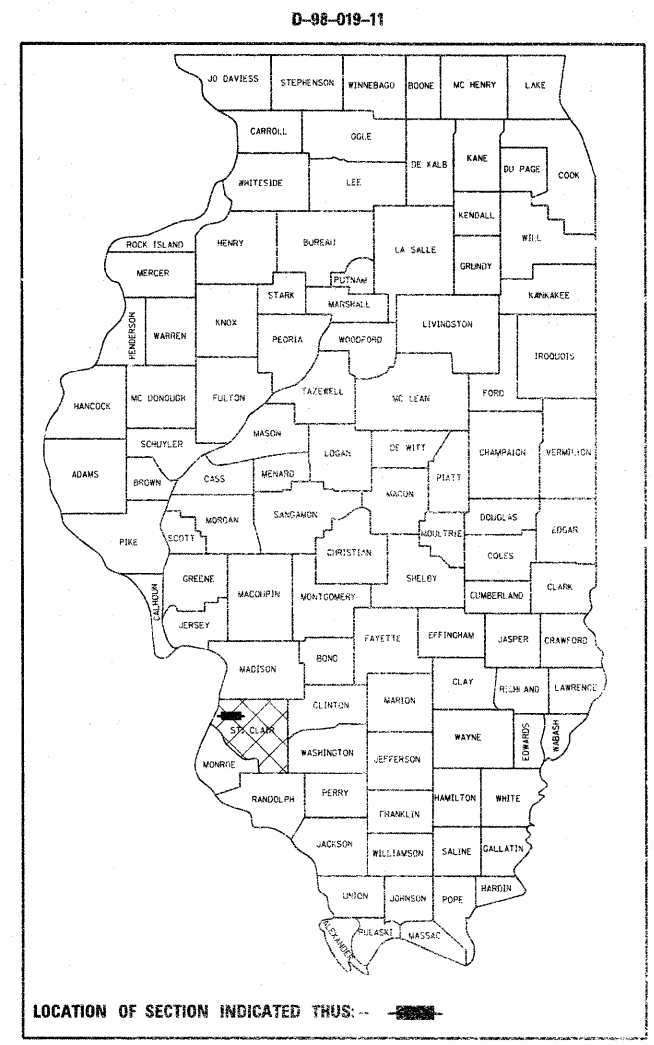
J.U.L.I.E.
JOINT UTILITY LOCATION INFORMATION FOR EXCAVATION
1-800-892-0123
OR 811

**PROJECT ENGINEER: PATTI LEBEAU (618) 346-3179
SQUAD LEADER: MICHAEL PRESTON (618) 346-3143**

CONTRACT NO. 76E59

SEE SHEET 2 FOR LOCATION MAP

PROJECT BEGINS AT I-64 STATION 87+65
PROJECT ENDS AT I-64 STATION 245+20
NET LENGTH = 15,760 FT. = 3.0 MILES



STATE OF ILLINOIS
DEPARTMENT OF TRANSPORTATION
DIVISION OF HIGHWAYS

SUBMITTED March 31 20 11

Mass C. Jamel
DEPUTY DIRECTOR OF HIGHWAYS, REGION 5 ENGINEER

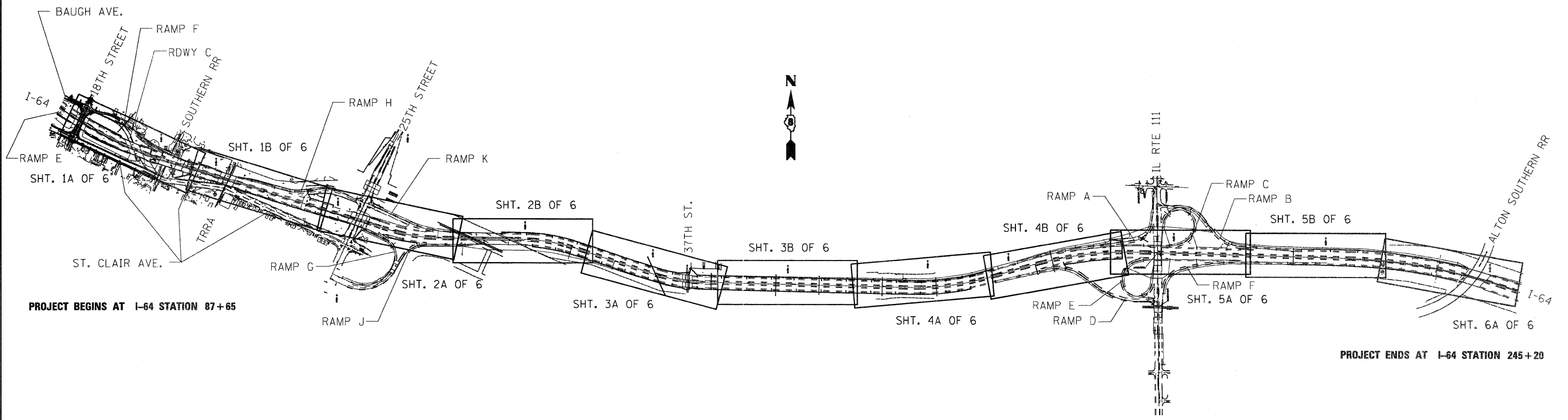
May 13 20 11

Scott E. Stett, P.E.
Acting ENGINEER OF DESIGN AND ENVIRONMENT

May 13 20 11

Christine M. Reed
DIRECTOR OF HIGHWAYS, CHIEF ENGINEER

**PRINTED BY THE AUTHORITY
OF THE STATE OF ILLINOIS**

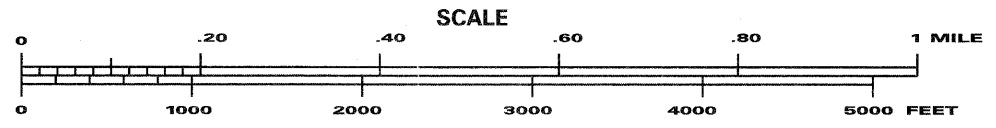


PROJECT BEGINS AT I-64 STATION 87+65

PROJECT ENDS AT I-64 STATION 245+20

INDEX OF SHEETS

1. COVER
2. LOCATION MAP
3. SUMMARY OF QUANTITIES
4. PLAN SHEET LAYOUTS AND TRAFFIC CONTROL & PROTECTION AND TRAFFIC VOLUME SCHEDULES
5. ELECTRICAL GENERAL NOTES, LEGEND AND POLE DETAILS
- 6-8. ELECTRIC CABLE, UNIT DUCT, POLE AND LUMINAIRE SCHEDULES 1-3 OF 3
9. SIGN PANEL DETAILS & DETAIL FOR NIGHTTIME LIGHTING INSPECTION
- 10-15. CONTROLLERS #2 - #5 SHTS. 1-6 OF 6 LIGHTING PLAN
16. WIRING DIAGRAMS

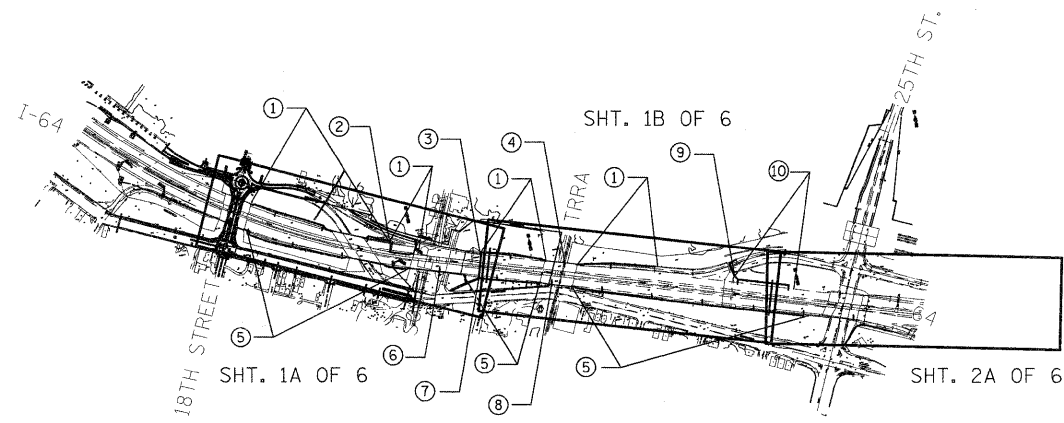


FILE NAME =	USER NAME = prestonme	DESIGNED -	REVISED -	STATE OF ILLINOIS DEPARTMENT OF TRANSPORTATION	LOCATION MAPS	F.A.I RTE.	SECTION	COUNTY	TOTAL SHEETS	SHEET NO.
or\pwork\puidot\prestonme\d8239232\d876a59-plen-TS.dgn		DRAWN -	REVISED -			64	82-1(2,3)1-1	ST. CLAIR	16	2
PLOT SCALE = 50.0000' / IN.		CHECKED -	REVISED -			CONTRACT NO. 76E59				
PLOT DATE = 3/30/2011		DATE -	REVISED -			SCALE: _____ SHEET NO. ____ OF ____ SHEETS STA. _____ TO STA. _____			FED. ROAD DIST. NO. _____ ILLINOIS FED. AID PROJECT	

SUMMARY OF QUANTITIES

SUMMARY OF QUANTITIES			100% STATE CONSTRUCTION TYPE CODE 0021				
CODE NO	ITEM	UNIT	URBAN TOTAL QUANTITIES	CONTROLLER*			
				2	3	4	5
66400305	CHAIN LINK FENCE, 6'	FOOT	37			37	
66407400	CHAIN LINK GATES, 6' X 8' DOUBLE	EACH	1			1	
67000400	ENGINEER'S FIELD OFFICE, TYPE A	CAL MO	5	1.25	.50	2.25	1
67100100	MOBILIZATION	L SUM	1	.25	.25	.25	.25
70100700	TRAFFIC CONTROL AND PROTECTION, STANDARD 701406	L SUM	1	.44	.28		.28
70100815	TRAFFIC CONTROL AND PROTECTION, STANDARD 701446	L SUM	1				1
70100825	TRAFFIC CONTROL AND PROTECTION, STANDARD 701456	L SUM	1	.20	.40		.40
70102620	TRAFFIC CONTROL AND PROTECTION, STANDARD 701501	L SUM	1			1	
70102635	TRAFFIC CONTROL AND PROTECTION, STANDARD 701701	L SUM	1	.50	.50		
80300100	LOCATING UNDERGROUND CABLE	FOOT	21410	5155		11320	4935
80400100	ELECTRIC SERVICE INSTALLATION	EACH	1			1	
81012500	CONDUIT IN TRENCH, 1 1/2" DIA., PVC	FOOT	10			10	
81018500	CONDUIT PUSHED, 2" DIA., GALVANIZED STEEL	FOOT	370	95		70	205
81100582	CONDUIT ATTACHED TO STRUCTURE, 1 1/4" DIA., ALUMINUM	FOOT	895	755			140
81300310	JUNCTION BOX, STAINLESS STEEL, ATTACHED TO STRUCTURE, 8" X 6" X 4"	EACH	9	8			1
81702415	ELECTRIC CABLE IN CONDUIT, 600V (XLP-TYPE USE) 3-1/C NO. 6	FOOT	1459	1294		20	145
81702450	ELECTRIC CABLE IN CONDUIT, 600V (XLP-TYPE USE) 3-1/C NO. 10	FOOT	400	400			
81900200	TRENCH AND BACKFILL FOR ELECTRICAL WORK	FOOT	21410	5155		11320	4935
82102400	LUMINAIRE, SODIUM VAPOR, HORIZONTAL MOUNT, 400 WATT	EACH	84	21	5	40	18
82500360	LIGHTING CONTROLLER, BASE MOUNTED, 480VOLT, 100AMP	EACH	1			1	
83009100	LIGHT POLE, ALUMINUM, 45 FT. M.H., 4 FT. MAST ARM	EACH	6	3	2		1
83010300	LIGHT POLE, ALUMINUM, 50 FT. M.H., 8 FT. MAST ARM	EACH	78	18	3	40	17
83600300	LIGHT POLE FOUNDATION, 30" DIAMETER	FOOT	546	126	21	280	119
83800205	BREAKAWAY DEVICE, TRANSFORMER BASE, 15 INCH BOLT CIRCLE	EACH	78	18	3	40	17
84200500	REMOVAL OF LIGHTING UNIT, SALVAGE	EACH	84	21	5	40	18
84200804	REMOVAL OF POLE FOUNDATION	EACH	78	18	3	40	17
84500110	REMOVAL OF LIGHTING CONTROLLER	EACH	1			1	
84500120	REMOVAL OF ELECTRIC SERVICE INSTALLATION	EACH	1			1	

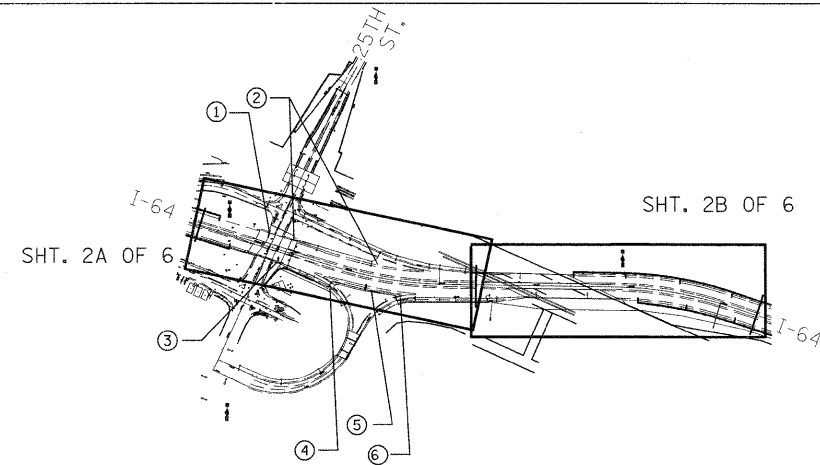
SUMMARY OF QUANTITIES			100% STATE CONSTRUCTION TYPE CODE 0021				
CODE NO	ITEM	UNIT	URBAN TOTAL QUANTITIES	CONTROLLER*			
				2	3	4	5
84500130	REMOVAL OF LIGHTING CONTROLLER FOUNDATION	EACH	1			1	
87300815	ELECTRIC CABLE IN TRENCH, SERVICE, NO. 6 3 C	FOOT	21410	5155		11320	4935
89502300	REMOVE ELECTRIC CABLE FROM CONDUIT	FOOT	1567	1352		70	145
X6640300	CHAIN LINK FENCE REMOVAL	FOOT	45			45	
X7240311	RELOCATE EXISTING SIGN PANEL (SPECIAL)	EACH	15	4	3	6	2
Z0048665	RAILROAD PROTECTIVE LIABILITY INSURANCE	L SUM	1	.50	.50		
X0327260	BARBED WIRE FENCE, THREE STRAND	FOOT	45			45	
X8130125	REMOVE EXISTING JUNCTION BOX	EACH	9	8			1
X6010005	SHOULDER REMOVAL AND REPLACEMENT FOR ELECTRICAL WORK	FOOT	120			120	
X6640304	CHAIN LINK FENCE TO BE REMOVED AND RE-ERECTED	FOOT	20				20



- WB MAINLINE BEHIND GUARDRAIL
- WB CONDUIT PUSH STA. 96+76
- WB CONDUIT PUSH STA. 101+60
- WB RR BRIDGE PARAPET STA. 105+80
- EB MAINLINE BEHIND GUARDRAIL
- EB RR BRIDGE PARAPET STA. 99+48
- EB CONDUIT PUSH STA. 101+60
- EB RR BRIDGE PARAPET STA. 105+43
- RAMP H CONDUIT PUSH STA. 6+65
- WB MAINLINE

STANDARDS	CONTROLLER #2 SHTS. 1A-2A OF 6 TC & P LOCATIONS												TOTAL
	1	2	3	4	5	6	7	8	9	10	11	12	
OFF-RD OPERATIONS, MULTILANE, 15' (4.5 m) TO 24" (600 mm) 701101	X	X	X	X	X	X	X	X	X	X	X	X	
OFF-RD OPERATIONS, MULTILANE, MORE THAN 15' (4.5 m) AWAY 701106	X	X	X	X	X	X	X	X	X	X	X	X	
APPROACH TO LANE CLOSURE, FREEWAY/EXPRESSWAY 701400	X	X	X	X	X	X	X	X	X	X	X	X	
LANE CLOSURE, FREEWAY/EXPRESSWAY, DAY OPERATIONS ONLY 701406						.22		.22					.44
TWO LANE CLOSURE FREEWAY/EXPRESSWAY 701446													
PARTIAL EXIT RAMP CLOSURE FREEWAY/EXPRESSWAY 701456									.20				.20
URBAN LANE CLOSURE, MULTILANE INTERSECTION 701701													

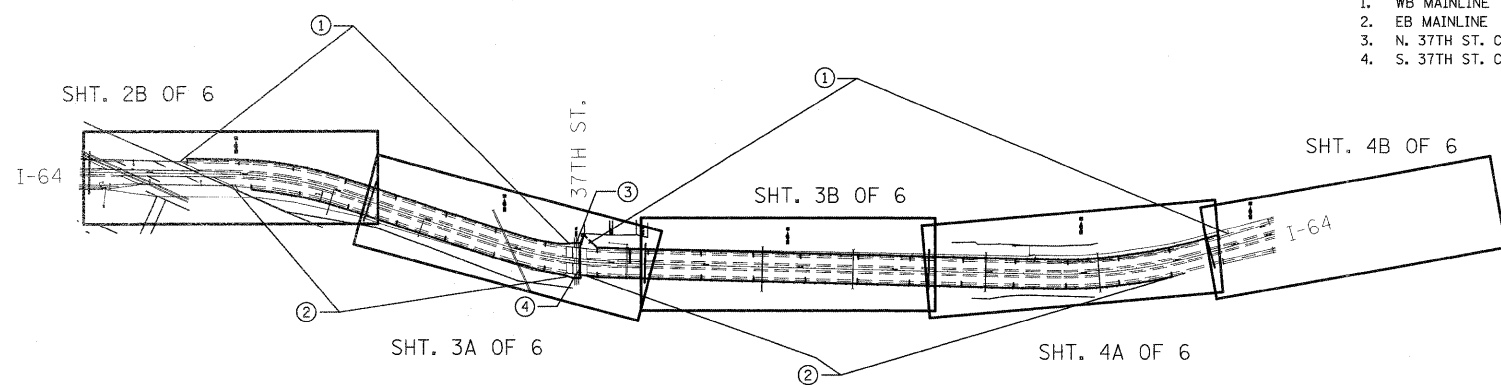
TRAFFIC VOLUME LOCATIONS	2010 ADT EST.	SUZ	MUZ
I-64 WB MAIN LINE, 25TH ST. RAMP K TO 18TH ST BRIDGE	704400	2.8	9.7
25TH ST. RAMP H	3300	4.6	1.5
25TH ST. RAMP F	1350	1.5	0.8
I-64 EB MAIN LINE, 18TH ST BRIDGE TO 25TH ST. RAMP G	70400	2.8	9.7



- WB 25TH BRIDGE PARAPET STA. 121+50
- WB MAINLINE
- EB 25TH BRIDGE PARAPET STA. 121+50
- RAMP G CONDUIT PUSH STA. 4+70
- EB MAINLINE
- RAMP J CONDUIT PUSH STA. 12+20

STANDARDS	CONTROLLER #3 SHTS. 2A-2B OF 6 TC & P LOCATIONS												TOTAL
	1	2	3	4	5	6	7	8	9	10	11	12	
OFF-RD OPERATIONS, MULTILANE, 15' (4.5 m) TO 24" (600 mm) 701101	X	X	X	X	X	X							
OFF-RD OPERATIONS, MULTILANE, MORE THAN 15' (4.5 m) AWAY 701106	X	X	X	X	X	X							
APPROACH TO LANE CLOSURE, FREEWAY/EXPRESSWAY 701400	X		X	X		X							
LANE CLOSURE, FREEWAY/EXPRESSWAY, DAY OPERATIONS ONLY 701406	.14		.14										.28
TWO LANE CLOSURE FREEWAY/EXPRESSWAY 701446													
PARTIAL EXIT RAMP CLOSURE FREEWAY/EXPRESSWAY 701456					.20		.20						.40
URBAN LANE CLOSURE, MULTILANE INTERSECTION 701701	.50		.50										1.00

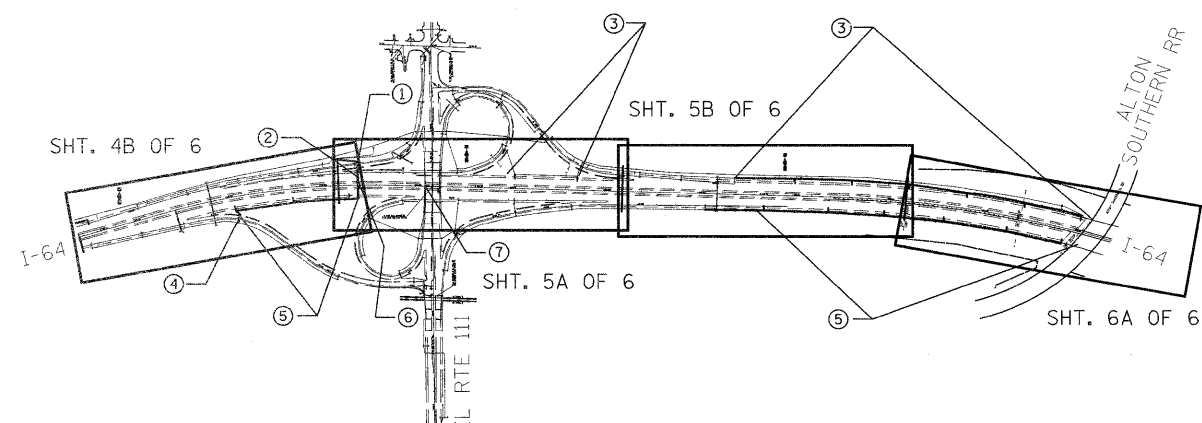
TRAFFIC VOLUME LOCATIONS	2010 ADT EST.	SUZ	MUZ
I-64 WB MAIN LINE, 25TH ST. RAMP G TO 59TH ST. RAMP A	67300	2.6	10.2
I-64 EB MAIN LINE, 25TH ST. RAMP G TO 59TH ST. RAMP D	67300	2.2	10.2
25TH ST. RAMP G	2650	4.8	1.2
25TH ST. RAMP J	1600	1.3	0.6
25TH ST. NB & SB	7200	NA	NA



- WB MAINLINE
- EB MAINLINE
- N. 37TH ST. CONDUIT PUSH
- S. 37TH ST. CONDUIT PUSH

STANDARDS	CONTROLLER #4 SHTS. 2B-4B OF 6 TC & P LOCATIONS												TOTAL
	1	2	3	4	5	6	7	8	9	10	11	12	
OFF-RD OPERATIONS, MULTILANE, 15' (4.5 m) TO 24" (600 mm) 701101	X	X	X	X									
OFF-RD OPERATIONS, MULTILANE, MORE THAN 15' (4.5 m) AWAY 701106	X	X	X	X									
APPROACH TO LANE CLOSURE, FREEWAY/EXPRESSWAY 701400													
LANE CLOSURE, FREEWAY/EXPRESSWAY, DAY OPERATIONS ONLY 701406													
PARTIAL EXIT RAMP CLOSURE FREEWAY/EXPRESSWAY 701456													
URBAN LANE CLOSURE, 2L, 2W, UNDIVIDED 701501			.50	.50									1.00

TRAFFIC VOLUME LOCATIONS	2010 ADT EST.	SUZ	MUZ
I-64 WB MAIN LINE, 25TH ST. RAMP G TO 59TH ST. RAMP A	67300	2.6	10.2
I-64 EB MAIN LINE, 25TH ST. RAMP G TO 59TH ST. RAMP D	67300	2.6	10.2
37TH ST. NB & SB	4100	NA	NA



- RAMP A CONDUIT PUSH STA. 7+90
- WB CONDUIT PUSH STA. 207+10
- WB MAINLINE
- RAMP D CONDUIT PUSH STA. 5+10
- EB MAINLINE
- EB CONDUIT PUSH STA. 207+10
- W/ SB IL 111 BRIDGE CONDUIT
- SB IL 111 BRIDGE PARAPET

STANDARDS	CONTROLLER #5 SHTS. 4B-6A OF 6 TC & P LOCATIONS												TOTAL
	1	2	3	4	5	6	7	8	9	10	11	12	
OFF-RD OPERATIONS, MULTILANE, 15' (4.5 m) TO 24" (600 mm) 701101	X	X	X	X	X	X	X						
OFF-RD OPERATIONS, MULTILANE, MORE THAN 15' (4.5 m) AWAY 701106	X	X	X	X	X	X	X						
APPROACH TO LANE CLOSURE, FREEWAY/EXPRESSWAY 701400	X					X	X						
LANE CLOSURE, FREEWAY/EXPRESSWAY, DAY OPERATIONS ONLY 701406			.09			.09	.10						.28
TWO LANE CLOSURE FREEWAY/EXPRESSWAY 701446		.50				.50							1.00
PARTIAL EXIT RAMP CLOSURE FREEWAY/EXPRESSWAY 701456	.20			.20									.40

TRAFFIC VOLUME LOCATIONS	2010 ADT EST.	SUZ	MUZ
I-64 WB MAIN LINE, 59TH ST. RAMP A TO RR BRIDGE	59400	4.4	8.7
I-64 EB MAIN LINE, 59TH ST. RAMP D TO RR BRIDGE	59400	4.4	8.7
IL 111 ST. RAMP A	1800	1.1	0.6
IL 111 ST. RAMP D	4700	1.9	1.9

FILE NAME =	USER NAME = prestonme	DESIGNED -	REVISED -
cs:\pw\work\p\dot\prestonme\d0239232\d076e59-plan-TS.dgn		DRAWN -	REVISED -
		CHECKED -	REVISED -
		DATE -	REVISED -

**STATE OF ILLINOIS
DEPARTMENT OF TRANSPORTATION**

**PLAN SHEET LAYOUTS AND
TRAFFIC CONTROL & PROTECTION AND TRAFFIC VOLUME SCHEDULES**

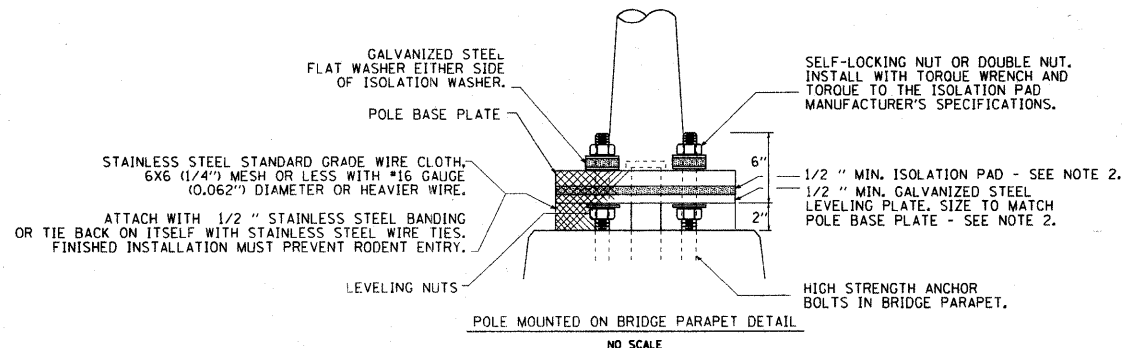
F.A.I. RTE.	SECTION	COUNTY	TOTAL SHEETS	SHEET NO.
64	82-(1,2,3)I-1	ST CLAIR	16	4
CONTRACT NO. 76E59				

SCALE: SHEET NO. OF SHEETS STA. TO STA.

FED. ROAD DIST. NO. ILLINOIS FED. AID PROJECT

ELECTRICAL GENERAL NOTES

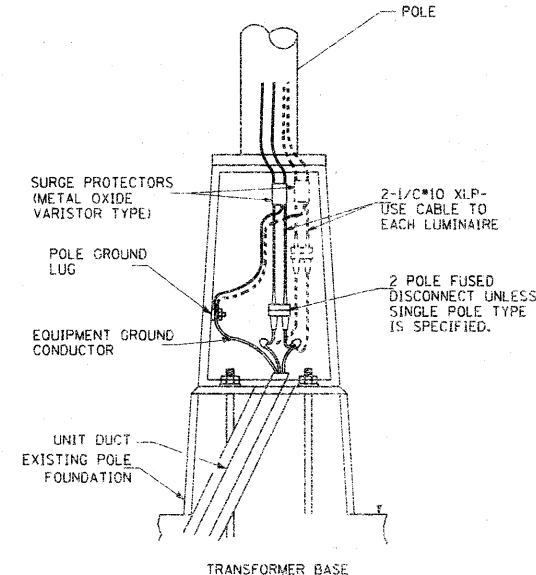
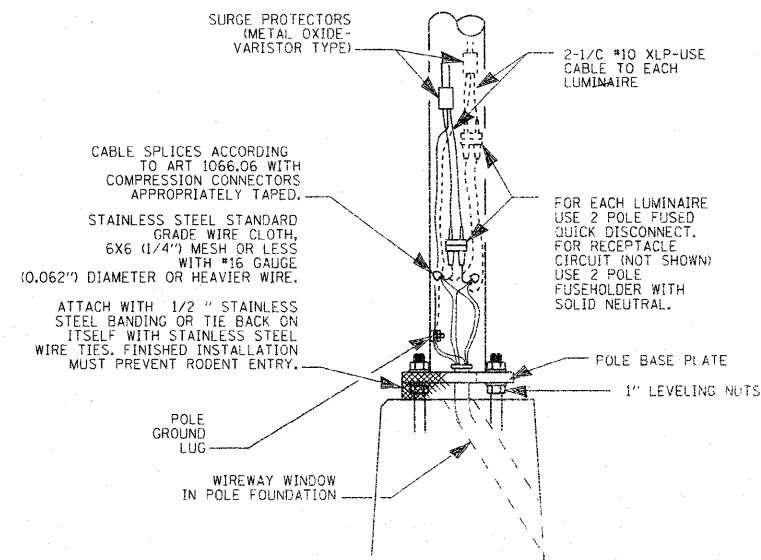
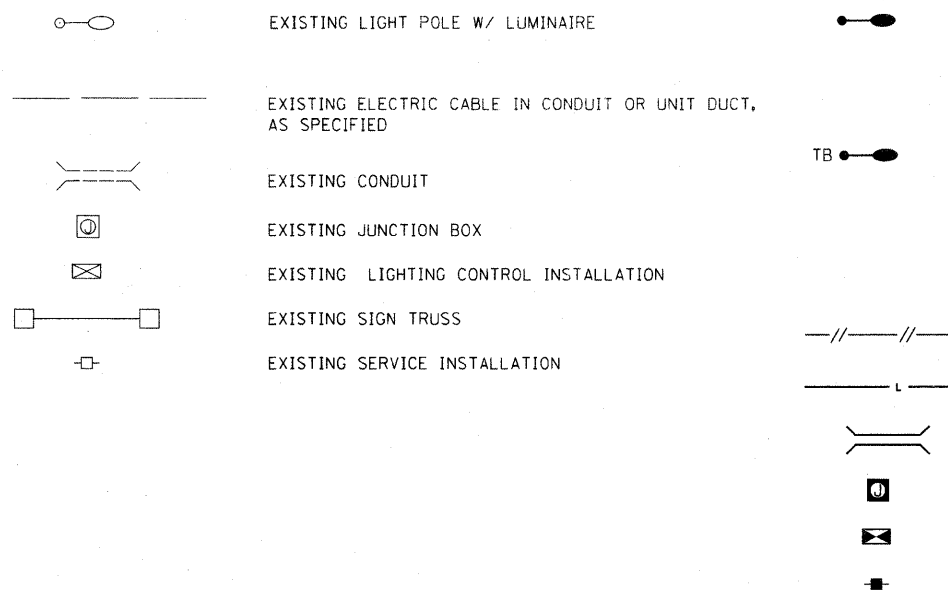
- THE MANUFACTURER OF THE LIGHT FIXTURE SHALL BE REQUIRED TO SUPPLY AN AIMING DEVICE TO ADJUST THE LUMINAIRES TO THEIR CORRECT ANGLE. MOUNTING ANGLES ARE BASED ON THE EVALUATION OF THE FOUNDATION LEVEL WITH THE ROADWAY.
- NO ADDITIONAL COMPENSATION WILL BE ALLOWED FOR REQUIRED VERTICAL LUMINAIRE MOUNTING ANGLE ADJUSTMENT DURING FINAL INSPECTION.
- THE CONTRACTOR SHALL FIELD VERIFY EXISTING BOLT PATTERNS, DIAMETERS AND THREAD COUNTS. THE COST OF HARDWARE REQUIRED FOR MOUNTING LIGHT POLES ON EXISTING FOUNDATIONS SHALL BE INCLUDED IN THE CONTRACT UNIT PRICE FOR LIGHT POLES.
- A SURGE PROTECTOR SHALL BE INSTALLED IN EACH LIGHT POLE. THE SURGE PROTECTOR SHALL BE WIRED AS SHOWN IN THE WIRING SCHEMATICS. LIGHT POLE UNIT PRICE SHALL INCLUDE THIS ITEM AND WORK.
- ALL LUMINAIRES SHALL BE 480 VOLTS.
- THE COST OF THE POLE IDENTIFICATION SIGN PANEL SHALL BE INCLUDED IN THE PRICE OF THE LIGHT POLE.
- THE CONTRACTOR SHALL COORDINATE HIS CONSTRUCTION ACTIVITIES WITH WORK TO BE PERFORMED ON PROJECTS BY OTHER CONTRACTORS. THERE SHOULD ALSO BE COOPERATION OF CONSTRUCTION ACTIVITIES BETWEEN CONTRACTORS.
- ALL LUMINAIRES SHALL HAVE TYPE 3 DISTRIBUTION.
- WHERE LIGHT POLES ARE MOUNTED ON BRIDGE PARAPETS, THE SPACE BETWEEN THE CONCRETE AND THE POLE PLATE SHALL BE COVERED WITH STAINLESS STEEL MESH AND BAND CLAMPS, AFTER THE POLES ARE PLUMB TO THE SATISFACTION OF THE ENGINEER. THE STAINLESS STEEL MESH AND BAND CLAMPS SHALL BE INCLUDED IN THE UNIT COST OF PROVIDING THE POLE. THIS REQUIREMENT ALSO APPLIES TO LIGHT POLES INSTALLED ON FOUNDATIONS LOCATED BETWEEN CONCRETE BARRIERS.
- CONDUCTOR SPLICES SHALL BE IN POLE BASES OR JUNCTION BOXES. SPLICES BELOW GRADE WILL NOT BE PERMITTED.
- ILLINOIS STATE LAW REQUIRES A 48 HOUR NOTICE BE GIVEN TO UTILITIES BEFORE DIGGING. FIELD MARKING OF FACILITIES MAY BE OBTAINED BY CONTACTING J.U.L.I.E. OR FOR NON-MEMBERS, THE UTILITY COMPANY DIRECTLY. AGENCIES KNOWN TO HAVE FACILITIES WITHIN THE PROJECT AREA ARE AS FOLLOWS:
 - ALTON & SOUTHERN RAILWAY (COMMUNICATIONS)
 - AMEREN IP (ELECTRIC & GAS)
 - AMEREN UE (ELECTRIC & GAS)
 - AT&T (COMMUNICATIONS)
 - BUCKEYE PARTNERS L.P.-WOOD RIVER PIPELINE (PIPELINE)
 - CENTERPOINT ENERGY (PIPELINE)
 - ILLINOIS AMERICAN WATER COMPANY (WATER)
 - PAETEC/MCLEOD USA TELECOMMUNICATIONS, INC. (COMMUNICATIONS)
 - MEDIACOM LLC CENTRAL (CABLE TV)
 - TERMINAL RAILROAD ASSOCIATION OF ST. LOUIS (COMMUNICATIONS)
- MEMBERS OF J.U.L.I.E. PHONE 811 OR (800) - 892-0123 ARE INDICATED BY *). NON-J.U.L.I.E. MEMBERS MUST BE NOTIFIED INDIVIDUALLY.
- UNDERGROUND MARKING TAPE SHALL BE INSTALLED WITH ALL TRENCH AND BACKFILL FOR ELECTRICAL WORK IN ACCORDANCE WITH ARTICLES 819.05 AND 1066.05 OF THE STANDARD SPECIFICATIONS.
- COORDINATION WITH THE DEPARTMENT'S BUREAU OF OPERATIONS IS REQUIRED BEFORE TRENCHING TO LOCATE HIGHWAY LIGHTING/PUMPING/ITS FACILITIES AND TO COORDINATE OTHER FIELD ACTIVITIES.
- NO OVER NIGHT LANE CLOSURES SHALL BE PERMITTED.
- ALL UTILITIES AND DRAINAGE STRUCTURES SHALL BE LOCATED IN THE FIELD PRIOR TO ANY ATTEMPT TO INSTALL ELECTRIC CABLE. THE COST FOR LOCATING DRAINAGE STRUCTURES SHALL BE INCLUDED IN THE UNIT PRICE FOR TRENCH AND BACKFILL FOR ELECTRICAL WORK.



GENERAL NOTES

- THE VIBRATION ISOLATION PAD AND LEVELING PLATE SHALL MATCH THE FOOTPRINT OF THE POLE BASE PLATE.
- THICKNESS OF ISOLATION PAD AND WASHERS SHALL BE ACCORDING TO THE ISOLATION PAD MANUFACTURER'S RECOMMENDATIONS BASED UPON POLE HEIGHT AND LOADING.
- SHOULD THE LENGTH OF THE EXPOSED ANCHOR BOLTS BE TOO SHORT ON AN EXISTING BRIDGE TO MOUNT THE POLES AS SHOWN, THEN THE LEVELING PLATE SHALL BE MOUNTED DIRECTLY ON THE CONCRETE AND LEVELED WITH STAINLESS STEEL WASHERS. REMOVE CONCRETE AS DIRECTED BY THE ENGINEER TO FULLY THREAD THE TOP NUT.

LEGEND



WIRING DETAIL

NO SCALE

GENERAL NOTES

- ALL TAPED SPLICES SHALL USE 2 LAYERS OF ELECTRICAL TAPE OVER 3 LAYERS OF RUBBER TAPE AS REQUIRED BY THE STANDARD SPECIFICATIONS. COAT THE FINISHED TAPED SPLICE WITH BONDING COMPOUND.
- ALL CABLE SPLICES SHALL BE TAPED UNLESS ANOTHER METHOD HAS BEEN SPECIFICALLY APPROVED BY THE ENGINEER.
- FOR EXAMPLE PURPOSES THE POLE IS SHOWN ON AN ANCHOR BASE. IF THE POLE IS REQUIRED TO BE SET ON A BREAKAWAY BASE, CONSULT THE STANDARD SPECIFICATIONS.
- ALL DIMENSIONS ARE IN MILLIMETERS (INCHES) UNLESS OTHERWISE SHOWN.

FILE NAME =	USER NAME = prestonne	DESIGNED -	REVISD -	STATE OF ILLINOIS DEPARTMENT OF TRANSPORTATION	ELECTRICAL GENERAL NOTES, LEGEND AND POLE DETAILS	F.A.J. RTE.	SECTION	COUNTY	TOTAL SHEETS	SHEET NO.	
ci:\pw\work\p1dot\prestonne\108239232\1576669\plan-T5.dgn	PLOT SCALE = 50.0000' / IN.	DRAWN -	REVISD -			64	82-11-2-314-1	SI CLAIR	16	5	
	PLOT DATE = 3/30/2011	CHECKED -	REVISD -			SCALE: _____ SHEET NO. _____ OF _____ SHEETS STA. _____ TO STA. _____		CONTRACT NO. 76E59			
		DATE -	REVISD -			FED. ROAD DIST. NO. _____ ILLINOIS FED. AID PROJECT					

CONTROLLER #2

CRKT#	FROM/TO	ELCBL T SERV 6 3C	EC C XLP USE 3-1C 6	REM ELCBL FR CON	CON P 2 GALVS	CON AT ST 1 1/4 ALUM	JUN BX SS AS 8X6X4	REM EX JB
2A	41	46						
2A	46	47						
2A	47	55						
2A	55	58						
2A	58	60						
2A	42	JB1						
2A	JB1	44	146					
2A	44	48	269					
2A	48	JB2	66	47			1	1
2A	JB2	JB3		168	168	165		
2A	JB3	54	41	27			1	1
2A	54	JB12	321		60			
2A	JB12	JB13		73	73			
2A	JB13	58		11	11			
2A	58	55						
2A	60	ST 10						
2A	ST 10	CNTRLR #2						
	EX. JB	43						
2B	43	45	254					
2B	45	49	269					
2B	49	JB4	51	27			1	1
2B	JB4	JB5		158	158	155		
2B	JB5	57	76	37			1	1
2B	57	JB6	101	27			1	1
2B	JB6	61		161	161			
2B	61	JB7		116	116	110	1	1
2B	JB7	CNTRLR #2	118	33				
2C	75	74						
2C	76	72	279		35			
2C	72	74	144					
2C	74	70						
2C	70	68						
2C	68	66	239					
2C	66	JB8	186	32				
2C	JB8	64		66	66	60		
2C	64	JB9		106	106	100		
2C	JB9	62	196	27				
2C	62	CNTRLR #2	453	8				
2D	77	73	274					
2D	73	71	279					
2D	71	69	279					
2D	69	67	279					
2D	67	JB10	166	27			1	1
2D	JB10	65	111	111	111	105		
2D	65	JB11	66	66	66	60		
2D	JB11	63	236	27				
2D	63	CNTRLR #2	258	258	8		1	1

CONTROLLER #3 (1 OF 2)

CRKT#	FROM/TO	ELCBL T SERV 6 3C	EC C XLP USE 3-1C 6	REM ELCBL FR CON	CON P 2 GALVS	CON AT ST 1 1/4 ALUM	JUN BX SS AS 8X6X4	REM EX JB
3A	127	128						
3A	128	126						
3A	120	121						
3A	121	122						
3A	122	78						
3A	78	79						
3A	79	CNTRLR #3						
3B	114	113						
3B	116	115						
3B	115	113						
3B	113	83						
3B	83	111						
3B	108	110						
3B	110	111						
3B	111	CNTRLR #3						
3C	96	94						
3C	94	ST 14						
3C	ST 14	92						
3C	125	124						
3C	124	123						
3C	123	81						
3C	81	82						
3C	82	86						
3C	86	90						
3C	92	90						
3C	90	88						
3C	88	84						
3C	80	112						
3C	119	112						
3C	112	118						
3C	118	117						
3C	112	118						
3C	118	84						
3C	84	CNTRLR #3						

CONTROLLER #2

CRKT#	POLE #	ROADWAY	STATION	REM LT UNIT SALV	LT P A 45MH 4MA	LT P A TB 50MH 8MA	LUM SV HOR MT 400W	REL EX SIGN PANEL SP
2A	41	PROP. RAMP F	400+62L					
2A	46	PROP. RAMP F	402+62L					
2A	47	EX. RAMP F	9+20R					
2A	55	EX. RAMP F	6+80R					
2A	58	WB. MAINLINE	98+10R					
2A	60	WB. MAINLINE	100+35R					
2A	38	WB. MAINLINE	85+00L					
2A	42	WB. MAINLINE	87+65L					
2A	44	WB. MAINLINE	90+44L	1		1	1	1
2A	48	WB. MAINLINE	92+95L	1		1	1	
2A	54	WB. MAINLINE	95+60L	1		1	1	
2A	55	EX. RAMP F	6+80R					
2A	58	WB. MAINLINE	98+10L					
2A	61	WB. MAINLINE	99+48L	1	1		1	1
2B	35	EX. RAMP E	0+50L					
2B	36	EX. RAMP E	2+00R					
2B	37	EX. RAMP E	3+80R					
2B	39	EX. RAMP E	6+20R					
2B	43	EX. RAMP E	8+75	1		1	1	1
2B	45	EB. MAINLINE	91+60	1		1	1	
2B	49	EB. MAINLINE	94+25	1		1	1	
2B	57	EB. MAINLINE	96+95L	1		1	1	
2B	59	ST. CLAIR AVE.	49+30L	1		1	1	
2C	62	WB. MAINLINE	103+10L	1		1	1	
2C	64	WB. MAINLINE	105+80	1	1		1	
2C	66	WB. MAINLINE	108+40	1		1	1	
2C	68	WB. MAINLINE	110+75L					
2C	70	WB. MAINLINE	112+80L					
2C	72	WB. MAINLINE	115+20L	1		1	1	
2C	74	RAMP H	6+35R					
2C	75	RAMP H	3+60R					
2C	76	WB. MAINLINE	117+90L	1		1	1	
2D	63	EB. MAINLINE	102+50R	1		1	1	
2D	65	EB. MAINLINE	105+43R	1	1		1	
2D	67	EB. MAINLINE	108+10R	1		1	1	
2D	69	EB. MAINLINE	110+75R	1		1	1	
2D	71	EB. MAINLINE	113+45R	1		1	1	
2D	73	EB. MAINLINE	116+15R	1		1	1	1
2D	77	EB. MAINLINE	118+82R	1		1	1	

CONTROLLER #3 (1 OF 2)

CRKT#	POLE #	ROADWAY	STATION	REM LT UNIT SALV	LT P A 45MH 4MA	LT P A TB 50MH 8MA	LUM SV HOR MT 400W	REL EX SIGN PANEL SP
3A	78	RAMP H	1+00R					
3A	79	25TH ST.	21+45L					
3A	120	25TH ST.	RR BRDG.					
3A	121	25TH ST.	RR BRDG.					
3A	122	25TH ST.	RR BRDG.					
3A	126	25TH ST.	25+20L					
3A	127	25TH ST.	27+00R					
3A	128	25TH ST.	29+00L					
3B	83	EB. MAINLINE	121+50R	1	1		1	1
3B	108	25TH ST.	16+20L					
3B	110	ST. CLAIR AVE.	71+05L					
3B	111	ST. CLAIR AVE.	73+00R					
3B	113	ML. BRDG.						
3B	114	ML. BRDG.						
3B	115	ML. BRDG.						
3B	116	ML. BRDG.						
3C	80	WB. MAINLINE	120+55L	1	1		1	1
3C	81	25TH ST.	22+80R					
3C	82	RAMP K	11+60R					
3C	84	WB. MAINLINE	123+30L	1		1	1	
3C	86	RAMP K	8+75R					
3C	88	WB. MAINLINE	126+30L	1		1	1	
3C	90	RAMP K	6+10R					
3C	92	RAMP K	4+30R					
3C	94	RAMP K	2+35R					
3C	96	WB. MAINLINE	134+32					
3C	112	25TH ST.	ML. BRDG.					
3C	117	25TH ST.	ML. BRDG.					
3C	118	25TH ST.	ML. BRDG.					
3C	119	25TH ST.	ML. BRDG.					
3C	123	25TH ST.	RR BRDG.					
3C	124	25TH ST.	RR BRDG.					
3C	125	25TH ST.	RR BRDG.					

CONTROLLER #3 (2 OF 2)

CRKT#	FROM/TO	ELCBL T SERV 6 3C	EC C XLP USE 3-1C 6	REM ELCBL FR CON	CON P 2 GALVS	CON AT ST 1 1/4 ALUM	JUN BX SS AS 8X6X4
3D	98	97					
3D	97	95					
3D	95	93					
3D	93	91					
3D	91	99					
3D	91	89					
3D	89	85					
3D	85	CNTRLR #3					
3E	100	101					
3E	101	102					
3E	102	103					
3E	105	104					
3E	104	106					
3E	104	103					
3E	103	107					
3E	107	109					
3E	109	CNTRLR #3					

CONTROLLER #4

CRKT#	FROM/TO	ELCBL T SERV 6 3C	EC C XLP USE 3-1C 6	REM ELCBL FR CON	CON P 2 GALVS	CON AT ST 1 1/4 ALUM	JUN BX SS AS 8X6X4	SHLDR REM REPL FOR ELEC WRK
4A	1	2	284					
4A	2	4	299					
4A	4	6	299					
4A	6	8	289					
4A	8	10	289					
4A	10	12	284					
4A	12	14	279					
4A	14	CNTRLR #4	241	35	35			
4B	3	5	264					
4B	5	ST 13	119					
4B	ST 13	7	159					
4B	7	9	279					
4B	9	11	279					
4B	11	13	279					
4B	13	15	289					
4B	15	CNTRLR #4	441	35	35			120
4C	40	38	284					
4C	38	36	279					
4C	36	34	279					
4C	34	32	289					
4C	32	30	289					
4C	30	28	289					
4C	28	26	284					
4C	26	24	284					
4C	24	22	259					
4C	22	20	284					
4C	20	18	284					
4C	18	16	279					
4C	16	CNTRLR #4	106					
4D	39	37	289					
4D	37	35	289					
4D	35	33	289					
4D	33	31	284					
4D	31	29	284					
4D	29	27	284					
4D	27	25	284					
4D	25	23	284					
4D	23	21	284					
4D	21	19	284					
4D	19	17	284					
4D	17	CNTRLR #4	316					

CONTROLLER #3 (2 OF 2)

CRKT#	POLE #	ROADWAY	STATION	REM LT UNIT SALV	LT P A 45MH 4MA	LT P A TB 50MH 8MA	LUM SV HOR MT 400W	REL EX SIGN PANEL SP
3D	85	EB. MAINLINE	123+60R					
3D	87	RAMP G	6+00R					
3D	89	EB. MAINLINE	126+30R	1			1	1
3D	91	EB. MAINLINE	128+85R					
3D	93	EB. MAINLINE	130+95R					
3D	95	EB. MAINLINE	133+10R					
3D	97	EB. MAINLINE	135+20R					
3D	98	EB. MAINLINE	137+90R					
3D	99	RAMP J	10+80R					
3E	100	RAMP J	8+60R					
3E	101	RAMP G	10+20R					
3E	102	RAMP G	12+40R					
3E	103	RAMP G	14+80R					
3E	104	RAMP J	0+75R					
3E	105	25TH ST.	10+75					
3E	106	25TH ST.	12+40L					
3E	107	25TH ST.	1+15R					
3E	109	ST. CLAIR AVE.	73+00R					

CONTROLLER #4

CRKT#	POLE #	ROADWAY	STATION	REM LT UNIT SALV	LT P A 45MH 4MA	LT P A TB 50MH 8MA	LUM SV HOR MT 400W	REL EX SIGN PANEL SP
4A	1	WB. MAINLINE	137+15L	1		1	1	
4A	2	WB. MAINLINE	139+90L	1		1	1	
4A	4	WB. MAINLINE	142+70L	1		1	1	1
4A	6	WB. MAINLINE	145+45L	1		1	1	
4A	8	WB. MAINLINE	148+25L	1		1	1	
4A	10	WB. MAINLINE	151+05L	1		1	1	
4A	12	WB. MAINLINE	153+80L	1		1	1	
4A	14	WB. MAINLINE	156+60L	1		1	1	
4B	3	EB. MAINLINE	140+60R	1		1	1	1
4B	5	EB. MAINLINE	143+30R	1		1	1	1
4B	7	EB. MAINLINE	146+00R	1		1	1	
4B	9	EB. MAINLINE	148+70R	1		1	1	
4B	11	EB. MAINLINE	151+40R	1		1	1	
4B	13	EB. MAINLINE	154+10R	1		1	1	1
4B	15	EB. MAINLINE	156+80R	1		1	1	
4C	16	WB. MAINLINE	159+40L	1		1	1	
4C	18	WB. MAINLINE	162+15L	1		1	1	
4C	20	WB. MAINLINE	164+95L	1		1	1	
4C	22	WB. MAINLINE	167+70L	1		1	1	
4C	24	WB. MAINLINE	170+50L	1		1	1	
4C	26	WB. MAINLINE	173+25L	1		1	1	
4C	28	WB. MAINLINE	176+00L	1		1	1	
4C	30	WB. MAINLINE	178+80L	1		1	1	
4C	32	WB. MAINLINE	181+55L	1		1	1	
4C	34	WB. MAINLINE	184+35L	1		1	1	
4C	36	WB. MAINLINE	187+10L	1		1	1	1
4C	38	WB. MAINLINE	189+85L	1		1	1	
4C	40	WB. MAINLINE	192+65L	1		1	1	
4D	17	EB. MAINLINE	159+50R	1		1	1	
4D	19	EB. MAINLINE	162+25R	1		1	1	
4D	21	EB. MAINLINE	165+00R	1		1	1	
4D	23	EB. MAINLINE	167+75R	1		1	1	
4D	25	EB. MAINLINE	170+50R	1		1	1	
4D	27	EB. MAINLINE	173+25R	1		1	1	1
4D	29	EB. MAINLINE	176+00R	1		1	1	
4D	31	EB. MAINLINE	178+75R	1		1	1	
4D	33	EB. MAINLINE	181+50R	1		1	1	
4D	35	EB. MAINLINE	184+25R	1		1	1	
4D	37	EB. MAINLINE	187+00R	1		1	1	
4D	39	EB. MAINLINE	189+75R	1		1	1	

CONTROLLER #5

CRKT#	FROM/TO	ELCBL T SERV 6 3C	EC C XLP USE 3-1C 6	REM ELCBL FR CON	CON P 2 GALVS	CON AT ST 1 1/4 ALUM	JUN BX SS AS BX6X4
5A	1	3					
5A	3	4					
5A	4	7					
5A	47	46					
5A	46	7					
5A	7	6	79		35		
5A	6	9	314				
5A	9	11	304				
5A	11	CNTRLR #5	381		170		
5A	2	5					
5A	5	8					
5A	8	10					
5A	10	CNTRLR #5					
5A	12	CNTRLR #5					
5B	EX11	EX9	304				
5B	EX9	EX7	339				
5B	EX7	EX5	319				
5B	EX5	EX3	299				
5B	EX3	EX1	344				
5B	EX1	26	344				
5B	26	23					
5B	23	20					
5B	20	43					
5B	18	43					
5B	43	42					
5B	42	16					
5B	42	41					
5B	42	40					
5B	40	JB					
5B	JB	39	146	146		140	1
5B	51	50					
5B	50	48					
5B	48	49					
5B	48	44					
5B	44	40					
5B	40	13					
5B	13	14					
5B	13	45					
5B	13	CNTRLR #5					
5C	WX14	WX12	314				
5C	WX12	WX10	319				
5C	WX10	WX8	319				
5C	WX8	WX6	314				
5C	WX6	WX4	314				
5C	WX4	27	329				
5C	27	25					
5C	25	24					
5C	24	22					
5C	22	21					
5C	21	19					
5C	19	36					
5C	36	17					
5C	17	37					
5C	35	33					
5C	33	34					
5C	33	32					
5C	32	31					
5C	31	37					
5C	37	38					
5C	28	29					
5C	29	30					
5C	30	38					
5C	38	CNTRLR #5					
5C	15	CNTRLR #5					

CONTROLLER #5

CRKT#	POLE #	ROADWAY	STATION	REM LT UNIT SALV	LT P A 45MH 4MA	LT P A TB 50MH 8MA	LUM SV HOR MT 400W	REL EX SIGN PANEL SP
5A	1	EB, MAINLINE	192+50R					
5A	2	WB, MAINLINE	195+40L					
5A	3	EB, MAINLINE	195+20R					
5A	4	EB, MAINLINE	197+50R					
5A	5	WB, MAINLINE	198+10L					
5A	6	EB, MAINLINE	200+40R	1		1	1	
5A	7	RAMP D	5+10R					
5A	8	WB, MAINLINE	200+40L					
5A	9	EB, MAINLINE	203++55R	1		1	1	
5A	10	RAMP A	11+10R					
5A	11	EB, MAINLINE	206+55R	1		1	1	
5A	12	RAMP A	8+10R					
5A	46	RAMP D	8+30L					
5A	47	RAMP D	11+25L					
5B	13	RAMP E	10+30R					
5B	14	EB, MAINLINE	209+40R					
5B	16	EB, MAINLINE	212+35L					
5B	18	EB, MAINLINE	215+30R					
5B	20	RAMP F	11+50R					
5B	23	EB, MAINLINE	221+35R					
5B	26	EB, MAINLINE	225+40R					
5B	39	KNGS HWY BRDG	32+00L	1	1		1	
5B	40	KNGS HWY	29+20L					
5B	41	RAMP F	3+10R					
5B	42	RAMP F	5+60R					
5B	43	RAMP F	8+50R					
5B	44	RAMP E	5+50R					
5B	45	RAMP E	8+00R					
5B	48	RAMP D	15+30L					
5B	49	KNGS HWY	26+25L					
5B	50	KNGS HWY	23+40L					
5B	51	KNGS HWY	19+60R					
5B	EX1	EB, MAINLINE	228+50R	1		1	1	1
5B	EX3	EB, MAINLINE	231+70R	1		1	1	
5B	EX5	EB, MAINLINE	234+90R	1		1	1	
5B	EX7	EB, MAINLINE	238+10R	1		1	1	
5B	EX9	EB, MAINLINE	241+30R	1		1	1	
5B	EX11	EB, MAINLINE	244+50R	1		1	1	
5C	15	WB, MAINLINE	209+40L					
5C	17	WB, MAINLINE	212+25L					
5C	19	WB, MAINLINE	215+30L	1		1	1	1
5C	21	WB, MAINLINE	218+60L	1		1	1	
5C	22	RAMP B	17+35R					
5C	24	WB, MAINLINE	221+90L					
5C	25	WB, MAINLINE	224+10L					
5C	27	WB, MAINLINE	227+10L					
5C	28	KNGS HWY	40+00R					
5C	29	KNGS HWY	38+85L					
5C	30	KNGS HWY	36+50L					
5C	31	RAMP C	5+10R					
5C	32	RAMP B	25+80R					
5C	33	RAMP B	23+10R					
5C	34	RAMP C	7+50R					
5C	35	RAMP B	20+35R					
5C	36	RAMP C	10+10R					
5C	37	KNGS HWY	34+75R					
5C	38	RAMP A	5+10R					
5C	WX4	WB, MAINLINE	230+10L	1		1	1	
5C	WX6	WB, MAINLINE	233+10L	1		1	1	
5C	WX8	WB, MAINLINE	236+10L	1		1	1	
5C	WX10	WB, MAINLINE	239+15L	1		1	1	
5C	WX12	WB, MAINLINE	242+20L	1		1	1	
5C	WX14	WB, MAINLINE	245+20L	1		1	1	

CONTROLLER #2		
MESSAGE AREA		
A	B	C
43	400	480
44	400	480
45	400	480
48	400	480
49	400	480
54	400	480
57	400	480
59	400	480
61	400	480
62	400	480
63	400	480
64	400	480
65	400	480
66	400	480
67	400	480
69	400	480
71	400	480
72	400	480
73	400	480
76	400	480
77	400	480

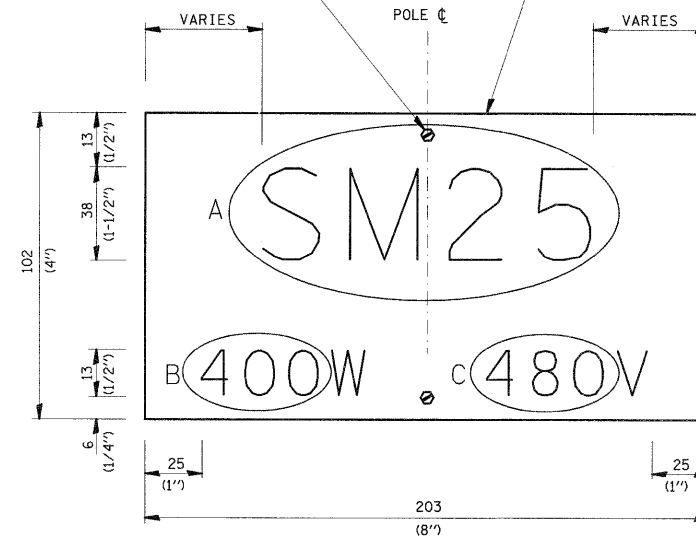
CONTROLLER #3		
MESSAGE AREA		
A	B	C
83	400	480
84	400	480
88	400	480
108	400	480
110	400	480
111	400	480
113	400	480
114	400	480
115	400	480
116	400	480

CONTROLLER #4		
MESSAGE AREA		
A	B	C
1	400	480
2	400	480
3	400	480
4	400	480
5	400	480
6	400	480
7	400	480
8	400	480
9	400	480
10	400	480
11	400	480
12	400	480
13	400	480
14	400	480
15	400	480
16	400	480
17	400	480
18	400	480
19	400	480
20	400	480
21	400	480
22	400	480
23	400	480
24	400	480
25	400	480
26	400	480
27	400	480
28	400	480
29	400	480
30	400	480
31	400	480
32	400	480
33	400	480
34	400	480
35	400	480
36	400	480
37	400	480
38	400	480
39	400	480
40	400	480

CONTROLLER #5		
MESSAGE AREA		
A	B	C
6	400	480
9	400	480
11	400	480
19	400	480
21	400	480
27	400	480
39	400	480
EX1	400	480
EX3	400	480
EX5	400	480
EX7	400	480
EX9	400	480
EX11	400	480
WX4	400	480
WX6	400	480
WX8	400	480
WX10	400	480
WX12	400	480
WX14	400	480

19 (3/4") STAINLESS STEEL SELF-TAPPING SCREWS WITH 5 STAINLESS STEEL SPACERS BEHIND PANEL. HOLES FOR MOUNTING SHALL BE DRILLED ON POLE C ONLY (2-SCREWS PER PANEL).

19 GA ALUMINUM PLATE.



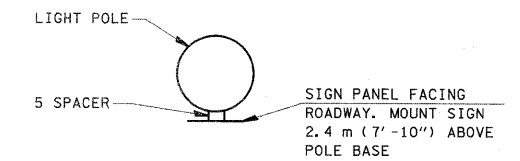
TYPICAL POLE IDENTIFICATION PANEL

SIGN PANEL DETAIL

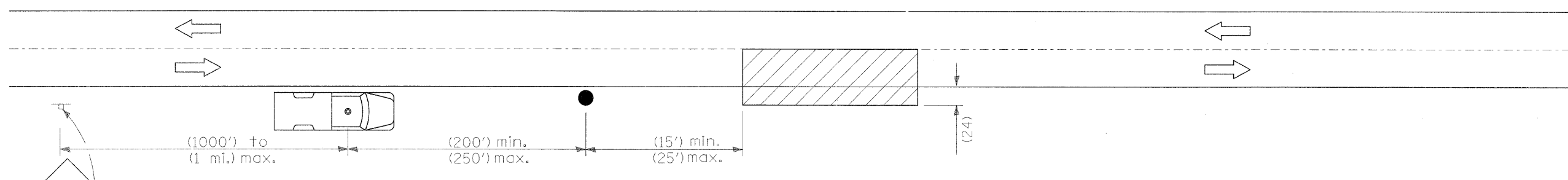
NOTE: ALL LETTERS AND NUMERALS SHALL BE SERIES C GOTHIC, NON-REFLECTIVE WHITE PREMIUM QUALITY ENAMEL.

SIGN INFORMATION SHALL BE IN ACCORDANCE WITH LIGHT POLE NUMBERING & WATTAGES SHOWN IN THE SCHEDULE.

ON BRIDGE PARAPET MOUNTED POLES, MOUNT ONE SIGN PANEL FACING ROADWAY 610 (2 FT) ABOVE POLE BASE.

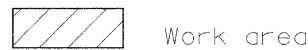


SIGN PANEL MOUNTING DETAIL
(MOUNT 300 (1 FT) FROM TOP OF PIER OR BEARING PAD FOR UNDERPASS LIGHTING)



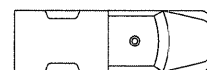
W21-6(0)-48

SYMBOLS



Work area

☐ Sign on portable or permanent support



Truck with flashing amber light and dual emergency flashers

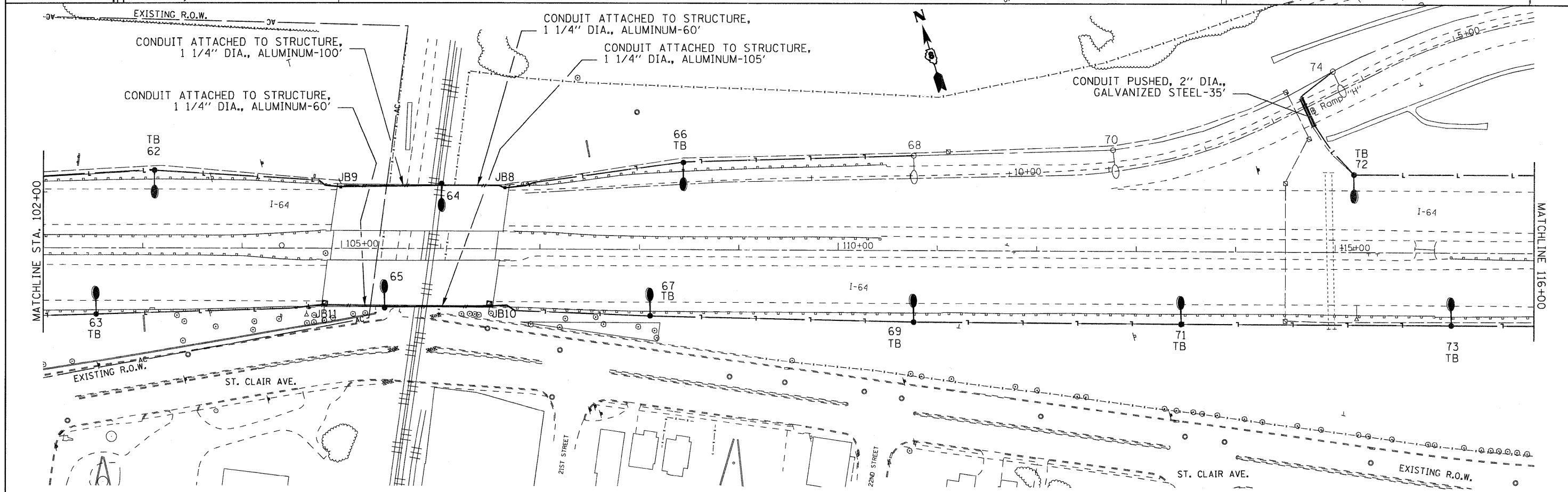
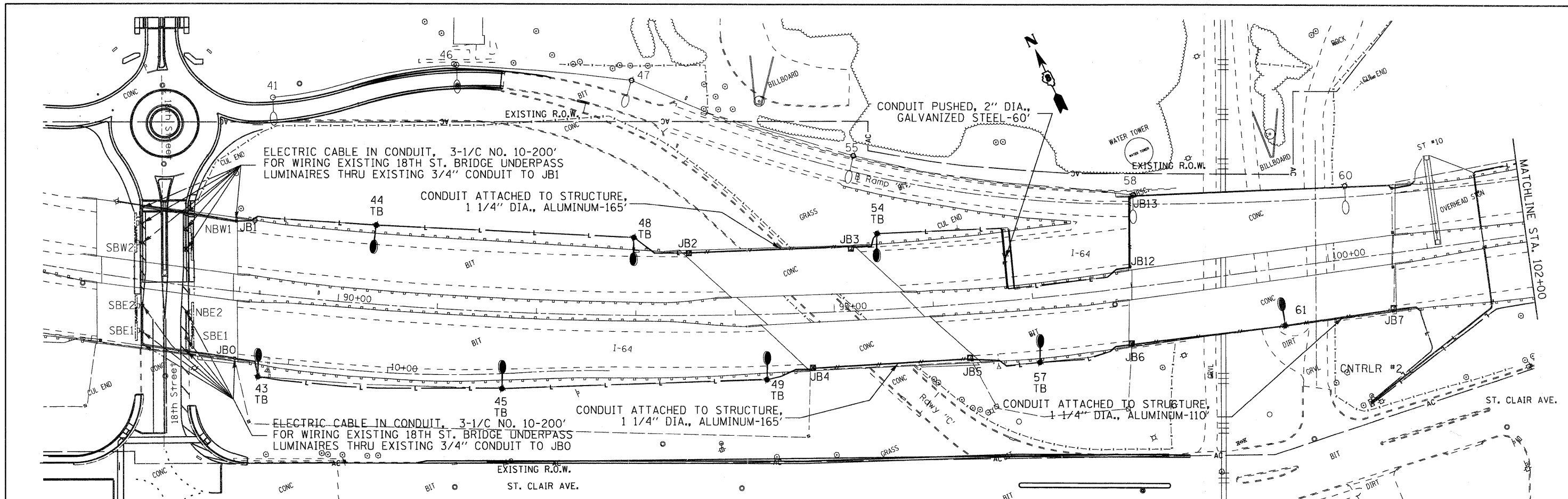
● Flagger with traffic control sign

TYPICAL APPLICATIONS

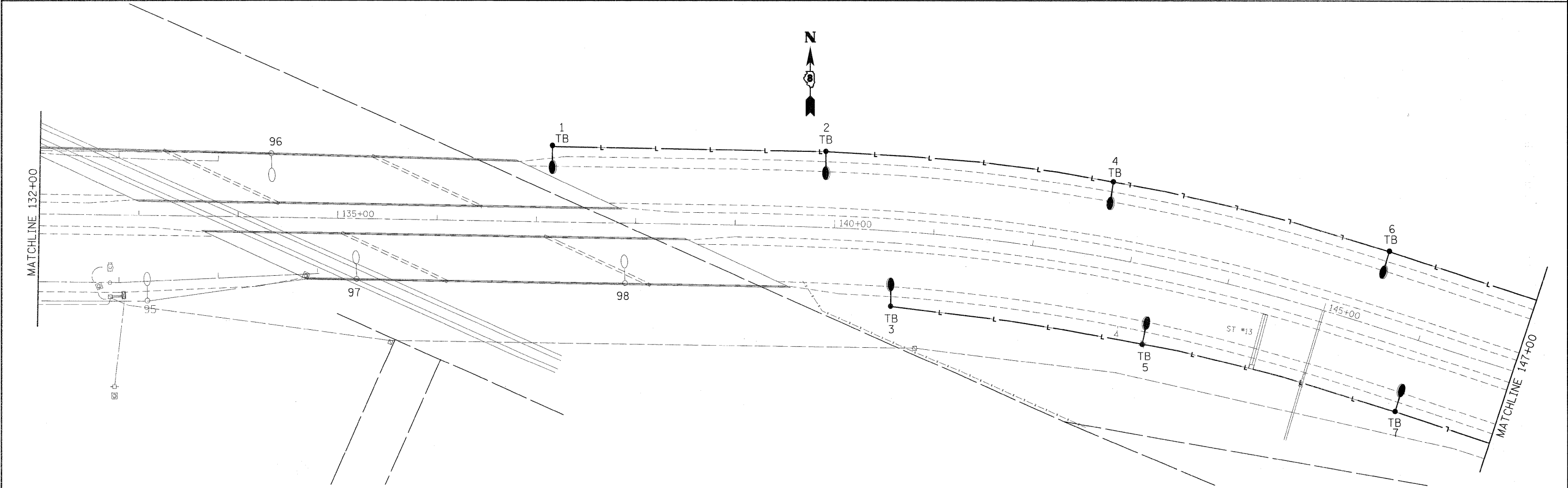
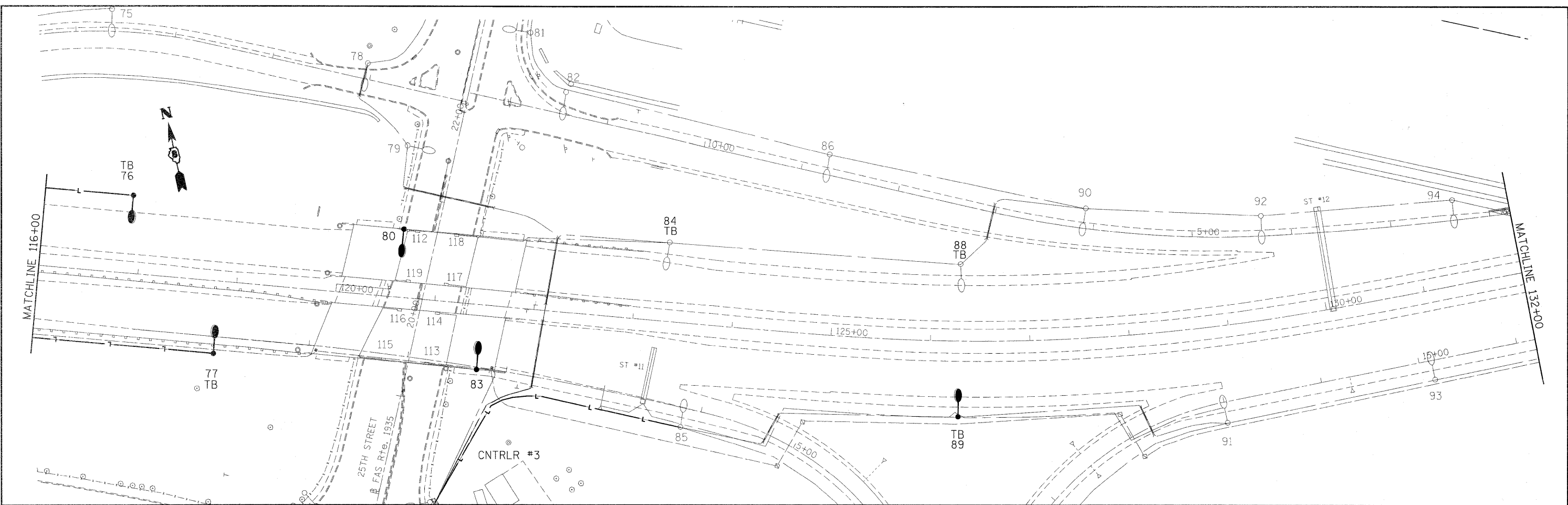
Utility operations

All dimensions are in inches, unless otherwise shown.

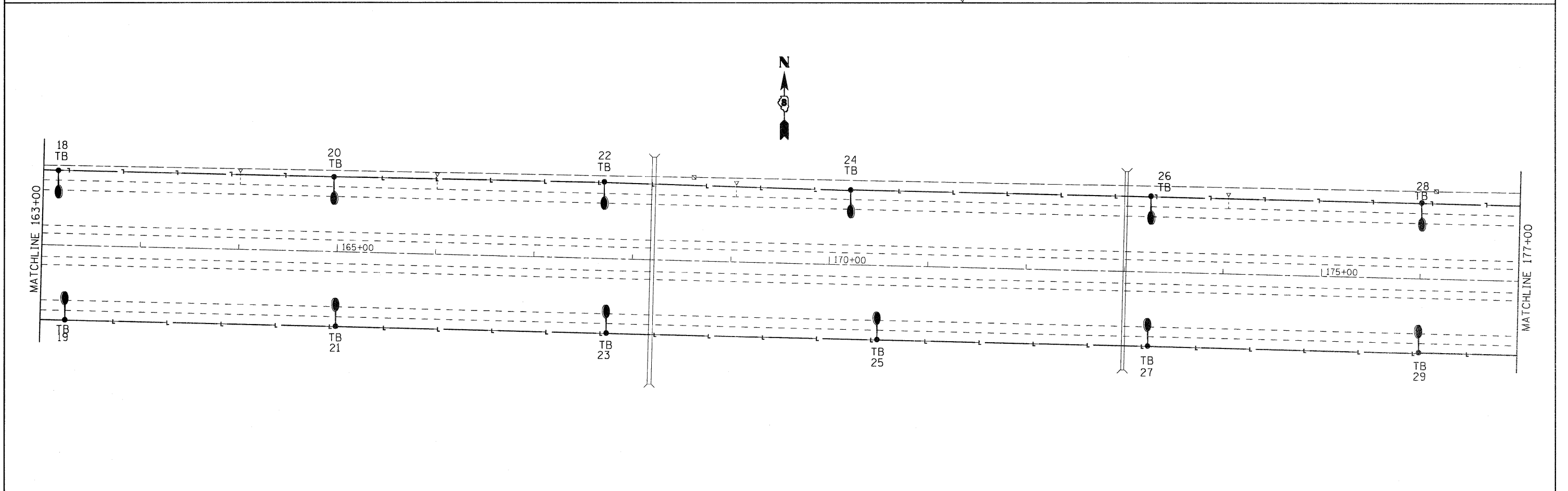
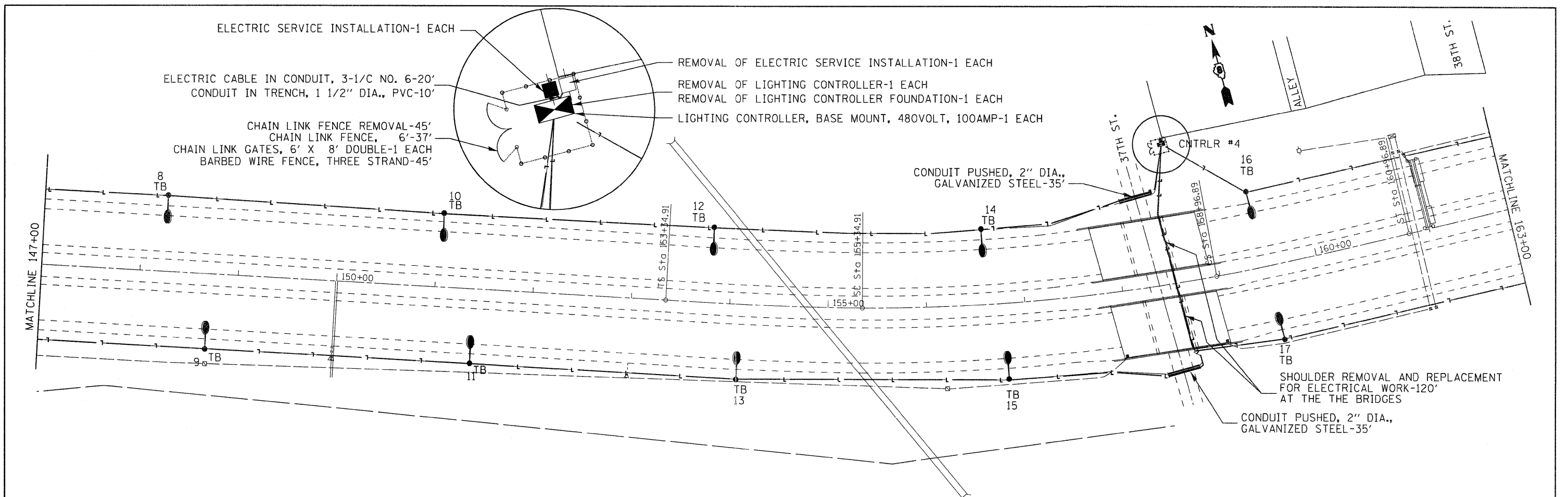
FILE NAME =	USER NAME = prestonme	DESIGNED -	REVISED -	STATE OF ILLINOIS DEPARTMENT OF TRANSPORTATION	SIGN PANEL DETAILS & DETAIL FOR NIGHTTIME LIGHTING INSPECTION				F.A.I. RTE.	SECTION	COUNTY	TOTAL SHEETS	SHEET NO.
ca:\pw\work\owidat\prestonme\d8239232\d8239232.dwg	76e59-plan-TS.dgn	DRAWN -	REVISED -		64	82-(1,2,3)L-1	ST CLAIR	16	9				
	PLOT SCALE = 50.0000' / in.	CHECKED -	REVISED -		CONTRACT NO. 76E59								
	PLOT DATE = 5/13/2011	DATE -	REVISED -		SCALE:	SHEET NO.	OF	SHEETS	STA.	TO STA.	FED. ROAD DIST. NO.	ILLINOIS FED. AID PROJECT	



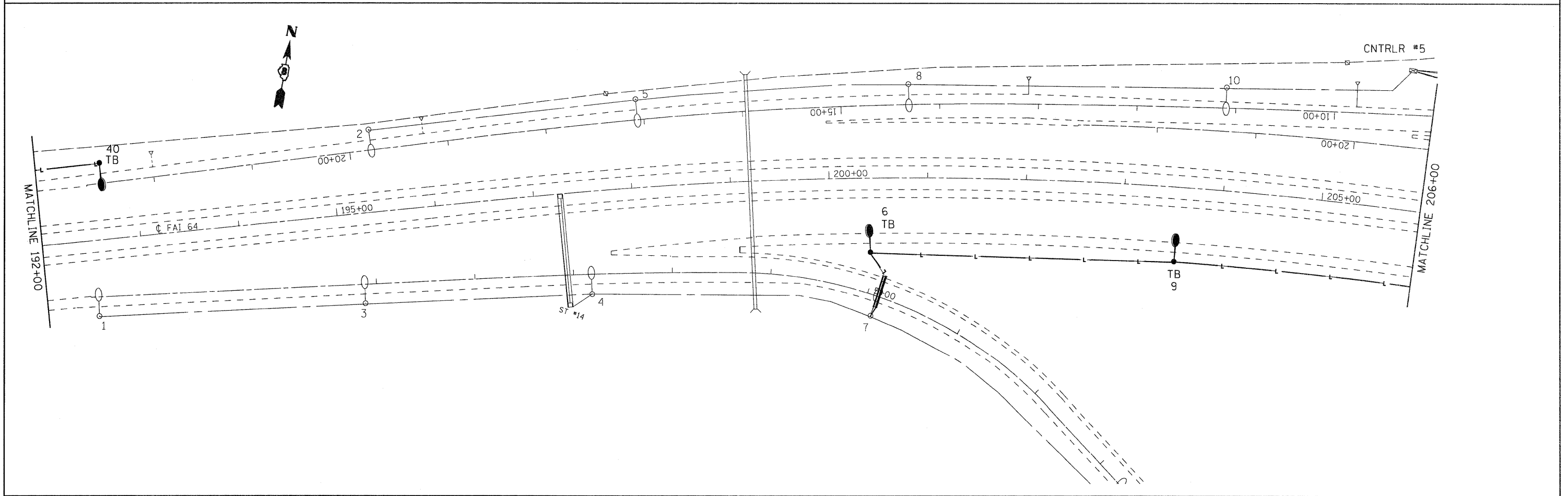
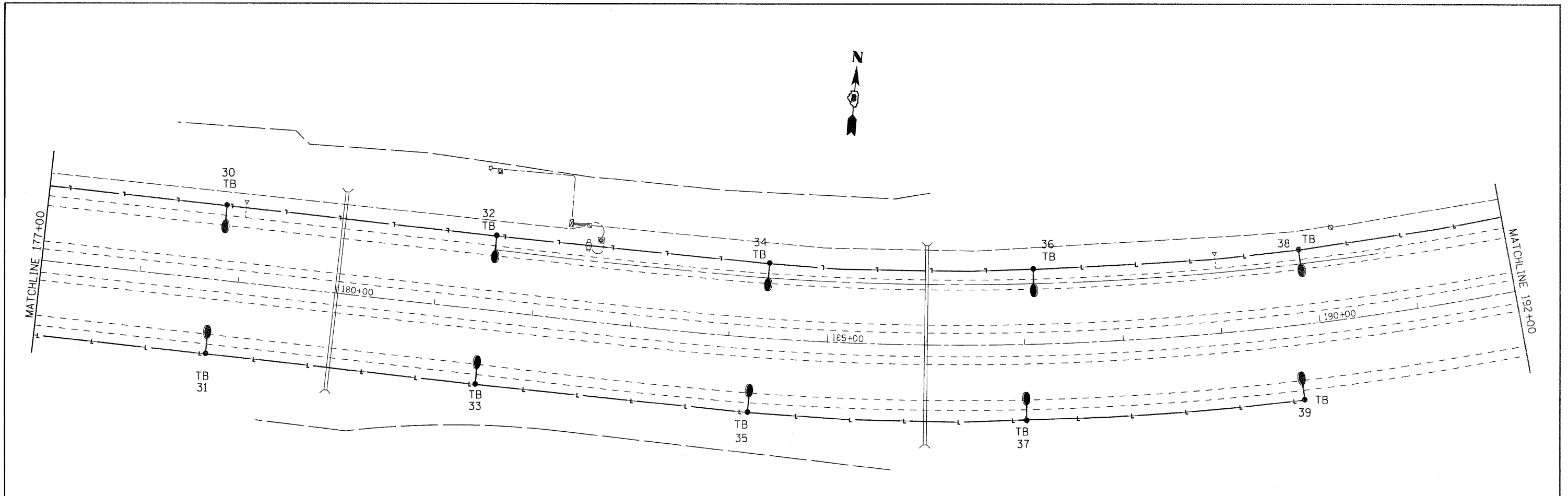
FILE NAME =	USER NAME = prestonme	DESIGNED -	REVISED -	STATE OF ILLINOIS DEPARTMENT OF TRANSPORTATION	CONTROLLERS #2 - #5 SHT. 1 OF 6 LIGHTING PLAN	F.A.I. RTE.	SECTION	COUNTY	TOTAL SHEETS	SHEET NO.	
c:\pwork\p1\dot\prestonme\d0239232\d0239232.dgn	6e59-plm-TS.dgn	DRAWN -	REVISED -			.64	B2-112.3N-1	ST. CLAIR	16	10	
PLOT SCALE = 50,0000' / in.	CHECKED -	REVISED -	REVISED -			CONTRACT NO. Z6E59					
PLOT DATE = 4/22/2011	DATE -	REVISED -	REVISED -			FED. ROAD DIST. NO. ILLINOIS FED. AID PROJECT					



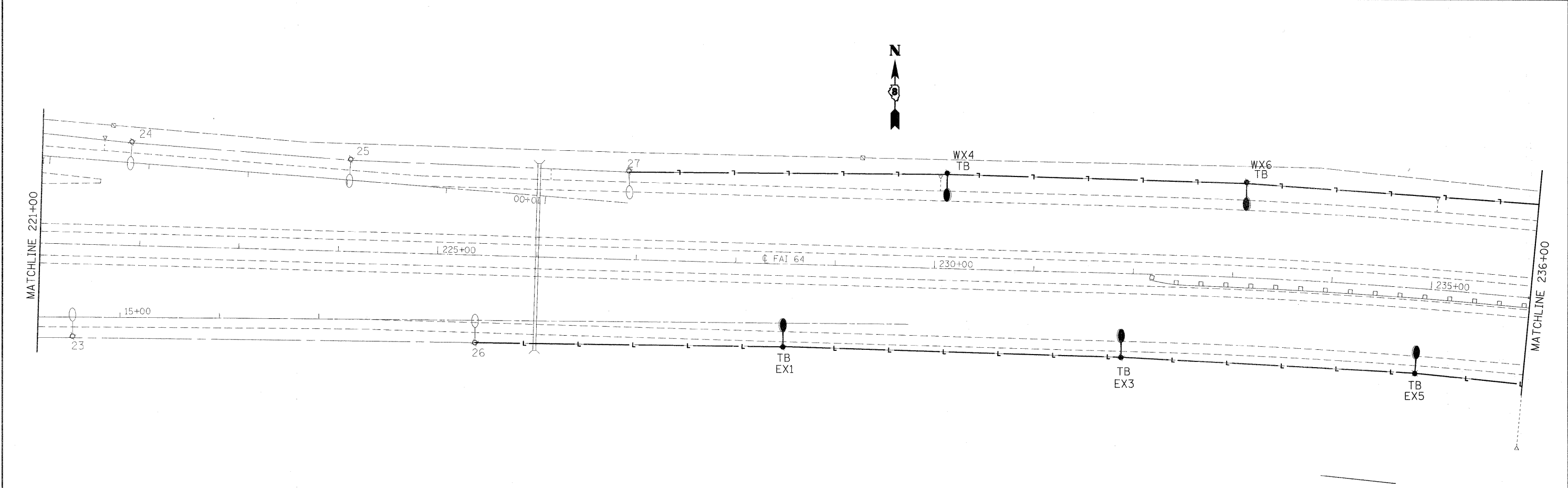
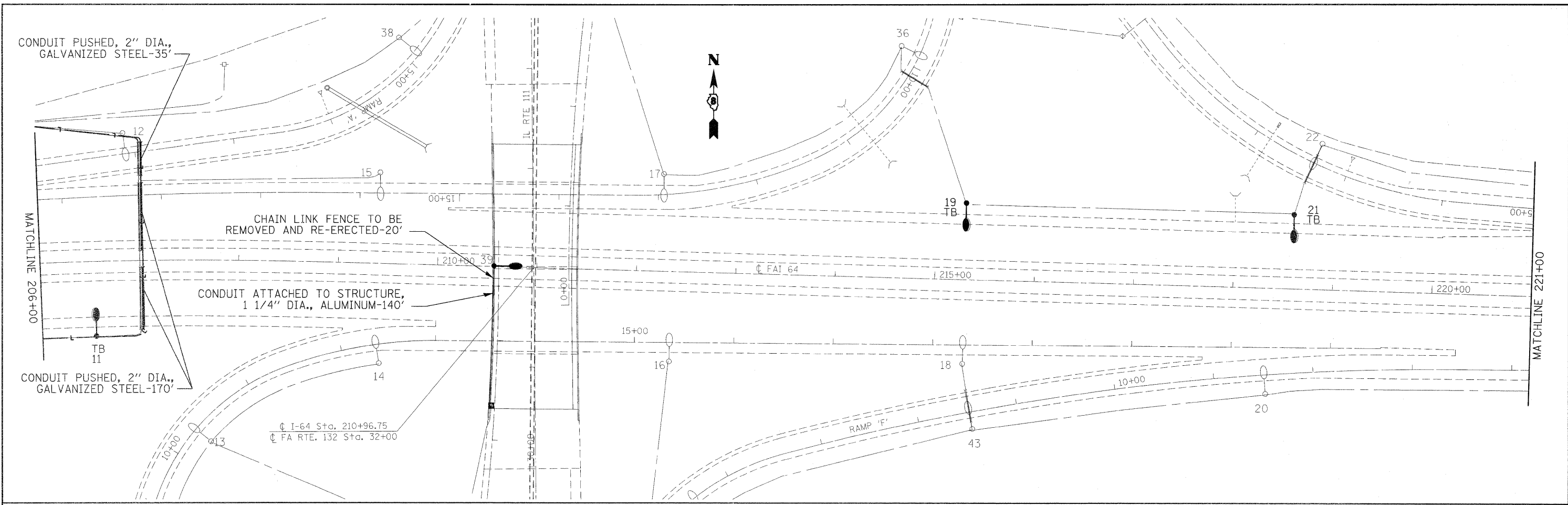
FILE NAME =	USER NAME = prestonm	DESIGNED -	REVISED -	STATE OF ILLINOIS DEPARTMENT OF TRANSPORTATION	CONTROLLERS #2 - #5 SHT. 2 OF 6 LIGHTING PLAN	F.A.I. RTE.	SECTION	COUNTY	TOTAL SHEETS	SHEET NO.
ct:\px_work\pwidot\prestonm\08239232\d976e59-plan-TS.dgn	DRAWN -	REVISED -	64			82-(1,2,3)I-1	ST CLAIR	16	11	
PLOT SCALE = 50.0000' / 1"	CHECKED -	REVISED -	CONTRACT NO. 76E59							
PLOT DATE = 5/13/2011	DATE -	REVISED -	ILLINOIS FED. AID PROJECT							
				SCALE:		SHEET NO. OF SHEETS		STA. TO STA.		



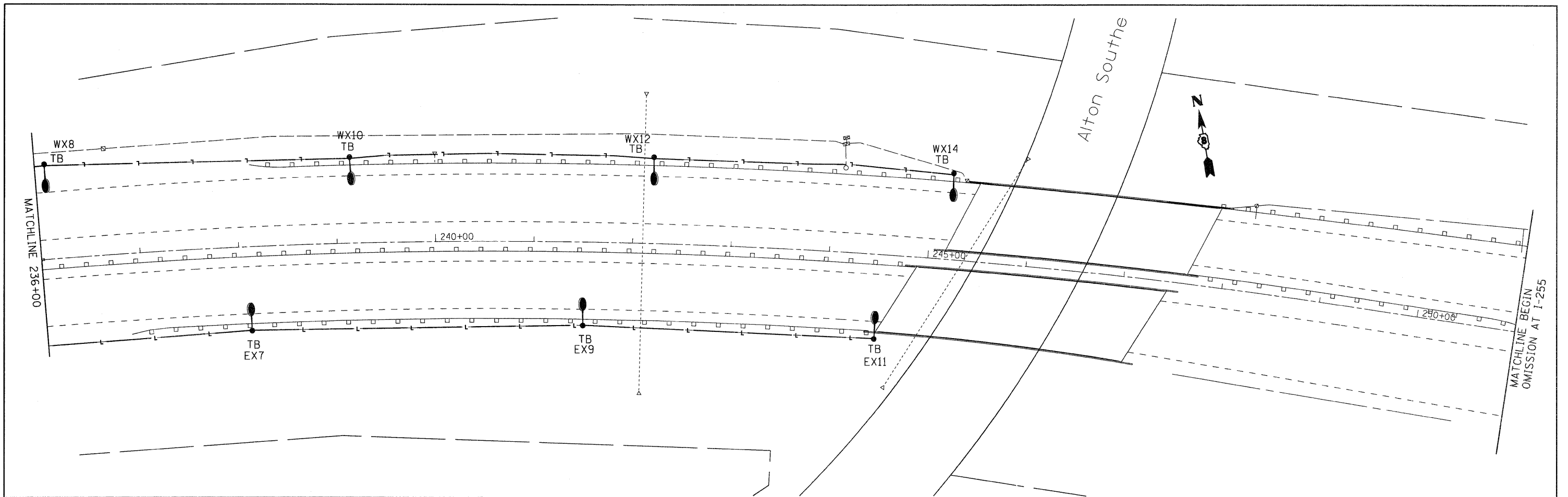
FILE NAME =	USER NAME = prestonme	DESIGNED -	REVISED -	STATE OF ILLINOIS DEPARTMENT OF TRANSPORTATION	CONTROLLERS #2 - #5 SHT. 3 OF 6 LIGHTING PLAN	F.A.I. RTE.	SECTION	COUNTY	TOTAL SHEETS	SHEET NO.	
c:\pwork\pwork\prestonme\d2239232\d876e59-plan-TS.dgn	PLT SCALE = 50.0000' / IN.	DRAWN -	REVISED -			64-	82:112.31L:1-	SI CLAIR	16	12	
PLT DATE = 3/30/2011	DATE -	CHECKED -	REVISED -			SCALE: _____ SHEET NO. ____ OF ____ SHEETS STA. _____ TO STA. _____		FED. ROAD DIST. NO. _____ ILLINOIS FED. AID PROJECT			
		DATE -	REVISED -					CONTRACT NO. 76E59			



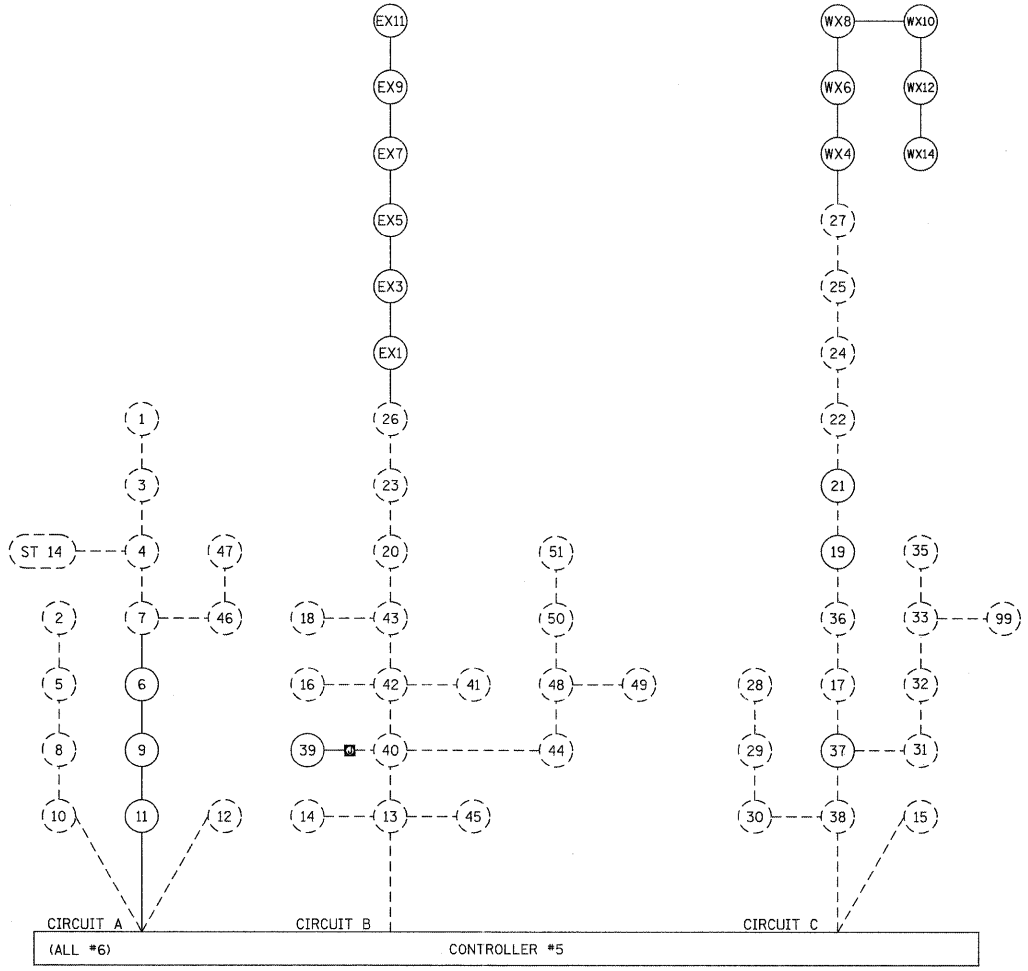
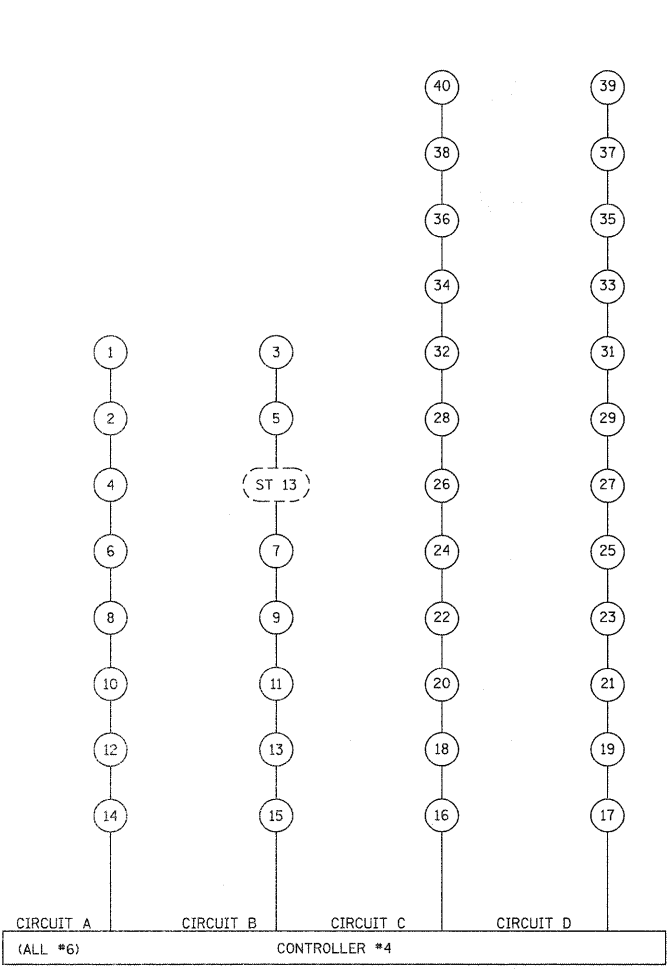
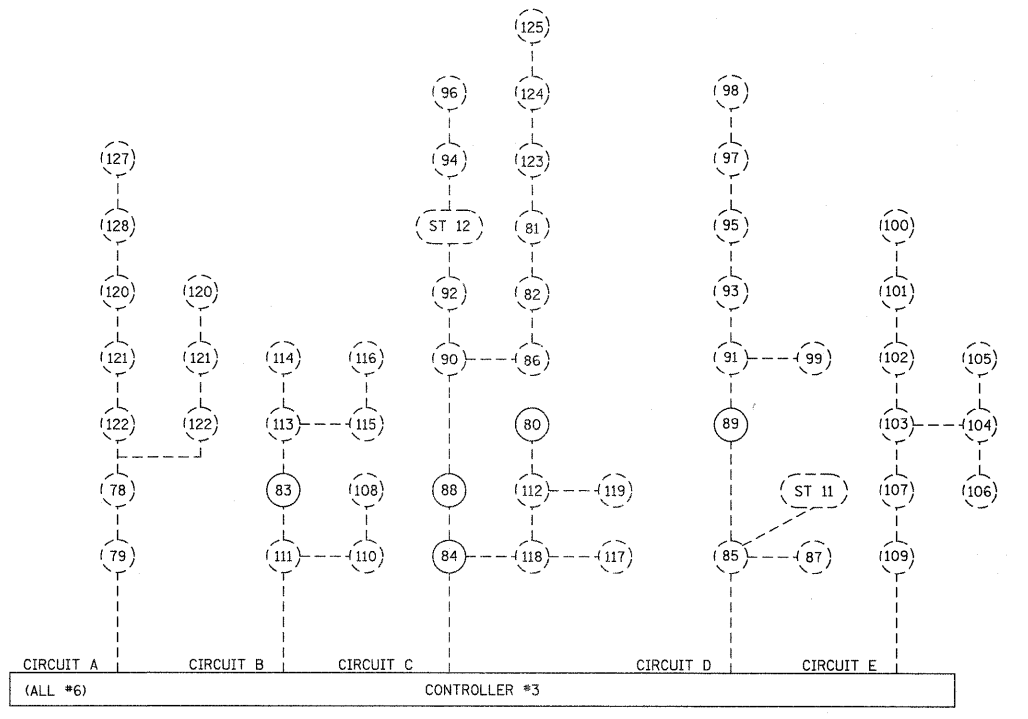
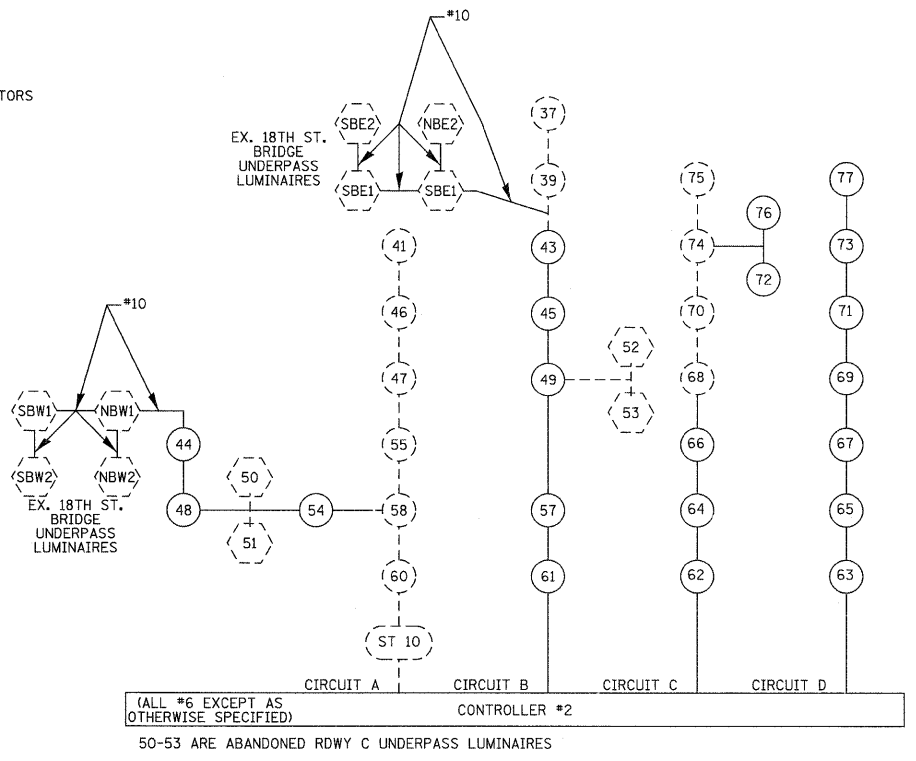
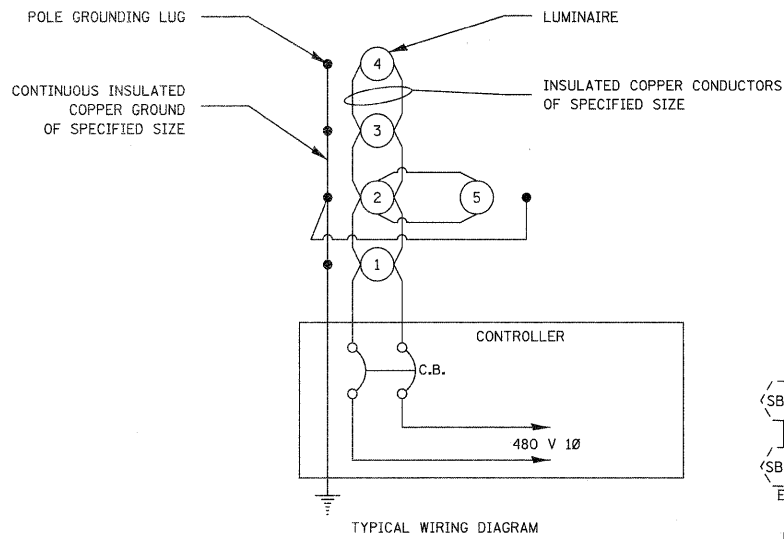
FILE NAME =	USER NAME = preston	DESIGNED -	REVISED -	STATE OF ILLINOIS DEPARTMENT OF TRANSPORTATION	CONTROLLERS #2 - #5 SHT. 4 OF 6 LIGHTING PLAN	F.A.I. RTE.	SECTION	COUNTY	TOTAL SHEETS	SHEET NO.	
c:\pwwork\pwwork\preston\10239232\10239232.dwg	PLLOT SCALE = 50.0000' / IN.	DRAWN -	REVISED -			64	02:11:23:11	SI CLAIR	16	13	
	PLLOT DATE = 3/30/2011	CHECKED -	REVISED -			SCALE: _____ SHEET NO. ____ OF ____ SHEETS STA. _____ TO STA. _____		CONTRACT NO. 76E59			
		DATE -	REVISED -			FED. ROAD DIST. NO. _____ ILLINOIS FED. AID PROJECT					



FILE NAME =	USER NAME = prestonne	DESIGNED -	REVISED -	STATE OF ILLINOIS DEPARTMENT OF TRANSPORTATION	CONTROLLERS #2 - #5 SHT. 5 OF 6 LIGHTING PLAN			F.A.I. RTE.	SECTION	COUNTY	TOTAL SHEETS	SHEET NO.
c:\pwwork\pwwork\prestonne\d0239232\d0276e59\plan\TS.dgn	PLOT SCALE = 50.0000' / in.	DRAWN -	REVISED -					64	82-(1,2,3)L-1	ST CLAIR	16	14
	PLOT DATE = 5/13/2011	CHECKED -	REVISED -					CONTRACT NO. 76E59				
		DATE -	REVISED -					FED. ROAD DIST. NO. ILLINOIS FED. AID PROJECT				
					SCALE:	SHEET NO.	OF	SHEETS	STA.	TO STA.		



FILE NAME =	USER NAME = prestonme	DESIGNED -	REVISED -	STATE OF ILLINOIS DEPARTMENT OF TRANSPORTATION	CONTROLLERS #2 - #5 SHT. 6 OF 6 LIGHTING PLAN	F.A.J. RTE.	SECTION	COUNTY	TOTAL SHEETS	SHEET NO.	
ct:\pw\work\p\pidot\prestonme\0239232\d876e59-plan-TS.dgn	PLOT SCALE = 50,0000' / IN.	DRAWN -	REVISED -			64	82-11.2314-1	ST. CLAIR	16	15	
PLOT DATE = 3/30/2011	DATE -	CHECKED -	REVISED -			CONTRACT NO. 16E59					
						SCALE: _____ SHEET NO. ___ OF ___ SHEETS STA. _____ TO STA. _____ FED. ROAD DIST. NO. _____ ILLINOIS FED. AID PROJECT					



----- EXISTING
 _____ PROPOSED

ELECTRIC CABLE IN TRENCH, SERVICE, NO. 6 3 C
 ELECTRIC CABLE IN CONDUIT, 600V (XLP-TYPE USE) 3-1/C NO. 6

FILE NAME =	USER NAME = prestonne	DESIGNED -	REVISED -	STATE OF ILLINOIS DEPARTMENT OF TRANSPORTATION	WIRING DIAGRAM			F.A.I. RTE.	SECTION	COUNTY	TOTAL SHEETS	SHEET NO.
c:\pw\work\pwwork\prestonne\d0239232\d0239232-1.dwg	6659-plen-TS.dgn	DRAWN -	REVISED -					64	82-(1,2,3)L-1	ST CLAIR	16	16
	PLOT SCALE = 50.0000' / 1"	CHECKED -	REVISED -		CONTRACT NO. 76E59							
	PLOT DATE = 5/13/2011	DATE -	REVISED -		SCALE:	SHEET NO.	OF SHEETS	STA.	TO STA.	FED. ROAD DIST. NO.	ILLINOIS FED. AID PROJECT	