

STATE OF ILLINOIS
DEPARTMENT OF TRANSPORTATION
DIVISION OF HIGHWAYS

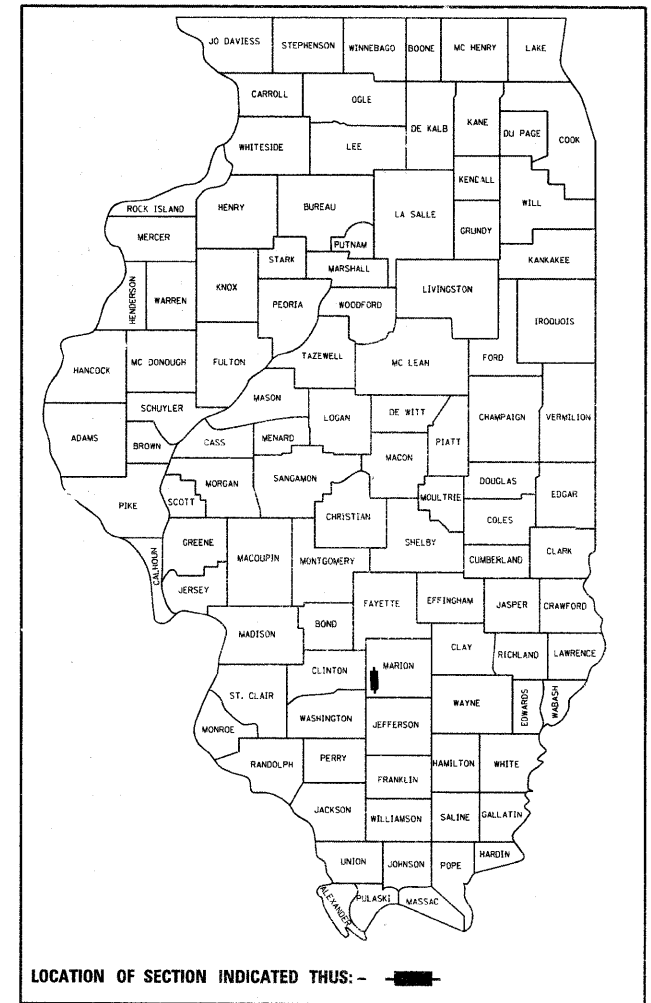
PROPOSED HIGHWAY PLANS

FAP ROUTE 805 (IL 161)
SECTION 8Z-T-1
CENTRALIA-NOLEMAN ST.
PUMP STATION REHABILITATION
MARION COUNTY

C-98-032-11

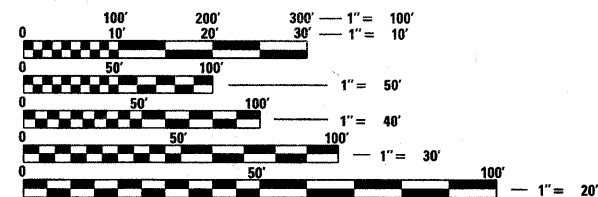
F.A.P. RTE.	SECTION	COUNTY	TOTAL SHEETS	SHEET NO.
805	8Z-T-1	MARION	12	1
		ILLINOIS	CONTRACT NO. 76E71	

D-98-032-11



INDEX OF SHEETS/DRAWINGS

SHEET NO.	TITLE
1.	COVER SHEET
2.	GENERAL NOTES
3.	SUMMARY OF QUANTITIES
4.	EXISTING MECHANICAL/ELECTRICAL
5.	REMOVAL MECHANICAL/ELECTRICAL
6.	GENERAL PUMP STATION WORK
7.	MECHANICAL ELECTRICAL
8.	ELECTRICAL
9.	ELECTRICAL
10.	CONTROL PANEL/STARTER PANELS
11.	MOTOR STARTER DETAIL
12.	ALARM PANEL



FULL SIZE PLANS HAVE BEEN PREPARED USING STANDARD ENGINEERING SCALES. REDUCED SIZED PLANS WILL NOT CONFORM TO STANDARD SCALES. IN MAKING MEASUREMENTS ON REDUCED PLANS, THE ABOVE SCALES MAY BE USED.

J.U.L.I.E.
JOINT UTILITY LOCATION INFORMATION FOR EXCAVATION
1-800-892-0123
OR 811



PROJECT ENGINEER: JIM WESSEL 618-346-3273
PROJECT MANAGER: PHILLIP SAWYER 618-346-3275

CONTRACT NO. 76E71

STATE OF ILLINOIS
DEPARTMENT OF TRANSPORTATION
DIVISION OF HIGHWAYS

SUBMITTED March 29 2011

Mary C. Janel
DEPUTY DIRECTOR OF HIGHWAYS, REGION 5 ENGINEER

May 13 2011

Scott E. Stitt, P.E.
Acting ENGINEER OF DESIGN AND ENVIRONMENT

May 13 2011

Christine M. Rood
DIRECTOR OF HIGHWAYS, CHIEF ENGINEER

**PRINTED BY THE AUTHORITY
OF THE STATE OF ILLINOIS**