

STATE OF ILLINOIS
DEPARTMENT OF TRANSPORTATION
DIVISION OF HIGHWAYS

PROPOSED HIGHWAY PLANS

FAP ROUTE 805 (IL 161)
SECTION 8Z-T-1
CENTRALIA-NOLEMAN ST.
PUMP STATION REHABILITATION
MARION COUNTY

C-98-032-11

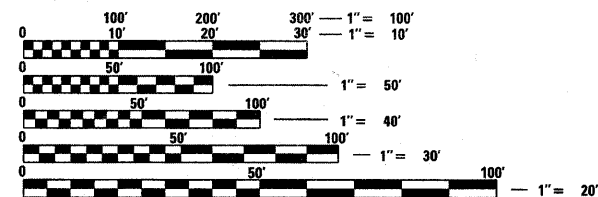
F.A.P. RTE.	SECTION	COUNTY	TOTAL SHEETS	SHEET NO.
805	8Z-T-1	MARION	12	1
		ILLINOIS	CONTRACT NO. 76E71	

D-98-032-11



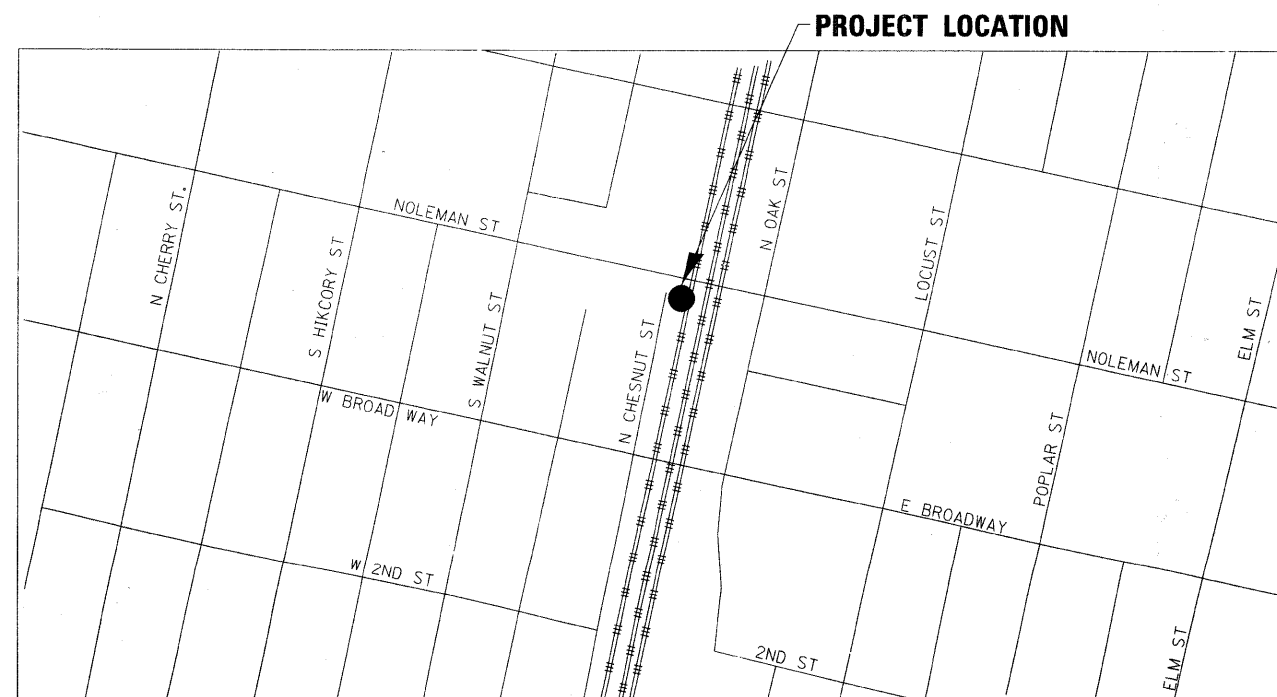
INDEX OF SHEETS/DRAWINGS

SHEET NO.	TITLE
1.	COVER SHEET
2.	GENERAL NOTES
3.	SUMMARY OF QUANTITIES
4.	EXISTING MECHANICAL/ELECTRICAL
5.	REMOVAL MECHANICAL/ELECTRICAL
6.	GENERAL PUMP STATION WORK
7.	MECHANICAL ELECTRICAL
8.	ELECTRICAL
9.	ELECTRICAL
10.	CONTROL PANEL/STARTER PANELS
11.	MOTOR STARTER DETAIL
12.	ALARM PANEL



FULL SIZE PLANS HAVE BEEN PREPARED USING STANDARD ENGINEERING SCALES. REDUCED SIZED PLANS WILL NOT CONFORM TO STANDARD SCALES. IN MAKING MEASUREMENTS ON REDUCED PLANS, THE ABOVE SCALES MAY BE USED.

J.U.L.I.E.
JOINT UTILITY LOCATION INFORMATION FOR EXCAVATION
1-800-892-0123
OR 811



PROJECT ENGINEER: JIM WESSEL 618-346-3273
PROJECT MANAGER: PHILLIP SAWYER 618-346-3275

CONTRACT NO. 76E71

STATE OF ILLINOIS
DEPARTMENT OF TRANSPORTATION
DIVISION OF HIGHWAYS

SUBMITTED March 29 2011
Mary C. Janel
DEPUTY DIRECTOR OF HIGHWAYS, REGION 5 ENGINEER

May 13 2011
Scott E. Stitt, P.E.
Acting ENGINEER OF DESIGN AND ENVIRONMENT

May 13 2011
Christine M. Rood
DIRECTOR OF HIGHWAYS, CHIEF ENGINEER

**PRINTED BY THE AUTHORITY
OF THE STATE OF ILLINOIS**

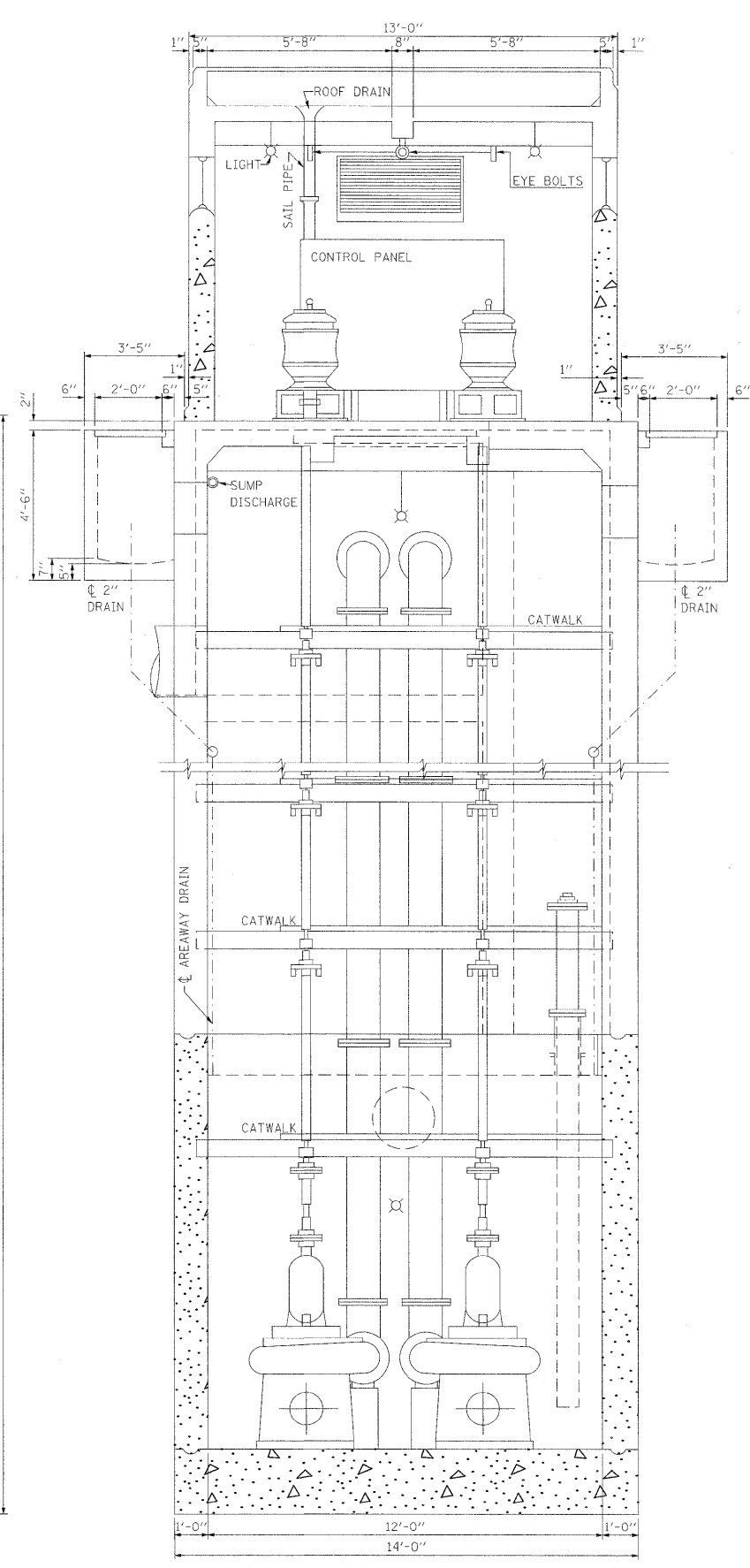
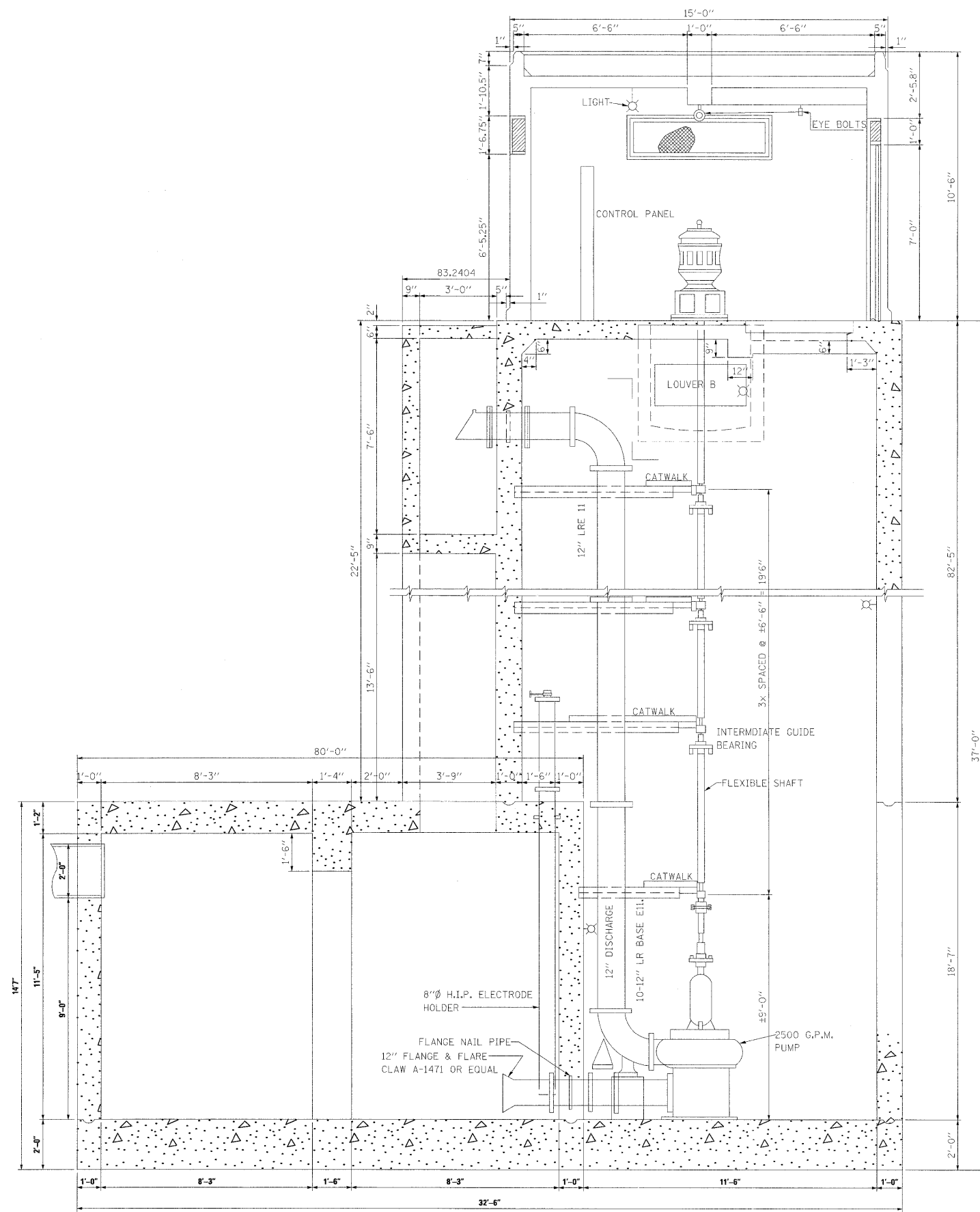
SUMMARY OF QUANTITIES

SUMMARY OF QUANTITIES			URBAN TOTAL QUANTITIES	CONSTRUCTION TYPE CODE		
CODE NO	ITEM	UNIT		MARION 100% STATE 0040		
67000400	ENGINEER'S FIELD OFFICE, TYPE A	CAL MO	16	16		
67100100	MOBILIZATION	L SUM	1	1		
X0335700	PUMP STATION GENERAL WORK	L SUM	1	1		
X0783300	PUMP STATION ELECTRICAL WORK	L SUM	1	1		
X0783500	PUMP STATION MECHANICAL WORK	L SUM	1	1		
Z0048665	RAILROAD PROTECTIVE LIABILITY INSURANCE	L SUM	1	1		

GENERAL NOTES

1. THE STANDARDS AND REVISION NUMBERS LISTED SHALL APPLY TO THIS PROJECT.
2. CONTRACTOR WILL FIELD VERIFY ALL CABLE LENGTHS BEFORE ORDERING PUMP.
3. CONTRACTOR WILL FIELD VERIFY ALL FIELD MEASUREMENTS PRIOR TO ORDERING MATERIALS.
4. ONLY 1 PUMP CAN BE TAKEN OUT OF SERVICE AT A TIME.
5. CONTRACTOR WILL SECURE ANY LOCAL, STATE, COUNTY PERMITS NEEDED FOR PROJECT.
6. CONTRACTOR WILL FOLLOW ALL NEC AND LOCAL ELECTRICAL CODES FOR ALL CONDUIT AND ELECTRICAL WIRES.
7. CONTRACTOR WILL BE RESPONSIBLE FOR REMOVING ANY SEDIMENTS/DEBRIS IN THE WET WELL AND THE DISCHARGE PIPE OF THE PUMP STATION
8. A OPEN HOUSE FOR ALL CONTRACTORS TO VIEW PUMP STATION SHALL BE HELD ON JUNE 8, 2011 FROM 10 AM TO 12 NOON.

FILE NAME =	USER NAME = prestonme	DESIGNED -	REVISED -	STATE OF ILLINOIS DEPARTMENT OF TRANSPORTATION	GENERAL NOTES	F.A.P. RTE.	SECTION	COUNTY	TOTAL SHEETS	SHEET NO.	
ct:\pw\work\pwidot\prestonme\02247305\0876e71-shr-plan.dgn	PLOT SCALE = 50,000' / 1" =	DRAWN -	REVISED -			805	8Z-T-1	MARION	12	3	
	PLOT DATE = 5/16/2011	CHECKED -	REVISED -			CONTRACT NO. 76E71					
		DATE -	REVISED -			SCALE:	SHEET NO.	OF	SHEETS	STA.	TO STA.



FOR INFORMATION ONLY

STATE OF ILLINOIS
DEPARTMENT OF TRANSPORTATION

EXISTING MECHANICAL SECTIONS/ELECTRICAL

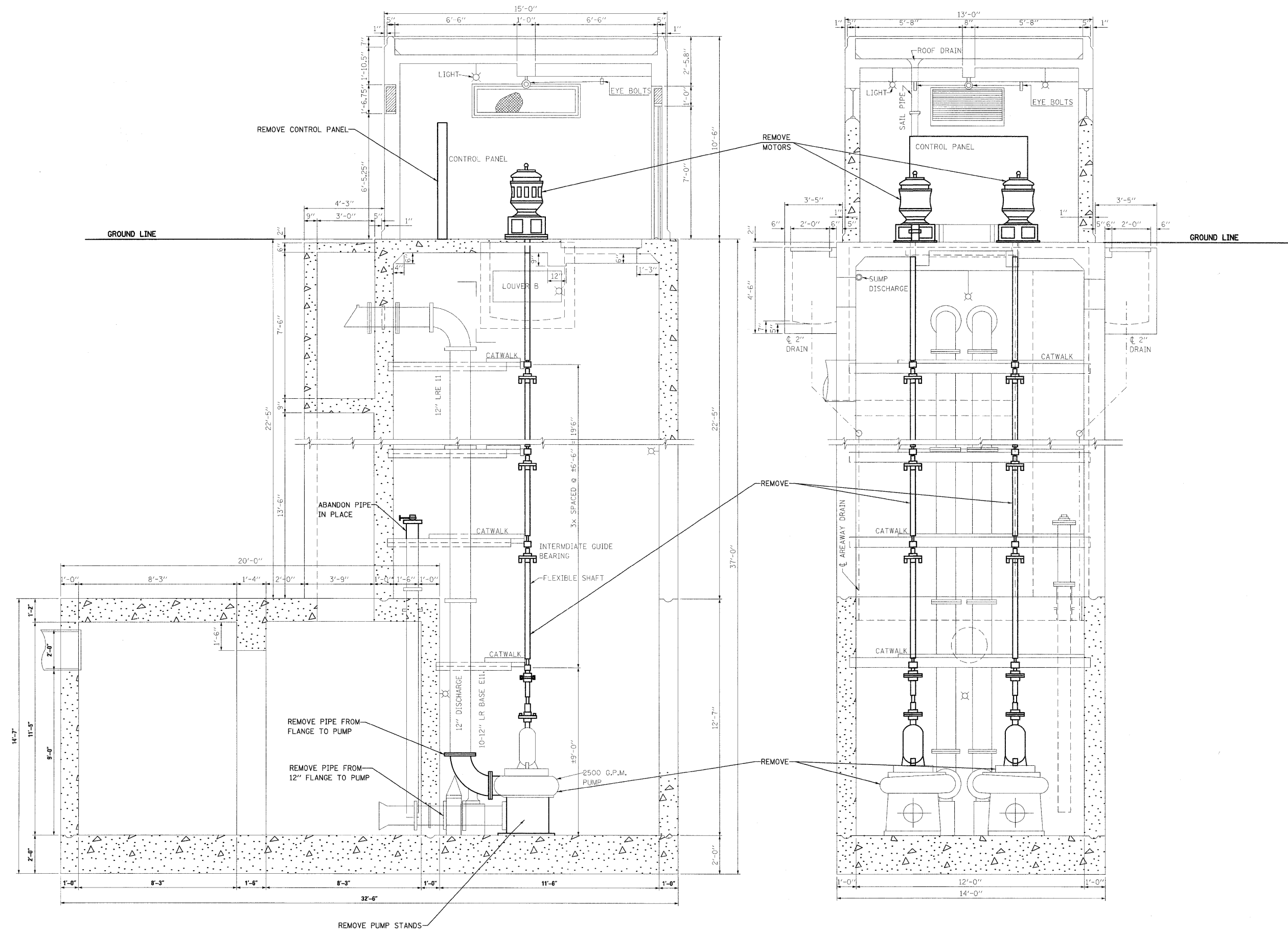
FILE NAME =	USER NAME = prestonne
es:\pw_work\px\dos\prestone\d2247306\d276e71-sht-plan.dgn	
PLOT SCALE = 50,0000' / in.	
PLOT DATE = 5/18/2011	

DESIGNED -	REVISED -
DRAWN -	REVISED -
CHECKED -	REVISED -
DATE -	REVISED -

SCALE:	SHEET NO.	OF	SHEETS	STA.	TO STA.
--------	-----------	----	--------	------	---------

F.A.P. RTE.	SECTION	COUNTY	TOTAL SHEETS	SHEET NO.
805	8Z-T-1	MARION	12	4
CONTRACT NO. 76E71				

FED. ROAD DIST. NO.	ILLINOIS FED. AID PROJECT
---------------------	---------------------------



FILE NAME =
 c:\pwwork\pwwork\prestonme\247306\247306.dgn

USER NAME = prestonme
 76a71-ahp-plan.dgn
 PLOT SCALE = 5/8" = 1'-0"
 PLOT DATE = 5/18/2011

DESIGNED -
 DRAWN -
 CHECKED -
 DATE -

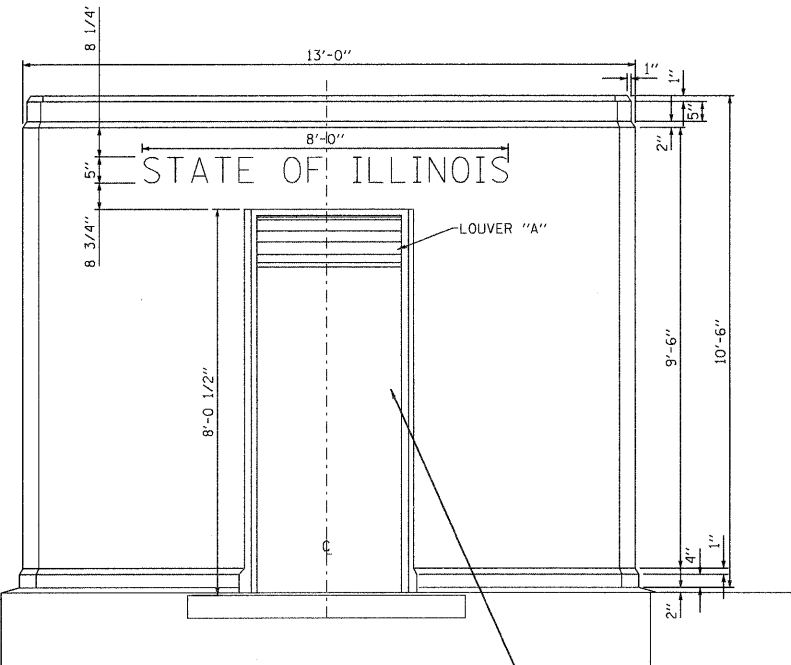
REVISED -
 REVISED -
 REVISED -
 REVISED -

**STATE OF ILLINOIS
 DEPARTMENT OF TRANSPORTATION**

REMOVAL MECHANICAL SECTIONS/ELECTRICAL

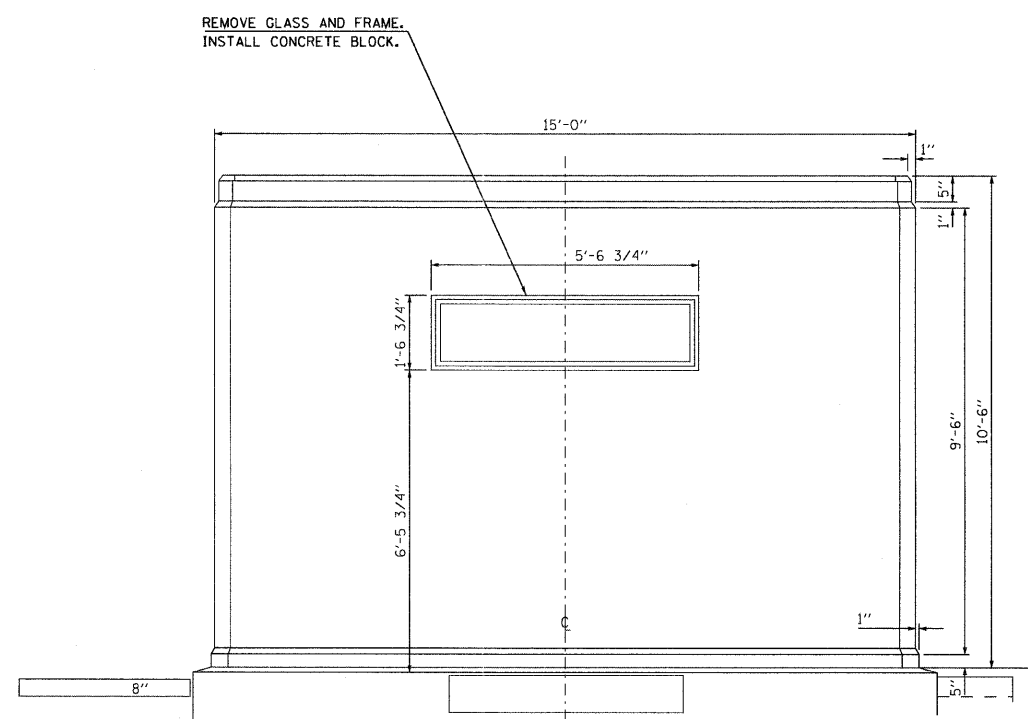
SCALE: SHEET NO. OF SHEETS STA. TO STA.

F.A.P. RTE. 805	SECTION 8Z-T-1	COUNTY MARION	TOTAL SHEETS 12	SHEET NO. 5
CONTRACT NO. 76E71				
FED. ROAD DIST. NO. ILLINOIS FED. AID PROJECT				

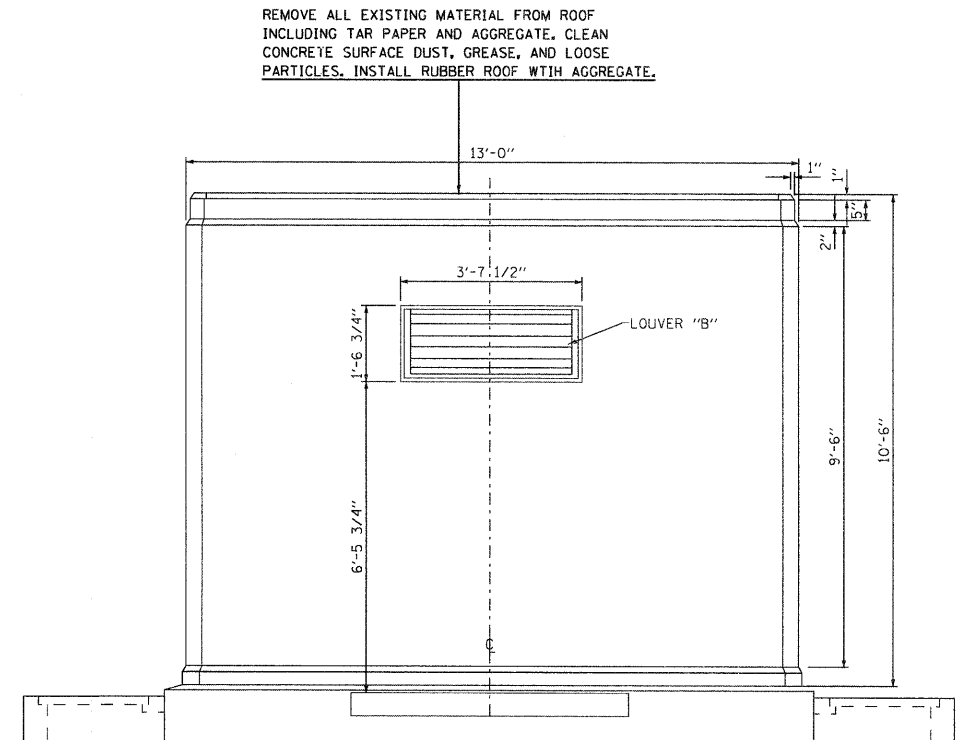


SOUTH ELEVATION

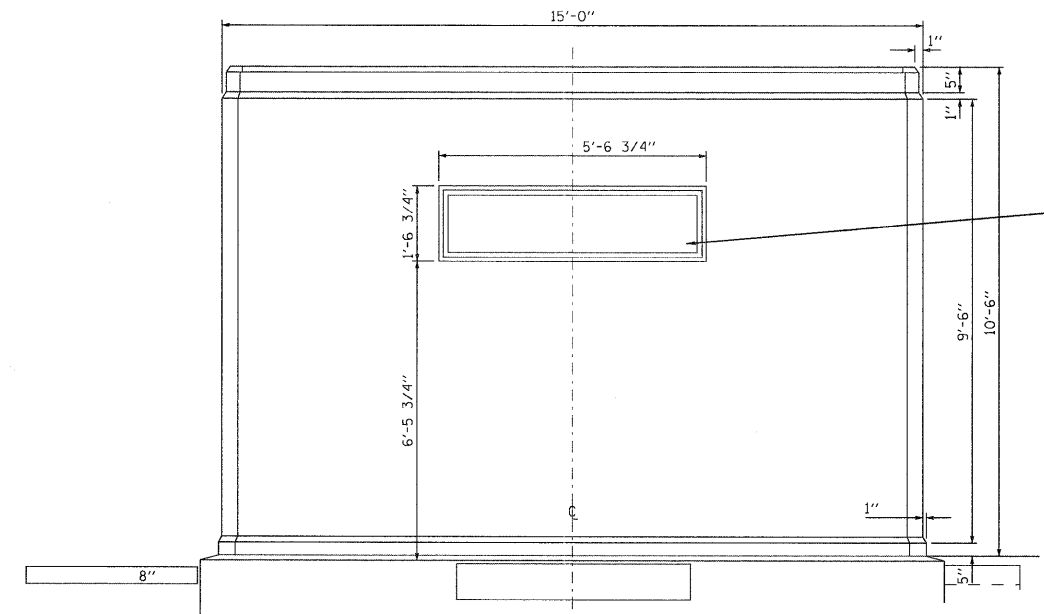
REMOVE AND REPLACE DOOR, FRAME, AND VENT. PROPOSED DOOR TO INCLUDE LOCKABLE PAD LOCK HASP.



WEST ELEVATION



NORTH ELEVATION



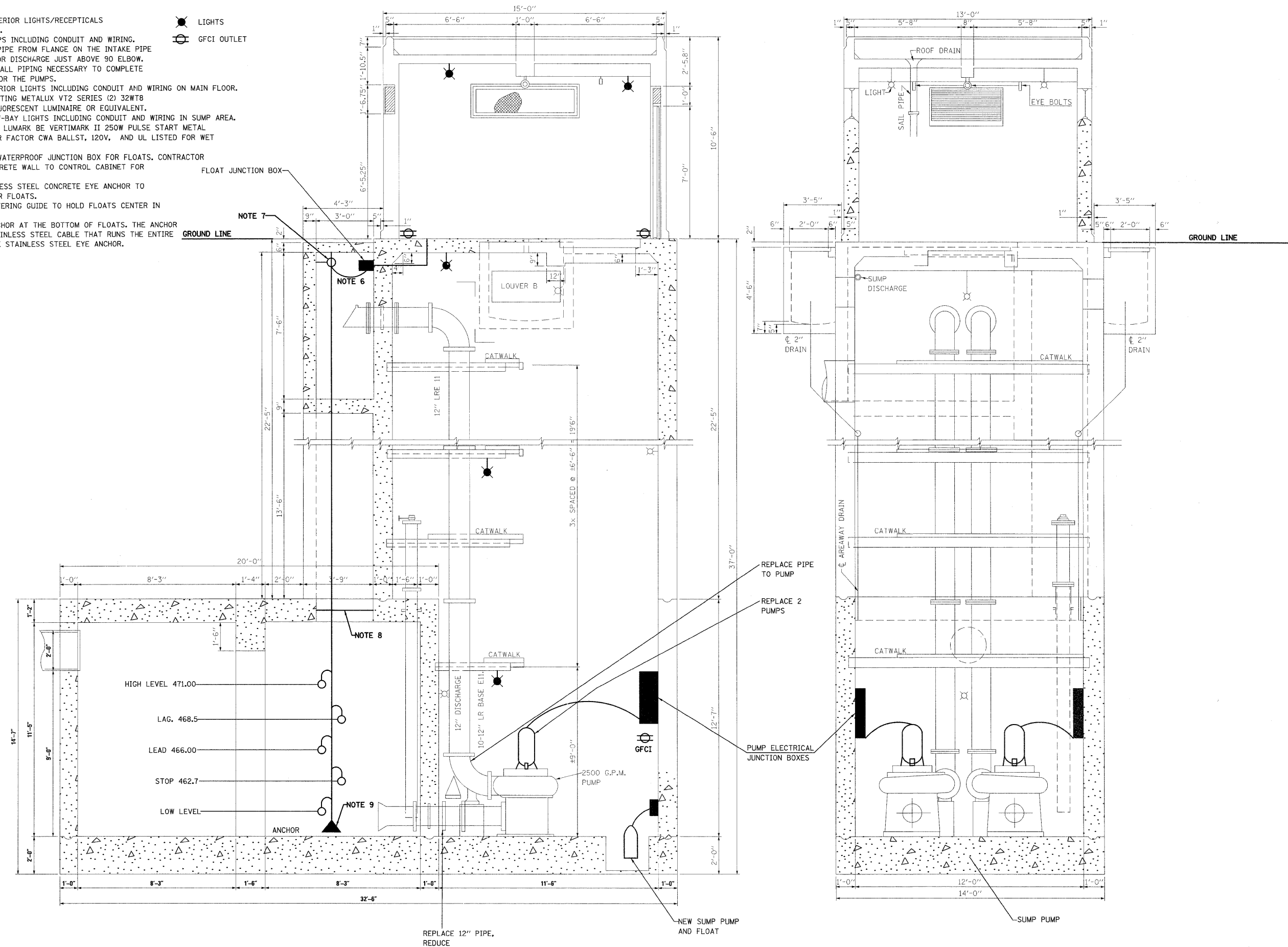
EAST ELEVATION

FILE NAME =	USER NAME = alfordb	DESIGNED -	REVISED -	STATE OF ILLINOIS DEPARTMENT OF TRANSPORTATION	GENERAL PUMP STATION WORK				F.A.P. RTE.	SECTION	COUNTY	TOTAL SHEETS	SHEET NO.
cr:\pw_work\pwidot\alfordb\247386\4876671-sht-plen.dgn	PLOT SCALE = 50.0000' / IN.	DRAWN -	REVISED -						805	8Z-T-1	MARION	12	6
PLOT DATE = 3/29/2011	DATE -	CHECKED -	REVISED -		SCALE: SHEET NO. OF SHEETS STA. TO STA.				CONTRACT NO. 76E71				
									FED. ROAD DIST. NO. ILLINOIS FED. AID PROJECT				

NOTES:

1. EXACT LOCATION OF OVERHEAD INTERIOR LIGHTS/RECEPTALS WILL BE DETERMINED BY ENGINEER.
2. CONTRACTOR WILL REPLACE 2 PUMPS INCLUDING CONDUIT AND WIRING. CONTRACTOR WILL REPLACE 12" PIPE FROM FLANGE ON THE INTAKE PIPE AT THE WALL TO THE 12" PIPE FOR DISCHARGE JUST ABOVE 90 ELBOW.
3. CONTRACTOR IS RESPONSIBLE FOR ALL PIPING NECESSARY TO COMPLETE PIPING INTAKES AND DISCHARGE FOR THE PUMPS.
4. CONTRACTOR WILL INSTALL 4 INTERIOR LIGHTS INCLUDING CONDUIT AND WIRING ON MAIN FLOOR. THE LIGHTS WILL BE COOPER LIGHTING METALUX VT2 SERIES (2) 32WT8 LAMPS X 48" 120V VAPORTITE FLUORESCENT LUMINAIRE OR EQUIVALENT.
5. CONTRACTOR WILL INSTALL 3 LOW-BAY LIGHTS INCLUDING CONDUIT AND WIRING IN SUMP AREA. LIGHTS WILL BE COOPER LIGHTING LUMARK BE VERTIMARK II 250W PULSE START METAL HALIDE, TYPE V LENS, HIGH POWER FACTOR CWA BALLST, 120V, AND UL LISTED FOR WET LOCATIONS OR EQUIVALENT.
6. CONTRACTOR WILL INSTALL NEMA WATERPROOF JUNCTION BOX FOR FLOATS. CONTRACTOR WILL CORE A HOLE THROUGH CONCRETE WALL TO CONTROL CABINET FOR FLOAT WIRES.
7. CONTRACTOR WILL INSTALL STAINLESS STEEL CONCRETE EYE ANCHOR TO HOLD STAINLESS STEEL CABLE FOR FLOATS.
8. CONTRACTOR WILL INSTALL A CENTERING GUIDE TO HOLD FLOATS CENTER IN HOLE.
9. CONTRACTOR WILL INSTALL AN ANCHOR AT THE BOTTOM OF FLOATS. THE ANCHOR WILL BE MOUNTED TO A 3/8" STAINLESS STEEL CABLE THAT RUNS THE ENTIRE LENGTH FROM THE ANCHOR TO THE STAINLESS STEEL EYE ANCHOR.

☼ LIGHTS
 Ⓞ GFCI OUTLET



FILE NAME =
 c:\pwwork\pwwork\preston\10247305\10247305.dwg

USER NAME = preston
 76e71-sht-plan.dgn
 PLOT SCALE = 50.0000 / 1"
 PLOT DATE = 5/18/2011

DESIGNED -
 DRAWN -
 CHECKED -
 DATE -

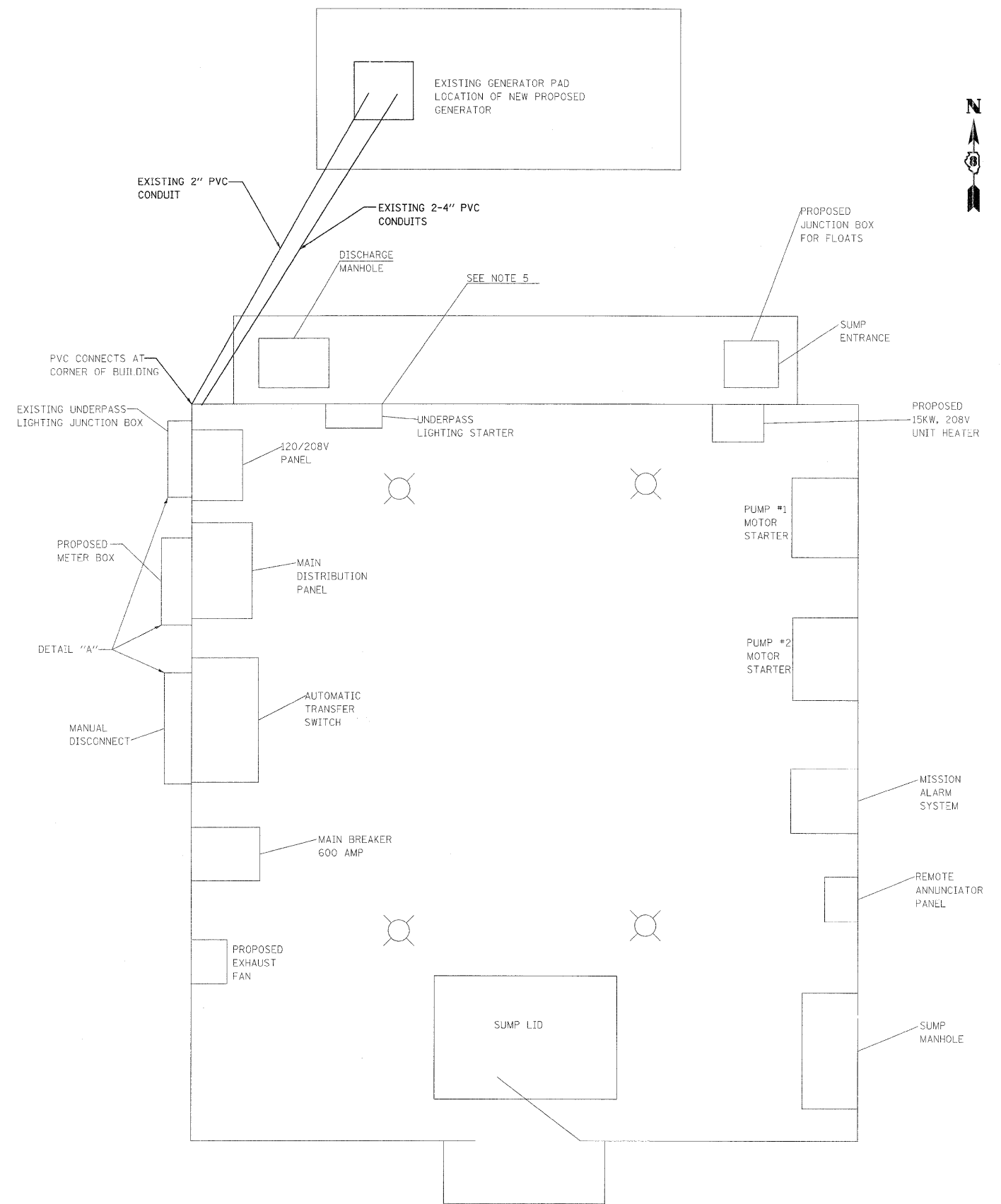
REVISED -
 REVISED -
 REVISED -
 REVISED -

**STATE OF ILLINOIS
 DEPARTMENT OF TRANSPORTATION**

PROPOSED MECHANICAL/ELECTRICAL

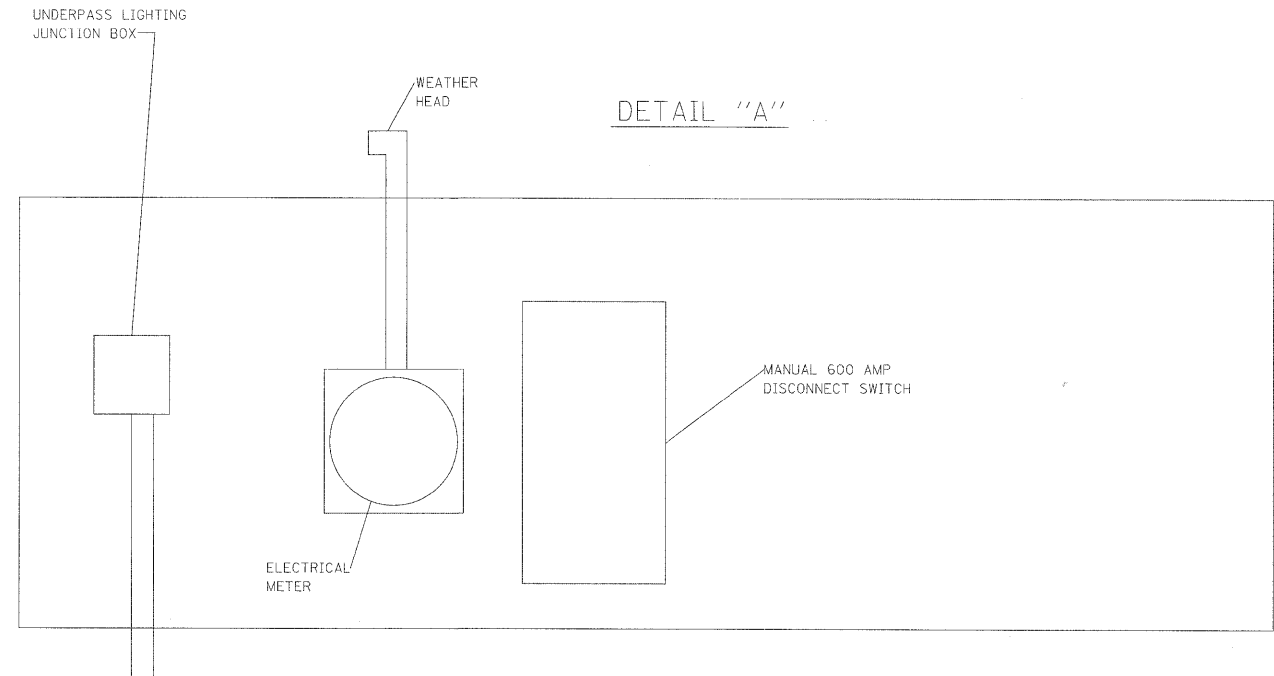
F.A.P. RTE. 805	SECTION 8Z-T-1	COUNTY MARION	TOTAL SHEETS 12	SHEET NO. 7
CONTRACT NO. 76E71				
FED. ROAD DIST. NO. ILLINOIS FED. AID PROJECT				

SCALE: SHEET NO. OF SHEETS STA. TO STA.

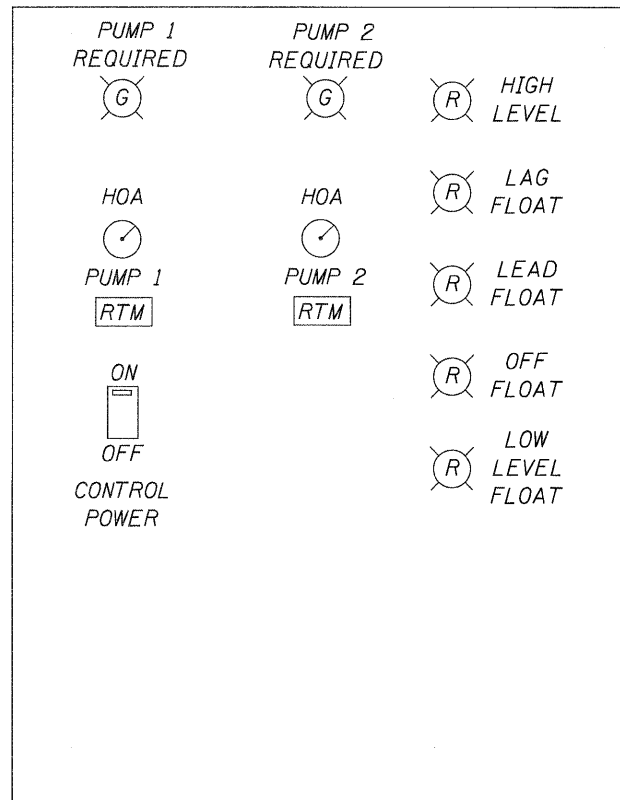


NOTES:

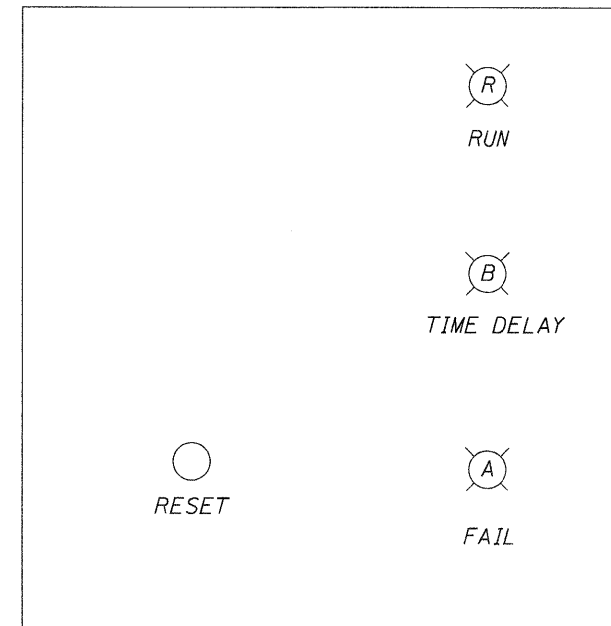
1. RESIDENT ENGINEER TO DETERMINE EXACT LOCATION OF EQUIPMENT.
2. CONTRACTOR WILL CONTACT AMEREN ILLINOIS PRIOR TO BIDDING AND DURING CONSTRUCTION TO COORDINATE ALL WORK TO ABIDE BY ALL REQUIREMENTS SET FORTH BY AMEREN ILLINOIS.
3. ALL EXISTING EQUIPMENT BELONGING TO AMEREN ILLINOIS WILL BE RETURNED TO AMEREN ILLINOIS BY CONTRACTOR.
4. CONTRACTOR WILL INSTALL 4 WALLPACK OUTSIDE LIGHTS, ONE ON EACH SIDE OF BUILDING. EXACT LOCATION TO BE DETERMINED BY RESIDENT ENGINEER. WALLPACK LIGHTS SHALL BE HUBBELL OUTDOOR LIGHTING PGM3 150 WATT HPS 120VAC CWA-HPF BALLAST FIXTURE OR EQUIVALENT. ONE PHOTOCELL SHALL CONTROL ALL 4 LIGHTS.
5. CONTRACTOR WILL INSTALL NEW LIGHTING CONTACTOR LOCATED INSIDE OF PUMP STATION. EXISTING LIGHTING CONTACTOR BOX WILL BECOME A JUNCTION BOX FOR THE UNDERPASS LIGHTING. NEW LIGHTING CONTACTOR WILL BE 60AMP.



FILE NAME =	USER NAME = prestonne	DESIGNED -	REVISED -	STATE OF ILLINOIS DEPARTMENT OF TRANSPORTATION	ELECTRICAL SECTIONS			F.A.P. RTE.	SECTION	COUNTY	TOTAL SHEETS	SHEET NO.
os:\pwork\pidot\prestonne\d0247326\d876e71-sh1-plan.dgn	76e71-sh1-plan.dgn	DRAWN -	REVISED -					805	8Z-T-1	MARION	12	8
PLOT SCALE = 50.0000' / 1"		CHECKED -	REVISED -					CONTRACT NO. 76E71				
PLOT DATE = 5/18/2011		DATE -	REVISED -					FED. ROAD DIST. NO. ILLINOIS FED. AID PROJECT				
				SCALE:	SHEET NO.	OF	SHEETS	STA.	TO STA.			

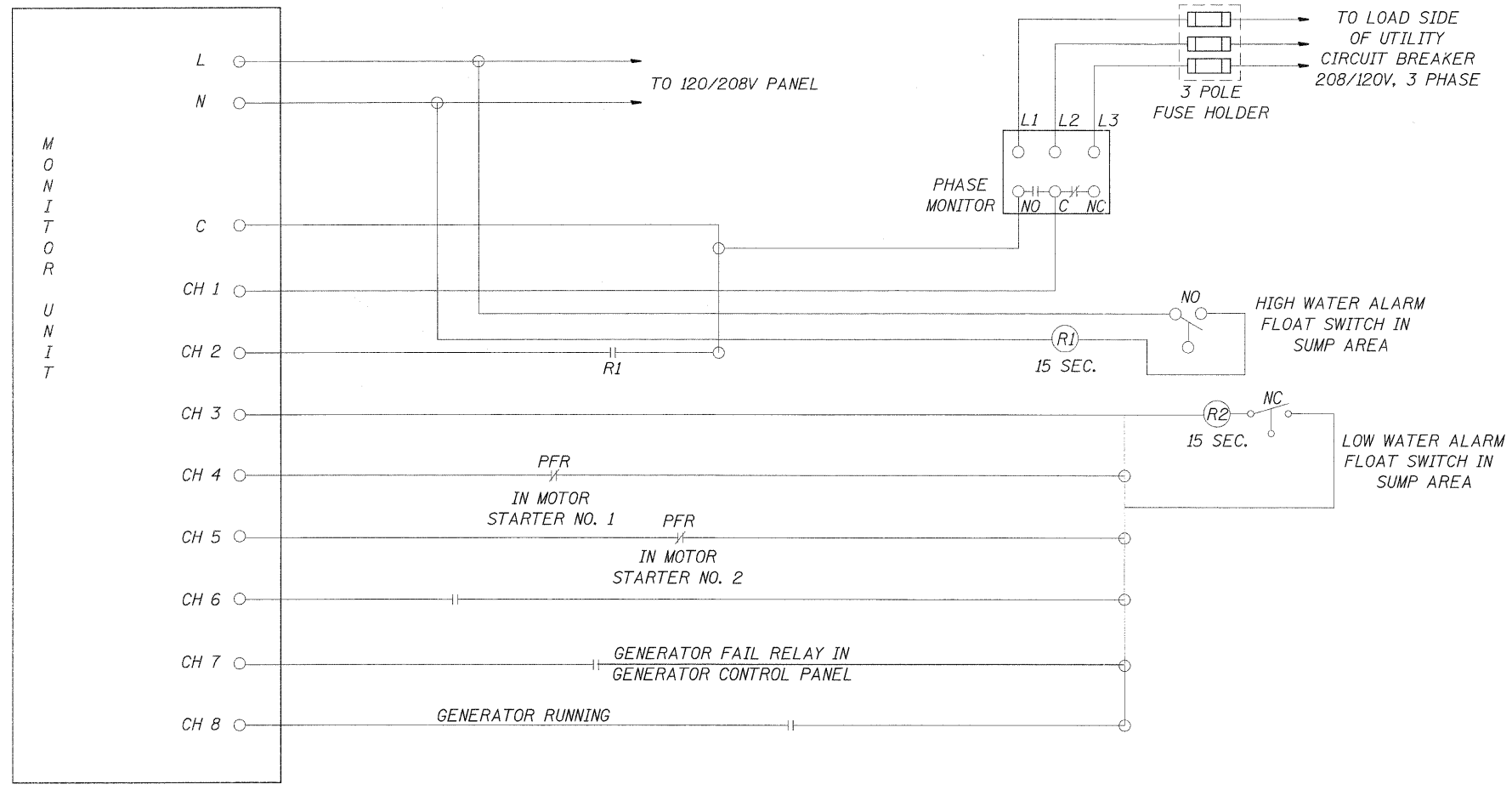


DETAIL A
PUMP CONTROL PANEL



DETAIL B
MOTOR STARTER ENCLOSURE

FILE NAME =	USER NAME = alfordb	DESIGNED -	REVISED -	STATE OF ILLINOIS DEPARTMENT OF TRANSPORTATION	CONTROL PANEL AND MOTOR STARTER DETAILS			F.A.P. RTE.	SECTION	COUNTY	TOTAL SHEETS	SHEET NO.
ct:\pw_work\pwrtdot\alfordb\0247386\d876b71\shd-plan.dgn		DRAWN -	REVISED -					805	8Z-T-1	MARION	12	10
		CHECKED -	REVISED -		SCALE: SHEET NO. OF SHEETS STA. TO STA.			CONTRACT NO. 76E71				
		DATE -	REVISED -		FED. ROAD DIST. NO. [ILLINOIS] FED. AID PROJECT							



- CHANNEL 1: UTILITY POWER LOSS (OPEN IS ALARM)
- CHANNEL 2: HIGH WATER ALARM (CLOSED IS ALARM)
- CHANNEL 3: LOW WATER ALARM
- CHANNEL 4: PUMP NO. 1 FAILURE (OPEN IS ALARM)
- CHANNEL 5: PUMP NO. 2 FAILURE (OPEN IS ALARM)
- CHANNEL 6:
- CHANNEL 7: GENERATOR FAILURE (CLOSED IS ALARM)
- CHANNEL 8: GENERATOR RUNNING

- NOTES:**
- 1) RELAYS R1 AND R2 SHALL BE TIME DELAY ADJUSTABLE FROM 1 TO 180 SECONDS.
 - 2) ALARM INITIATION CIRCUITS SHALL BE DESIGNED TO PREVENT FALSE ALARMS DURING POWER FAILURES.
 - 3) CONTRACTOR TO DETERMINE IF ALARMS ARE EITHER NORMALLY OPEN OR NORMALLY CLOSED PER CABINET MANUFACTURER.

FILE NAME =	USER NAME = prestonme	DESIGNED -	REVISED -	STATE OF ILLINOIS DEPARTMENT OF TRANSPORTATION	MONITOR PANEL PARTIAL WIRING DIAGRAM			F.A.P. RTE.	SECTION	COUNTY	TOTAL SHEETS	SHEET NO.
es\pw\work\psidot\prestonme\d0247305\d876e71-sht-plan.dgn	PLOT SCALE = 50,0000 ' / in.	DRAWN -	REVISED -					805	BZ-T-1	MARION	12	12
	PLOT DATE = 5/18/2011	CHECKED -	REVISED -		SCALE: SHEET NO. OF SHEETS STA. TO STA.			CONTRACT NO. 76E71				
		DATE -	REVISED -		FED. ROAD DIST. NO. ILLINOIS FED. AID PROJECT							