

F.A.I. RTE.	SECTION	COUNTY	TOTAL SHEETS	SHEET NO.
255	60-(7, 8) RS-1	MADISON	29	1
		ILLINOIS	CONTRACT NO. 76E98	

STATE OF ILLINOIS
DEPARTMENT OF TRANSPORTATION

DIVISION OF HIGHWAYS

**PROPOSED
HIGHWAY PLANS**

F.A.I. ROUTE -255 (I-255)
SECTION 60-(7, 8) RS-1,
I-255 RESURFACING
ST. CLAIR/MADISON COUNTY

C-98-060-11

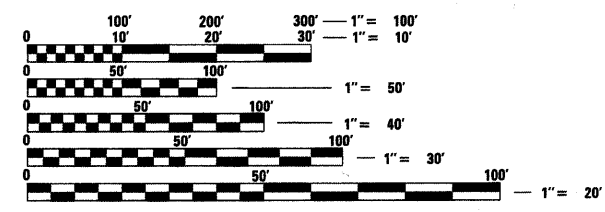
T2N R8W
T3N R8W

INDEX OF SHEETS

- 1 COVER SHEET
- 2 GENERAL NOTES
- 3 SUMMARY OF QUANTITIES
- 4-9 TYPICAL SECTION SHEETS
- 10 SCHEDULE OF MATERIALS
- 11-15 RESURFACING PLAN SHEETS
- 16-23 STAGING AND TRAFFIC CONTROL SHEETS
- 24-28 PAVEMENT MARKING PLAN SHEETS
- 29 DETAIL SHEET

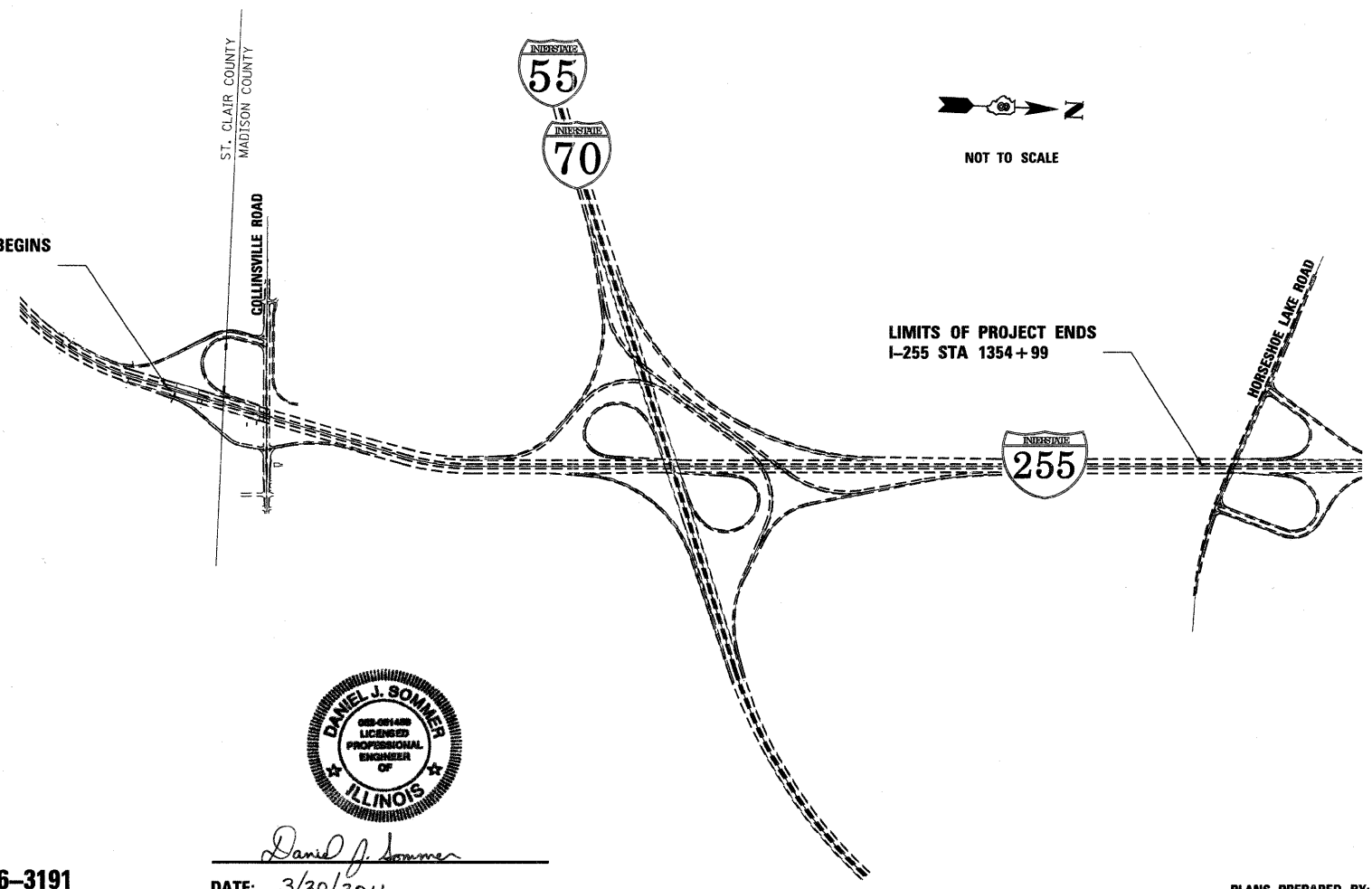


2011 ADT = 49,800
2031 ADT = 60,800



FULL SIZE PLANS HAVE BEEN PREPARED USING STANDARD ENGINEERING SCALES. REDUCED SIZED PLANS WILL NOT CONFORM TO STANDARD SCALES. IN MAKING MEASUREMENTS ON REDUCED PLANS, THE ABOVE SCALES MAY BE USED.

J.U.L.I.E.
JOINT UTILITY LOCATION INFORMATION FOR EXCAVATION
1-800-892-0123
OR 811



Daniel J. Sommer
DATE: 3/30/2011
LICENSE EXPIRES 11/30/2011

PROJECT ENGINEER: DANIEL SOMMER 618-346-3191
PROJECT MANAGER: MICHAEL PRITCHETT 618-346-3180

CONTRACT NO. 76E98

GROSS LENGTH = 12,273 FT. = 2.32 MILE
NET LENGTH = 12,273 FT. = 2.32 MILE

PLANS PREPARED BY:
CH2MHILL
1034 South Brentwood Blvd, Suite 2200, St. Louis, MO 63117 Tel: (314) 421-0900

APPROXIMATE LOCATION OF ROADWAY IS:
LATITUDE: 38.672744
LONGITUDE: -90.029515

STATE OF ILLINOIS
DEPARTMENT OF TRANSPORTATION
DIVISION OF HIGHWAYS

SUBMITTED March 31 20 11
Mary C. Jamie
DEPUTY DIRECTOR OF HIGHWAYS, REGION ENGINEER

May 13 20 11
Scott E. Still P.E.
acting ENGINEER OF DESIGN AND ENVIRONMENT

May 13 20 11
Christine M. Reed
DIRECTOR OF HIGHWAYS, CHIEF ENGINEER

**PRINTED BY THE AUTHORITY
OF THE STATE OF ILLINOIS**