

STATE OF ILLINOIS  
DEPARTMENT OF TRANSPORTATION  
DIVISION OF HIGHWAYS

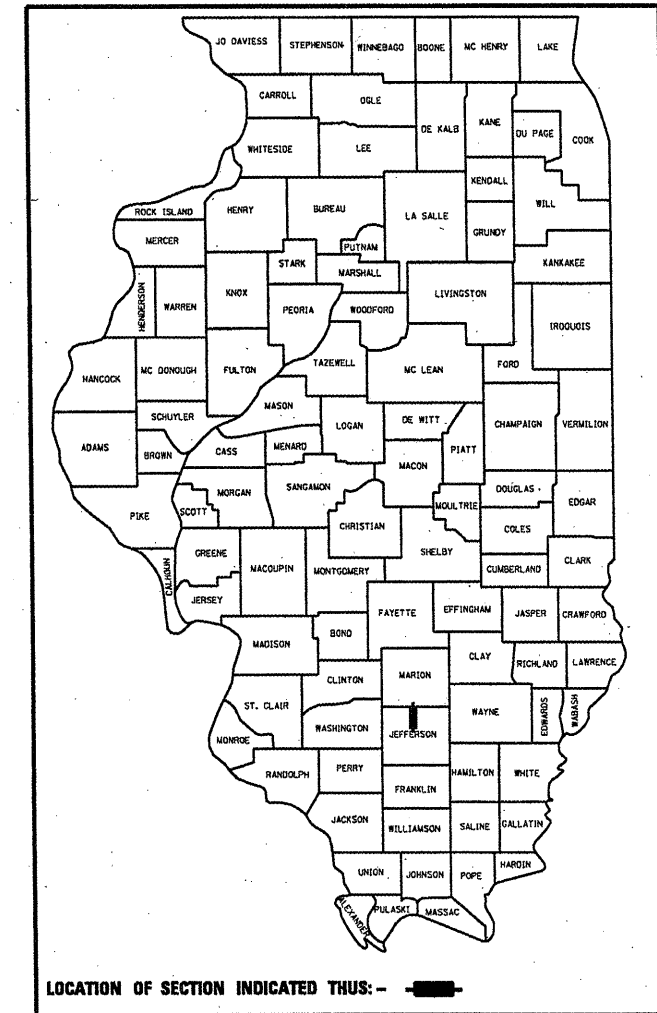
**PROPOSED  
HIGHWAY PLANS**

ROUTE FAS 2826 (IL 37)  
SECTION (109RS-3, 110RS-5 (110-2)RS-2  
PROJECT ACRS-2826(106)  
TYPE of IMPROVEMENT 3P  
JEFFERSON COUNTY

F.A. RTE.	SECTION	COUNTY	TOTAL SHEETS	SHEET NO.
•	••	JEFFERSON	25	1
		ILLINOIS	CONTRACT NO. 78185	

• FAS 2826  
•• (109RS-2, 110RS-2, 110-2RS)

D-99-042-10

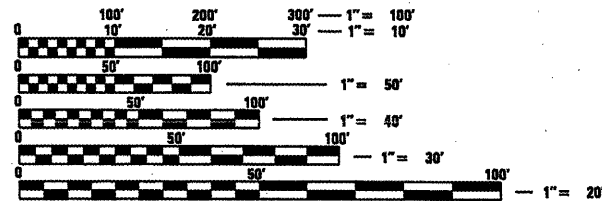


FOR INDEX OF SHEETS, SEE SHEET NO. 3

ADT (2011)  
PV = 3,409  
MU = 41  
SU = 155  
TRUCKS = 5.4%

EQUATION STATION:  
EQ. STA. 579+53.1 (BK) = STA. 577+57.5 (AH)  
EQ. STA. 627+43.1 (BK) = STA. 625+82.1 (AH)  
STA. 836+44.25 TO 837+15.75 (OMISSION)

TOWNSHIP - ROME



FULL SIZE PLANS HAVE BEEN PREPARED USING STANDARD ENGINEERING SCALES. REDUCED SIZED PLANS WILL NOT CONFORM TO STANDARD SCALES. IN MAKING MEASUREMENTS ON REDUCED PLANS, THE ABOVE SCALES MAY BE USED.

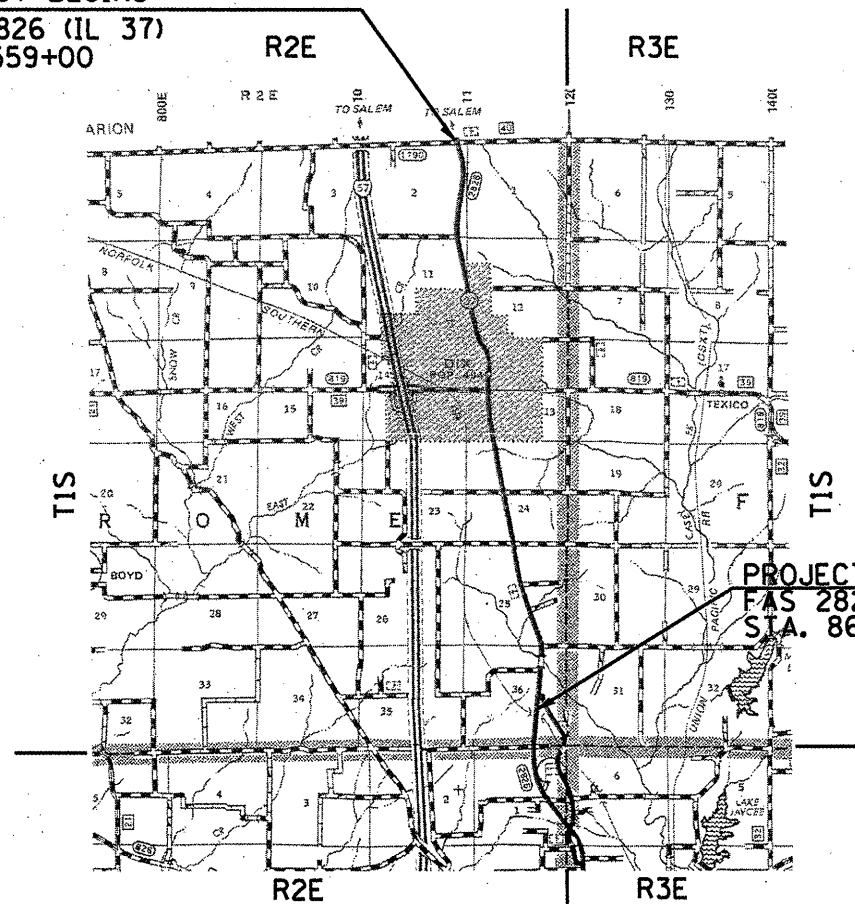
J.U.L.I.E.  
JOINT UTILITY LOCATION INFORMATION FOR EXCAVATION  
1-800-892-0123  
OR 811

PROJECT ENGINEER: CHARLES STEIN 618-551-5210  
PROJECT MANAGER: JULIO AYBAR 618-351-5215

CONTRACT NO. 78185

C-99-042-10.

PROJECT BEGINS  
FAS 2826 (IL 37)  
STA. 559+00



PROJECT ENDS  
FAS 2826 (IL 37)  
STA. 864+27.79

GROSS LENGTH = 30,892.85 FT. = 5.85 MILE  
NET LENGTH = 30,812.85 FT. = 5.84 MILE

STATE OF ILLINOIS  
DEPARTMENT OF TRANSPORTATION  
DIVISION OF HIGHWAYS

SUBMITTED March 17, 2011

M. C. Lami  
DEPUTY DIRECTOR OF HIGHWAYS, REGION ENGINEER

May 13, 2011

Scott E. Stitt, P.E.  
ENGINEER OF DESIGN AND ENVIRONMENT

May 13, 2011

Christine M. Reed  
DIRECTOR OF HIGHWAYS, CHIEF ENGINEER

**PRINTED BY THE AUTHORITY  
OF THE STATE OF ILLINOIS**