

STATE OF ILLINOIS
DEPARTMENT OF TRANSPORTATION
DIVISION OF HIGHWAYS

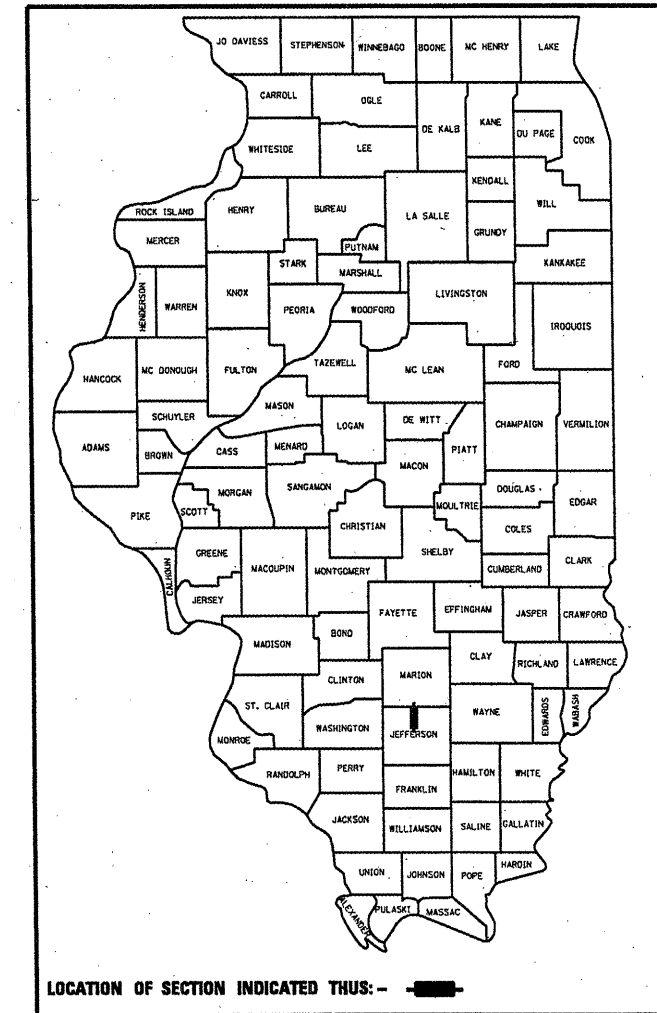
**PROPOSED
HIGHWAY PLANS**

ROUTE FAS 2826 (IL 37)
SECTION (109RS-3, 110RS-5 (110-2)RS-2
PROJECT ACRS-2826(106)
TYPE of IMPROVEMENT 3P
JEFFERSON COUNTY

F.A. RTE.	SECTION	COUNTY	TOTAL SHEETS	SHEET NO.
•	••	JEFFERSON	25	1
ILLINOIS CONTRACT NO. 78185				

• FAS 2826
•• (109RS-2, 110RS-2, 110-2RS)

D-99-042-10



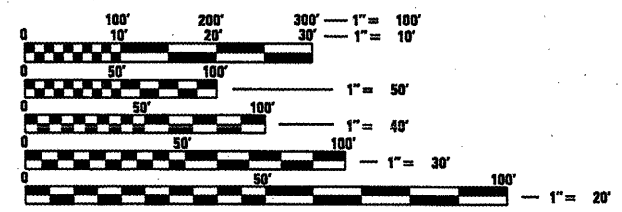
LOCATION OF SECTION INDICATED THUS: - [thick line] -

FOR INDEX OF SHEETS, SEE SHEET NO. 3

ADT (2011)
PV = 3,409
MU = 41
SU = 155
TRUCKS = 5.4%

EQUATION STATION:
EQ. STA. 579+53.1 (BK) = STA. 577+57.5 (AH)
EQ. STA. 627+43.1 (BK) = STA. 625+82.1 (AH)
STA. 836+44.25 TO 837+15.75 (OMISSION)

TOWNSHIP - ROME



FULL SIZE PLANS HAVE BEEN PREPARED USING STANDARD ENGINEERING SCALES. REDUCED SIZED PLANS WILL NOT CONFORM TO STANDARD SCALES. IN MAKING MEASUREMENTS ON REDUCED PLANS, THE ABOVE SCALES MAY BE USED.

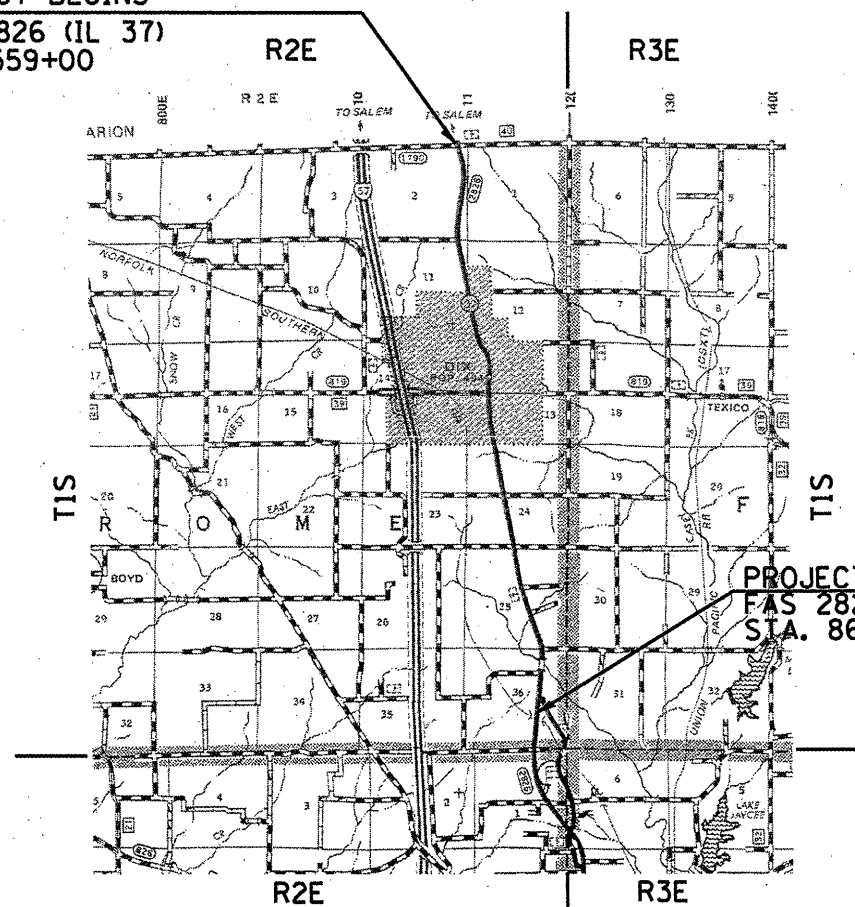
J.U.L.I.E.
JOINT UTILITY LOCATION INFORMATION FOR EXCAVATION
1-800-892-0123
OR 811

PROJECT ENGINEER: CHARLES STEIN 618-551-5210
PROJECT MANAGER: JULIO AYBAR 618-351-5215

CONTRACT NO. 78185

C-99-042-10.

PROJECT BEGINS
FAS 2826 (IL 37)
STA. 559+00



PROJECT ENDS
FAS 2826 (IL 37)
STA. 864+27.79

GROSS LENGTH = 30,892.85 FT. = 5.85 MILE
NET LENGTH = 30,812.85 FT. = 5.84 MILE

STATE OF ILLINOIS
DEPARTMENT OF TRANSPORTATION
DIVISION OF HIGHWAYS

SUBMITTED March 17, 2011
M. C. Hamel
DEPUTY DIRECTOR OF HIGHWAYS, REGION ENGINEER

May 13, 2011
Scott E. Stitt, P.E.
acting ENGINEER OF DESIGN AND ENVIRONMENT

May 13, 2011
Christine M. Reed
DIRECTOR OF HIGHWAYS, CHIEF ENGINEER

PRINTED BY THE AUTHORITY
OF THE STATE OF ILLINOIS

INDEX OF SHEETS

SHEET NO.	DESCRIPTION
1	COVER SHEET
2	SIGNATURE SHEET
3	INDEX OF SHEETS, HIGHWAY STANDARDS, GENERAL NOTES
4	MIXTURE REQUIREMENTS / STRUCTURE INFORMATION SCHEDULE
5	SUMMARY OF QUANTITIES
6-7	TYPICAL SECTIONS
8-9	RESURFACING SCHEDULE
10	PAVEMENT MARKING SCHEDULE
11-20	PLAN LAYOUT FOR FAS 2826 (IL 37) STA 559+00 TO STA 864+27.79
21	DETAIL: TEMPORARY RAMP, SAFETY EDGE
22	DETAIL: SIDE ROADS
23	DETAIL: PAVEMENT TRANSITION
24	STANDARD DETAILS: TEMP HOT-MIX ASPHALT TRANSITIONS
25	STANDARD DETAILS: ROUGH GROOVED SURFACE SIGN; UNEVEN LANES

HIGHWAY STANDARDS

442201-03	701311-03
701011-02	701336-06
701201-04	701901-01
701301-04	780001-02
701306-03	781001-03

GENERAL NOTES

THE THICKNESS OF BITUMINOUS MIXTURE SHOWN ON THE PLANS IS THE NOMINAL THICKNESS. DEVIATIONS FROM THE NOMINAL THICKNESS WILL BE PERMITTED WHEN SUCH DEVIATION OCCURS DUE TO IRREGULARITIES IN THE EXISTING SURFACE OR BASE ON WHICH THE BITUMINOUS MIXTURE IS PLACED.

FACTORS USED FOR ESTIMATING PLAN QUANTITIES ARE AS FOLLOWS AND SHALL NOT BE USED FOR THE BASIS OF FINAL QUANTITIES EXCEPT FOR QC/QA OF BITUMINOUS MIXTURES:

ALL HOT-MIX ASPHALT.....2.016 TONS/CU. YD.

ALL AGGREGATE.....2.05 TONS/CU. YD.

BITUMINOUS MATERIALS (PRIME COAT)

ON PAVEMENT....0.09 GALS/SQ. YD.

ON AGG. SURFACE....0.32 GALS/SQ. YD.

AGGREGATE (PRIME COAT).....0.0015 TONS/SQ. YD.

THE QUANTITY OF SHORT TERM PAVEMENT MARKING SHOWN IN THE PLANS WAS BASED ON ONE APPLICATION EACH FOR THE PRIME COAT, SURFACE COURSE AND LEVELING BINDER.

PRIOR TO PLACEMENT OF THE FINAL PAVEMENT MARKINGS, THE RESIDENT ENGINEER SHOULD CONTACT THE BUREAU OF OPERATIONS AND ARRANGE FOR INSPECTION AND APPROVAL OF THE PAVEMENT MARKING LAYOUT.

THE CONTRACTOR SHALL STAMP STATIONING IN THE PROPOSED BITUMINOUS MATS AT 300 FT. INTERVALS ON ALTERNATING SIDES OF THE PAVEMENT AND AS DIRECTED BY THE ENGINEER. THE STATION SYMBOL STAMPS USED SHALL BE FURNISHED BY THE CONTRACTOR. THEY SHALL BE 5 1/2 "TALL OF A DESIGN APPROVED BY THE ENGINEER AND SHALL REMAIN THE PROPERTY OF THE CONTRACTOR.

UNLESS OTHERWISE DIRECTED BY THE ENGINEER, BITUMINOUS RESURFACING SHALL BE PLACED IN A SEQUENCE THAT WILL MINIMIZE THE TIME THE CENTER -LINE EDGE IS EXPOSED TO TRAFFIC.

QUANTITIES SHOWN IN THE PLANS FOR PATCHING ARE ESTIMATES. THE ACTUAL AMOUNT OF PATCHING REQUIRED SHALL BE DETERMINED BY THE ENGINEER IN THE FIELD.

THE CONTRACTOR SHALL COMPLETE ALL PATCHING PRIOR TO THE BITUMINOUS SURFACE REMOVAL.

RECLAIMED ASPHALT PAVEMENT (RAP) WILL NOT BE ALLOWED FOR USE AS AGGREGATE IN AGGREGATE SHOULDERS, TYPE B.

• FAS 2826

•• (109RS-2, 110RS-2, 110-2RS)

FILE NAME =	USER NAME = ejobr.js	DESIGNED -	REVISED -	STATE OF ILLINOIS DEPARTMENT OF TRANSPORTATION	INDEX OF SHEETS, STANDARDS, GEN NOTES	F.A. RTE.	SECTION	COUNTY	TOTAL SHEETS	SHEET NO.
ca:\pvt\work\pwt\dot\eybor.js\d0256359\h178	85-shr-plandgn	DRAWN -	REVISED -					JEFFERSON	25	3
	PLOT SCALE = 100.2434' / IN.	CHECKED -	REVISED -							
	PLOT DATE = 3/17/2011	DATE -	REVISED -							
						SCALE:	SHEET NO. OF SHEETS	STA. TO STA.	ILLINOIS FED. AID PROJECT	

MIXTURE REQUIREMENTS SHALL BE PREPARED AS DIRECTED BELOW:

MAINLINE SURFACE COURSE

LOCATION(S):	HMA SURFACE COURSE
MIXTURE USE(S):	HMA SURFACE COURSE, MIX D, N90
AC/PG:	PG64-22
RAP % (MAX):	10
DESIGN AIR VOIDS:	4.0%, 90 GYRATION DESIGN
MIXTURE COMPOSITION: (GRADATION MIXTURE)	IL-9.5MM OR IL 12.5 MM
FRICTION AGGREGATE:	D SURFACE

MAINLINE LEVELING BINDER

LOCATION(S):	HMA LEVELING BINDER
MIXTURE USE(S):	POLYMERIZED HMA LEVELING BINDER, N50
AC/PG:	SBS PG76-22
RAP % (MAX):	0
DESIGN AIR VOIDS:	4.0%, 50 GYRATION DESIGN
MIXTURE COMPOSITION: (GRADATION MIXTURE)	IL-4.75MM
FRICTION AGGREGATE:	NONE

PATCHING SPECS

LOCATION(S):	CLASS D PATCHING
MIXTURE USE(S):	HOT-MIX ASPHALT BINDER COURSE, N90, IL-19.0
AC/PG:	PG64-22
RAP % (MAX):	10
DESIGN AIR VOIDS:	4.0%, 90 GYRATION DESIGN
MIXTURE COMPOSITION: (GRADATION MIXTURE)	IL 19-0
FRICTION AGGREGATE:	NONE

HMA SHOULDER MIX

LOCATION(S):	HMA SHOULDERS
MIXTURE USE(S):	HMA SURFACE COURSE, MIX D, N90
AC/PG:	PG64-22
RAP % (MAX):	10
DESIGN AIR VOIDS:	4.0%, 90 GYRATION DESIGN
MIXTURE COMPOSITION: (GRADATION MIXTURE)	IL-9.5MM OR IL 12.5 MM
FRICTION AGGREGATE:	D SURFACE

STRUCTURE INFORMATION SCHEDULE

STRUCTURE NO.	STATION	INV. RATING	OPR. RATING	SUFF. RATING
SN 041-0107	836+80	28.3	49.5	95.8
SN 041-0039	865+05.20	31.7	47.2	96.5

SN 041-0039 MTD ALLOWANCE: A LOADED MTD IS ALLOWED OVER THIS STRUCTURE

SN 041-0107 MTD ALLOWANCE: A LOADED MTD IS ALLOWED OVER THIS STRUCTURE

* FAS 2826
** (103RS-2, 110RS-2, 110-2RS)

FILE NAME =	USER NAME = cyber.js	DESIGNED -	REVISED -	STATE OF ILLINOIS DEPARTMENT OF TRANSPORTATION	MIXTURE REQUIREMENTS		F.A. RTE.	SECTION	COUNTY	TOTAL SHEETS	SHEET NO.
ct:\pw\work\pww\dot\cyber.js\d025639\l178	95-sh1-pln.dgn	DRAWN -	REVISED -		SCALE: _____	SHEET NO. _____ OF _____ SHEETS	STA. _____ TO STA. _____	JEFFERSON	25	4	
	PLOT SCALE = 100.0000' / 1" IN.	CHECKED -	REVISED -				CONTRACT NO. 78185				
	PLOT DATE = 4/5/2011	DATE -	REVISED -				ILLINOIS FED. AID PROJECT				

SUMMARY OF QUANTITIES

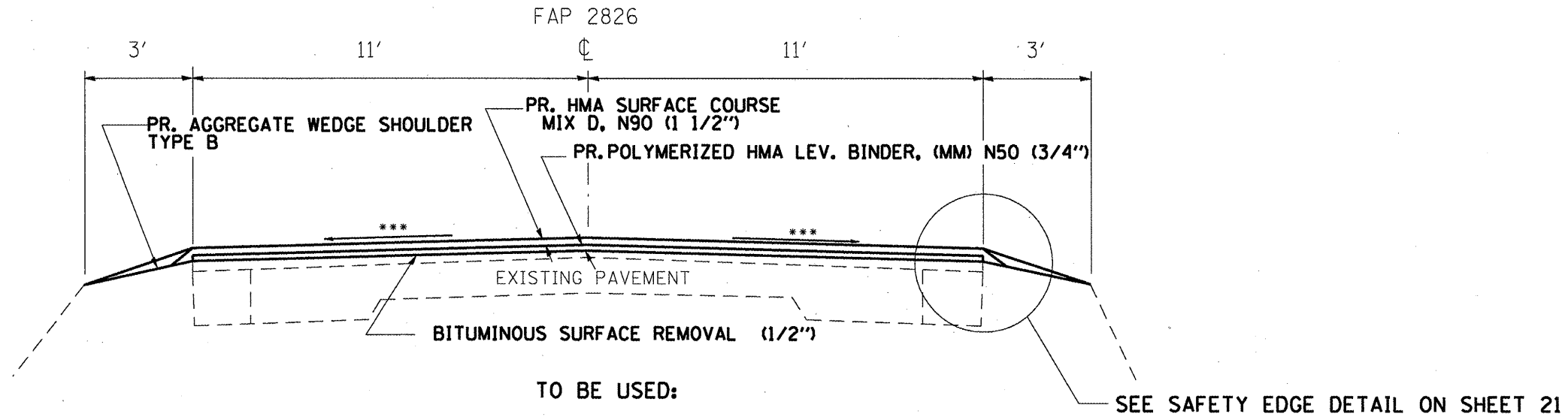
FAS 2826 (IL 37)
 80% FED/ 20% STATE
 RESURFACING
 JEFFERSON
 CONSTR. TYPE
 CODE 0005

CODE NUMBER	ITEM DESCRIPTION	UNIT	TOTAL QUANTITY
Z0034105	MATERIAL TRANSFER DEVICE	TON	9571
X4401198	SURFACE REMOVAL, VARIABLE DEPTH <i>(HOT-MIX ASPHALT)</i>	SQ YD	342
40600115	POLYMERIZED BITUMINOUS MATERIALS (PRIME COAT)	GALLON	14169
40600300	AGGREGATE (PRIME COAT)	TON	230
40600825	POLYMERIZED LEVELING BINDER (MACHINE METHOD), N50	TON	3198
40600982	SURFACE REMOVAL - BUTT JOINT <i>(HOT-MIX ASPHALT)</i>	SQ YD	309
40600990	TEMPORARY RAMP	SQ YD	49
40603345	HOT-MIX ASPHALT SURFACE COURSE, MIXTURE "D", N90	TON	6373
40800050	INCIDENTAL SURFACING <i>(HOT-MIX ASPHALT)</i>	TON	249
44000151	HOT-MIX ASPHALT SURFACE REMOVAL, 1/2"	SQ YD	67271
44000158	HOT-MIX ASPHALT SURFACE REMOVAL, 2 1/4"	SQ YD	8050
44201785	CLASS D PATCHES, TYPE I, 12 INCH	SQ YD	525
44201789	CLASS D PATCHES, TYPE II, 12 INCH	SQ YD	980
44201794	CLASS D PATCHES, TYPE III, 12 INCH	SQ YD	679
44201796	CLASS D PATCHES, TYPE IV, 12 INCH	SQ YD	336
48102100	AGGREGATE WEDGE SHOULDER, TYPE B	TON	1284
48203100	SHOULDERS <i>(HOT-MIX ASPHALT)</i>	TON	53
67000500	ENGINEER'S FIELD OFFICE, TYPE B	CAL MO	3
67100100	MOBILIZATION	L SUM	1
70100460	TRAFFIC CONTROL AND PROTECTION, STANDARD 701306	L SUM	1
70100600	TRAFFIC CONTROL AND PROTECTION, STANDARD 701336	L SUM	1
70300100	SHORT TERM PAVEMENT MARKING	FOOT	3088
70300220	TEMPORARY PAVEMENT MARKING - LINE 4"	FOOT	21510
70301000	WORK ZONE PAVEMENT MARKING REMOVAL	SQ FT	8118
* 78001110	PAINT PAVEMENT MARKING - LINE 4"	FOOT	83278
* 78100100	RAISED REFLECTIVE PAVEMENT MARKER	EACH	393
78300200	RAISED REFLECTIVE PAVEMENT MARKER REMOVAL	EACH	357

*SPECIALTY ITEM

• FAS 2826
 •• (109RS-2, 110RS-2, 110-2RS)

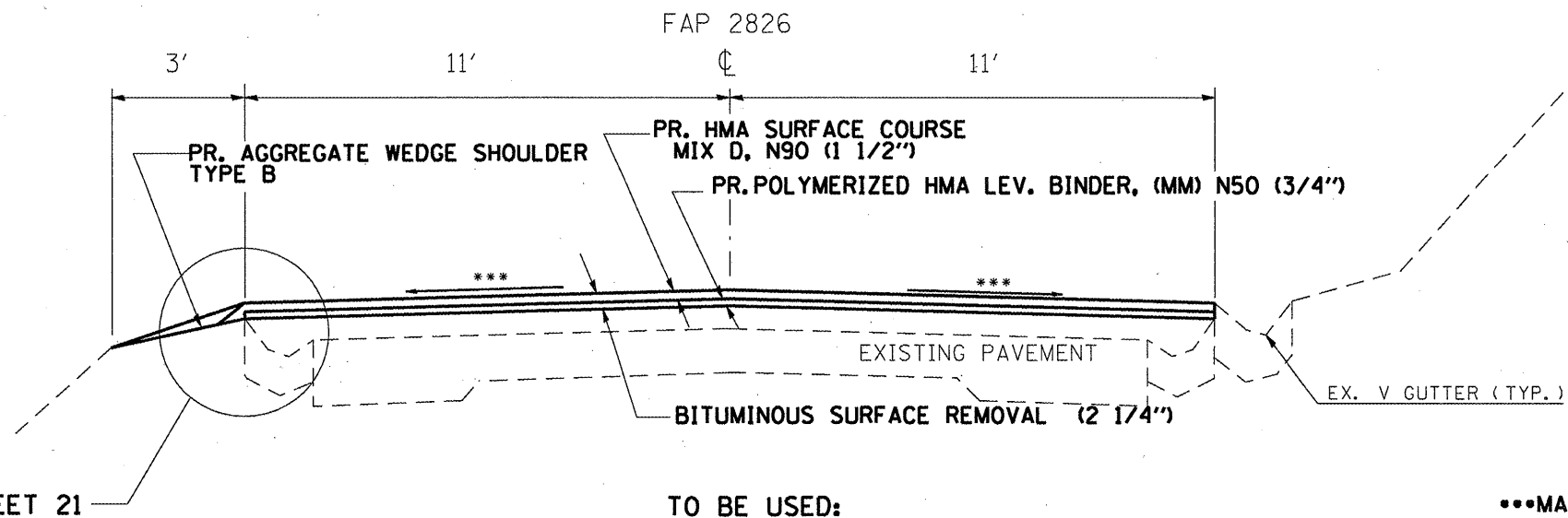
FILE NAME =	USER NAME = ojbcr.js	DESIGNED -	REVISED -	STATE OF ILLINOIS DEPARTMENT OF TRANSPORTATION	SUMMARY OF QUANTITIES			F.A. RTE.	SECTION	COUNTY	TOTAL SHEETS	SHEET NO.
c:\pvt_work\pvt\dot\ojbcr.js\d0256359\bl78	85-shr-plandgn	DRAWN -	REVISED -		SCALE: _____	SHEET NO. _____ OF _____ SHEETS	STA. _____ TO STA. _____	•	••	JEFFERSON	25	5
PLOT SCALE = 100.3351 / IN.	CHECKED -	REVISED -										
PLOT DATE = 3/21/2011	DATE -	REVISED -										CONTRACT NO. 78185
ILLINOIS FED. AID PROJECT												



TO BE USED:

STA. 559+00 TO STA. 579+53.1 (EQ. STA. BK)
 STA. 577+57.5 (EQ. STA. AH) TO STA. 627+43.1 (EQ. STA. BK)
 STA. 625+82.1 (EQ. STA. AH) TO STA. 631+10.15
 STA. 640+40 TO STA. 671+16.29
 STA. 691+80 TO STA. 836+44.25 (OMISSION)
 STA. 837+15.75 TO STA. 856+19.3

***MATCH EXISTING SLOPE



TO BE USED:

STA. 631+10.15 TO STA. 640+40
 STA. 671+16.29 TO STA. 677+22.86

***MATCH EXISTING SLOPE

EQUATION STATIONS:
 EQ. STA. 579+53.1 (BK) = STA. 577+57.5 (AH)
 EQ. STA. 627+43.1 (BK) = STA. 625+82.1 (AH)

STRUCTURE = 041-0107 (OMISSION)
 STA. 836+44.25 TO 837+15.75

FAS 2826
 (109RS-2, 110RS-2, 110-2RS)

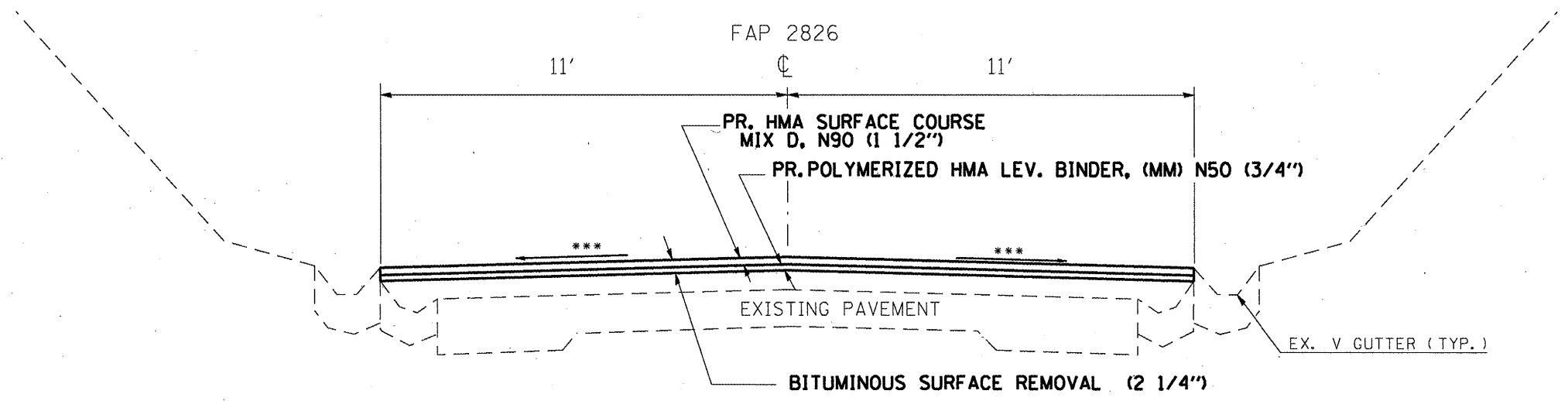
FILE NAME =	USER NAME = aybar.js	DESIGNED -	REVISED -
c:\pwork\pmsdot\aybar.js\d0256359\bl78185-ahs-plan.dgn		DRAWN -	REVISED -
PLOT SCALE = 100.3351' / IN.		CHECKED -	REVISED -
PLOT DATE = 3/21/2011		DATE -	REVISED -

STATE OF ILLINOIS
 DEPARTMENT OF TRANSPORTATION

TYPICAL SECTION

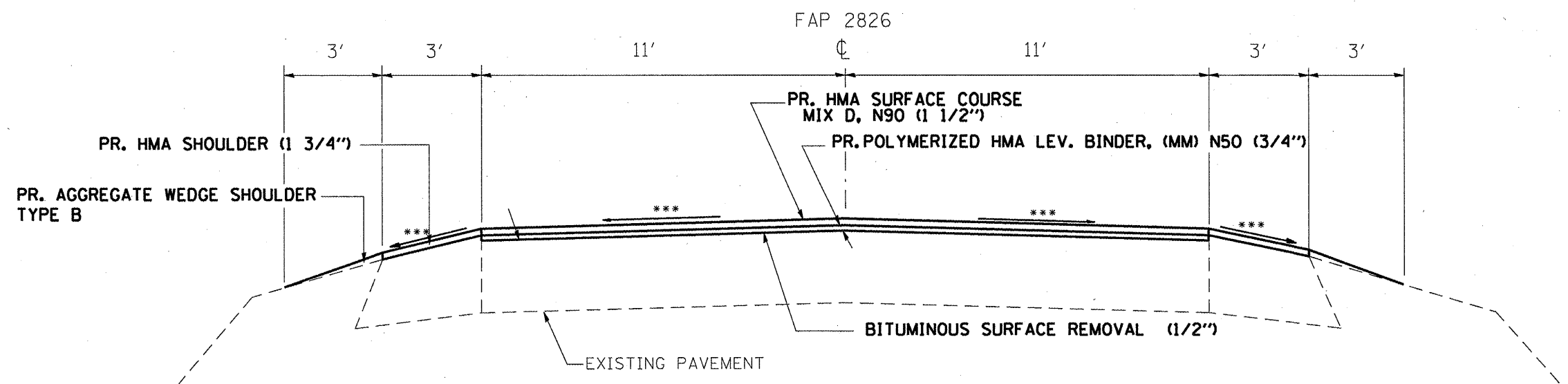
F.A. RTE.	SECTION	COUNTY	TOTAL SHEETS	SHEET NO.
..	..	JEFFERSON	25	6
CONTRACT NO. 78185			ILLINOIS FED. AID PROJECT	

SCALE: SHEET NO. OF SHEETS STA. TO STA.



TO BE USED:
 STA. 677+22.86 TO STA. 691+80

***MATCH EXISTING SLOPE



TO BE USED:
 STA. 856+19.3 TO STA. 864+27.79

***MATCH EXISTING SLOPE

• FAS 2826
 •• (109RS-2, 110RS-2, 110-2RS)

FILE NAME =	USER NAME = eybar.js	DESIGNED -	REVISED -
ct:\pwwork\pmsdot\eybar.js\d256359\bl7805-sh1-plan.dgn		DRAWN -	REVISED -
PLOT SCALE = 100.3351' / IN.		CHECKED -	REVISED -
PLOT DATE = 3/21/2011		DATE -	REVISED -

STATE OF ILLINOIS
 DEPARTMENT OF TRANSPORTATION

TYPICAL SECTION

F.A. RTE.	SECTION	COUNTY	TOTAL SHEETS	SHEET NO.
•	••	JEFFERSON	25	7
SCALE: _____			SHEET NO. ___ OF ___ SHEETS	
STA. _____ TO STA. _____			ILLINOIS FED. AID PROJECT	

CONTRACT NO. 78185

RESURFACING SCHEDULE

LOCATION STATION TO STATION	LENGTH FOR INFORMATIONAL PURPOSE ONLY (FT)	ROADWAY WIDTH (FT)	ROADWAY AREA (SQ YD)	HMA SURFACE REMOVAL (2 1/4")	HMA SURFACE REMOVAL (1/2")	TEMP RAMP (SQ YD)	HMA SURFACE REMOVAL BUTT JT. (SQ YD)	HMA SUR. CSE., MIX D. N 90 (1 1/2") (TON)	POLYM. LEVEL. BINDER, NSO (3/4") (TON)	BIT. MAT. (PRIME COAT) (GAL)	AGG. (PRIME COAT) (TON)	AGGREGATE SHLDRS., TY. B (TON)	HMA SURF. REM. VARIABLE DEPTH (SQ YD)	HMA SHOULDER (1 3/4") (TON)		
				(SQ YD)	(SQ YD)		(SQ YD)	(TON)	(TON)	(GAL)	(TON)	(TON)	(SQ YD)	(TON)		
FAS 2826 (IL 37) - STA. 559+00 TO STA. 864+27.79																
559+00.00 TO 579+53.10	2053.1	22.0	5019		5019	12	12	425	213	903	15.1	87				
Eq. Sta. 579+53.1 (bk) = Sta. 577+57.5 (ah)																
577+57.50 TO 627+43.10	4985.6	22.0	12187		12187			1031	517	2194	36.6	212				
Eq. Sta. 627+43.1 (bk) = Sta. 625+82.1 (ah)																
625+82.10			1291		1290.8			109	55	232	3.9	22				
631+10.15			2273	2273				192	97	409	6.8	40				
640+40.00			7520		7519.8			636	319	1354	22.6	131				
671+16.29			5777	5777				489	245	1040	17.3	100				
694+79.40			34625		34625.2	12	12	2930	1470	6233	103.9	602				
640+40.00													85.6			
630+75.15													85.6			
691+80.00													85.6			
670+81.29													85.6			
(Omission) Sta. 836+44.25 to 837+15.75																
837+15.75 TO 864+27.79	2712.0	22.0	6629		6629	12	12	561	281	1193	19.9					
837+15.75 TO 856+19.30	1903.6	22.0										81				
856+19.30 TO 864+27.79	808.5	22.0				12	12							52.8		
PROJECT TOTALS					8,049		67,271	49	49	6373	3198	13558.0	226.10	1276	342	53

• FAS 2826
•• (109RS-2, 110RS-2, 110-2RS)

ENTRANCE SCHEDULE

NUMBER	ENTRANCE TYPE	EXIST. SURFACE	EP WIDTH	WIDTH AT 4' OFFSET	ROADWAY AREA	INCIDENTAL HMA SURFACING	BIT. MAT. (PRIME COAT)	AGG. (PRIME COAT)	AGGREGATE WEDGE SHLDRS. TY. B
		FOR INFORMATIONAL PURPOSE ONLY							
		(FT)	(FT)	(SQ YD)	(TON)				
52	Private Ent.	Agg.	16.0	12.0	324	31	104	0.49	7
5	Private Ent.	Bit.	16.0	12.0	31	3	3	0.10	
1	Private Ent.	PPC	16.0	12.0	6	1	1	0.10	
8	Comm. Ent.	Agg.	39.0	35.0	132	12	42	0.20	1
2	Comm. Ent.	Bit.	39.0	35.0	33	3	3	0.10	
1	Comm. Ent.	PPC	39.0	35.0	16	1	1	0.02	
SUBTOTALS						51	154.0	1.01	8

SIDE ROADS SCHEDULE

LOCATION	EXIST. SURFACE	EP WIDTH	WIDTH AT 15' OFFSET	ROADWAY AREA	HOT-MIX ASP. SURF. REMOV. - BUTT JT.	INCIDENTAL HMA SURFACING	BIT. MAT. (PRIME COAT)	AGG. (PRIME COAT)			
	FOR INFORMATIONAL PURPOSE ONLY										
	(FT)	(FT)	(SQ YD)	(SQ YD)					(TON)	(GAL)	(TON)
FAS 2826 (IL 37)											
Lt.	Rileyville rd.	625+00.00	Oil & Chip	63.0	31.0	105		18	34	0.2	
Rt.	W. Lincoln St.	675+68.80	Oil & Chip	92.0	41.0	153		26	49	0.2	
Rt.	E. Lincoln St.	676+21.60	Oil & Chip	68.0	36.0	113		19	36	0.2	
Lt.	Meadow Ln.	715+28.80	Oil & Chip	78.0	32.0	130		22	42	0.2	
Lt.	Middle Rd.	776+00.80	Oil & Chip	50.0	18.0	83		14	27	0.1	
Rt.	Middle Rd.	776+00.81	Agg.	75.0	31.0	125		21	40	0.2	
Rt.	Beal Rd.	797+65.60	Oil & Chip	76.0	31.0	127		21	41	0.2	
Lt.	Beal Rd.	797+65.61	Oil & Chip	113.0	41.0	188		32	60	0.3	
Lt.	Goshen Meadows	800+82.40	Concrete	70.0	30.0	117	117	10	11	0.2	
Rt.	Sunflower Rd.	832+50.40	Oil & Chip	52.0	24.0	87		15	28	0.1	
Lt.	Violet Rd.	840+42.40	Oil & Chip	73.0	32.0	122		20	39	0.2	
Lt.	Ebenezer Rd.	849+40.00	Oil & Chip	70.0	30.0	117		20	37	0.2	
Lt.	Old Salem Rd	859+43.20	Bit.	86.0	38.0	143	143	12	13	0.2	
PROJECT TOTALS								260	249	457.0	2.50

* FAS 2826
** (109RS-2, 110RS-2, 110-2RS)

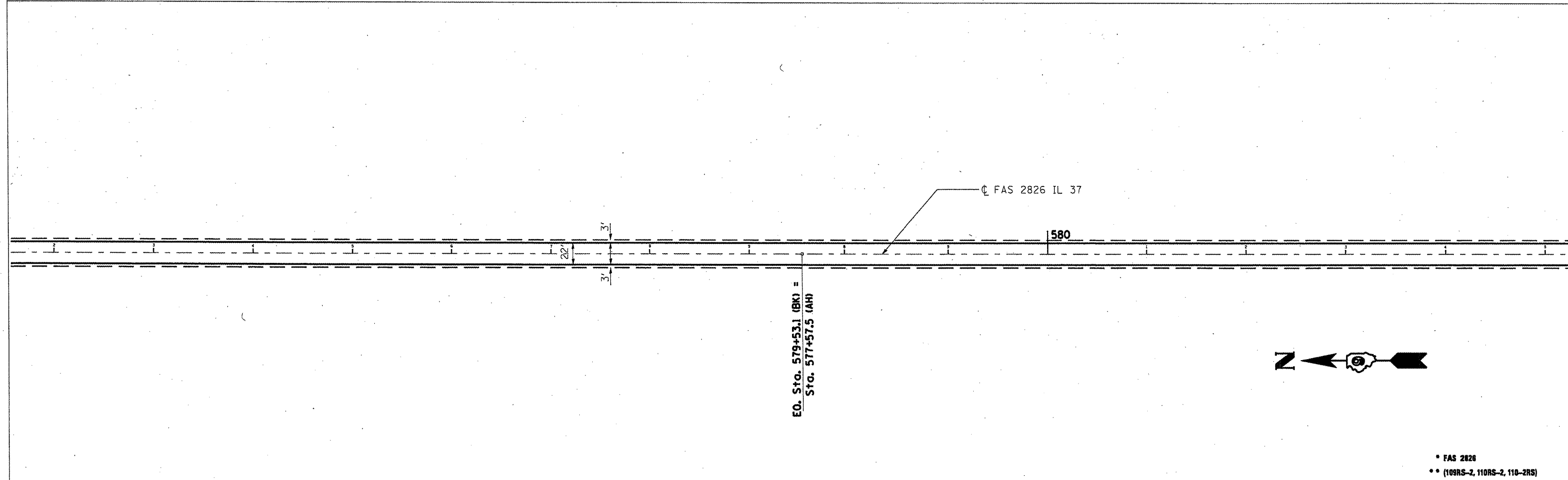
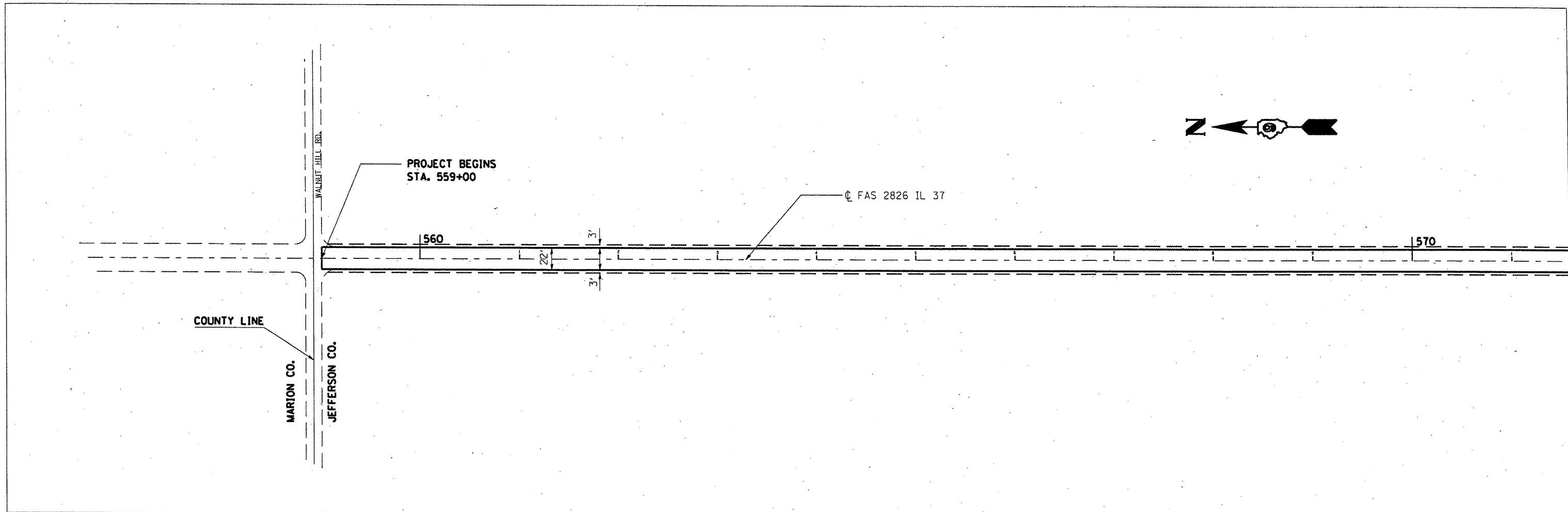
FILE NAME =	USER NAME = aybar-js	DESIGNED -	REVISED -	STATE OF ILLINOIS DEPARTMENT OF TRANSPORTATION	ENTRANCES AND SIDE ROADS SCHEDULES	F.A. RTE.	SECTION	COUNTY	TOTAL SHEETS	SHEET NO.
es\pv_vork\pwork\aybar-js\d2256399\bl78185-shr-plan.dgn		DRAWN -	REVISED -			*	**	JEFFERSON	25	9
PLOT SCALE = 100.0164' / IN.		CHECKED -	REVISED -							CONTRACT NO. 78185
PLOT DATE = 3/23/2011		DATE -	REVISED -		SCALE: _____	SHEET NO. _____ OF _____ SHEETS	STA. _____ TO STA. _____	ILLINOIS FED. AID PROJECT		

PAVEMENT MARKING SCHEDULE

STATION TO STATION				PAINT PAVEMENT MARKING			TEMPORARY	SHORT-TERM	NOTES
				4 INCH WHITE (EDGE LINE)	4 INCH YELLOW (NO PASS ZONE OR DBL. YELLOW)	4 INCH (SKIP-DASH)	4 INCH	4 INCH	
				FOOT	FOOT	FOOT	FOOT	FOOT	
MAINLINE: Sta. 559+00 TO Sta. 864+27.79									
	559+00.0	TO	579+53.1	2053.1					
	577+57.5	TO	627+43.1	4985.6					
	625+82.1	TO	864+27.8	23845.7					
LT	559+00.0	TO	572+95.0			349	349	3088	
RT	559+00.0	TO	575+93.0		1,693		1693		NPZ
LT	572+95.0	TO	579+53.1		658		658		NPZ
RT	575+93.0		579+53.1			90	90		
EO. STA. 579+53.1 (BK.) = 577+57.5 (AH.)									
LT	577+57.5	TO	584+96.4		739		739		NPZ
	577+57.5	TO	603+00.0			636	636		
RT	592+98.4	TO	606+01.0		1,303		1303		NPZ
LT	603+00.0	TO	617+93.0		1,493		1493		NPZ
	606+01.0	TO	627+43.1			536	536		
RT	621+93.0	TO	627+43.1		550		550		NPZ
EO. STA. 627+43.1 (BK.) = 625+82.1 (AH.)									
	625+82.1	TO	862+24.0			5,910	5,910		
RT	625+82.1	TO	631+33.2		551		551		NPZ
LT	631+33.2	TO	641+30.2		997		997		NPZ
RT	679+26.0	TO	685+27.0		601		601		NPZ
LT	685+27.0	TO	691+26.0		599		599		NPZ
RT	747+28.0	TO	754+29.0		701		701		NPZ
LT	757+30.0	TO	764+28.0		698		698		NPZ
RT	817+22.0	TO	829+24.0		1,202		1,202		NPZ
LT	829+24.0	TO	838+23.0		899		899		NPZ
RT	853+26.0		862+24.0		898		898		NPZ
LT	862+24.0	TO	864+27.8		204		204		NPZ
RT	862+24.0		864+27.8		204		204		NPZ
SUB-TOTALS MAINLINE				61,769	13,989	7,520	21,510	3,088	
TOTALS					83,278		21,510	3,088	

* FAS 2826
** (109RS-2, 110RS-2, 110-2RS)

FILE NAME =	USER NAME = eybar.js	DESIGNED -	REVISED -	STATE OF ILLINOIS DEPARTMENT OF TRANSPORTATION	PAVEMENT MARKING SCHEDULE	F.A. RTE. =	SECTION	COUNTY	TOTAL SHEETS	SHEET NO.
ct:\pwork\p\pidot\eybar.js\0256359\bl78185-shr-pln.dgn		DRAWN -	REVISED -			*	**	JEFFERSON	25	10
PLOT SCALE = 100.0164' / IN.		CHECKED -	REVISED -							
PLOT DATE = 3/23/2011		DATE -	REVISED -		SCALE: _____ SHEET NO. ____ OF ____ SHEETS STA. _____ TO STA. _____					ILLINOIS FED. AID PROJECT CONTRACT NO. 78185

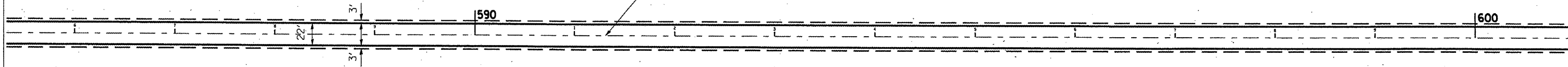


• FAS 2826
 •• (109RS-2, 110RS-2, 110-2RS)

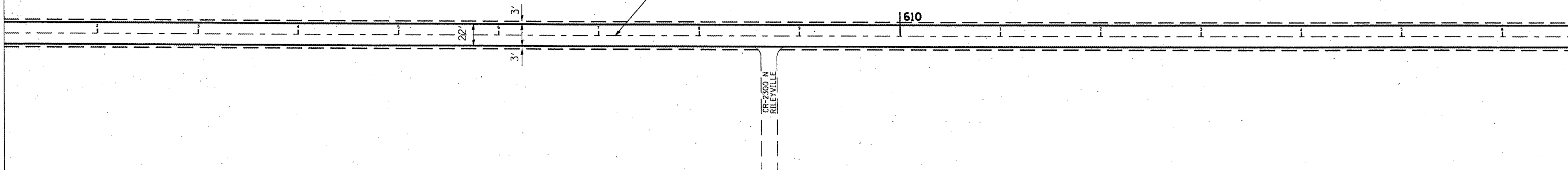
FILE NAME = c:\pwwork\pwwork\aybarja\d0256359\bl78185-shd-plan.dgn	USER NAME = aybarja	DESIGNED -	REVISED -	STATE OF ILLINOIS DEPARTMENT OF TRANSPORTATION	PLAN LAYOUT		F.A. RTE.:	SECTION	COUNTY	TOTAL SHEETS	SHEET NO.
	PLOT SCALE = 100.2434' / IN.	DRAWN -	REVISED -		JEFFERSON	25	11				
	PLOT DATE = 3/17/2011	CHECKED -	REVISED -		CONTRACT NO. 78185						
		DATE -	REVISED -		SCALE: _____	SHEET NO. ___ OF ___ SHEETS	STA. 559+00 TO STA. 585+30	ILLINOIS FED. AID PROJECT			



☉ FAS 2826 IL 37



☉ FAS 2826 IL 37



• FAS 2826
•• (109RS-2, 110RS-2, 110-2RS)

FILE NAME =	USER NAME = ayber.js	DESIGNED -	REVISED -
c:\pwork\pwork\ayber.js\d0256359\178185-shs-plan.dgn		DRAWN -	REVISED -
	PLOT SCALE = 100.2434' / IN.	CHECKED -	REVISED -
	PLOT DATE = 3/17/2011	DATE -	REVISED -

**STATE OF ILLINOIS
DEPARTMENT OF TRANSPORTATION**

PLAN LAYOUT

SCALE: -----	SHEET NO. -- OF -- SHEETS	STA. _585+30_ TO STA. _616+30_	F.A. RTE. --	SECTION --	COUNTY	TOTAL SHEETS	SHEET NO.
			•	••	JEFFERSON	25	12
					CONTRACT NO. 78185		
					ILLINOIS FED. AID PROJECT		



☉ FAS 2826 IL 37

620

630

22'
3'

E.O. Sta. 627+43.1 (BK) =
Sta. 625+82.1 (AH)

STA. 631+10.15

CR-2250 N

☉ FAS 2826 IL 37

640

STA. 640+40

22'
3'

22'
3'

EXISTING GUTTER
BEGINS RT.

EX. GUTTER ENDS RT.



• FAS 2826
•• (109RS-2, 110RS-2, 110-2RS)

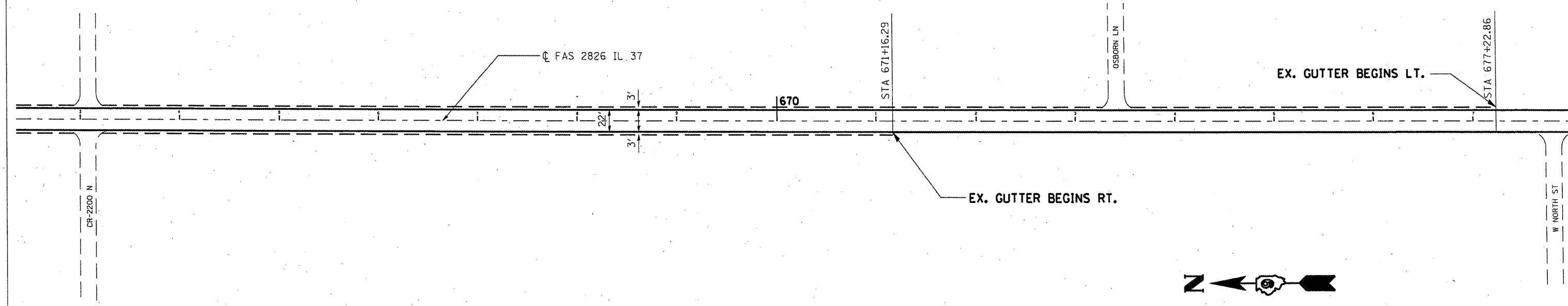
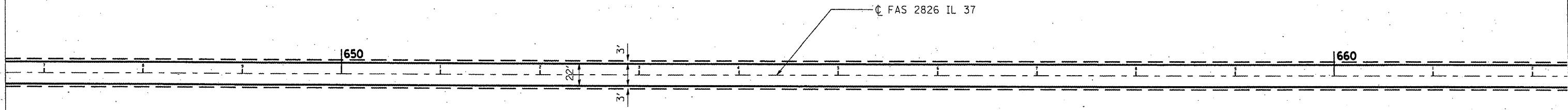
FILE NAME =	USER NAME = aybar.js	DESIGNED -	REVISED -
c:\pwwork\pwwork\aybar.js\d0256359\17885-shr-plan.dgn		DRAWN -	REVISED -
PLOT SCALE = 100.2434' / IN.		CHECKED -	REVISED -
PLOT DATE = 3/17/2011		DATE -	REVISED -

**STATE OF ILLINOIS
DEPARTMENT OF TRANSPORTATION**

PLAN LAYOUT

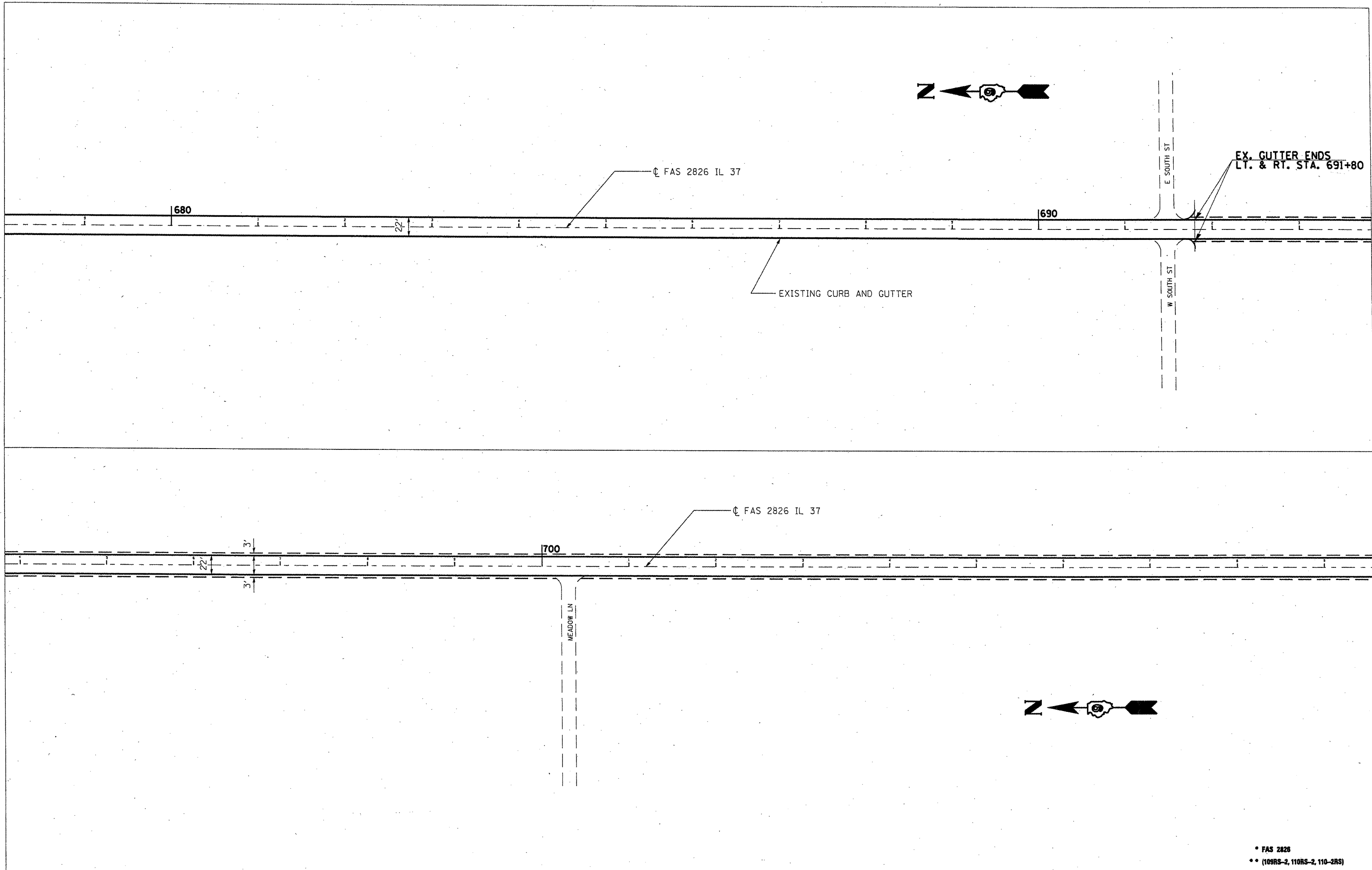
SCALE: _____ SHEET NO. ____ OF ____ SHEETS STA. 616+90 TO STA. 646+90

F.A. RTE.	SECTION	COUNTY	TOTAL SHEETS	SHEET NO.
*	**	JEFFERSON	25	13
CONTRACT NO. 78185			ILLINOIS FED. AID PROJECT	



• FAS 2826
 •• (100RS-2, 110RS-2, 110-2RS)

FILE NAME = c:\p\work\p\midot\aybar.js\d0256359\bl78185-sht-plan.dgn	USER NAME = aybar.js	DESIGNED - ---	REVISED - -----	STATE OF ILLINOIS DEPARTMENT OF TRANSPORTATION	PLAN LAYOUT			F.A. RTE.	SECTION	COUNTY	TOTAL SHEETS	SHEET NO.
PLOT SCALE = 100.2434' / IN.	CHECKED - ---	REVISED - -----	REVISED - -----		SCALE: -----	SHEET NO. -- OF -- SHEETS	STA. -- 646+90 -- TO STA. -- 678+00 --	•	••	JEFFERSON	25	14
PLOT DATE = 3/17/2011	DATE - -----	REVISED - -----	REVISED - -----							CONTRACT NO. 78185		
								ILLINOIS FED. AID PROJECT				



EX. GUTTER ENDS
LT. & RT. STA. 691+80

☐ FAS 2826 IL 37

EXISTING CURB AND GUTTER

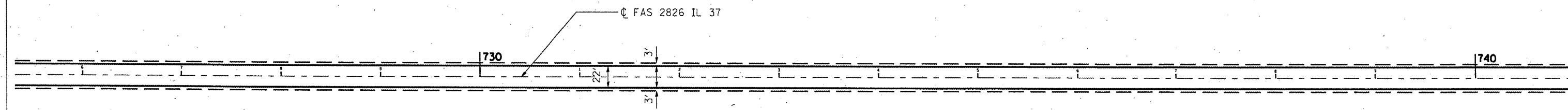
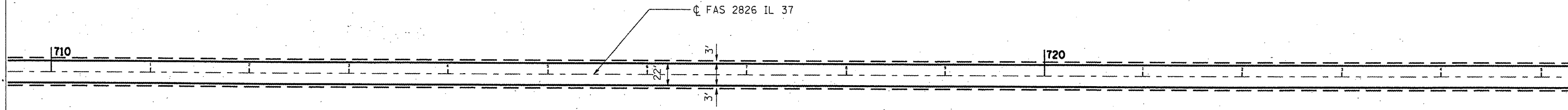
☐ FAS 2826 IL 37

700

MEADOW LN

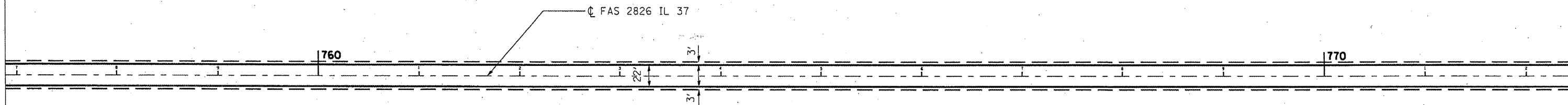
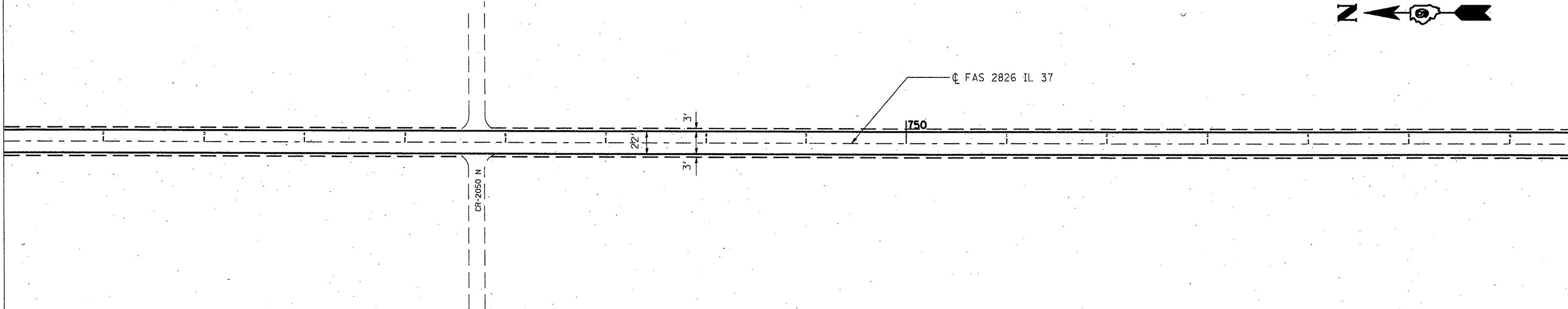
• FAS 2826
•• (109RS-2, 110RS-2, 110-2RS)

FILE NAME =	USER NAME = eybar.js	DESIGNED -	REVISED -	STATE OF ILLINOIS DEPARTMENT OF TRANSPORTATION	PLAN LAYOUT		F.A. RTE.	SECTION	COUNTY	TOTAL SHEETS	SHEET NO.	
c:\p\work\p\ridot\eybar.js\d0256359\6178	95-sh-t-plan.dgn	DRAWN -	REVISED -		SCALE: _____	SHEET NO. ____ OF ____ SHEETS	STA. 678+00 TO STA. 710+00	•	••	JEFFERSON	25	15
	PLOT SCALE = 100.2434' / IN.	CHECKED -	REVISED -									
	PLOT DATE = 3/17/2011	DATE -	REVISED -									
CONTRACT NO. 78185											ILLINOIS FED. AID PROJECT	



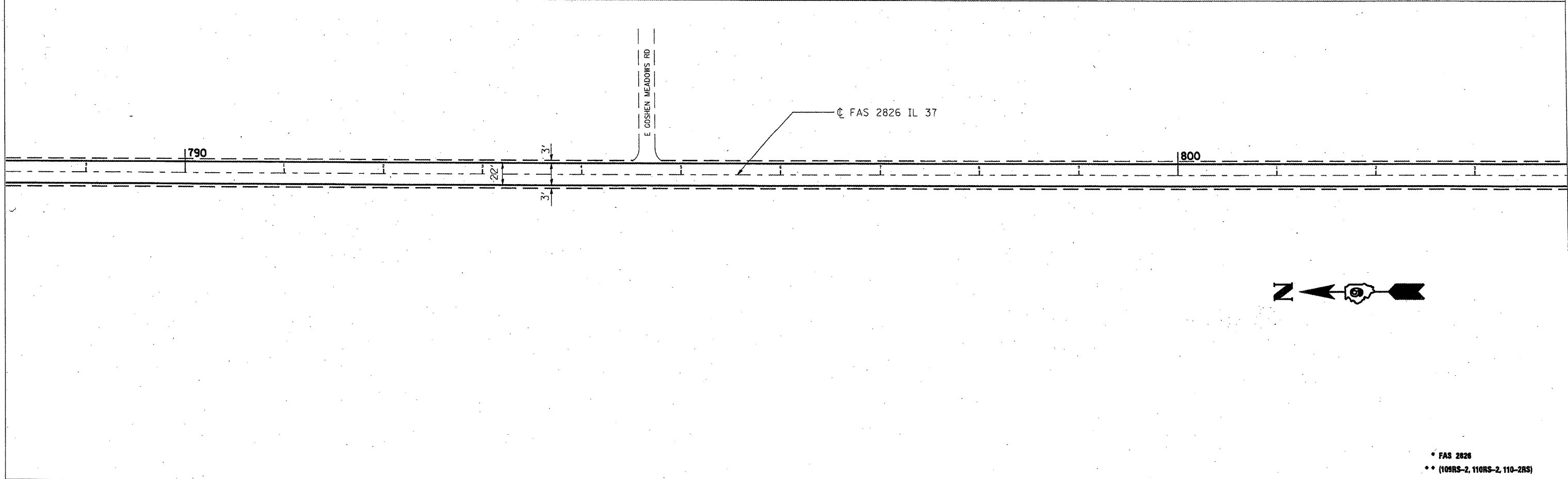
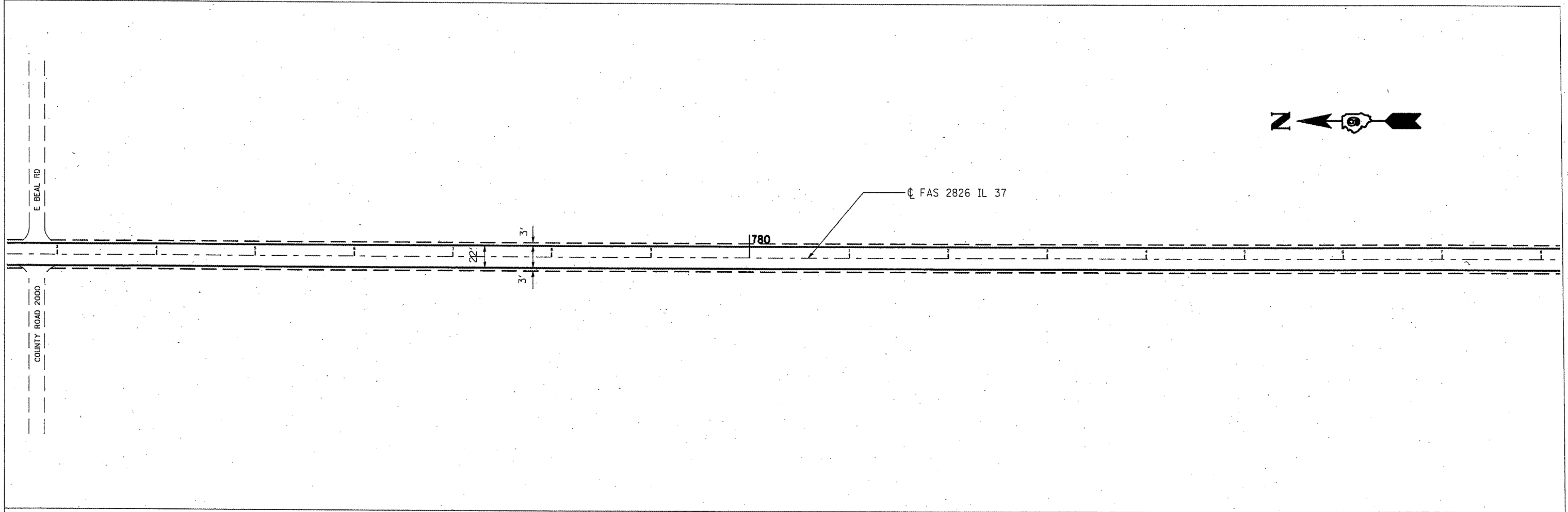
• FAS 2826
 •• (109RS-2, 110RS-2, 110-2RS)

FILE NAME = c:\pw_work\pwidot\aybarjs\d0256399\bl78185-sh1-plan.dgn	USER NAME = aybar-js	DESIGNED -	REVISED -	STATE OF ILLINOIS DEPARTMENT OF TRANSPORTATION	PLAN LAYOUT		F.A. RTE: *	SECTION **	COUNTY JEFFERSON	TOTAL SHEETS 25	SHEET NO. 16	
PLOT SCALE = 100.2434' / IN.	CHECKED -	REVISED -	REVISED -		SCALE: _____	SHEET NO. ____ OF ____ SHEETS	STA. 710+00 TO STA. 741+00	CONTRACT NO. 78185				
PLOT DATE = 3/17/2011	DATE -	REVISED -	REVISED -		ILLINOIS FED. AID PROJECT							



• FAS 2826
 •• (109RS-2, 110RS-2, 110-2RS)

FILE NAME = c:\pwork\pwork\ayberjs\d0256359\bl78185-shr-plan.dgn	USER NAME = ayberjs	DESIGNED -	REVISED -	STATE OF ILLINOIS DEPARTMENT OF TRANSPORTATION	PLAN LAYOUT		F.A. RTE.:	SECTION	COUNTY	TOTAL SHEETS	SHEET NO.
PLOT SCALE = 100.2920' / IN.	CHECKED -	REVISED -	REVISED -				•	••	JEFFERSON	25	17
PLOT DATE = 3/17/2011	DATE -	REVISED -	REVISED -		SCALE: _____ SHEET NO. ____ OF ____ SHEETS STA. 741+00 TO STA. 772+50		ILLINOIS FED. AID PROJECT				
CONTRACT NO. 78185											



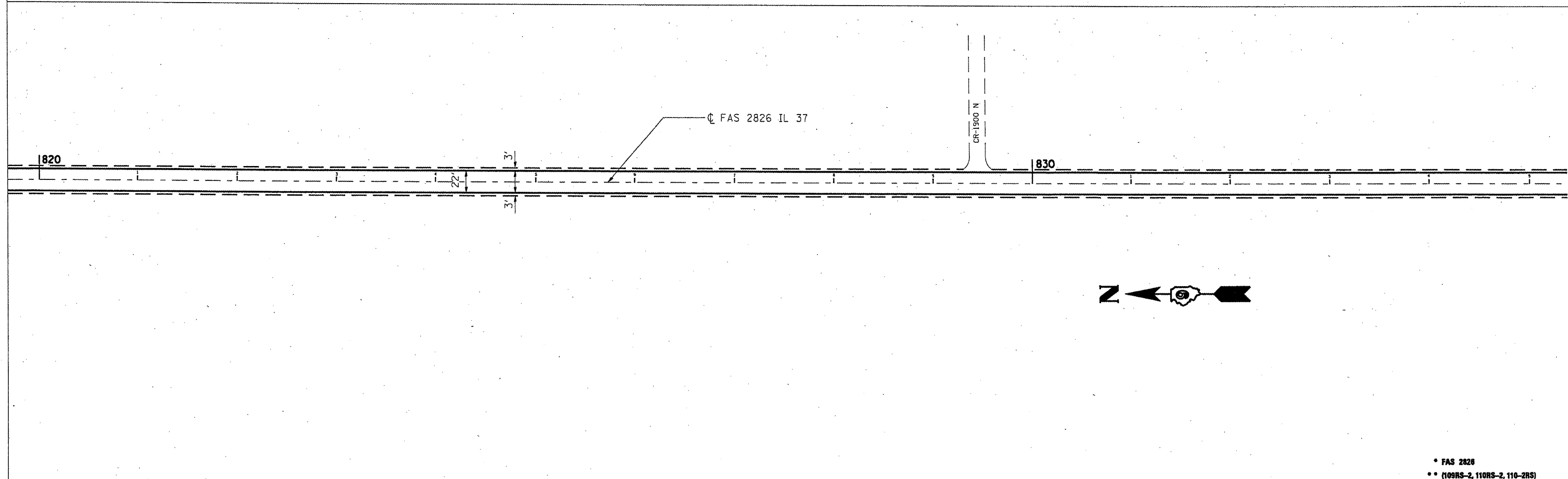
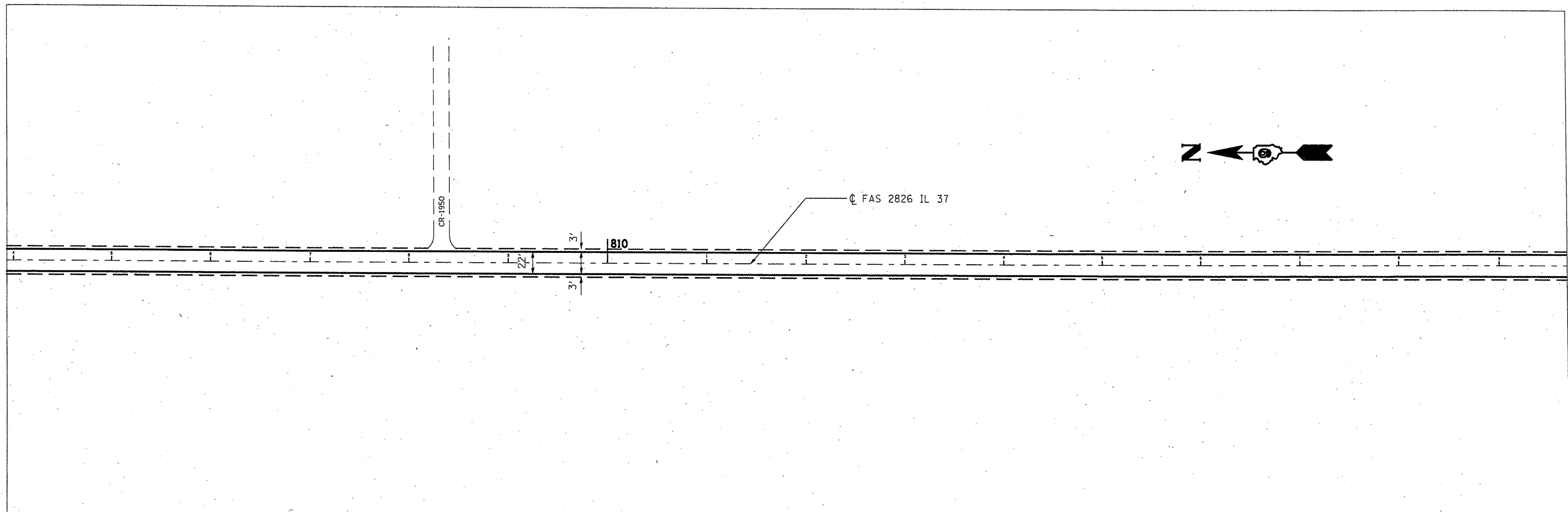
• FAS 2826
 •• (109RS-2, 110RS-2, 110-2RS)

FILE NAME = c:\pwork\pwork\dot\aybar\j\0256359\l178	USER NAME = aybar.j	DESIGNED - ---	REVISED - ---
85-sht-plan.dgn		DRAWN - ---	REVISED - ---
PLOT SCALE = 100.2920' / IN.		CHECKED - ---	REVISED - ---
PLOT DATE = 3/17/2011		DATE - ---	REVISED - ---

**STATE OF ILLINOIS
 DEPARTMENT OF TRANSPORTATION**

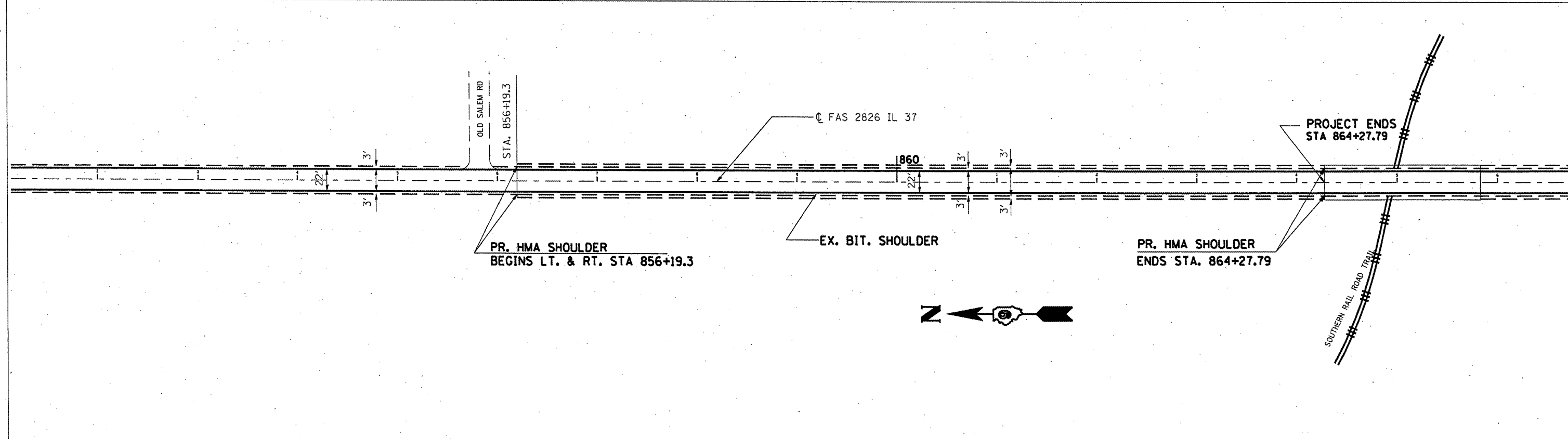
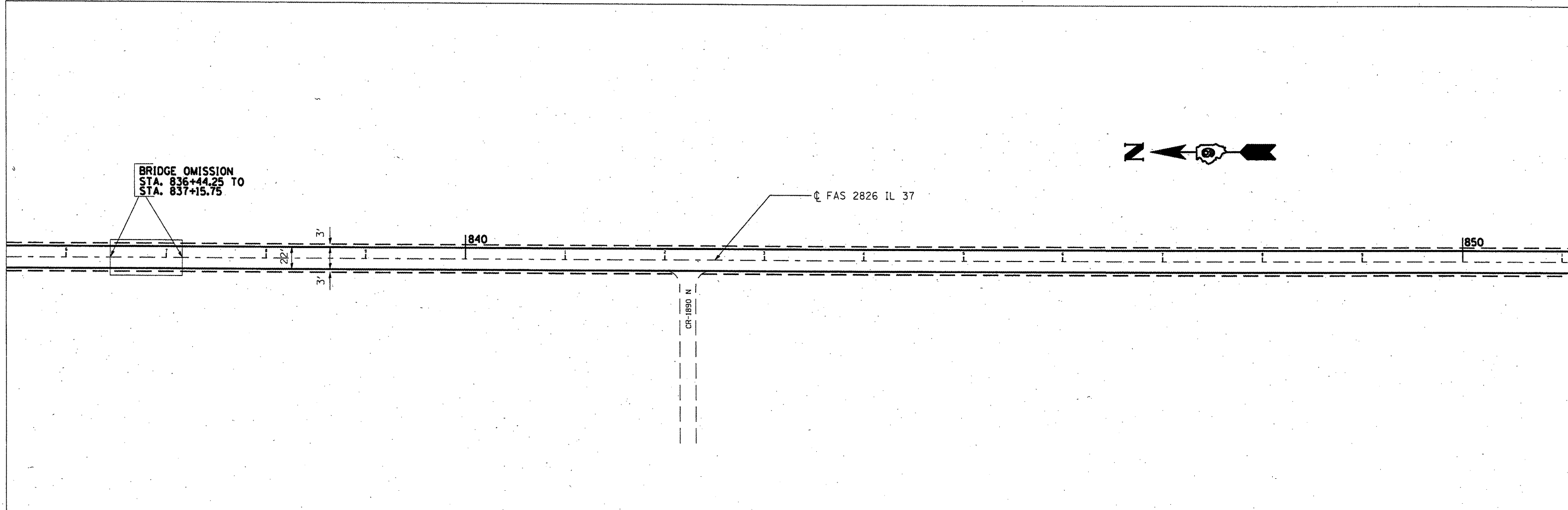
PLAN LAYOUT	
SCALE: -----	SHEET NO. ___ OF ___ SHEETS
STA. 772+50	TO STA. 804+00

F.A. RTE.	SECTION	COUNTY	TOTAL SHEETS	SHEET NO.
•	••	JEFFERSON	25	18
CONTRACT NO. 70185			ILLINOIS FED. AID PROJECT	



• FAS 2826
 •• (109RS-2, 110RS-2, 110-2RS)

FILE NAME = c:\p\work\p\dot\eyber.js\d8256359\178185-sht-plan.dgn	USER NAME = eyber.js	DESIGNED -	REVISED -	STATE OF ILLINOIS DEPARTMENT OF TRANSPORTATION	PLAN LAYOUT		F.A. RTE.	SECTION	COUNTY	TOTAL SHEETS	SHEET NO.	
	PLOT SCALE = 100.2928' / IN.	CHECKED -	REVISED -		SCALE: _____	SHEET NO. _____ OF _____ SHEETS	STA. 804+00 TO STA. 835+50	•	••	JEFFERSON	25	19
	PLOT DATE = 3/17/2011	DATE -	REVISED -					CONTRACT NO. 78185				
								ILLINOIS FED. AID PROJECT				



• FAS 2826
 •• (109RS-2, 110RS-2, 110-2RS)

FILE NAME =	USER NAME = eybarjs	DESIGNED -	REVISED -
cr:\work\p\idat\eybarjs\d0256359\178	85-sh1-pln.dgn	DRAWN -	REVISED -
	PLOT SCALE = 100.3351' / IN.	CHECKED -	REVISED -
	PLOT DATE = 3/18/2011	DATE -	REVISED -

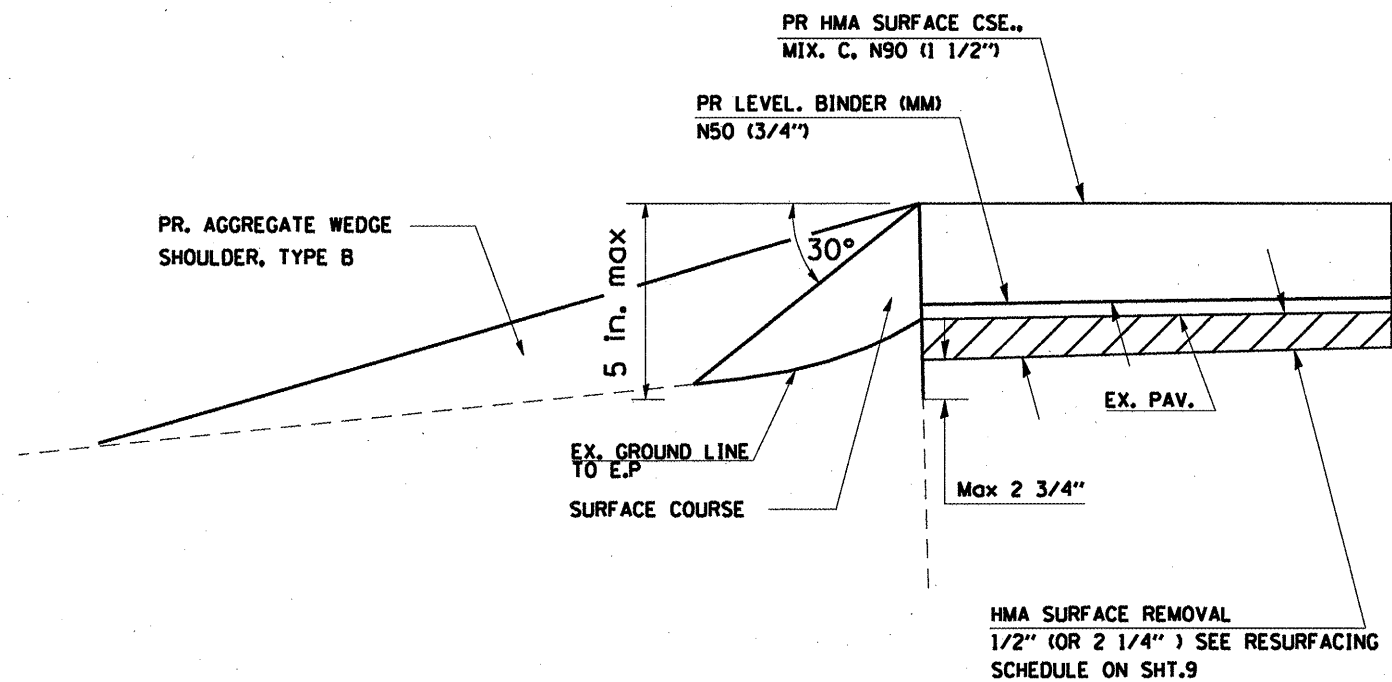
**STATE OF ILLINOIS
 DEPARTMENT OF TRANSPORTATION**

PLAN LAYOUT

SCALE: _____ SHEET NO. ___ OF ___ SHEETS STA. 835+50 TO STA. 866+00

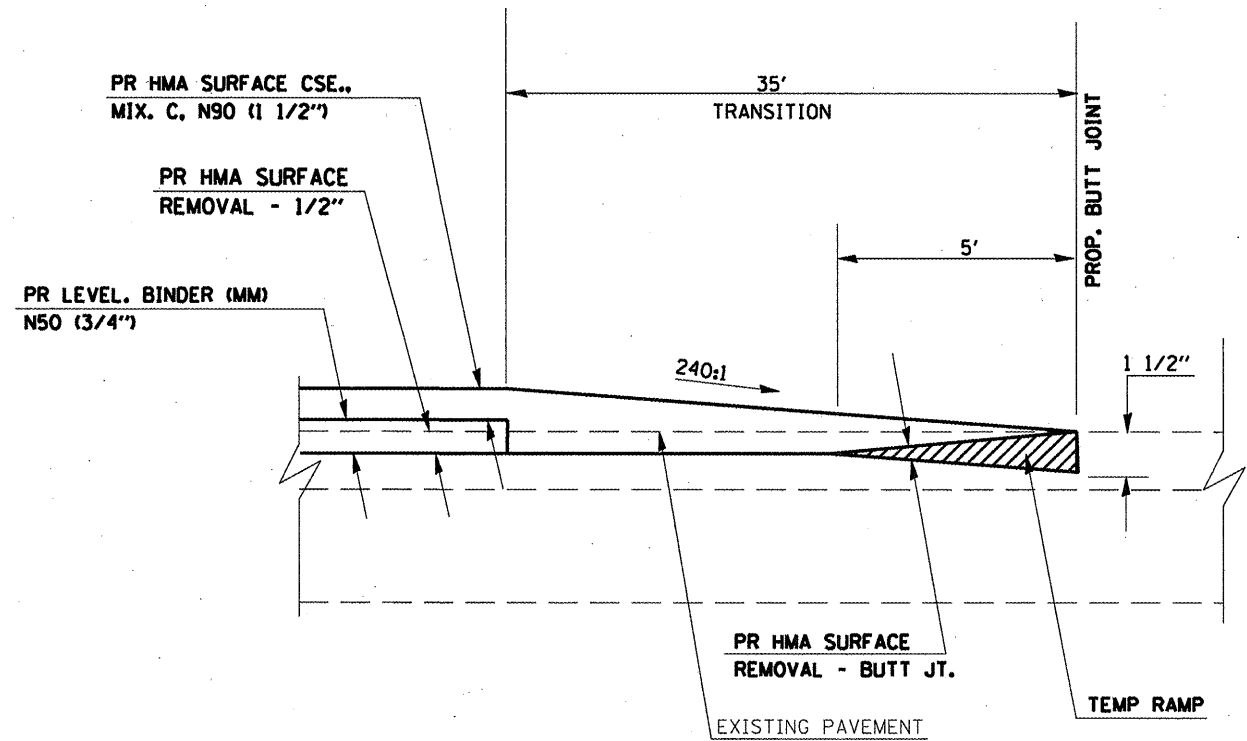
F.A. RTE.	SECTION	COUNTY	TOTAL SHEETS	SHEET NO.
*	**	JEFFERSON	25	20
CONTRACT NO. 76185			ILLINOIS FED. AID PROJECT	

SAFETY EDGE DETAIL



TO BE USED:
 THROUGHOUT PROJECT EXCEPT WHERE
 GUTTER OR HMA SHOULDER IS PRESENT

DETAIL FOR HMA SURFACE REMOVAL - BUTT JOINT



TO BE USED:
 STA. 559+00 TO STA. 559+35
 STA. 836+44.25 TO STA. 836+09.25
 STA. 837+15.75 TO STA. 837+50.75
 STA. 864+27.79 TO STA. 863+92.79

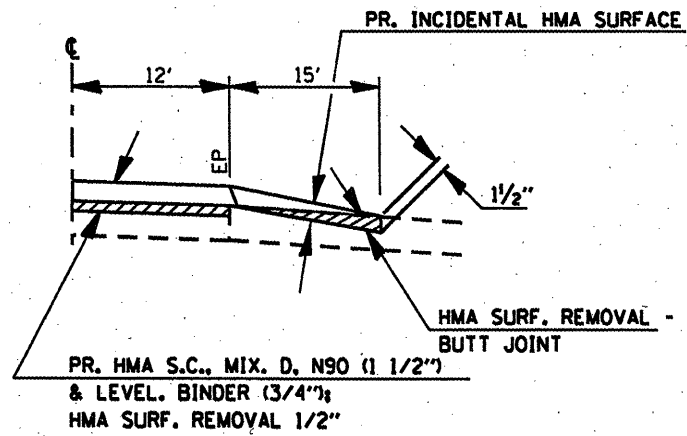
• FAS 2826
 •• (109RS-2, 110RS-2, 110-2RS)

FILE NAME =	USER NAME = eybar.js	DESIGNED -	REVISED -
os:\pw\work\p\dot\eybar.js\d0256359\178185-sht-plen.dgn		DRAWN -	REVISED -
PLOT SCALE = 100.3951' / IN.		CHECKED -	REVISED -
PLOT DATE = 3/21/2011		DATE -	REVISED -

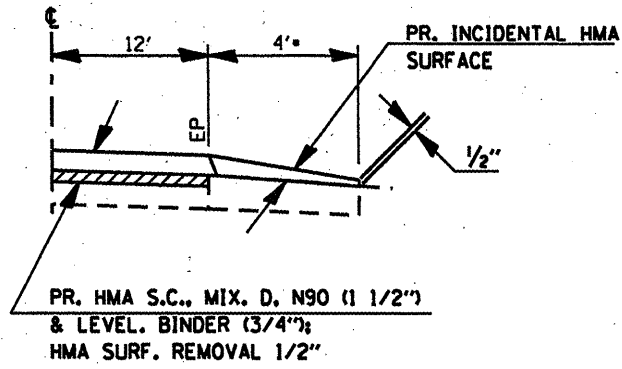
**STATE OF ILLINOIS
 DEPARTMENT OF TRANSPORTATION**

DETAIL BUTT JOINT AND SAFETY EDGE				F.A. RTE.	SECTION	COUNTY	TOTAL SHEETS	SHEET NO.
				•	••	JEFFERSON	25	21
SCALE: _____ SHEET NO. ___ OF ___ SHEETS STA. _____ TO STA. _____				CONTRACT NO. 78185				
ILLINOIS FED. AID PROJECT								

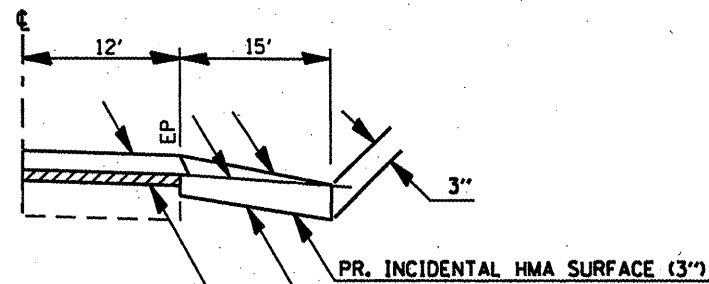
SIDEROAD AND ENTRANCE DETAILS



SIDE ROAD SEC. B-B
EX. BIT. OR CONC. SURFACE



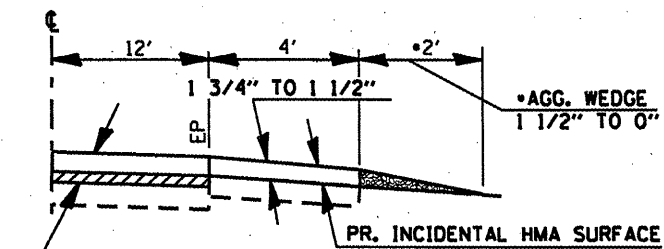
PE OR CE SEC. A-A
EX. BIT. OR CONC. SURFACE
•OR END OF BIT. APRON



PR. HMA S.C., MIX. D. N90 (1 1/2")
& LEVEL. BINDER (3/4")
HMA SURF. REMOVAL 1/2"

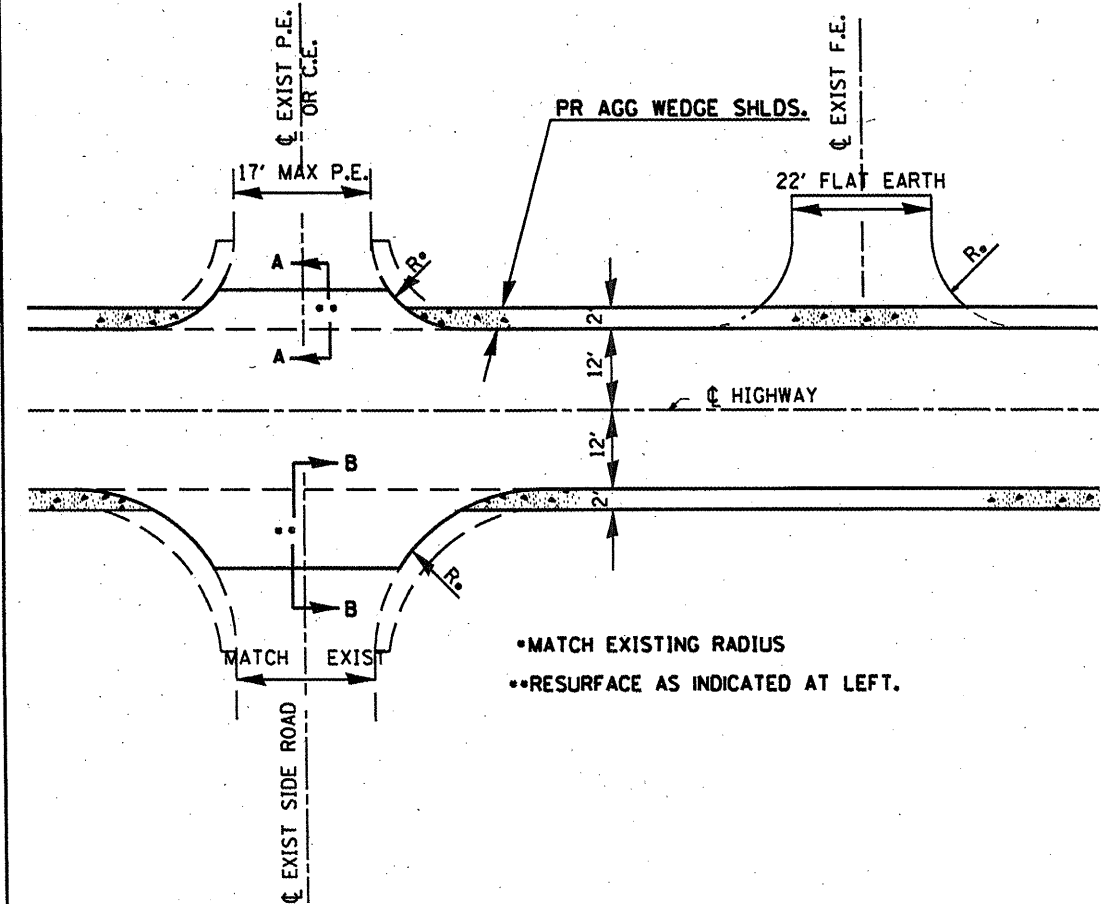
VAR. SHAPING AS DIRECTED
BY THE ENGINEER (SEE NOTE 2)

SIDE ROAD SEC. B-B
EX. AGGREGATE SURFACE
(SEE NOTE 1)



PR. HMA S.C., MIX. D. N90 (1 1/2")
& LEVEL. BINDER (3/4")
HMA SURF. REMOVAL 1/2"

PE, CE SEC. A-A
EX. AGGREGATE SURFACE
WITH BIT. APRON
•SEE ENTRANCE SCHEDULE
FOR QUANTITY.

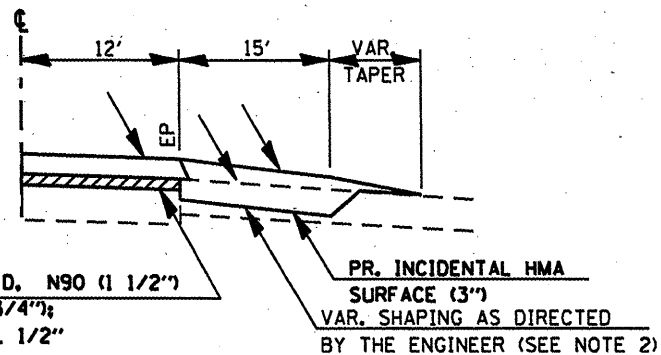


**ENTRANCE SCHEDULE
FOR LOCATION 1**

TYPE	NUMBER OF ENTRANCES
P.E.	58
C.E.	11

NOTES

- IF EXISTING SUBBASE IS INADEQUATE, AS DETERMINED BY THE ENGINEER, THE SIDE ROADS SHALL BE CORED OUT AND AGGREGATE SUBBASE, TYPE B SHALL BE PLACED FOR BASE. THE COST OF CORING OUT THE SIDE ROAD AND ANY AGGREGATE BASE COURSE SHALL BE PAID FOR AS SPECIFIED IN ART. 109.04 OF THE STANDARD SPECIFICATIONS FOR ROAD AND BRIDGE CONSTRUCTION. IF EXISTING SUBBASE IS DETERMINED TO BE ADEQUATE, THE PREPARATION OF THE BASE SHALL BE CONSTRUCTED ACCORDING TO ARTICLE 406.19.
- VARIABLE SHAPING IS INCLUDED IN THE COST OF INCIDENTAL HOT-MIX ASPHALT SURFACE.



PR. HMA S.C., MIX. D. N90 (1 1/2")
& LEVEL. BINDER (3/4")
HMA SURF. REMOVAL 1/2"

VAR. SHAPING AS DIRECTED
BY THE ENGINEER (SEE NOTE 2)

SIDE ROAD SEC. B-B
EX. OIL & CHIP SURFACE
(SEE NOTE 1)

STATE OF ILLINOIS
DEPARTMENT OF TRANSPORTATION

DETAIL - LOC. 1 SIDE ROADS
AND ENTRANCES

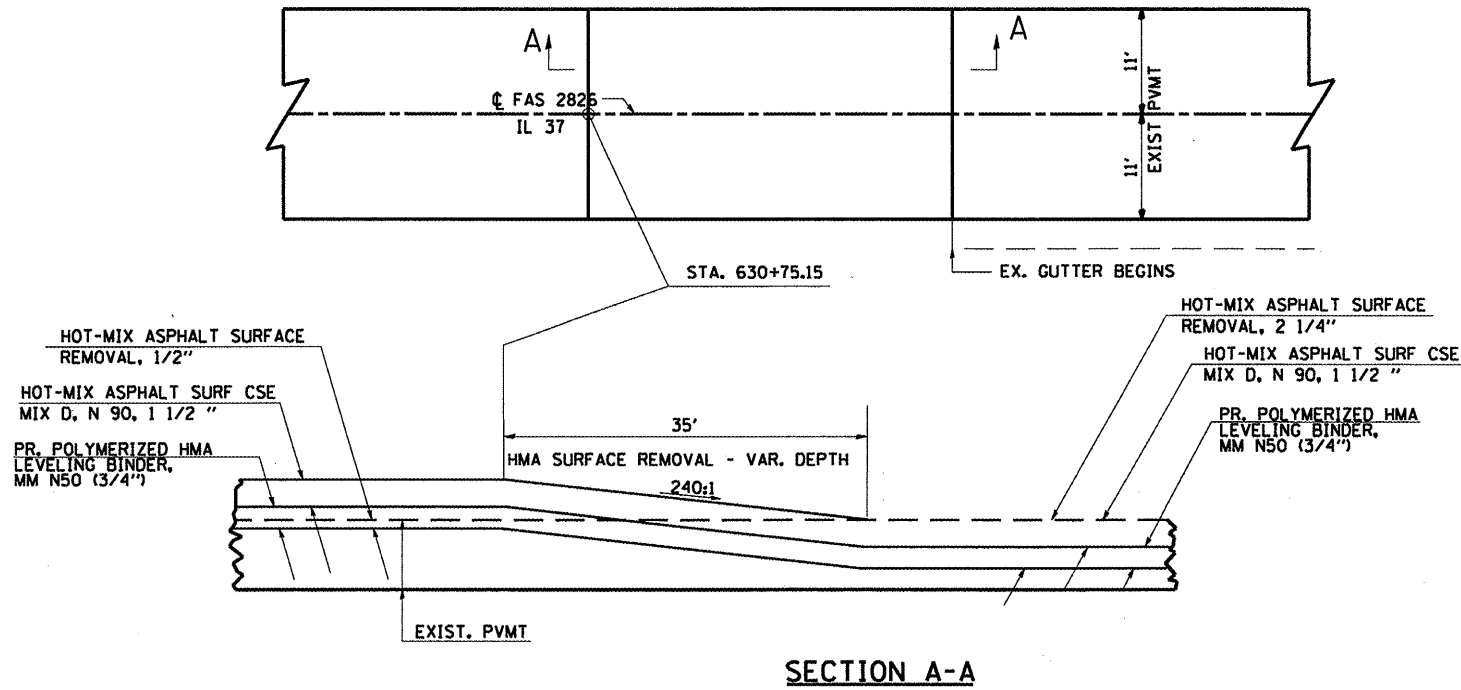
FILE NAME =	USER NAME = aybar.js	DESIGNED -	REVISED -
at\pwwork\pwwork\aybar.js\d0256359\15178	55-sh-t-plandgn	DRAWN -	REVISED -
	PLOT SCALE = 100.3351' / IN.	CHECKED -	REVISED -
	PLOT DATE = 3/18/2011	DATE -	REVISED -

SCALE: _____	SHEET NO. _____ OF _____ SHEETS	STA. _____ TO STA. _____	F.A.S. RTE. _____	SECTION _____	COUNTY _____	TOTAL SHEETS _____	SHEET NO. _____
			JEFFERSON		25	22	
					CONTRACT NO. 78185		
FED. ROAD DIST. NO. _____ ILLINOIS FED. AID PROJECT							

• FAS 2826
•• (109RS-2, 110RS-2, 110-2RS)

PAVEMENT TRANSITION DETAIL

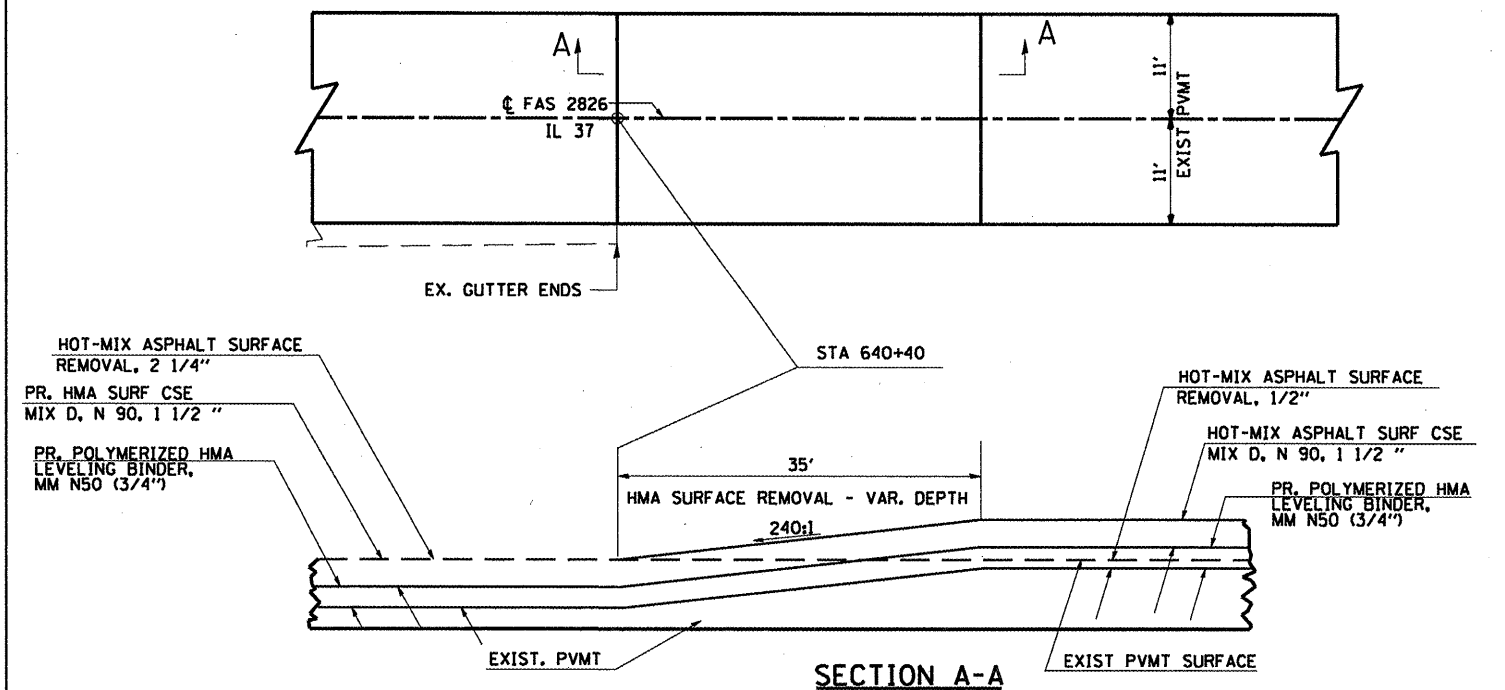
STA. 630+75.15 TO STA. 631+10.15



SECTION A-A

PAVEMENT TRANSITION DETAIL

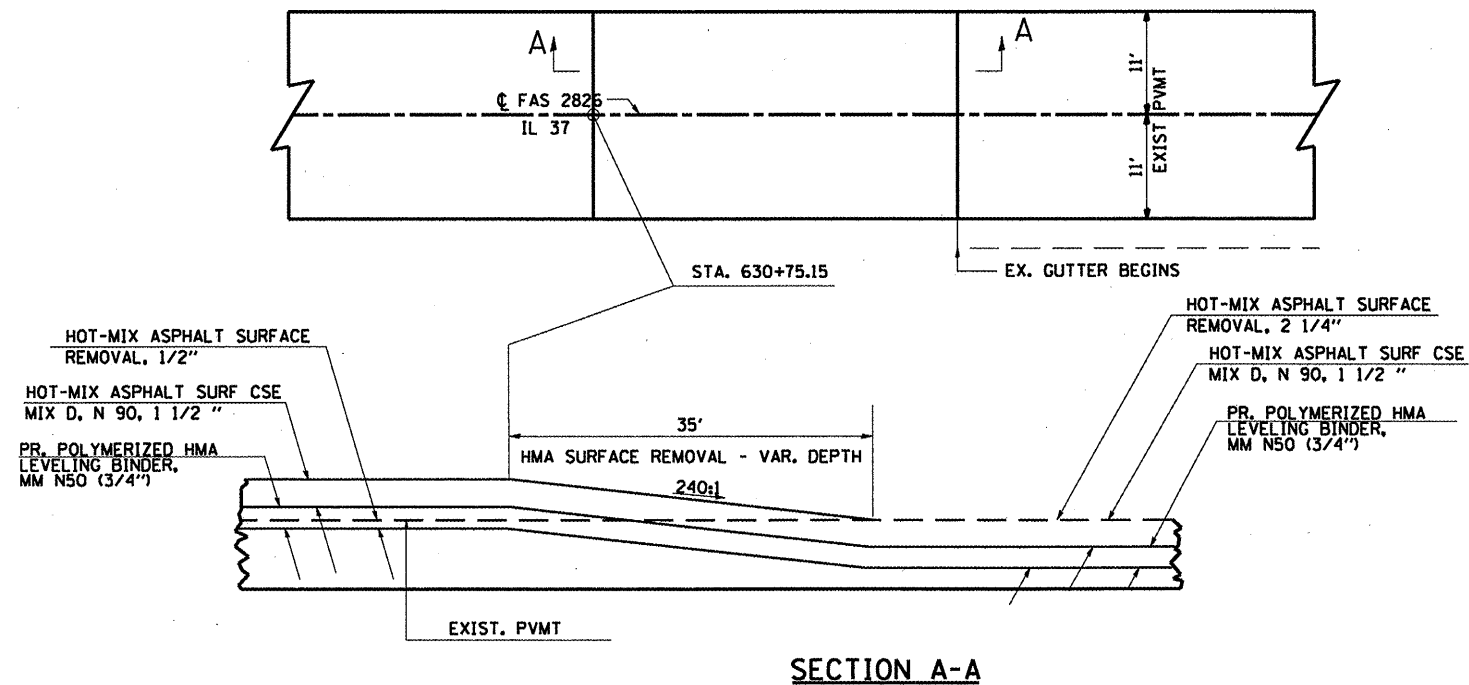
STA. 640+40 TO STA. 640+75



SECTION A-A

PAVEMENT TRANSITION DETAIL

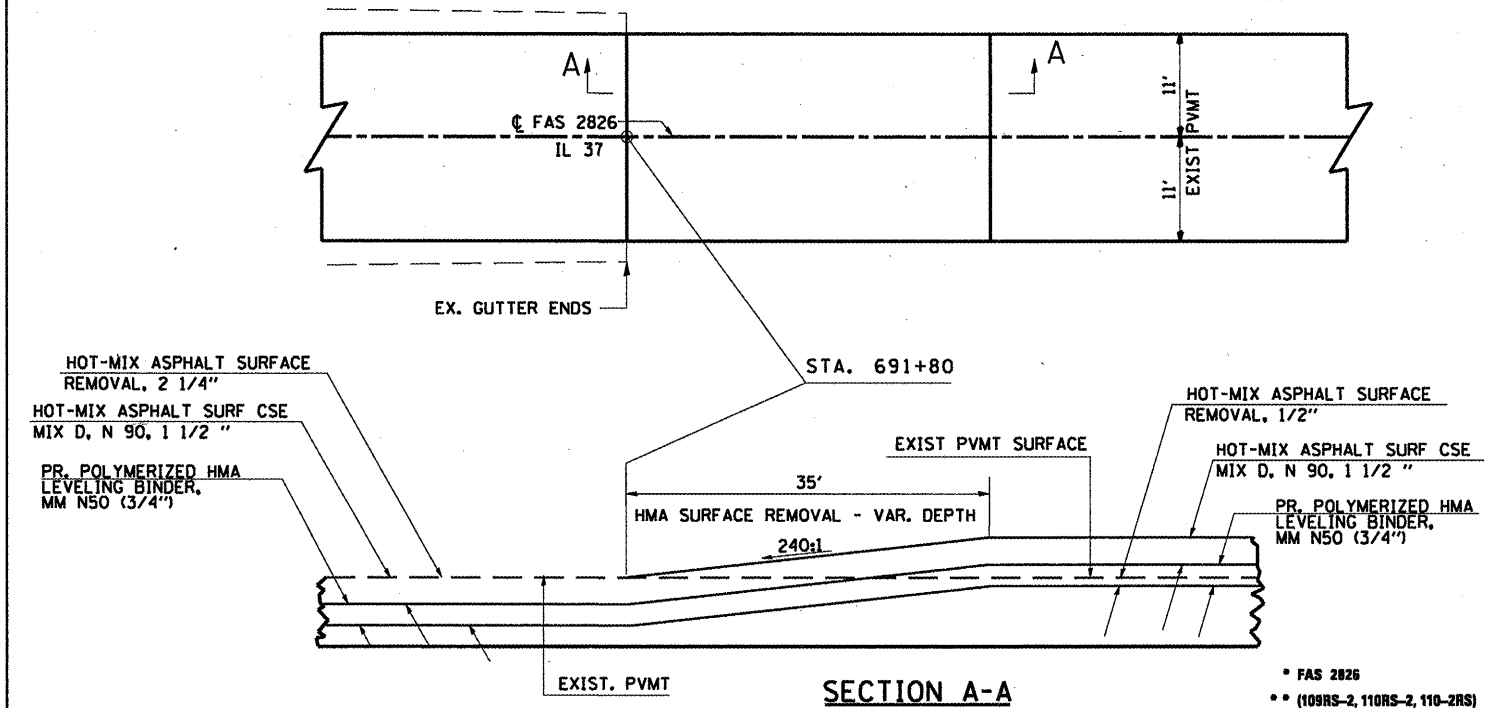
STA. 670+81.29 TO STA. 671+16.29



SECTION A-A

PAVEMENT TRANSITION DETAIL

STA. 691+80 TO STA. 692+15



SECTION A-A

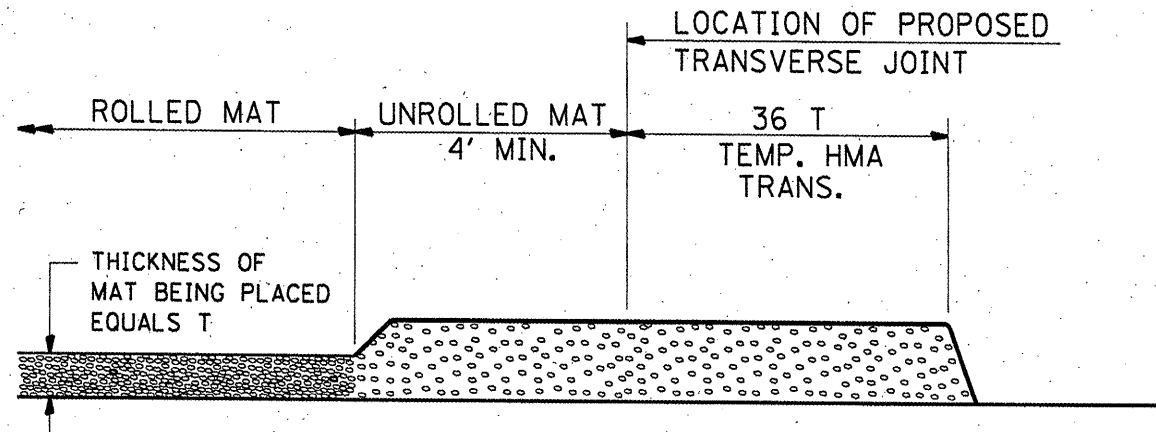
* FAS 2826
** (109RS-2, 110RS-2, 110-2RS)

FILE NAME =	USER NAME = aybar.js	DESIGNED -	REVISED -
ca:\pw_work\pwidot\aybar.js\0256359\178485-shr-plan.dgn		DRAWN -	REVISED -
PLOT SCALE = 100.3351' / IN.		CHECKED -	REVISED -
PLOT DATE = 3/21/2011		DATE -	REVISED -

STATE OF ILLINOIS
DEPARTMENT OF TRANSPORTATION

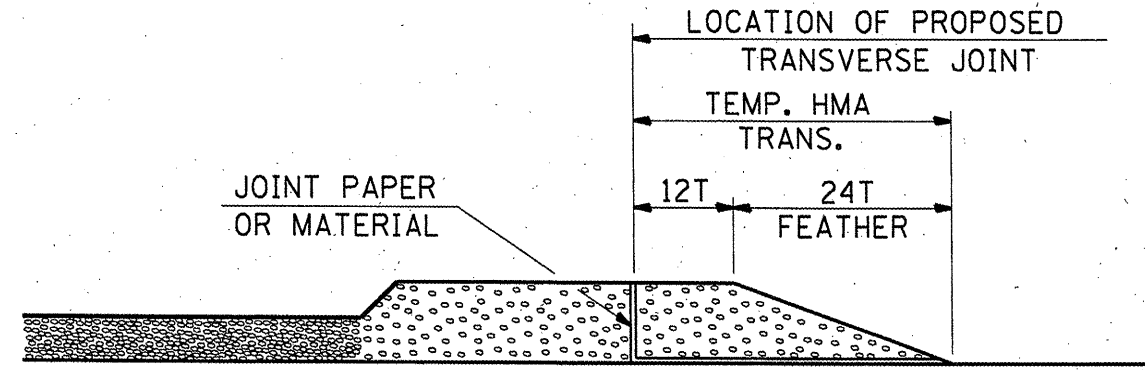
PAVEMENT TRANSITION DETAIL		F.A. R.T.E.	SECTION	COUNTY	TOTAL SHEETS	SHEET NO.
		*	**	JEFFERSON	25	23
				CONTRACT NO. 78185		
SCALE: _____		SHEET NO. ___ OF ___ SHEETS		STA. _____ TO STA. _____		
ILLINOIS FED. AID PROJECT						

TEMPORARY HOT-MIX ASPHALT TRANSITIONS



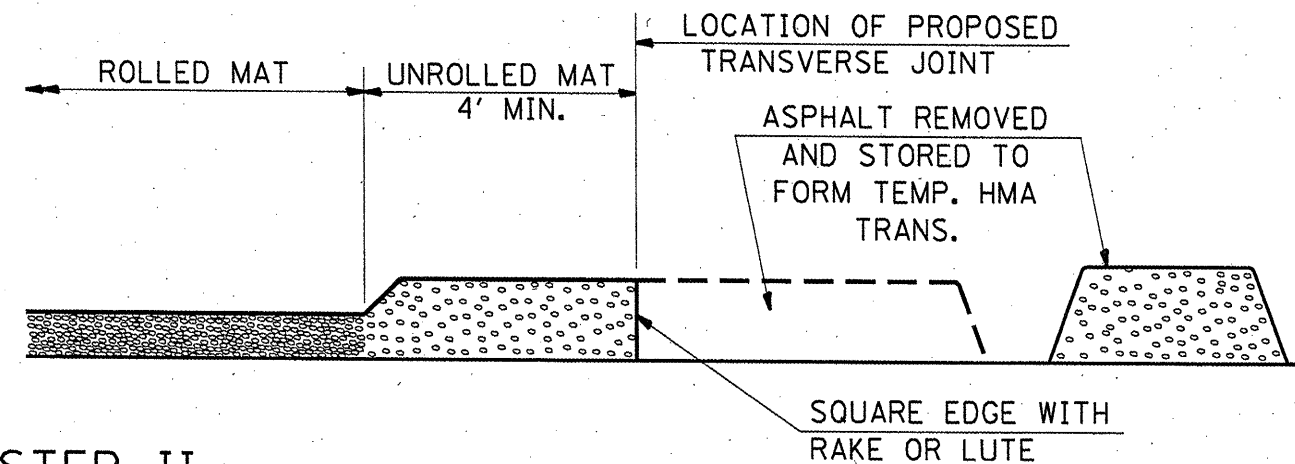
STEP I

1. PLACE HOT-MIX ASPHALT MAT, LENGTH 36 TIMES THE THICKNESS OF THE MAT BEING PLACED PAST THE PROPOSED TRANSVERSE JOINT LOCATION, USING NORMAL OPERATING PROCEDURES. EXTREME CARE SHOULD BE TAKEN TO MAINTAIN ENOUGH MATERIAL IN FRONT OF THE SCREED TO MAINTAIN REQUIRED PAVING DEPTH.



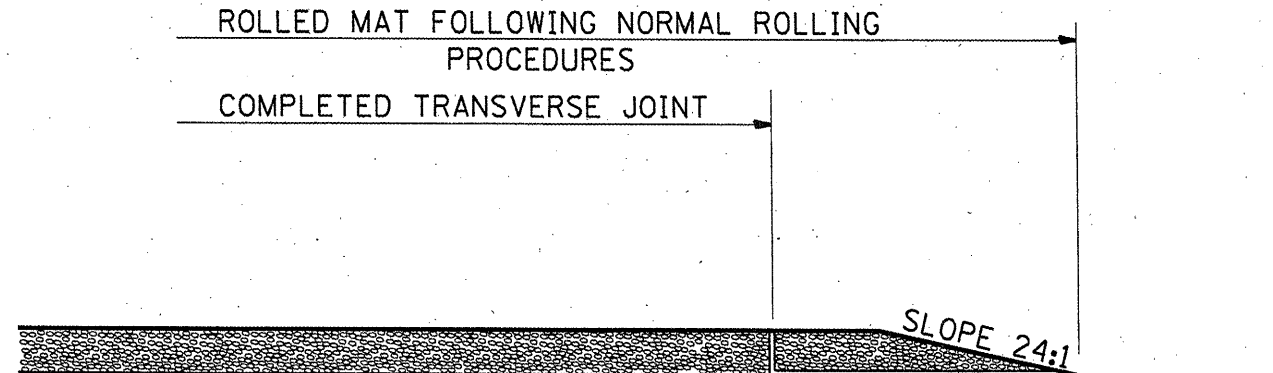
STEP III

1. JOINT PAPER OR OTHER PRESELECTED JOINT MATERIAL IS THEN PLACED IN THE CLEARED AREA AND THE EXCESS ASPHALT USED TO HAND FORM A TRANSITION TO THE DIMENSIONS SHOWN ABOVE.
2. NOTE THAT IN CONSTRUCTING THE TRANSITION, THE MAT DEPTH IS CONTINUED AS PART OF THE TRANSITION BEFORE FORMING THE FEATHER.



STEP II

1. MOVE THE PAVER OUT OF THE WAY AND REMOVE THE ASPHALT FROM THE AREA OF THE PROPOSED TEMPORARY HOT-MIX ASPHALT TRANSITION.
2. SQUARE UP THE END OF THE MAT WITH A RAKE OR LUTE.
3. NOTE THAT THE MAT WITHIN 4' OF THE END OF JOINT IS NOT TO BE ROLLED AT THIS TIME.



STEP IV

1. COMPLETE TEMPORARY TRANSITION BY ROLLING.
2. TO RESUME PAVING, AT THE JOINT, REMOVE TEMPORARY TRANSITION AND DISPOSE OF THE MATERIAL ACCORDING TO ART. 202.03 OF THE STD. SPECS. (COST INCLUDED IN THE CONTRACT).
3. CONSTRUCTING THE TEMPORARY TRANSITIONS WILL NOT BE PAID FOR SEPARATELY IN ACCORDANCE WITH ARTICLE 406.14 OF THE STANDARD SPECIFICATIONS.

STD. 9-26

REVISIONS	
REDRAWN	2-15-89
REVISED	8-16-94
REVISED	01-09-07
RESIZED	05-8-08

FAS 2828
 (109RS-2, 110RS-2, 110-2RS)

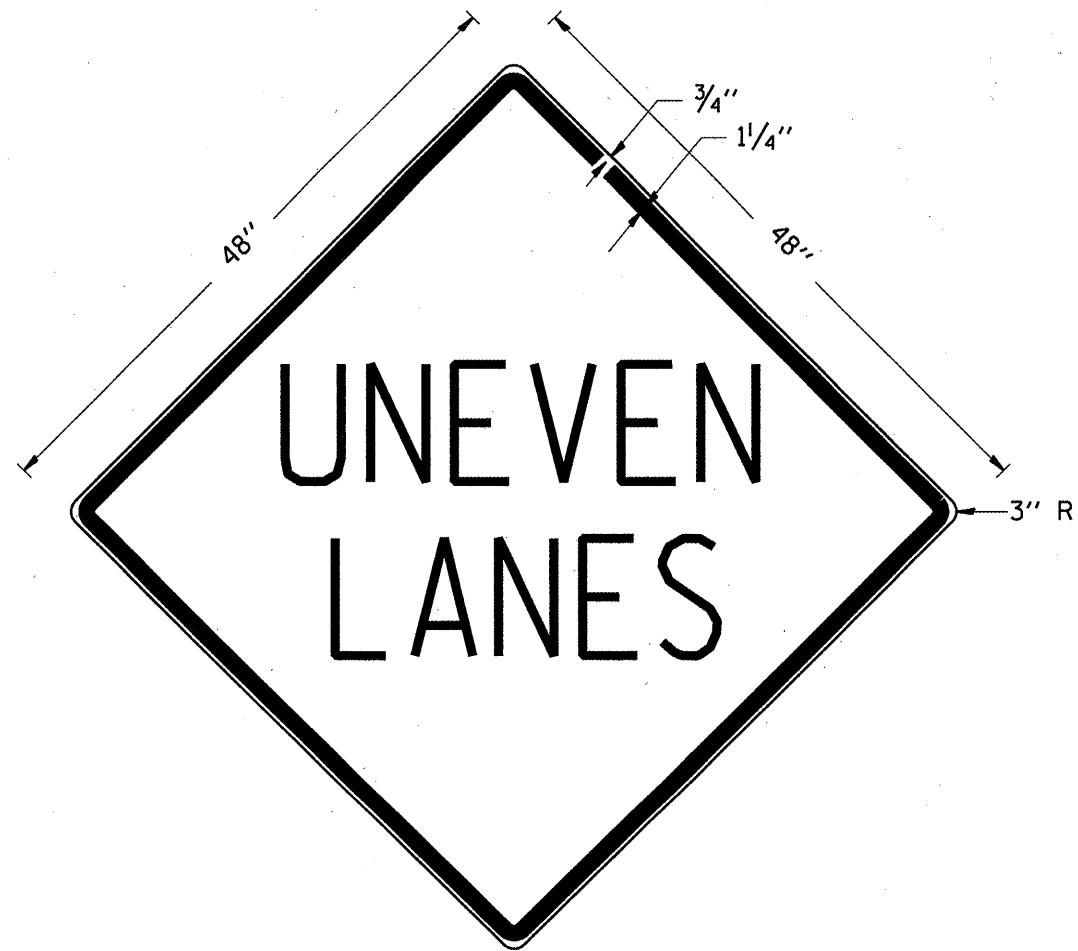
FILE NAME =	USER NAME = aybarjs	DESIGNED -	REVISED -
c:\pwork\pwidot\aybarjs\d0256359\178055-ahs-plan.dgn		DRAWN -	REVISED -
PLOT SCALE = 100.3351' / IN.		CHECKED -	REVISED -
PLOT DATE = 3/18/2011		DATE -	REVISED -

**STATE OF ILLINOIS
 DEPARTMENT OF TRANSPORTATION**

F.A. RTE.	SECTION	COUNTY	TOTAL SHEETS	SHEET NO.
.	..	JEFFERSON	25	24
CONTRACT NO. 78185			ILLINOIS FED. AID PROJECT	

UNEVEN LANES SIGN

W8-11 (48" x 48")



COLORS:

LEGEND AND BORDER - BLACK NON-REFLECTORIZED
 BACKGROUND - ORANGE REFLECTORIZED

NOTE: PRIOR TO ALLOWING TRAFFIC ON ANY PORTION OF THE ROADWAY THAT HAS BEEN COLDMILLED OR BEFORE RESURFACING OPERATIONS BEGIN, THE CONTRACTOR SHALL HAVE ERECTED "UNEVEN PAVEMENT" SIGNS THAT CONFORM TO THE ABOVE DETAILS. A MINIMUM OF ONE SIGN AT EACH END OF THE IMPROVEMENT WILL BE REQUIRED. THE CONTRACTOR SHALL MAINTAIN THE "UNEVEN PAVEMENT" SIGNS UNTIL THE RESURFACING OPERATIONS ARE COMPLETED.

IF AT ANY TIME THE SIGNS ARE IN PLACE BUT NOT APPLICABLE, THEY SHALL BE TURNED FROM THE VIEW OF MOTORISTS OR COVERED AS DIRECTED BY THE ENGINEER.

THE COST OF FURNISHING, ERECTING, MAINTAINING, AND REMOVING THE REQUIRED SIGNS SHALL BE INCLUDED IN THE CONTRACT.

REVISIONS

DRAWN	2-15-89
REVISED	4-06-93
REDESIGNED	
RESIZED	

STD. 9-41

• FAS 2826
 •• (109RS-2, 110RS-2, 110-2RS)

FILE NAME =	USER NAME = ayber.js	DESIGNED -	REVISED -
c:\pw\work\p1dot\ayber.js\d256359\bl78185-shr-plan.dgn		DRAWN -	REVISED -
PLOT SCALE = 100.1892' / IN.	CHECKED -	REVISED -	REVISED -
PLOT DATE = 3/23/2011	DATE -	REVISED -	REVISED -

STATE OF ILLINOIS
 DEPARTMENT OF TRANSPORTATION

UNEVEN LANES SIGN			
SCALE: _____	SHEET NO. ____ OF ____ SHEETS	STA. _____ TO STA. _____	

F.A. RTE.:	SECTION	COUNTY	TOTAL SHEETS	SHEET NO.
•	••	JEFFERSON	25	25
CONTRACT NO. 78185			ILLINOIS FED. AID PROJECT	