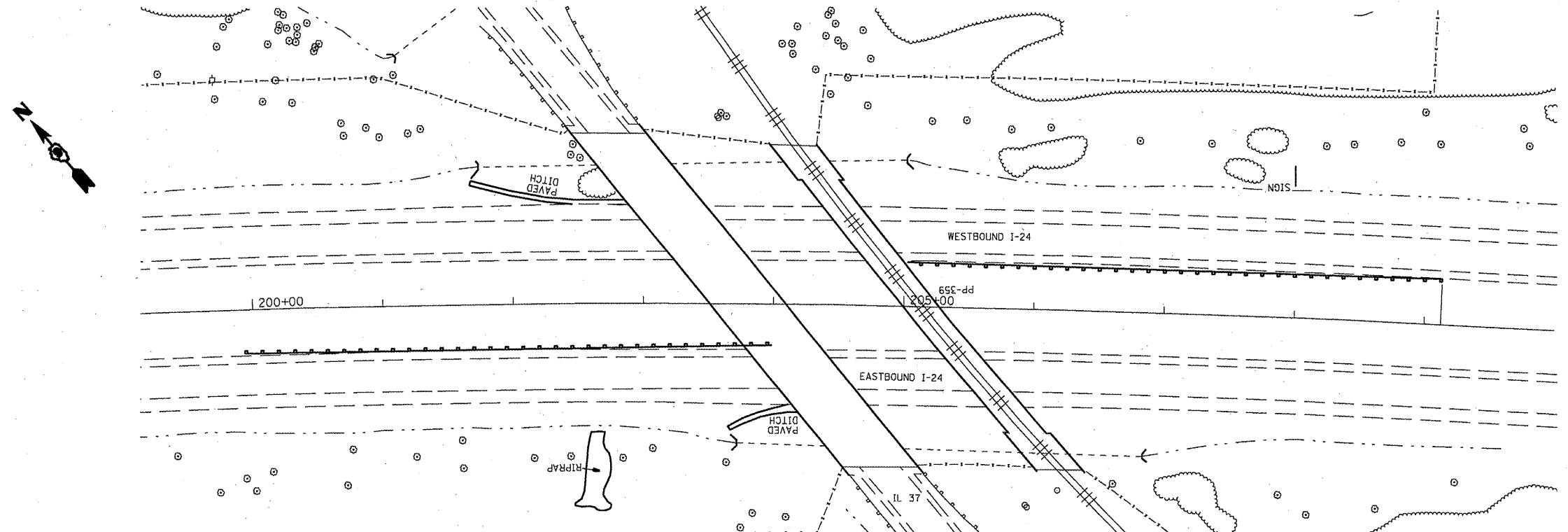
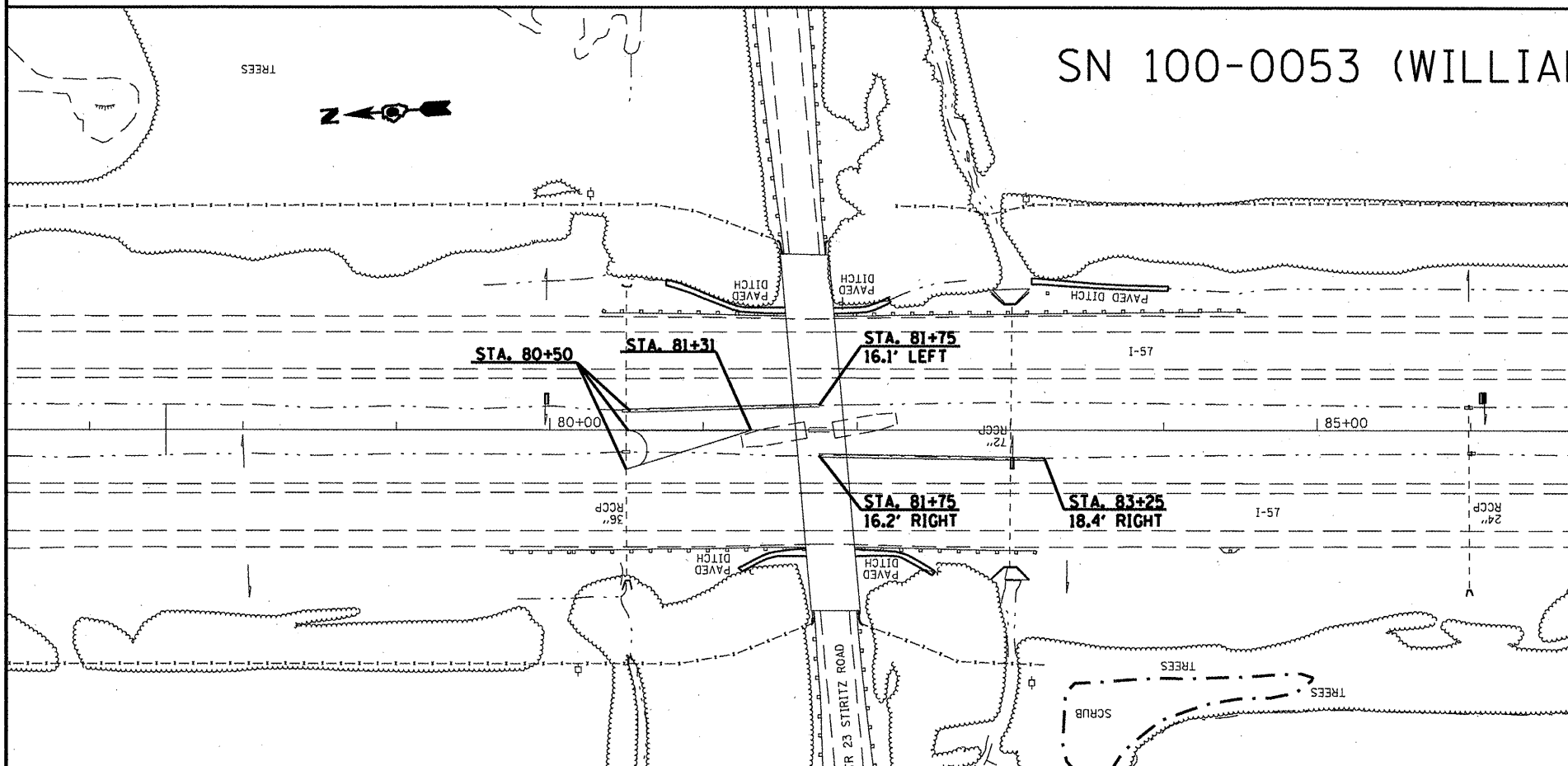


# SN 044-0031 AND SN 044-0032 (JOHNSON COUNTY)



THE GUARDRAIL SHOWN IS A TBT TYP 1, A TBT TYPE 2, OR STEEL PLATE BEAM GUARDRAIL. SEE THE GUARDRAIL SCHEDULE FOR TYPES AND STATIONS.

# SN 100-0053 (WILLIAMSON COUNTY)



STATION	EXISTING FLOWLINE		PROPOSED FLOWLINE	
	LEFT DITCH	RIGHT DITCH	LEFT DITCH	RIGHT DITCH
80+00	409.57	409.98		
80+25	409.05	409.39		
80+50	408.81	408.91	408.81	408.91
80+75	409.17	409.30	409.17	NA
81+00	409.69	409.66	409.78	NA
81+25	410.19	409.91	410	NA
81+50	410.69	410.16	410.69	NA
81+75	410.75	410.20	411.81	411.81
82+00	410.85	410.51	NA	410.51
82+25	410.81	410.43	NA	410.43
82+50	410.80	410.35	NA	410.35
82+75	410.80	410.26	NA	410.26
83+00	410.79	410.19	NA	410.19
83+25	410.71	410.14	410.71	410.14
83+50	410.60	410.10		
83+75	410.51	410.06		