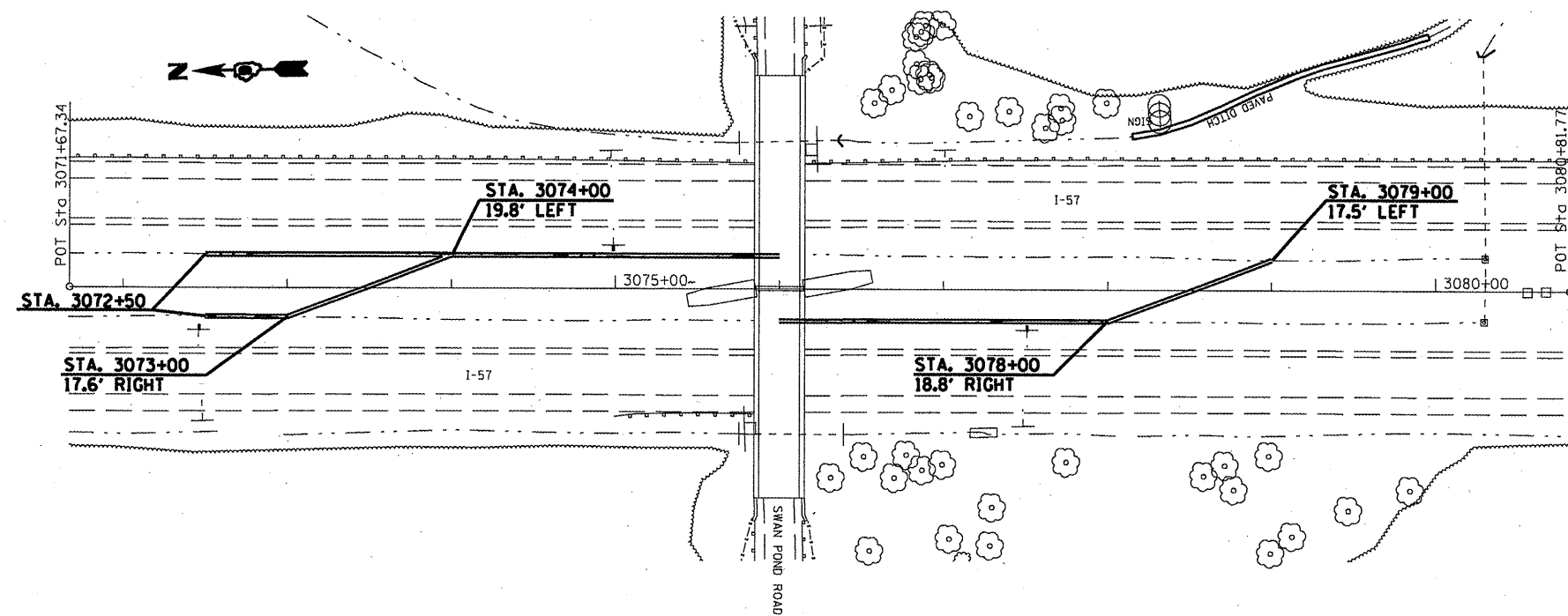
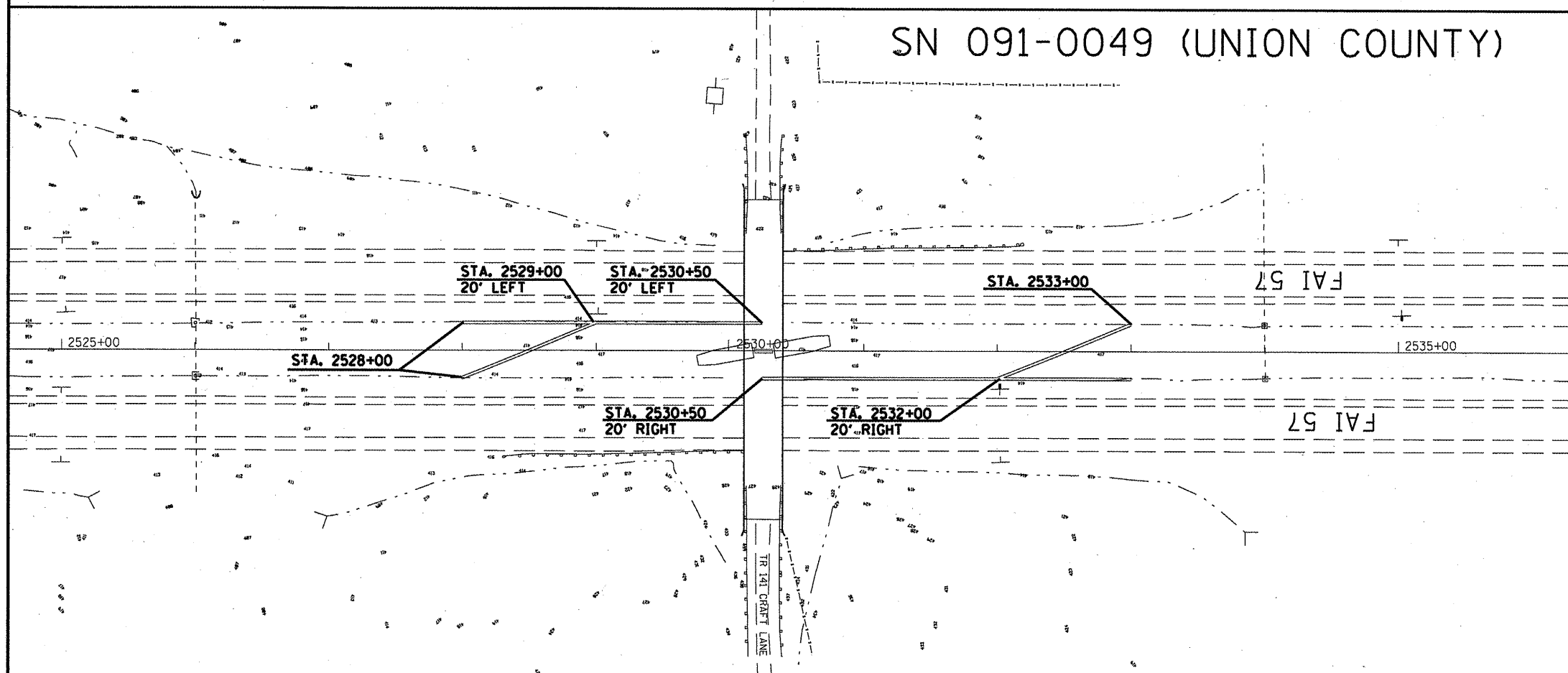


# SN 091-0046 (UNION COUNTY)



STATION	EXISTING FLOWLINE		PROPOSED FLOWLINE	
	LEFT DITCH	RIGHT DITCH	LEFT DITCH	RIGHT DITCH
3072+50	444.47	444.66	444.47	444.66
3072+75	444.59	444.44	444.58	444.74
3073+00	444.70	444.32	444.69	444.82
3073+25	444.68	444.37	444.80	444.90
3073+50	444.65	444.42	444.91	444.98
3073+75	444.53	444.51	445.02	445.06
3074+00	444.41	444.60	445.13	445.13
3074+25	444.44	444.74	445.24	NA
3074+50	444.46	444.88	445.36	NA
3074+75	444.53	444.88	445.47	NA
3075+00	444.64	444.88	445.58	NA
3075+25	444.51	444.98	445.69	NA
3075+50	444.44	445.08	445.80	NA
3075+75	444.45	445.04	445.91	NA
3076+00	444.45	445.00	446.02	446.08
3076+25	444.21	444.69	NA	445.75
3076+50	443.98	444.37	NA	445.41
3076+75	443.75	444.07	NA	445.08
3077+00	443.54	443.79	NA	444.75
3077+25	443.49	443.68	NA	444.41
3077+50	443.45	443.57	NA	444.08
3077+75	443.45	443.50	NA	443.74
3078+00	443.45	443.41	443.41	443.41
3078+25	443.19	443.14	443.22	443.14
3078+50	442.94	443.86	443.04	443.86
3078+75	442.8	443.57	442.85	443.57
3079+00	442.66	443.28	442.66	443.28

# SN 091-0049 (UNION COUNTY)



STATION	EXISTING FLOWLINE		PROPOSED FLOWLINE	
	LEFT DITCH	RIGHT DITCH	LEFT DITCH	RIGHT DITCH
2528+00	413.41	413.15	413.41	413.15
2528+25	413.44	413.09	413.56	413.37
2528+50	413.46	413.23	413.71	413.58
2528+75	413.49	413.37	413.86	413.80
2529+00	413.52	413.41	414.01	414.01
2529+25	413.56	413.43	414.17	NA
2529+50	413.36	413.79	414.32	NA
2529+75	413.14	414.16	414.47	NA
2530+00	413.41	414.20	414.62	NA
2530+25	413.69	414.23	414.77	415.83
2530+50	413.60	414.32	NA	414.36
2530+75	413.54	414.39	NA	414.26
2531+00	413.67	414.25	NA	414.15
2531+25	413.78	414.10	NA	414.05
2531+50	413.55	413.98	NA	413.94
2531+75	413.33	413.85	NA	413.84
2532+00	413.16	413.65	413.74	413.74
2532+25	412.99	413.46	413.49	413.63
2532+50	412.94	413.40	413.24	413.53
2532+75	412.89	413.42	413.00	413.42
2533+00	412.75	413.32	412.75	413.32