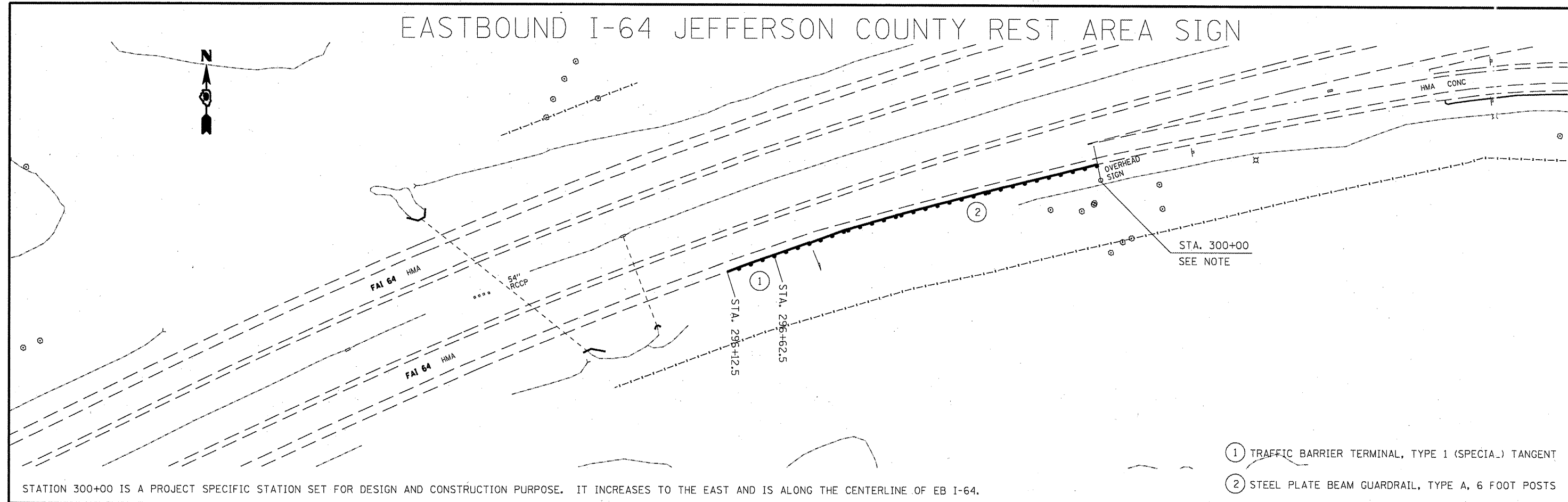


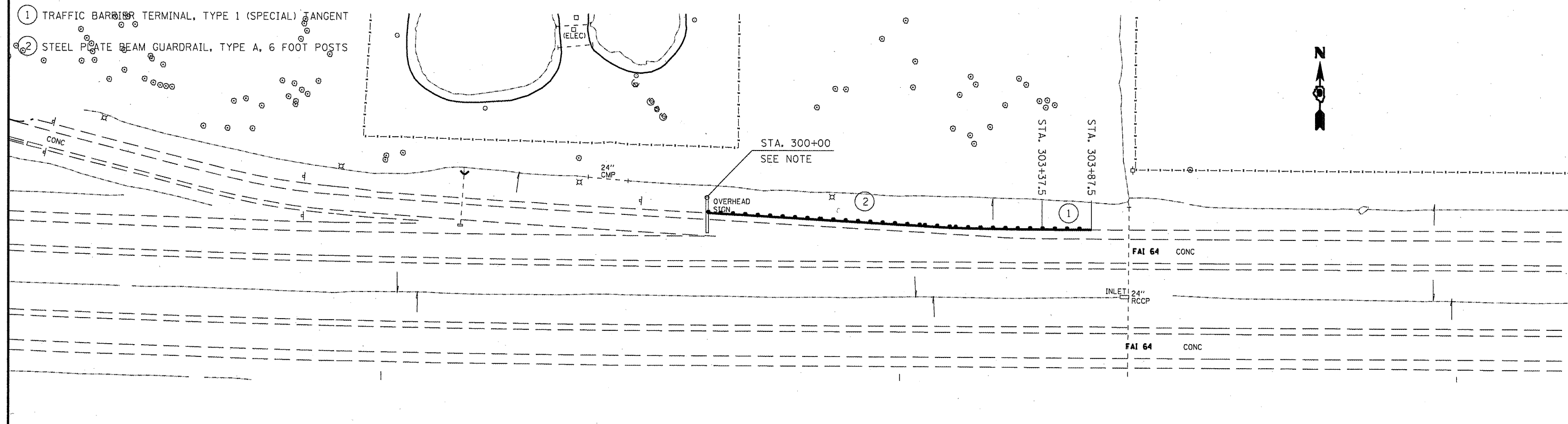
EASTBOUND I-64 JEFFERSON COUNTY REST AREA SIGN



STATION 300+00 IS A PROJECT SPECIFIC STATION SET FOR DESIGN AND CONSTRUCTION PURPOSE. IT INCREASES TO THE EAST AND IS ALONG THE CENTERLINE OF EB I-64.

- ① TRAFFIC BARRIER TERMINAL, TYPE 1 (SPECIAL) TANGENT
- ② STEEL PLATE BEAM GUARDRAIL, TYPE A, 6 FOOT POSTS

WESTBOUND I-64 JEFFERSON COUNTY REST AREA SIGN



- ① TRAFFIC BARRIER TERMINAL, TYPE 1 (SPECIAL) TANGENT
- ② STEEL PLATE BEAM GUARDRAIL, TYPE A, 6 FOOT POSTS

STATION 300+00 IS A PROJECT SPECIFIC STATION SET FOR DESIGN AND CONSTRUCTION PURPOSE. IT INCREASES TO THE NORTH AND IS ALONG THE CENTERLINE OF NB I-57.

FILE NAME =	USER NAME = shepardgd	DESIGNED -	REVISED -	STATE OF ILLINOIS DEPARTMENT OF TRANSPORTATION	GUARDRAIL PLAN SHEET	F.A. RTE.	SECTION	COUNT	TOTAL SHEETS	SHEET NO.	
ca:\pwork\pwork\shepardgd\08239675\78228-sh-t-m.scdgn	PLOT SCALE = 1/8" = 1' / IN.	DRAWN -	REVISED -			VAR	D9 SAFETY 2011-1	VARIOUS	165	36	
	PLOT DATE = 3/7/2011	CHECKED -	REVISED -			CONTRACT NO. 78228					
		DATE -	REVISED -			ILLINOIS FED. AID PROJECT					