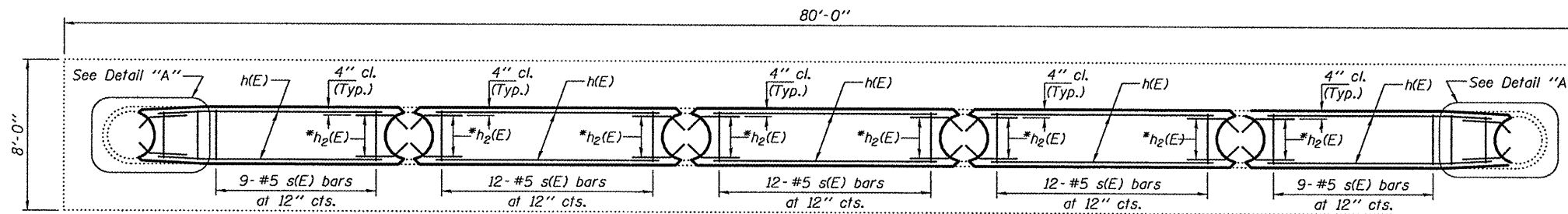


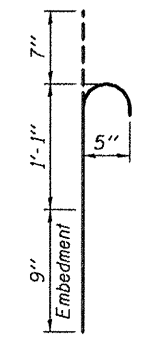
SECTION B-B

* Epoxy grout $h_1(E)$, $h_2(E)$ & $n(E)$ bars in 9" min. holes according to Article 584 of the Standard Specifications.

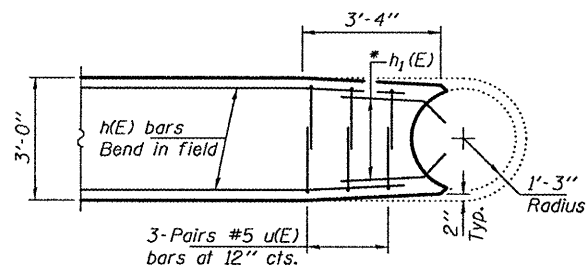
ELEVATION



SECTION A-A



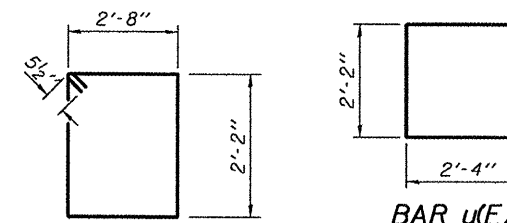
BAF n(E)



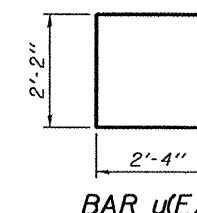
DETAIL "A"

NOTES

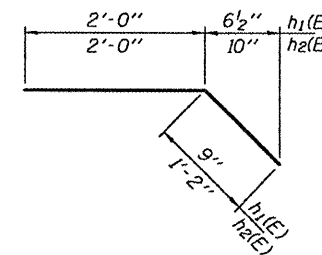
The cost of epoxy grouting threaded rods shall be included with Reinforcement Bars, Epoxy Coated.
 Plan dimensions and details relative to existing plans are subject to nominal construction variations. The Contractor shall field verify existing dimensions and details affecting new construction and make necessary approved adjustments prior to construction or ordering of materials. Such variations shall not be cause for additional compensation for a change in scope of the work, however, the Contractor will be paid for the quantity actually furnished at the unit price bid for the work.
 Reinforcement bars shall conform to the requirements of ASTM A 706 Gr 60. See Special Provisions.
 Reinforcement bars designated (E) shall be epoxy coated.



BAR s(E)



BAR u(E)



BARS $h_1(E)$ & $h_2(E)$

BILL OF MATERIAL

| Bar | No. | Size | Length | Shape | |
|----------------------------------|-----|------|--------|---------|------|
| $h(E)$ | 35 | #5 | 11'-9" | — | |
| $h_1(E)$ | 12 | #5 | 2'-9" | — | |
| $h_2(E)$ | 48 | #5 | 3'-2" | — | |
| $n(E)$ | 80 | #5 | 2'-5" | — | |
| $s(E)$ | 54 | #5 | 10'-7" | □ | |
| $u(E)$ | 12 | #5 | 6'-10" | □ | |
| Concrete Structures | | | | Cu. Yd. | 18.0 |
| Reinforcement Bars, Epoxy Coated | | | | Pounds | 1510 |

PRE-FINAL
 DATE: 2/10/2011

Expires: November 30, 2012

| | | |
|-------------------------|---|--------------------------|
| DESIGNED - ADY | EXAMINED | DATE - FEBRUARY 10, 2011 |
| CHECKED - VHV | ACTING ENGINEER OF STRUCTURAL SERVICES | |
| DRAWN - Kyle M. Steffen | PASSED | |
| CHECKED - ADY VHV | ACTING ENGINEER OF BRIDGES AND STRUCTURES | |

STATE OF ILLINOIS
DEPARTMENT OF TRANSPORTATION

PIER IMPROVEMENT DETAILS
SN 064-0029

SHEET NO. 1 OF 1 SHEETS

| | | | | |
|---------------------------|---------|--------|--------------|-----------|
| F.A.I. RTE. | SECTION | COUNTY | TOTAL SHEETS | SHEET NO. |
| 24 | - | MASAC | - | 41 |
| CONTRACT NO. | | | | |
| ILLINOIS FED. AID PROJECT | | | | |