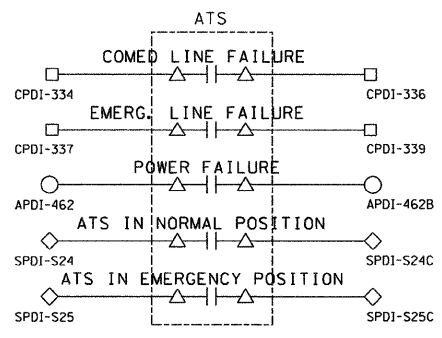
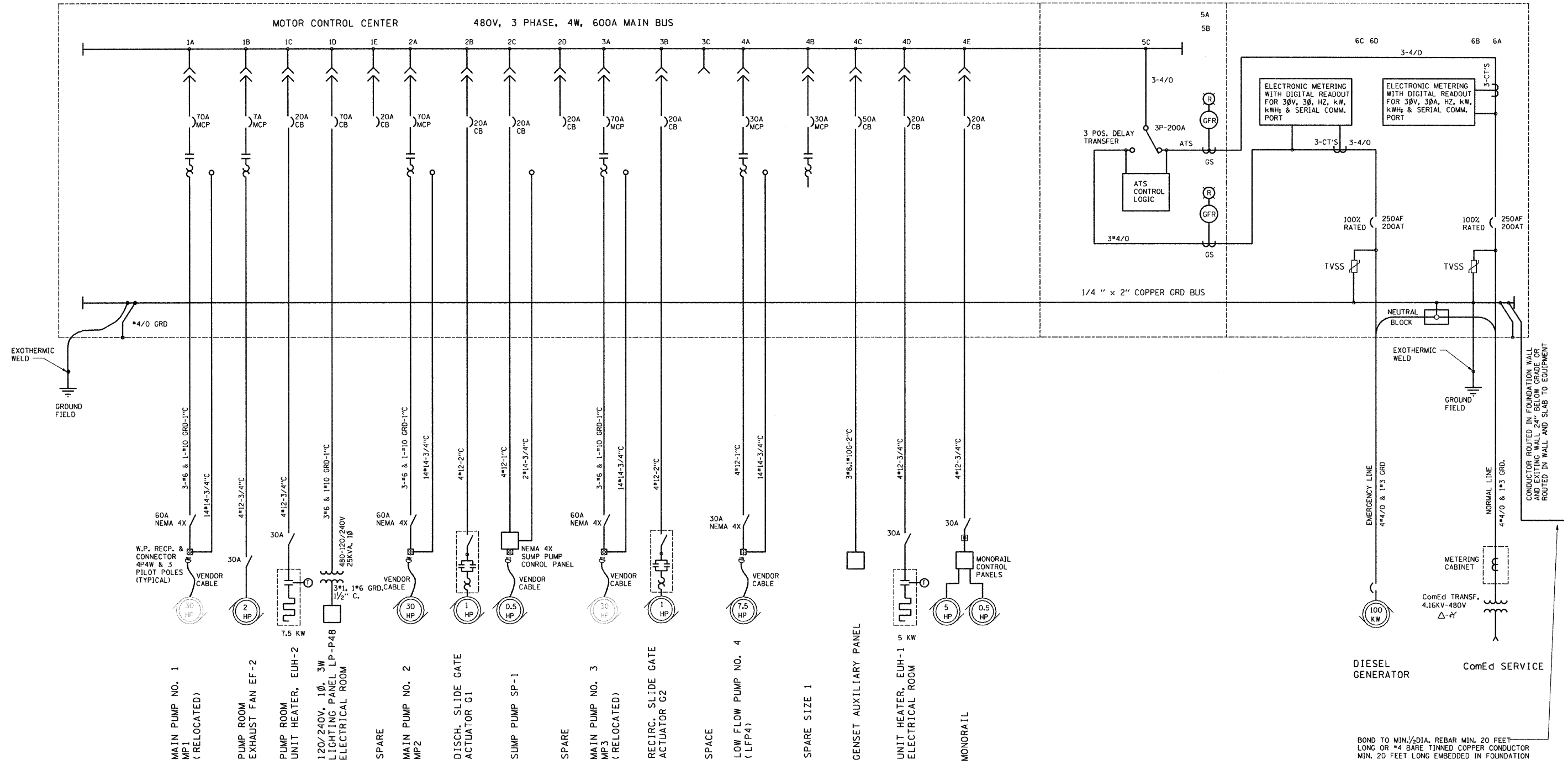


F.A.P. RTE.	SECTION	COUNTY	TOTAL SHEETS	SHEET NO.
365	59(SA, SB&SF)1	DUPAGE	39	22
FED. ROAD DIST. NO.		ILLINOIS	FED. AID PROJECT	

MCC-PS48 ONE LINE DIAGRAM



BOND TO MIN. 1/2" DIA. REBAR MIN. 20 FEET LONG OR #4 BARE TINNED COPPER CONDUCTOR MIN. 20 FEET LONG EMBEDDED IN FOUNDATION



E4

REVISIONS	
NAME	DATE

ILLINOIS DEPARTMENT OF TRANSPORTATION  
**PUMP STATION NO. 48  
 REHABILITATION**  
**MCC - ONE LINE DIAGRAM**  
 SCALE: N/A  
 DATE: 03-10-11  
 DRAWN BY: HFF  
 CHECKED BY: MS