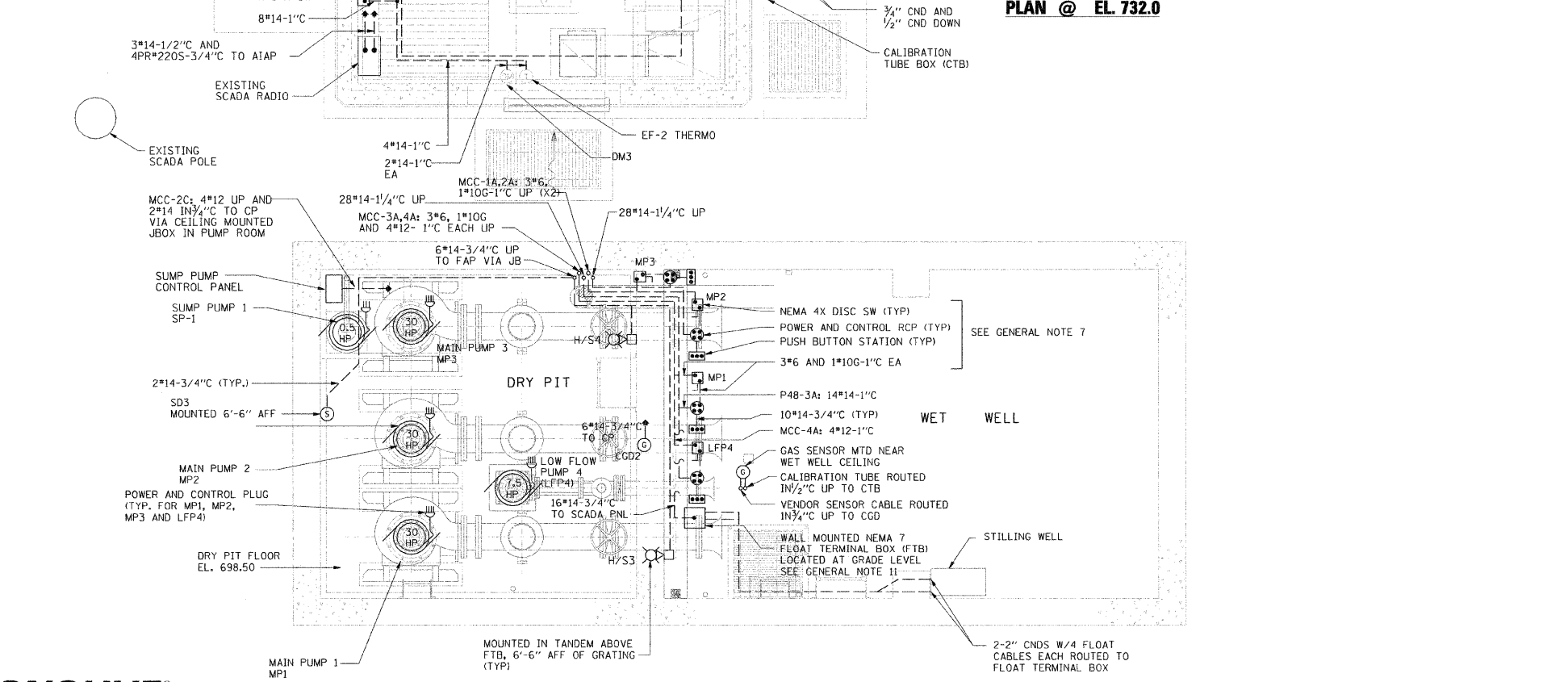


PLAN @ EL. 732.0

- GENERAL NOTES:
1. ALL CONTROL CABLES SHALL BE AWG NO. 14, STRANDED.
 2. ALL CONDUIT AND PIPE PENETRATIONS, THROUGH WALL AND/OR FLOOR SLAB, BETWEEN ROOMS SHALL BE GROUTED GAS TIGHT.
 3. ALL FLOOR & WALL PENETRATIONS SHALL BE CORE DRILLED & SEALED WITH NON-SHRINK GROUT UNLESS OTHERWISE NOTED.
 4. "2C/"18SH" REPRESENTS "2 CONDUCTOR #18 SHIELDED CABLE".
 5. CONTRACTOR IS RESPONSIBLE FOR COORDINATING CONDUIT LOCATIONS WITH OTHER DISCIPLINES.
 6. CONTRACTOR IS RESPONSIBLE FOR VERIFYING CONDUIT AND CONDUCTOR SIZES AND QUANTITY PRIOR TO INSTALLATION.
 7. EQUIPMENT FOR DRY WELL PUMPS SHALL BE MOUNTED ABOVE GRATING FLOOR IN THE DRY PIT. EQUIPMENT INCLUDES DISCONNECT SWITCHES, PUSHBUTTON STATIONS, POWER AND CONTROL RECEPTACLES, AND CGD2 AS WELL AS EQUIPMENT NOTED ON DRAWING.
 8. CEILING MOUNTED PULL BOX FOR CONDUITS PASSING BETWEEN PUMP ROOM AND ELECTRICAL ROOM. PULL BOX SHALL BE NEMA 4X AND INCLUDE ACCESSORIES AS SPECIFIED IN SECTION 16B.
 9. CONTRACTOR SHALL COORDINATE TEMPERATURE CONTROL PANEL, TIME CLOCK, AND CONTACTOR MOUNTING HEIGHTS WITH EF-1 WALL GRILLE.
 10. SEE DRAWING E19 FOR DETAILS.
 11. PROVIDE CONDUIT THRU SLAB TO TERMINAL BOX. PROVIDE TERMINAL STRIPS IN BOX TO ACT AS INTERFACE POINT BETWEEN VENDOR CABLE AND CONTROL WIRING. SEAL-OFFS SHALL BE ON CONTROL WIRING; SEAL-OFFS INSTALLED ON VENDOR CABLE IS NOT ALLOWED.
 12. SEE CGD1 AND DETAILS FOR GAS DETECTOR MOUNTING AND CONNECTIONS.
 13. THE WET WELL AND DISCHARGE CHAMBER ARE A CLASS 1, DIVISION 1 GROUP D HAZARDOUS LOCATION.



PLAN @ EL. 703.50

E9

ILLINOIS DEPARTMENT OF TRANSPORTATION
**PUMP STATION NO. 48
 REHABILITATION**
POWER PLANS

SCALE: AS SHOWN
 DATE: 03-10-11

DRAWN BY: HFF
 CHECKED BY: MS

REVISIONS	
NAME	DATE

