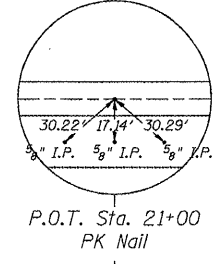
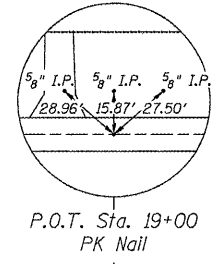
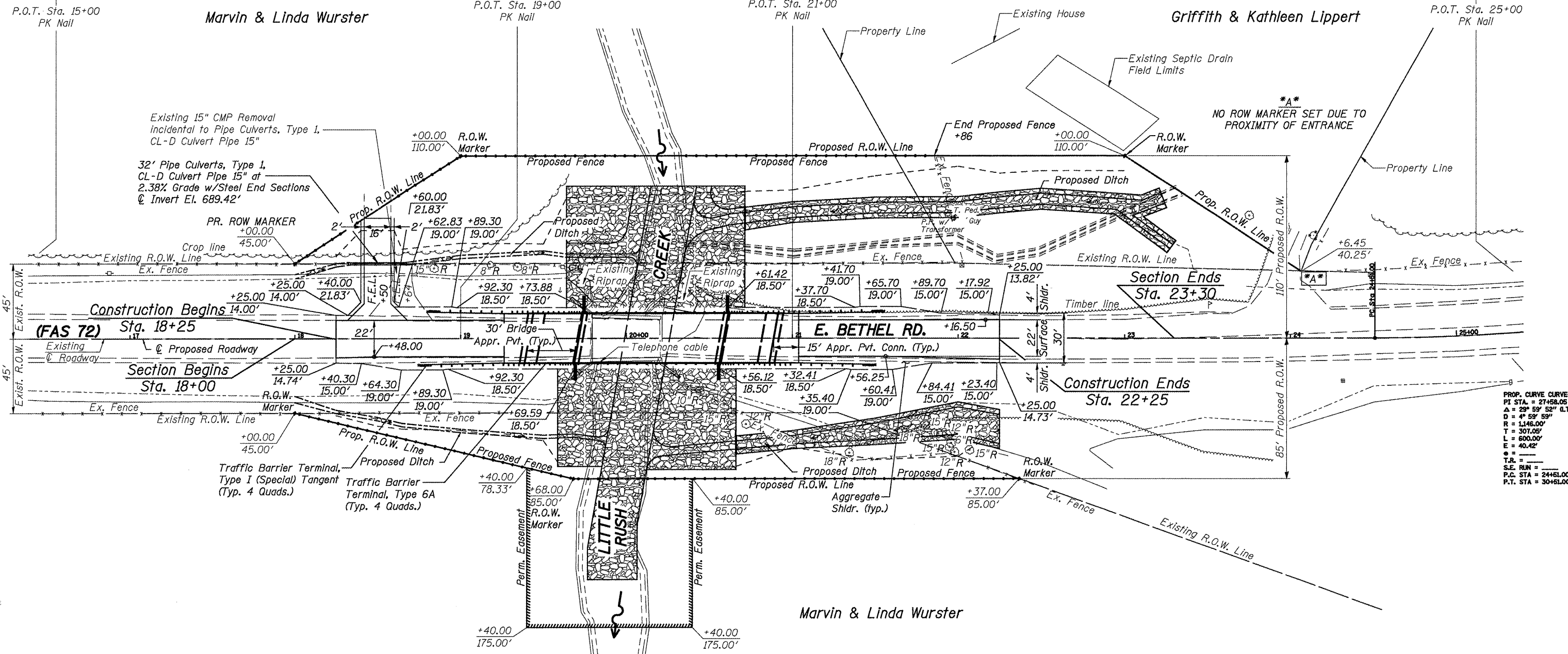
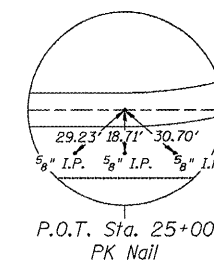


**Benchmark:** Railroad spike in 3rd power pole  
W. of exist. bridge. ±36.6' Lt. of  
Sta. 14+10, Elev. 697.59



**Benchmark:** Railroad spike in 2nd power pole  
W. of exist. bridge. ±38.4' Lt. of  
Sta. 16+88, Elev. 695.31

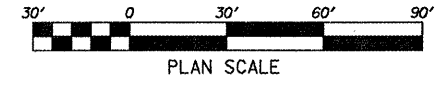


PROP. CURVE CURVE-1  
PT STA. = 27+58.05  
Δ = 29° 59' 52" (LT)  
D = 4° 59' 59"  
R = 1146.00'  
T = 307.05'  
L = 600.00'  
E = 40.42'  
P.C. STA = 24+61.00  
P.T. STA = 30+61.00



**Existing Structure:** S.N. 043-3009  
A single span (1 @ 42'-0") concrete T-beam bridge  
on closed abutments @ Sta. 20+00. No Skew

**Proposed Structure:** S.N. 043-3277  
A single span (1 @ 85'-0") precast prestressed  
concrete I-beam structure on spill-thru abutments  
at Sta. 20+15, Skewed 10° Lt. ahead.



REV.	DATE	BY	REMARKS

**JO DAVIESS COUNTY  
BRIDGE REPLACEMENT  
EAST BETHEL ROAD OVER LITTLE RUSH CREEK  
2011**



**EAST BETHEL ROAD  
PROPOSED PLAN VIEW  
STA. 18+00.00 - STA. 23+30.00**

SECTION	COUNTY	TOTAL SHEETS	SHEET NO.
10-00134-00-BR	JO DAVIESS	34	6
STA. 18+00.00 - STA. 23+30.00			
WHA PROJECT: 1183D10		DATE: 1/2011	

FILE = S:\PROJECTS\1183D10\_10\Drawings\County\_Bethel\_Road\DESIGN\1183ppBETHEL1.DGN