

**LEFT EDGE OF APPROACH PAVEMENT**

Location	Station	Offset Lt.	Theoretical Grade Elevations
A	20+61.42	15.00'	702.96
B	20+71.42	15.00'	703.31
C	20+81.42	15.00'	703.67
D	20+91.42	15.00'	704.04

**LEFT EDGE OF TRAFFIC LANE**

Location	Station	Offset Lt.	Theoretical Grade Elevations
A	20+60.89	12.00'	703.00
B	20+70.89	12.00'	703.35
C	20+80.89	12.00'	703.71
D	20+90.89	12.00'	704.08

**CENTERLINE**

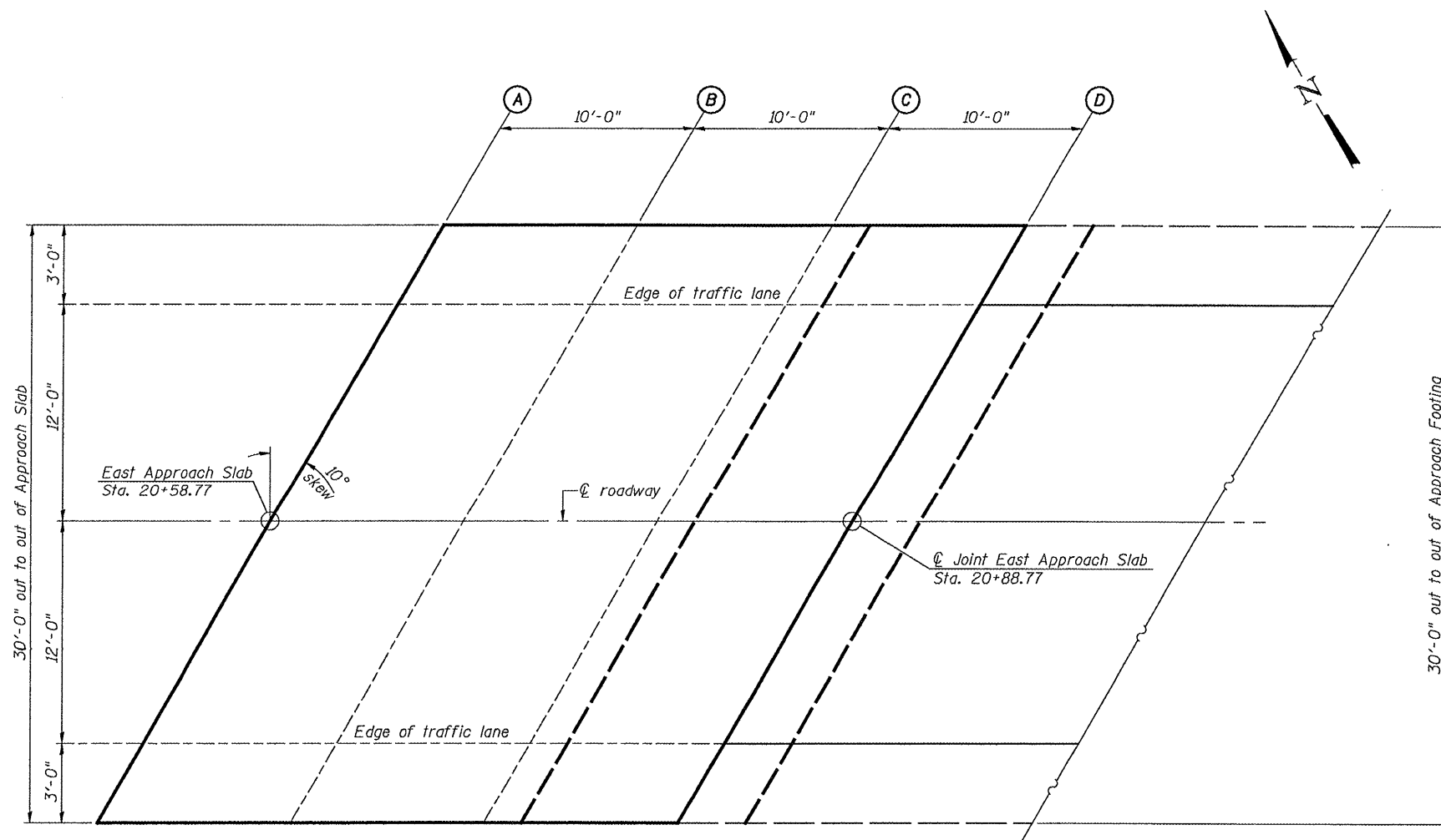
Location	Station	Offset	Theoretical Grade Elevations
A	20+58.77	0.00'	703.12
B	20+68.77	0.00'	703.46
C	20+78.77	0.00'	703.82
D	20+88.77	0.00'	704.19

**RIGHT EDGE OF TRAFFIC LANE**

Location	Station	Offset Rt.	Theoretical Grade Elevations
A	20+56.65	12.00'	702.86
B	20+66.65	12.00'	703.20
C	20+76.65	12.00'	703.55
D	20+86.65	12.00'	703.92

**RIGHT EDGE OF APPROACH PAVEMENT**

Location	Station	Offset Rt.	Theoretical Grade Elevations
A	20+56.13	15.00'	702.78
B	20+66.13	15.00'	703.12
C	20+76.13	15.00'	703.48
D	20+86.13	15.00'	703.84



**PLAN**

FILE NAME = S:\PROJECTS\2010\1183D10 - Jodaviness County Bethel Road\DESIGN\STRUCT\Drawings\1183D10\EastAppr-SlabElev.dgn

USER NAME =	DESIGNED - M. C. WAGNER	REVISED -
PLOT SCALE =	CHECKED - B. K. CONVERSE	REVISED -
PLOT DATE =	DRAWN - F. D. LACHAT	REVISED -
	CHECKED - M. A. CACKLEY	REVISED -

**JODAVIESS COUNTY**  
**F.A.S. 72 (E. BETHEL RD.) OVER LITTLE RUSH CREEK**  
**STATION 20 + 15**

**TOP OF EAST BRIDGE APPROACH SLAB ELEVATIONS**  
**STRUCTURE NO. 043-3277**

STRUCTURAL SHEET NO. 5 OF 17 SHEETS

F.A.S. RTE.	SECTION	COUNTY	TOTAL SHEETS	SHEET NO.
72	10-00134-00-BR	JODAVIESS	34	15
WHA* 1183D10		CONTRACT NO. 85536		
ILLINOIS FED. AID PROJECT ER-0072(103)				