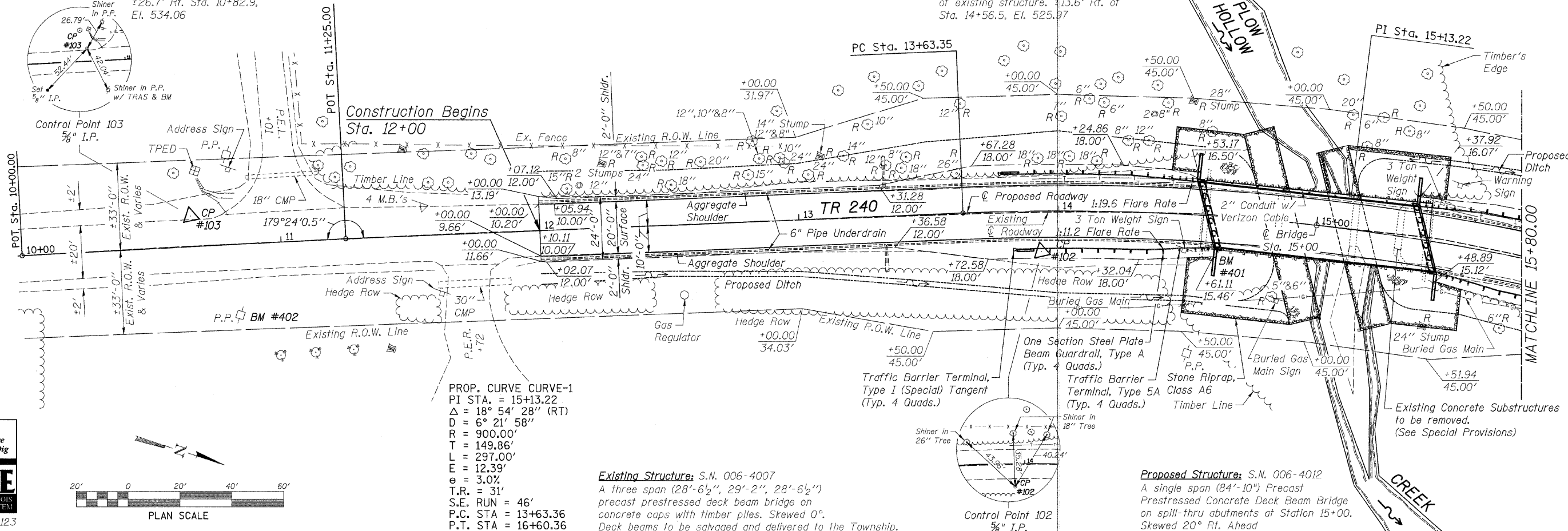


Bench Mark #402: RR spike in PP w/transformer.
 ±26.7' Rt. Sta. 10+82.9,
 El. 534.06

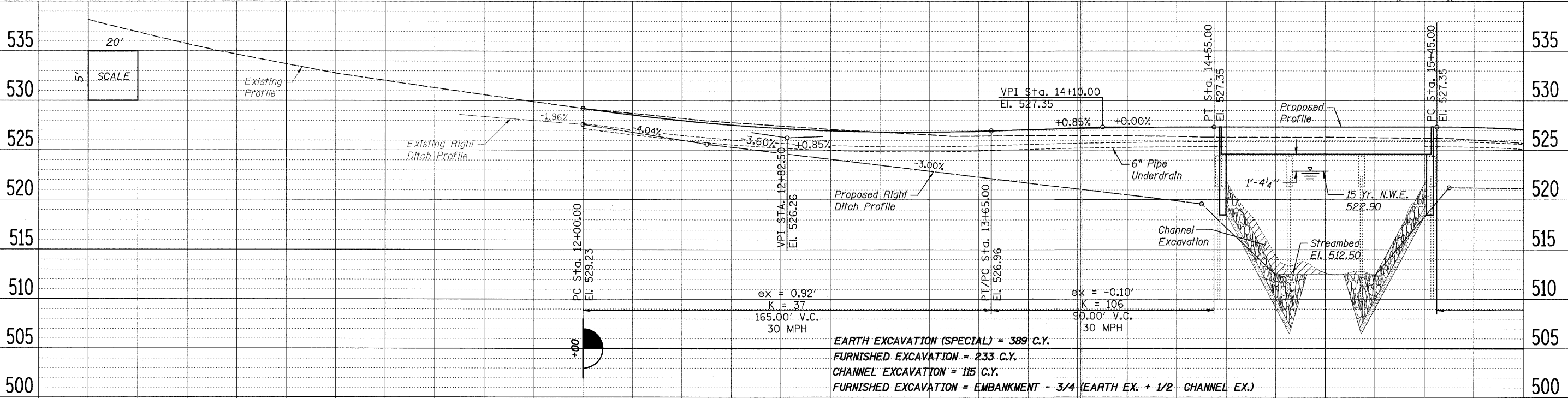
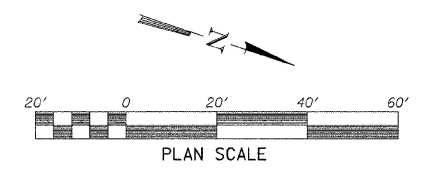
Bench Mark #401: Chiseled "C" on southeast wingwall
 of existing structure. ±13.6' Rt. of
 Sta. 14+56.5, El. 525.97



PROP. CURVE CURVE-1
 PI STA. = 15+13.22
 $\Delta = 18^\circ 54' 28''$ (RT)
 $D = 6^\circ 21' 58''$
 $R = 900.00'$
 $L = 149.86'$
 $T = 297.00'$
 $E = 12.39'$
 $e = 3.0\%$
 $T.R. = 31'$
 $S.E. RUN = 46'$
 $P.C. STA = 13+63.36$
 $P.T. STA = 16+60.36$

Existing Structure: S.N. 006-4007
 A three span (28'-6 1/2", 29'-2", 28'-6 1/2")
 precast prestressed deck beam bridge on
 concrete caps with timber piles. Skewed 0°.
 Deck beams to be salvaged and delivered to the Township.

Proposed Structure: S.N. 006-4012
 A single span (84'-10") Precast
 Prestressed Concrete Deck Beam Bridge
 on spill-thru abutments at Station 15+00.
 Skewed 20° Rt. Ahead



EARTH EXCAVATION (SPECIAL) = 389 C.Y.
 FURNISHED EXCAVATION = 233 C.Y.
 CHANNEL EXCAVATION = 115 C.Y.
 FURNISHED EXCAVATION = EMBANKMENT - 3/4 (EARTH EX. + 1/2 CHANNEL EX.)

538.18	536.63	535.17	533.97	532.78	531.87	530.97	530.08	529.23	529.23	528.60	528.41	527.98	527.77	527.55	527.29	527.12	526.98	526.76	526.84	526.41	526.87	526.48	527.05	526.49	527.21	526.45	527.31	526.34	527.35	526.31	527.35	526.25	527.35	526.18	527.34	525.81	527.17
10+00	10+50	11+00	11+50	12+00	12+50	13+00	13+50	14+00	14+50	15+00	15+50																										

USER NAME =	DESIGNED - B.S.K.	REVISED -
PLOT SCALE =	CHECKED - B.K.C.	REVISED -
PLOT DATE =	DRAWN - R.D.A.	REVISED -
	CHECKED - B.S.K.	REVISED -

BUREAU COUNTY
TR 240 OVER PLOW HOLLOW CREEK
STATION 15 + 00

PLAN AND PROFILE
STRUCTURE NO. 006-4012
 STA. 10+00 TO STA. 15+80

TWP. RTE. 240	SECTION 10-01121-00-BR	COUNTY BUREAU	TOTAL SHEETS 23	SHEET NO. 6
WHA# 1285010		CONTRACT NO. 87483		
ILLINOIS FED. AID PROJECT BROS-0011(075)				

FILE NAME = S:\PROJECTS\2010\1285010\BureauCo_Tri240\DESIGN\STRUCT\pp\TR240.dgn