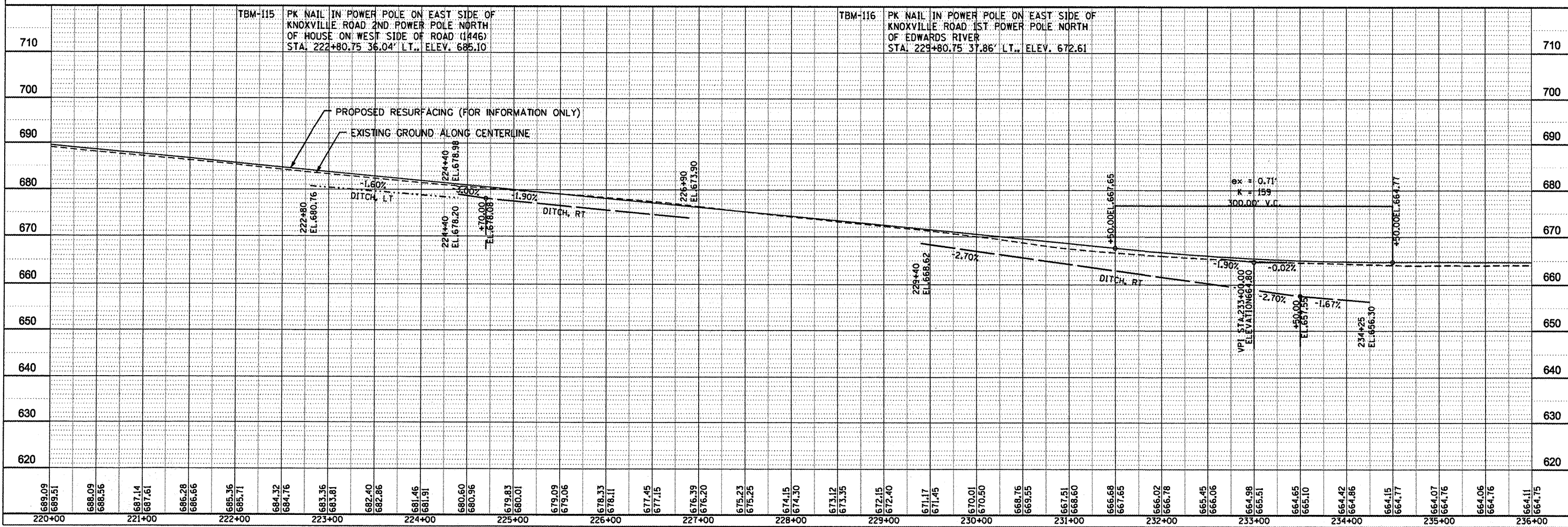
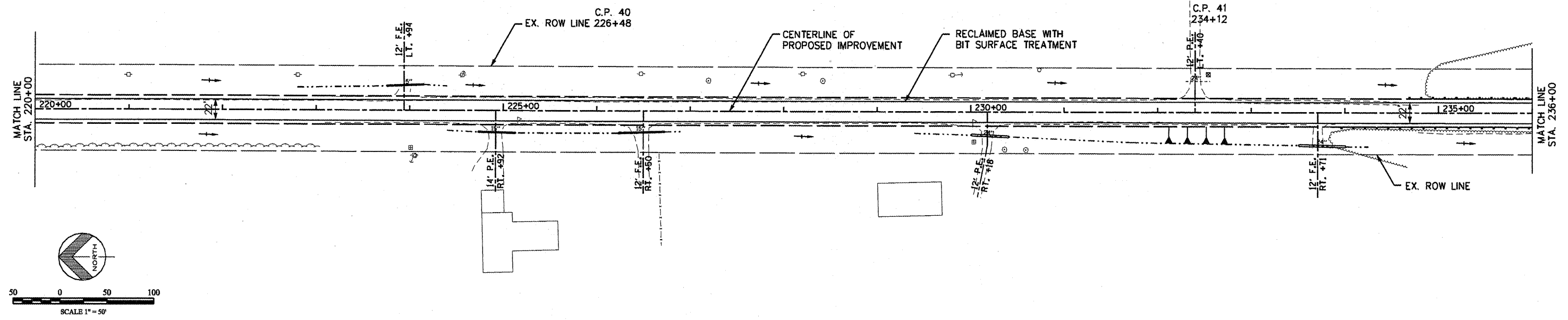
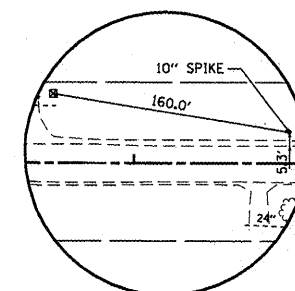
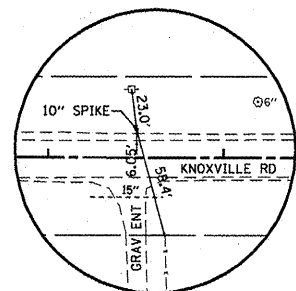


F.A.S. RTE.	SECTION	COUNTY	TOTAL SHEETS	SHEET NO.
206	05-00094-03-GR	MERCER COUNTY	11	9
STA. 220+00 TO STA. 136+00				
FED. ROAD DIST. NO. 7 ILLINOIS				



TBM-115 PK NAIL IN POWER POLE ON EAST SIDE OF KNOXVILLE ROAD 2ND POWER POLE NORTH OF HOUSE ON WEST SIDE OF ROAD (1446) STA. 222+80.75 36.04' LT., ELEV. 685.10

TBM-116 PK NAIL IN POWER POLE ON EAST SIDE OF KNOXVILLE ROAD 1ST POWER POLE NORTH OF EDWARDS RIVER STA. 229+80.75 37.86' LT., ELEV. 672.61